

**In accordance with the requirements of FCC Report and Order:  
FCC 47 CFR Part 2 ( 2.1093) ;IEEE1528 :2013**

## **FCC SAR TEST REPORT**

**For**

**Product Name: Gnss data collector**

**Brand Name: N/A**

**Model No.: K2 series**

**Series Model: N/A**

**Test Report Number: C151201S04-SF**

**Issued for**

**Wuhan Geosun Navigation Technology Co.,Ltd.  
12/F, Jucheng Bldg., Wuhan Univ. Science and Technology Park, Univ. Rd., Wuhan City,  
Hubei Province, China**

**Issued by**

**Compliance Certification Services Inc.**

**Kun Shan Laboratory**

**No.10 Weiye Rd., Innovation park, Eco&Tec,  
Development Zone, Kunshan City, Jiangsu, China**

**TEL: 86-512-57355888**

**FAX: 86-512-57370818**



**Note:** This report shall not be reproduced except in full, without the written approval of Compliance Certification Services Inc. This document may be altered or revised by Compliance Certification Services Inc. personnel only, and shall be noted in the revision section of the document. The client should not use it to claim product endorsement by A2LA or any government agencies. The test results in the report only apply to the tested sample.



## Revision History

Revision	REPORT NO.	Date	Page Revised	Contents
Original	C151201S04-SF	December 29, 2015	N/A	N/A

**TABLE OF CONTENTS**

<b>1. CERTIFICATE OF COMPLIANCE (SAR EVALUATION)</b>	<b>4</b>
<b>2. EUT DESCRIPTION</b>	<b>5</b>
<b>3. REQUIREMENTS FOR COMPLIANCE TESTING DEFINED BY THE FCC</b>	<b>6</b>
<b>4. TEST METHODOLOGY</b>	<b>6</b>
<b>5. TEST CONFIGURATION</b>	<b>6</b>
<b>6. DOSIMETRIC ASSESSMENT SETUP</b>	<b>7</b>
6.1 MEASUREMENT SYSTEM DIAGRAM	8
6.2 SYSTEM COMPONENTS	9
<b>7. EVALUATION PROCEDURES</b>	<b>12</b>
<b>8. MEASUREMENT UNCERTAINTY</b>	<b>16</b>
<b>9. EXPOSURE LIMIT</b>	<b>17</b>
<b>10. EUT ARRANGEMENT</b>	<b>18</b>
10.1 BODY WORN TEST	18
<b>11. MEASUREMENT RESULTS</b>	<b>19</b>
11.1 TEST LIQUIDS CONFIRMATION	19
11.2 LIQUID MEASUREMENT RESULTS	20
11.3 SYSTEM PERFORMANCE CHECK	21
11.4 EUT TUNE-UP PROCEDURES AND TEST MODE	23
11.5 SAR TEST CONFIGURATIONS	26
11.6 EUT SETUP PHOTOS	27
11.7 SAR MEASUREMENT RESULTS	28
11.8 REPEATED SAR MEASUREMENT	29
<b>12. SAR HANDSETS MULTI XMITER ASSESSMENT</b>	<b>30</b>
<b>13. EUT PHOTO</b>	<b>32</b>
<b>14. EQUIPMENT LIST &amp; CALIBRATION STATUS</b>	<b>36</b>
<b>15. FACILITIES</b>	<b>37</b>
<b>16. REFERENCES</b>	<b>37</b>
<b>17. ATTACHMENTS</b>	<b>38</b>
<b>Appendix A: Plots of Performance Check</b>	<b>39</b>
<b>Appendix B: DASY Calibration Certificate</b>	<b>42</b>
<b>Appendix C: Plots of SAR Test Result</b>	<b>42</b>

**1. CERTIFICATE OF COMPLIANCE (SAR EVALUATION)**

<b>Product Name:</b>	Gnss data collector
<b>Brand Name:</b>	N/A
<b>Model Name.:</b>	K2 series
<b>Series Model:</b>	N/A
<b>Devices supporting GPRS:</b>	Class B
<b>Device Category:</b>	PORTABLE DEVICES
<b>Exposure Category:</b>	GENERAL POPULATION/UNCONTROLLED EXPOSURE
<b>Date of Test:</b>	December 25, 2015
<b>Applicant:</b>	<b>Wuhan Geosun Navigation Technology Co.,Ltd.</b> 12/F, Jucheng Bldg., Wuhan Univ. Science and Technology Park, Univ. Rd., Wuhan City, Hubei Province, China
<b>Manufacturer:</b>	<b>Wuhan Geosun Navigation Technology Co.,Ltd.</b> 12/F, Jucheng Bldg., Wuhan Univ. Science and Technology Park, Univ. Rd., Wuhan City, Hubei Province, China
<b>Application Type:</b>	Certification


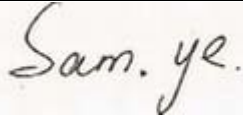
**APPLICABLE STANDARDS AND TEST PROCEDURES**

<b>STANDARDS AND TEST PROCEDURES</b>	<b>TEST RESULT</b>
FCC 47 CFR Part 2 ( 2.1093) & KDB 865664	Compliance

**Deviation from Applicable Standard**

None

The device was tested by Compliance Certification Services Inc. in accordance with the measurement methods and procedures specified in KDB 865664. The test results in this report apply only to the tested sample of the stated device/equipment. Other similar device/equipment will not necessarily produce the same results due to production tolerance and measurement uncertainties.

<b>Approved by:</b>	<b>Tested by:</b>
	
Jeff.fang RF Manager Compliance Certification Services Inc.	Sam.ye Test Engineer Compliance Certification Services Inc.

## 2. EUT DESCRIPTION

<b>Product Name:</b>	Gnss data collector
<b>Brand Name:</b>	N/A
<b>Model Name.:</b>	K2 series
<b>Series Model:</b>	N/A
<b>Model Discrepancy:</b>	N/A
<b>FCC ID:</b>	2AGY7-K2
<b>Power reduction:</b>	NO
<b>DTM Description:</b>	N/A
<b>Device Category:</b>	Production unit
<b>Frequency Range:</b>	GSM 850: 824.2 ~ 848.8 MHz GSM 1900: 1850.2 ~ 1909.8 MHz Bluetooth: 2402 ~ 2480 MHz
<b>Modulation Technique:</b>	GPRS: GMSK Bluetooth EDR: GFSK + $\pi/4$ DQPSK+8DPSK
<b>GPRS Level:</b>	10
<b>Accessories:</b>	Battery (rating) : Capacitance: 4200mAh 3.7v
<b>Antenna Specification:</b>	GSM: PIFA Antenna BT: PIFA Antenna
<b>Operating Mode:</b>	Maximum continuous output

### 2.1 STATEMENT OF COMPLIANCE

The maximum results of Specific Absorption Rate (SAR) found during testing for **Wuhan Geosun Navigation Technology Co.,Ltd., K2E** are as follows.

Equipment Class	Frequency Band	Highest SAR Summary	
		Body Worn (Separation 0mm)	
		1g SAR (W/kg)	
PCE	GSM850	0.051	Highest Simultaneous Transmission 1g SAR (W/kg) 0.254
	GSM1900	0.170	

### **3. REQUIREMENTS FOR COMPLIANCE TESTING DEFINED BY THE FCC**

The order requires routine SAR evaluation prior to equipment authorization of portable transmitter devices, including portable telephones. For consumer products, the applicable limit is 1.6 W/Kg for an uncontrolled environment and 8.0 W/Kg for an occupational/controlled environment as recommended by the FCC 47 CFR Part 2 ( 2.1093).

### **4. TEST METHODOLOGY**

The Specific Absorption Rate (SAR) testing specification, method and procedure for this device is in accordance with the following standards:

- ☒ FCC 47 CFR Part 2 ( 2.1093)
- ☒ IEEE 1528:2013
- ☒ KDB 447498 D01v06      General RF Exposure Guidance
- ☒ KDB 648474 D04v01r03      Handset SAR
- ☒ KDB 865664 D01v01r04      SAR Measurement 100 MHz to 6 GHz
- ☒ KDB 865664 D02v01r02      RF Exposure Reporting

### **5. TEST CONFIGURATION**

For WWAN SAR testing The device was controlled by using a base station emulator R&S CMU200. Communication between the device and the emulator was established by air link. The distance between the DUT and the antenna of the emulator is larger than 50 cm and the output power radiated from the emulator antenna is at least 30 dB smaller than the output power of DUT. The DUT was set from the emulator to radiate maximum output power during all tests.

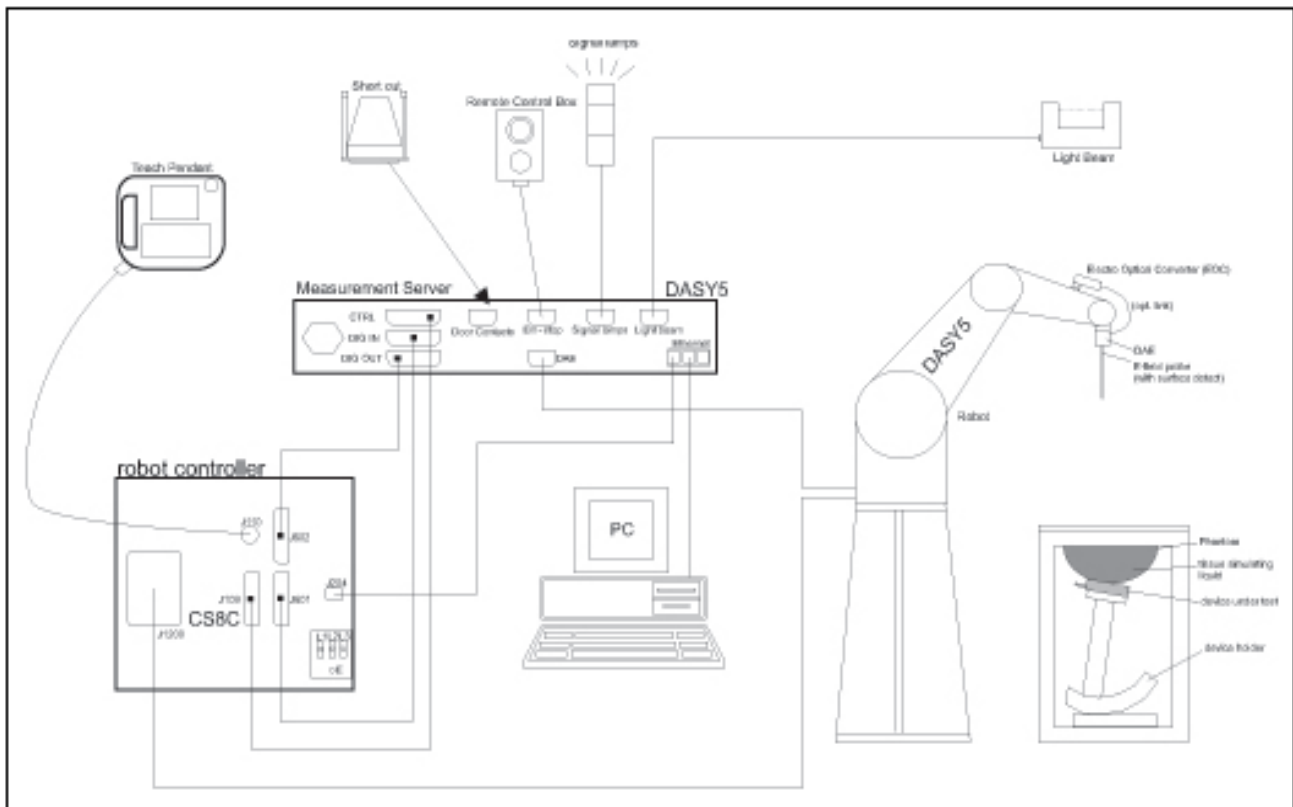
## 6. DOSIMETRIC ASSESSMENT SETUP

These measurements were performed with the automated near-field scanning system DASY5 from Schmid & Partner Engineering AG (SPEAG). The system is based on a high precision robot (working range greater than 0.9 m), which positions the probes with a positional repeatability of better than  $\pm 0.02$  mm. Special E- and H-field probes have been developed for measurements close to material discontinuity, the sensors of which are directly loaded with a Schottky diode and connected via highly resistive lines to the data acquisition unit. The SAR measurements were conducted with the E-field PROBE EX3DV4 (manufactured by SPEAG), designed in the classical triangular configuration and optimized for dosimetric evaluation. The probe has been calibrated according to the procedure described in [7] with accuracy of better than  $\pm 10\%$ . The spherical isotropy was evaluated with the procedure described in [8] and found to be better than  $\pm 0.25$  dB. The phantom used was the SAM Twin Phantom as described in FCC supplement C, IEE P1528 and CENELEC EN 62209.

The following table gives the recipes for tissue simulating liquids.

Ingredients (% by weight)	Frequency (MHz)									
	450		835		915		1900		2450	
Tissue Type	Head	Body	Head	Body	Head	Body	Head	Body	Head	Body
Water	38.56	51.16	41.45	52.4	41.05	56.0	54.9	40.4	62.7	73.2
Salt (NaCl)	3.95	1.49	1.45	1.4	1.35	0.76	0.18	0.5	0.5	0.04
Sugar	56.32	46.78	56.0	45.0	56.5	41.76	0.0	58.0	0.0	0.0
HEC	0.98	0.52	1.0	1.0	1.0	1.21	0.0	1.0	0.0	0.0
Bactericide	0.19	0.05	0.1	0.1	0.1	0.27	0.0	0.1	0.0	0.0
Triton X-100	0.0	0.0	0.0	0.0	0.0	0.0	0.0	0.0	36.8	0.0
DGBE	0.0	0.0	0.0	0.0	0.0	0.0	44.92	0.0	0.0	26.7
Dielectric Constant	43.42	58.0	42.54	56.1	42.0	56.8	39.9	54.0	39.8	52.5
Conductivity (S/m)	0.85	0.83	0.91	0.95	1.0	1.07	1.42	1.45	1.88	1.78

## 6.1 MEASUREMENT SYSTEM DIAGRAM



**The DASY5 system for performing compliance tests consists of the following items:**

- A standard high precision 6-axis robot (Stäubli RX family) with controller, teach pendant and software. An arm extension for accommodating the data acquisition electronics (DAE).
- A dosimetric probe, i.e., an isotropic E-field probe optimized and calibrated for usage in tissue simulating liquid. The probe is equipped with an optical surface detector system.
- A data acquisition electronics (DAE) which performs the signal amplification, signal multiplexing, AD-conversion, offset measurements, mechanical surface detection, collision detection, etc. The unit is battery powered with standard or rechargeable batteries. The signal is optically transmitted to the EOC.
- The Electro-optical converter (EOC) performs the conversion between optical and electrical of the signals for the digital communication to the DAE and for the analog signal from the optical surface detection. The EOC is connected to the measurement server.
- The function of the measurement server is to perform the time critical tasks such as signal filtering, control of the robot operation and fast movement interrupts.
- A probe alignment unit which improves the (absolute) accuracy of the probe positioning.
- A computer operating Windows 7.
- DASY5 software.
- Remote control with teach pendant and additional circuitry for robot safety such as warning lamps, etc.
- The SAM twin phantom enabling testing left-hand and right-hand usage.
- The device holder for handheld mobile phones.
- Tissue simulating liquid mixed according to the given recipes.
- Validation dipole kits allowing validating the proper functioning of the system.



## 6.2 SYSTEM COMPONENTS



The DASY5 measurement server is based on a PC/104 CPU board with a 400MHz intel ULV celeron, 128MB chip-disk and 128 MB RAM. The necessary circuits for communication with either the DAE4(or DAE3) electronic box as well as the 16-bit AD-converter system for optical detection and digital I/O interface are contained on the DASY5 I/O-board, which is directly connected to the PC/104 bus of the CPU board.

The measurement server performs all real-time data evaluation for field measurements and surface detection, controls robot movements and handles safety operation.



The PC-operating system cannot interfere with these time critical processes. All connections are supervised by a watchdog, and disconnection of any of the cables to the measurement server will automatically disarm the robot and disable all program-controlled robot movements. Furthermore, the measurement server is equipped with two expansion slots which are reserved for future applications. Please note that the expansion slots do not have a standardized pinout and therefore only the expansion cards provided by SPEAG can be inserted. Expansion cards from any other supplier could seriously damage the measurement server. Calibration: No calibration required.

### Data Acquisition Electronics (DAE)



The data acquisition electronics (DAE4) consists of a highly sensitive electrometer grade preamplifier with auto-zeroing, a channel and gain-switching multiplexer, a fast 16 bit AD converter and a command decoder and control logic unit. Transmission to the measurement server is accomplished through an optical downlink for data and status information as well as an optical uplink for commands and the clock. The mechanical probe mounting device includes two different sensor systems for frontal and sideways probe contacts. They are used for mechanical surface detection and probe collision detection. The input impedance of the DAE4 box is 200MOhm; the inputs are symmetrical and floating. Common mode rejection is above 80 dB.

### EX3DV4 Isotropic E-Field Probe for Dosimetric Measurements



**Construction:** Symmetrical design with triangular core

Built-in shielding against static charges

PEEK enclosure material (resistant to organic solvents, e.g., DGBE)

**Calibration:** Basic Broad Band Calibration in air: 10-3000 MHz.

Conversion Factors (CF) for HSL 900 and HSL 1800  
CF-Calibration for other liquids and frequencies upon request.

**Frequency:** 10 MHz to > 6 GHz; Linearity:  $\pm 0.2$  dB (30 MHz to 3 GHz)

**Directivity:**  $\pm 0.3$  dB in HSL (rotation around probe axis)  
 $\pm 0.5$  dB in HSL (rotation normal to probe axis)

**Dynamic Range:** 10  $\mu$ W/g to > 100 mW/g; Linearity:  $\pm 0.2$  dB  
(noise: typically < 1  $\mu$ W/g)

**Dimensions:** Overall length: 337 mm (Tip: 9 mm)  
Tip diameter: 2.5 mm (Body: 10 mm)  
Distance from probe tip to dipole centers:  
1 mm

**Application:** High precision dosimetric measurements in any exposure scenario (e.g., very strong gradient fields). Only probe which enables compliance testing for frequencies up to 6 GHz with precision of better 30%.



Interior of probe

## SAM Twin Phantom

### Construction:

The shell corresponds to the specifications of the Specific Anthropomorphic Mannequin (SAM) phantom defined in IEEE 1528-200X, CENELEC 50360 and IEC 62209. It enables the dosimetric evaluation of left and right hand phone usage as well as body mounted usage at the flat phantom region. A cover prevents evaporation of the liquid. Reference markings on the phantom allow the complete setup of all predefined phantom positions and measurement grids by manually teaching three points with the robot.

**Shell Thickness:**  $2 \pm 0.2$  mm

**Filling Volume:** Approx. 25 liters

**Dimensions:** Height: 850mm; Length: 1000mm; Width: 750mm



## SAM Phantom (ELI4 v4.0)

### Description Construction:

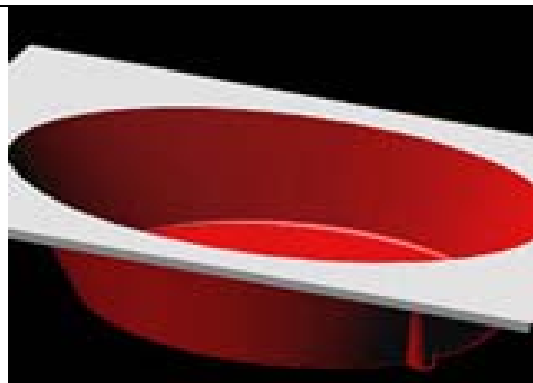
Phantom for compliance testing of handheld and body-mounted wireless devices in the frequency range of 30 MHz to 6 GHz. ELI4 is fully compatible with the latest draft of the standard IEC 62209 Part II and all known tissue simulating liquids. ELI4 has been optimized regarding its performance and can be integrated into our standard phantom tables. A cover prevents evaporation of the liquid. Reference markings on the phantom allow installation of the complete setup, including all predefined phantom positions and measurement grids, by teaching three points. The phantom is supported by software version DASY4/DASY5.5 and higher and is compatible with all SPEAG dosimetric probes and dipoles

**Shell Thickness:**  $2.0 \pm 0.2$  mm (sagging: <1%)

**Filling Volume:** Approx. 25 liters

**Dimensions:** Major ellipse axis: 600 mm

**Minor axis:** 400 mm 500mm



**Device Holder for SAM Twin Phantom**

**Construction:** In combination with the Twin SAM Phantom, the Mounting Device (made from POM) enables the rotation of the mounted transmitter in spherical coordinates, whereby the rotation point is the ear opening. The devices can be easily and accurately positioned according to IEC, IEEE, CENELEC, FCC or other specifications. The device holder can be locked at different phantom locations (left head, right head, and flat phantom).

**System Validation Kits for SAM Twin Phantom**

**Construction:** Symmetrical dipole with 1/4 balun Enables measurement of feedpoint impedance with NWA Matched for use near flat phantoms filled with brain simulating solutions Includes distance holder and tripod adaptor.

**Frequency:** 900, 1800, 2450, 5800 MHz

**ReTune loss:** > 20 dB at specified validation position

**Power capability:** > 100 W ( $f < 1\text{GHz}$ ); > 40 W ( $f > 1\text{GHz}$ )

**Dimensions:**

D835V2: dipole length: 161 mm; overall height: 340 mm

D1800V2: dipole length: 72.5 mm; overall height: 300 mm

D1900V2: dipole length: 67.7 mm; overall height: 300 mm

D2450V2: dipole length: 51.5 mm; overall height: 290 mm

D5GHzV2: dipole length: 20.6 mm; overall height: 300mm

**System Validation Kits for ELI4 phantom**

**Construction:** Symmetrical dipole with 1/4 balun Enables measurement of feedpoint impedance with NWA Matched for use near flat phantoms filled with brain simulating solutions Includes distance holder and tripod adaptor.

**Frequency:** 900, 1800, 2450, 5800 MHz

**ReTune loss:** > 20 dB at specified validation position

**Power capability:** > 100 W ( $f < 1\text{GHz}$ ); > 40 W ( $f > 1\text{GHz}$ )

**Dimensions:**

D835V2: dipole length: 161 mm; overall height: 340 mm

D1800V2: dipole length: 72.5 mm; overall height: 300 mm

D1900V2: dipole length: 67.7 mm; overall height: 300 mm

D2450V2: dipole length: 51.5 mm; overall height: 290 mm

D5GHzV2: dipole length: 20.6 mm; overall height: 300 mm



## 7. EVALUATION PROCEDURES

### DATA EVALUATION

The DASY 5 post processing software automatically executes the following procedures to calculate the field units from the microvolt readings at the probe connector. The parameters used in the evaluation are stored in the configuration modules of the software:

Probe parameters:	- Sensitivity	$Norm_i, a_{i0}, a_{i1}, a_{i2}$
	- Conversion factor	$ConvF_i$
	- Diode compression point	$dcp_i$
Device parameters:	- Frequency	$f$
	- Crest factor	$cf$
Media parameters:	- Conductivity	$\sigma$
	- Density	$\rho$

These parameters must be set correctly in the software. They can be found in the component documents or be imported into the software from the configuration files issued for the DASY 5 components. In the direct measuring mode of the multi-meter option, the parameters of the actual system setup are used. In the scan visualization and export modes, the parameters stored in the corresponding document files are used.

The first step of the evaluation is a linearization of the filtered input signal to account for the compression characteristics of the detector diode. The compensation depends on the input signal, the diode type and the DC-transmission factor from the diode to the evaluation electronics. If the exciting field is pulsed, the crest factor of the signal must be known to correctly compensate for peak power. The formula for each channel can be given as:

$$V_i = U_i + U_i^2 \cdot \frac{cf}{dcp_i}$$

with	$V_i$	= Compensated signal of channel i (i = x, y, z)
	$U_i$	= Input signal of channel i (i = x, y, z)
	$cf$	= Crest factor of exciting field (DASY 5 parameter)
	$dcp_i$	= Diode compression point (DASY 5 parameter)

From the compensated input signals the primary field data for each channel can be evaluated:

E-field probes:

$$E_i = \sqrt{\frac{V_i}{Norm_i \cdot ConvF}}$$

H-field probes:

$$H_i = \sqrt{V_i} \cdot \frac{a_{i10} + a_{i11}f + a_{i12}f^2}{f}$$

with	$V_i$	= Compensated signal of channel i (i = x, y, z)
	$Norm_i$	= Sensor sensitivity of channel i (i = x, y, z) $\mu V/(V/m)^2$ for E0field Probes
	$ConvF$	= Sensitivity enhancement in solution
	$a_{ij}$	= Sensor sensitivity factors for H-field probes
	$f$	= Carrier frequency (GHz)
	$E_i$	= Electric field strength of channel i in V/m
	$H_i$	= Magnetic field strength of channel i in A/m

The RSS value of the field components gives the total field strength (Hermitian magnitude):

$$E_{tot} = \sqrt{E_x^2 + E_y^2 + E_z^2}$$

The primary field data are used to calculate the derived field units.

$$SAR = E_{tot}^2 \cdot \frac{\sigma}{\rho \cdot 1000}$$

with  $SAR$  = local specific absorption rate in mW/g

$E_{tot}$  = total field strength in V/m

$\sigma$  = conductivity in [mho/m] or [Siemens/m]

$\rho$  = equivalent tissue density in g/cm<sup>3</sup>

Note that the density is normally set to 1 (or 1.06), to account for actual brain density rather than the density of the simulation liquid.

The power flow density is calculated assuming the excitation field as a free space field.

$$P_{pwe} = \frac{E_{tot}^2}{3770} \quad \text{or} \quad P_{pwe} = H_{tot}^2 \cdot 37.7$$

with  $P_{pwe}$  = Equivalent power density of a plane wave in mW/cm<sup>2</sup>

$E_{tot}$  = total electric field strength in V/m

$H_{tot}$  = total magnetic field strength in A/m

**SAR EVALUATION PROCEDURES**

The procedure for assessing the peak spatial-average SAR value consists of the following steps:

- **Power Reference Measurement**

The reference and drift jobs are useful jobs for monitoring the power drift of the device under test in the batch process. Both jobs measure the field at a specified reference position, at a selectable distance from the phantom surface. The reference position can be either the selected section's grid reference point or a user point in this section. The reference job projects the selected point onto the phantom surface, orients the probe perpendicularly to the surface, and approaches the surface using the selected detection method.

- **Area Scan**

The area scan is used as a fast scan in two dimensions to find the area of high field values, before doing a finer measurement around the hot spot. The sophisticated interpolation routines implemented in DASY 5 software can find the maximum locations even in relatively coarse grids. The scan area is defined by an editable grid. This grid is anchored at the grid reference point of the selected section in the phantom. When the area scan's property sheet is brought-up, grid was at to 15 mm by 15 mm and can be edited by a user.

- **Zoom Scan**

Zoom scans are used to assess the peak spatial SAR values within a cubic averaging volume containing 1 g and 10 g of simulated tissue. The default zoom scan measures 5 x 5 x 7 points within a cube whose base faces are centered around the maximum found in a preceding area scan job within the same procedure. If the preceding Area Scan job indicates more than one maximum, the number of Zoom Scans has to be enlarged accordingly (The default number inserted is 1).

- **Power Drift measurement**

The drift job measures the field at the same location as the most recent reference job within the same procedure, and with the same settings. The drift measurement gives the field difference in dB from the reading conducted within the last reference measurement. Several drift measurements are possible for one reference measurement. This allows a user to monitor the power drift of the device under test within a batch process. In the properties of the Drift job, the user can specify a limit for the drift and have DASY 5 software stop the measurements if this limit is exceeded.

- **Z-Scan**

The Z Scan job measures points along a vertical straight line. The line runs along the Z-axis of a one-dimensional grid. A user can anchor the grid to the current probe location. As with any other grids, the local Z-axis of the anchor location establishes the Z-axis of the grid.



## SPATIAL PEAK SAR EVALUATION

The procedure for spatial peak SAR evaluation has been implemented according to the IEEE1529 standard. It can be conducted for 1 g and 10 g.

The DASY 5 system allows evaluations that combine measured data and robot positions, such as:

- maximum search
- extrapolation
- boundary correction
- peak search for averaged SAR

During a maximum search, global and local maximum searches are automatically performed in 2-D after each Area Scan measurement with at least 6 measurement points. It is based on the evaluation of the local SAR gradient calculated by the Quadratic Shepard's method. The algorithm will find the global maximum and all local maxima within -2 dB of the global maxima for all SAR distributions.

### Extrapolation

Extrapolation routines are used to obtain SAR values between the lowest measurement points and the inner phantom surface. The extrapolation distance is determined by the surface detection distance and the probe sensor offset. Several measurements at different distances are necessary for the extrapolation.

Extrapolation routines require at least 10 measurement points in 3-D space. They are used in the Cube Scan to obtain SAR values between the lowest measurement points and the inner phantom surface. The routine uses the modified Quadratic Shepard's method for extrapolation. For a grid using 5x5x7 measurement points with 5mm resolution amounting to 343 measurement points, the uncertainty of the extrapolation routines is less than 1% for 1 g and 10 g cubes.

### Boundary effect

For measurements in the immediate vicinity of a phantom surface, the field coupling effects between the probe and the boundary influence the probe characteristics. Boundary effect errors of different dosimetric probe types have been analyzed by measurements and using a numerical probe model. As expected, both methods showed an enhanced sensitivity in the immediate vicinity of the boundary. The effect strongly depends on the probe dimensions and disappears with increasing distance from the boundary. The sensitivity can be approximately given as:

$$S \approx S_o + S_b \exp\left(-\frac{z}{a}\right) \cos\left(\pi \frac{z}{\lambda}\right)$$

Since the decay of the boundary effect dominates for small probes ( $a \ll \lambda$ ), the cos-term can be omitted. Factors  $S_b$  (parameter Alpha in the DASY 5 software) and  $a$  (parameter Delta in the DASY 5 software) are assessed during probe calibration and used for numerical compensation of the boundary effect. Several simulations and measurements have confirmed that the compensation is valid for different field and boundary configurations.

This simple compensation procedure can largely reduce the probe uncertainty near boundaries. It works well as long as:

- the boundary curvature is small
- the probe axis is angled less than 30° to the boundary normal
- the distance between probe and boundary is larger than 25% of the probe diameter
- the probe is symmetric (all sensors have the same offset from the probe tip)

Since all of these requirements are fulfilled in a DASY 5 system, the correction of the probe boundary effect in the vicinity of the phantom surface is performed in a fully automated manner via the measurement data extraction during post processing.

## **8. MEASUREMENT UNCERTAINTY**

Per KDB865664 D01 SAR Measurement 100 MHz to 6 GHz, when the highest measured 1-g SAR within a frequency band is  $< 1.5 \text{ W/kg}$ , the extensive SAR measurement uncertainty analysis described in IEEE Std 1528-2003 is not required in SAR reports submitted for equipment approval. The equivalent ratio (1.5/1.6) is applied to extremity and occupational exposure conditions.



## 9. EXPOSURE LIMIT

(A). Limits for Occupational/Controlled Exposure (W/kg)

Whole-Body	Partial-Body	Hands, Wrists, Feet and Ankles
0.4	8.0	20.0

(B). Limits for General Population/Uncontrolled Exposure (W/kg)

Whole-Body	Partial-Body	Hands, Wrists, Feet and Ankles
0.08	1.6	4.0

**Note:** **Whole-Body SAR** is averaged over the entire body, **partial-body SAR** is averaged over any 1 gram of tissue defined as a tissue volume in the shape of a cube. **SAR for hands, wrists, feet and ankles** is averaged over any 10 grams of tissue defined as a tissue volume in the shape of a cube.

**Population/Uncontrolled Environments** are defined as locations where there is the exposure of individuals who have no knowledge or control of their exposure.

**Occupational/Controlled Environments** are defined as locations where there is exposure that may be incurred by people who are aware of the potential for exposure, (i.e. as a result of employment or occupation).

## 10. EUT ARRANGEMENT

Please refer to IEEE1528-2013 illustration below.

### 10.1 BODY WORN TEST

#### Body-worn Accessory Exposure Conditions

- (1) To position the EUT parallel to the phantom surface.
- (2) To adjust the EUT parallel to the flat phantom.
- (3) To adjust the distance between the EUT surface and the flat phantom to 0mm.

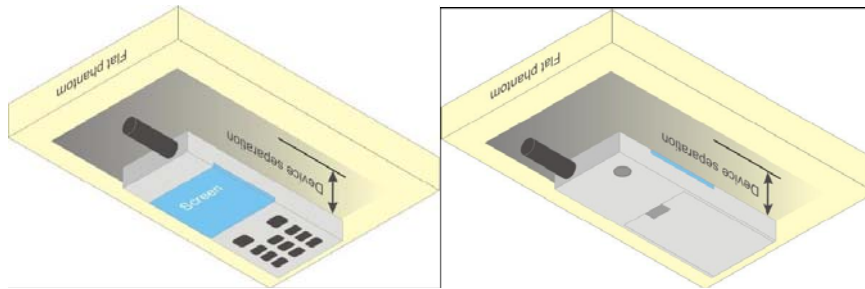


Illustration for Body Worn Position

## 11. MEASUREMENT RESULTS

### 11.1 TEST LIQUIDS CONFIRMATION

#### SIMULATED TISSUE LIQUID PARAMETER CONFIRMATION

The dielectric parameters were checked prior to assessment using the DAK-3.5 dielectric probe kit. The dielectric parameters measured are reported in each correspondent section.

#### KDB865664 D01 RECOMMENDED TISSUE DIELECTRIC PARAMETERS

The head and Body tissue dielectric parameters recommended by the KDB865664 D01 have been incorporated in the following table.

Target Frequency (MHz)	Head		Body	
	$\epsilon_r$	$\sigma$ (S/m)	$\epsilon_r$	$\sigma$ (S/m)
150	52.3	0.76	61.9	0.80
300	45.3	0.87	58.2	0.92
450	43.5	0.87	56.7	0.94
835	41.5	0.90	55.2	0.97
900	41.5	0.97	55.0	1.05
915	41.5	0.98	55.0	1.06
1450	40.5	1.20	54.0	1.30
1610	40.3	1.29	53.8	1.40
1800-2000	40.0	1.40	53.3	1.52
2450	39.2	1.80	52.7	1.95
3000	38.5	2.40	52.0	2.73
5800	35.3	5.27	48.2	6.00

( $\epsilon_r$  = relative permittivity,  $\sigma$  = conductivity and  $\rho = 1000 \text{ kg/m}^3$ )

## 11.2 LIQUID MEASUREMENT RESULTS

The following table show the measuring results for simulating liquid:

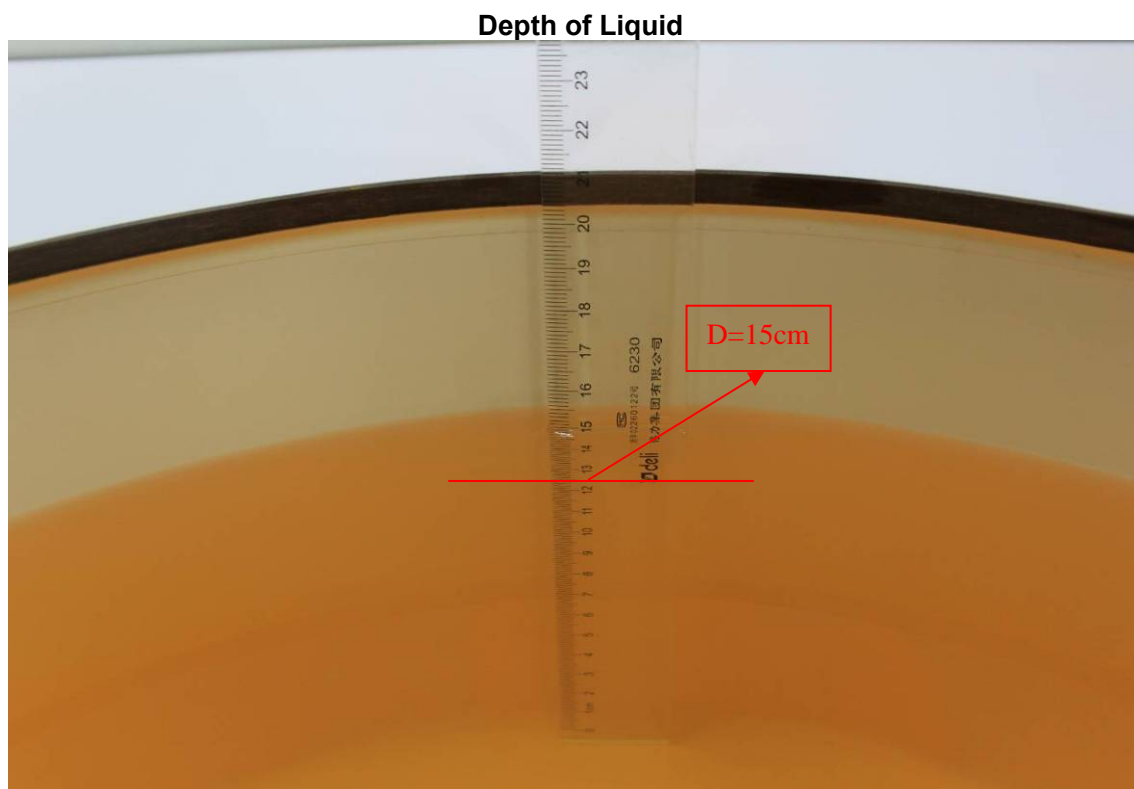
Liquid Type	Liquid Temp. (°C)	Parameters	Target	Measured	Deviation (%)	Limited (%)	Measured Date
Body835	21.5	Permittivity( $\epsilon$ )	55.20	55.48	0.51	$\pm 5$	2015-12-25
		Conductivity( $\sigma$ )	0.97	0.96	-1.20	$\pm 5$	
Body1900	21.5	Permittivity( $\epsilon$ )	53.30	51.65	-3.10	$\pm 5$	2015-12-25
		Conductivity( $\sigma$ )	1.52	1.55	1.71	$\pm 5$	

### 11.3 SYSTEM PERFORMANCE CHECK

The system performance check is performed prior to any usage of the system in order to guarantee reproducible results. The system performance check verifies that the system operates within its specifications of  $\pm 10\%$ . The system performance check results are tabulated below. And also the corresponding SAR plot is attached as well in the SAR plots files.

#### SYSTEM PERFORMANCE CHECK MEASUREMENT CONDITIONS

- The measurements were performed in the flat section of the SAM twin phantom filled with head and body simulating liquid of the following parameters.
- The DASY5 system with an E-field probe EX3DV4 SN: 3798 was used for the measurements.
- The dipole was mounted on the small tripod so that the dipole feed point was positioned below the center marking of the flat phantom section and the dipole was oriented parallel to the body axis (the long side of the phantom). The standard measuring distance was 15 mm (below 1 GHz) and 10 mm (above 1 GHz) from dipole center to the simulating liquid surface.
- The coarse grid with a grid spacing of 10mm was aligned with the dipole.
- Special 7x7x7 fine cube was chosen for cube integration ( $dx=5$  mm,  $dy=5$  mm,  $dz=5$  mm).
- Distance between probe sensors and phantom surface was set to 2 mm.
- The dipole input power was  $250\text{mW} \pm 3\%$ .
- The results are normalized to 1 W input power.



- Note: For SAR testing, the depth is 15cm shown above

**SYSTEM PERFORMANCE CHECK RESULTS**

Liquid Type	Ambient Temp. (°C)	Liquid Temp. (°C)	Input Power (W)	Measured SAR <sub>1g</sub> (W/Kg)	1W Target SAR <sub>1g</sub> (W/Kg)	1W Normalized SAR <sub>1g</sub> (W/Kg)	Deviation (%)	Limited (%)	Date
Body835	22	21.5	0.25	2.41	9.53	9.64	1.15	± 10	2015-12-25
Body1900	22	21.5	0.25	10.26	40.50	41.04	1.33	± 10	2015-12-25

## 11.4 EUT TUNE-UP PROCEDURES AND TEST MODE

The following procedure had been used to prepare the EUT for the SAR test.

To setup the desire channel frequency and the maximum output power. A Radio Communication Tester "CMU200" was used to program the EUT.

### General Note:

1. Per KDB 447498 D01, the maximum output power channel is used for SAR testing and for further SAR test reduction.
2. For body worn SAR testing, the EUT was set in GPRS 2 Tx slots for GSM850 and GPRS 2 Tx GSM1900 due to its highest frame-average power.

### GSM Conducted output power(dBm):

Band	GSM 850			GSM 1900		
Channel	128	190	251	512	661	810
Frequency(MHz)	824.2	836.6	848.8	1850.2	1880.0	1909.8
Maximum Burst-Averaged Output Power						
GPRS 8 (GMSK,1 Uplink)	32.14	32.08	32.03	29.73	29.65	29.57
GPRS 10 (GMSK,2 Uplink)	31.15	31.04	31.02	28.71	28.66	28.54
Maximum Frame-Averaged Output Power						
GPRS 8 (GMSK,1 Uplink)	23.11	23.05	23.00	20.70	20.62	20.54
GPRS 10 (GMSK,2 Uplink)	25.12	25.01	24.99	22.68	22.63	22.51

**Remark:** The frame-averaged power is linearly scaled the maximum burst-averaged power based on time slots. The calculated methods are shown as below:

Frame-averaged power = Burst-averaged power (1 Uplink) – 9.03 dBm

Frame-averaged power = Burst averaged power (2 Uplink) – 6.02 dBm

Frame-averaged power = Burst-averaged power (3 Uplink) – 4.26 dBm

Frame-averaged power = Burst averaged power (4 Uplink) – 3.01 dBm

### Note:

1. Both burst-averaged and calculated frame-averaged powers are included. Frame-averaged power was calculated from the measured burst-averaged power by converting the slot powers into linear units and calculating the energy over 8 timeslots.
2. Per KDB 447498 D01, the maximum output power channel is used for SAR testing and for further SAR test reduction.
3. Both burst-averaged and calculated frame-averaged powers are included. Frame-averaged power was calculated from the measured burst-averaged power by converting the slot powers into linear units and calculating the energy over 8 timeslots.
4. GPRS (GMSK) output powers were measured with coding scheme setting of 1 (CS1) on the base station simulator. CS1 was configured to measure GPRS output power measurements and SAR to ensure GMSK modulation in the signal. Our Investigation has shown that CS1 - CS4 settings do not have any impact on the output levels or modulation in the GPRS modes.

**Bluetooth 2.1 Conducted output power(dBm):**

Channel	Frequency	Average power(dBm)		
		Data Rate		
		1Mbps	2Mbps	3Mbps
CH00	2402MHZ	1.93	1.48	1.86
CH39	2441MHZ	2.18	1.88	2.16
CH78	2480MHZ	2.35	2.08	2.32

According to KDB447498 D01: The 1-g and 10-g SAR test exclusion thresholds for 100 MHz to 6 GHz at test separation distances  $\leq 50$  mm are determined by:

$[(\text{max. power of channel, including tune-up tolerance, mW}) / (\text{min. test separation distance, mm})] \cdot [\sqrt{f(\text{GHz})}] \leq 3.0$  for 1-g SAR and  $\leq 7.5$  for 10-g extremity SAR,<sup>24</sup> where

- $f(\text{GHz})$  is the RF channel transmit frequency in GHz
- Power and distance are rounded to the nearest mW and mm before calculation<sup>25</sup>
- The result is rounded to one decimal place for comparison
- 3.0 and 7.5 are referred to as the numeric thresholds in the step 2 below
- If the test separation distance (antenna-user) is  $< 5$ mm, 5mm is used for excluded SAR calculation

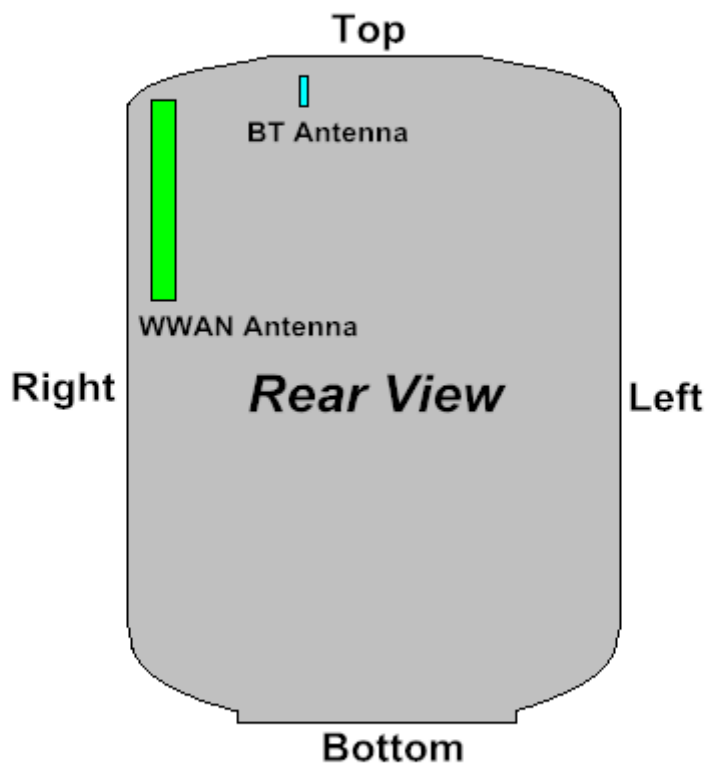
	Wireless Interface	Bluetooth
	Tune-up Maximum power (dBm)	3
	Tune-up Maximum rated power (mW)	1.995
Body	Antenna to user (mm)	5
	Frequency(GHz)	2.480
	SAR exclusion threshold	0.628

Per KDB 447498 D01 exclusion thresholds is  $[(\text{max. power of channel, including tune-up tolerance: } 1.995 \text{ mW}) / (\text{min. test separation distance: } 5 \text{ mm})] \cdot [\sqrt{2.480}] = 0.628 < 7.5$  for 1-g extremity SAR, So Bluetooth RF exposure evaluation is not required.



Mode	The Tune-up Maximum Power(Customer Declared)(dBm)	Range	Measured Conduct Maximum Power(dBm)
GPRS 850-1TS	32+/-1	31~33	32.14
GPRS 850-2TS	31+/-1	30~32	31.15
GPRS 1900-1TS	29+/-1	28~30	29.73
GPRS 1900-2TS	28+/-1	27~29	28.71
Bluetooth 1Mbps	2+/-1	1~3	2.35
Bluetooth 2Mbps	2+/-1	1~3	2.08
Bluetooth 3Mbps	2+/-1	1~3	2.32

So, they are in tune-up range and complied.

**11.5 SAR TEST CONFIGURATIONS****Antenna Position**

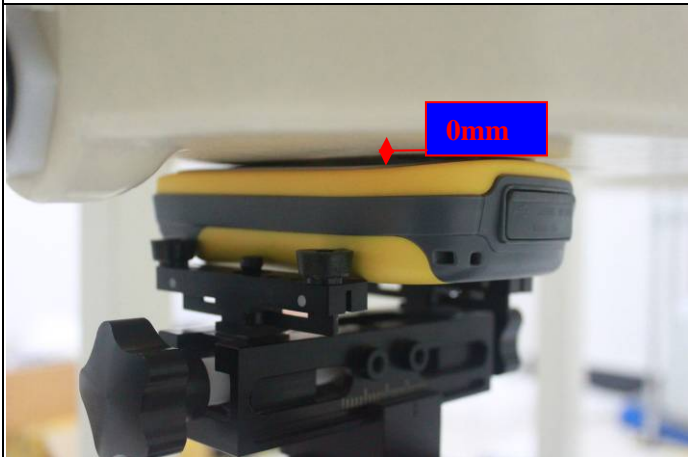
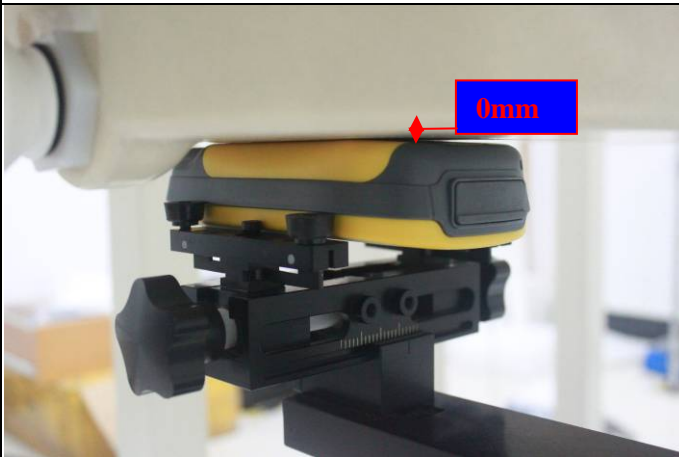
Antenna	Wireless Interface
WWAN Antenna	GPRS850/GPRS1900
WLAN Antenna	Bluetooth

**Test Mode**

GPRS 850/GPRS1900	Data transmission mode
-------------------	------------------------

## 11.6 EUT SETUP PHOTOS

### Body position

Front in body position	Rear in body position
	
<u>EUT Setup Configuration 1</u>	<u>EUT Setup Configuration 2</u>

## 11.7 SAR MEASUREMENT RESULTS

Band	Mode	Test Position	Dist. (mm)	Ch.	Freq. (MHZ)	max Power (dBm)	Tune-Up Limit (dBm)	Scaling Factor	Power Drift (dB)	SAR1g (mW/g)	Scaled SAR1g (mW/g)
GSM850	GPRS 2slots	Front	0	128	824.2	31.15	32	1.216	0.01	0.010	0.012
GSM850	GPRS 2slots	Rear	0	128	824.2	31.15	32	1.216	0.16	0.042	0.051
GSM1900	GPRS 2slots	Front	0	512	1850.2	28.71	29	1.069	0.14	0.055	0.059
GSM1900	GPRS 2slots	Rear	0	512	1850.2	28.71	29	1.069	-0.01	0.159	0.170

**Note:**

According to October 2013TCB Workshop, For GSM / GPRS / EGPRS, the number of time slots to test for SAR should correspond to the highest source-based time-averaged maximum output power configuration, Considering the possibility of operation for body-worn SAR testing, the EUT was set in GPRS (2Tx slots) for GSM850/GSM1900 band due to its highest frame-average power.

**Repeated SAR measurement**

Band	Mode	Test Position	Dist. (mm)	Ch.	Freq. (MHZ)	max Power (dBm)	Tune-Up Limit (dBm)	Scaling Factor	Power Drift (dB)	SAR10g (mW/g)	Scaled SAR10g (mW/g)
--	--	--	--	--	--	--	--	--	--	--	--

**11.8 REPEATED SAR MEASUREMENT**

Band	Mode	Test Position	Dist. (mm)	Ch.	Original Measured SAR10g (mW/g)	1st Repeated SAR10g (mW/g)	Ratio	Original Measured SAR10g (mW/g)	2nd Repeated SAR10g (mW/g)	Ratio
--	--	--	--	--	--	--	--	--	--	--

**Note:**

1. Per KDB 865664 ,for each frequency band, repeated SAR measurement is required only when the measured SAR is  $\geq 0.8\text{W/Kg}$
2. Per KDB 865664 ,if the ratio of largest to smallest SAR for the original and first repeated measurement is  $\leq 1.2$  and the measured SAR  $< 1.45\text{W/Kg}$ ,only one repeated measurement is required.
3. Perform a second repeated measurement only if the ratio of largest to smallest SAR for the original and first repeated measurements is  $> 1.20$  or when the original or repeated measurement is  $\geq 1.45\text{ W/kg}$
4. The ratio is the difference in percentage between original and repeated measured SAR.

## 12. SAR HANDSETS MULTI XMITER ASSESSMENT

	Position	Applicable Combination
Simultaneous Transmission	Body-worn	WWAN + BT

**Note:**

1. The reported SAR summation is calculated based on the same configuration and test position.
2. For simultaneous transmission analysis, Bluetooth SAR is estimated per KDB 447498 D01v06 based on the formula below.  
(max. power of channel, including tune-up tolerance, mW)/(min. test separation distance, mm)] • [ √ f(GHz)/x] W/kg  
for test separation distances ≤ 50 mm; where x = 7.5 for 1-g SAR, and x = 18.75 for 10-g SAR.  
0.4 W/kg for 1-g SAR and 1.0 W/kg for 10-g SAR, when the test separation distances is > 50 mm.

**Bluetooth:**

	Max power	Body (5 mm distance) W/kg
Estimated SAR (W/kg)	3	0.084

3. Per KDB 447498 D01v06, simultaneous transmission SAR is compliant if,
  - 1) Scalar SAR summation < 1.6W/kg
  - 2) SPLSR = (SAR1 + SAR2)1.5 / (min. separation distance, mm), and the peak separation distance is determined from the square root of [(x1-x2)2 + (y1-y2)2 + (z1-z2)2], where (x1, y1, z1) and (x2, y2, z2) are the coordinates of the extrapolated peak SAR locations in the zoom scan  
If SPLSR ≤ 0.04, simultaneously transmission SAR is compliant
  - 3) Simultaneously transmission SAR measurement for Partial-Body the reported multi-band SAR < 1.6W/kg

**Result of SUM  $\Sigma$ SAR<sub>1g</sub> for Body worn**

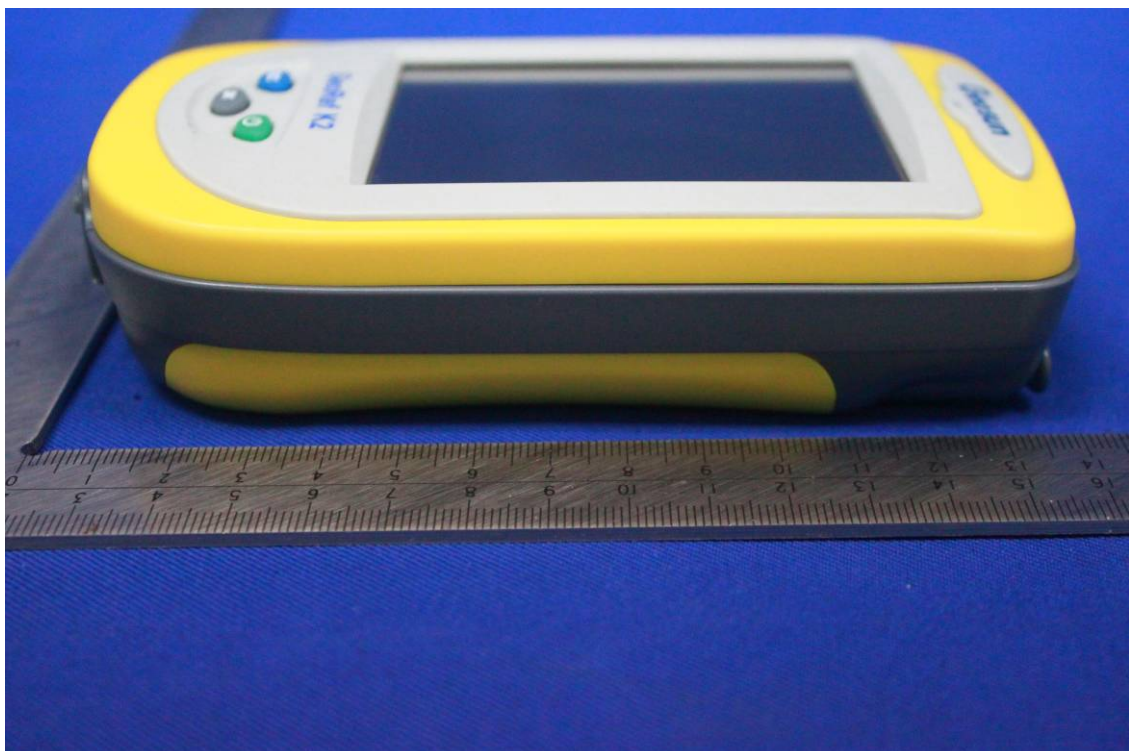
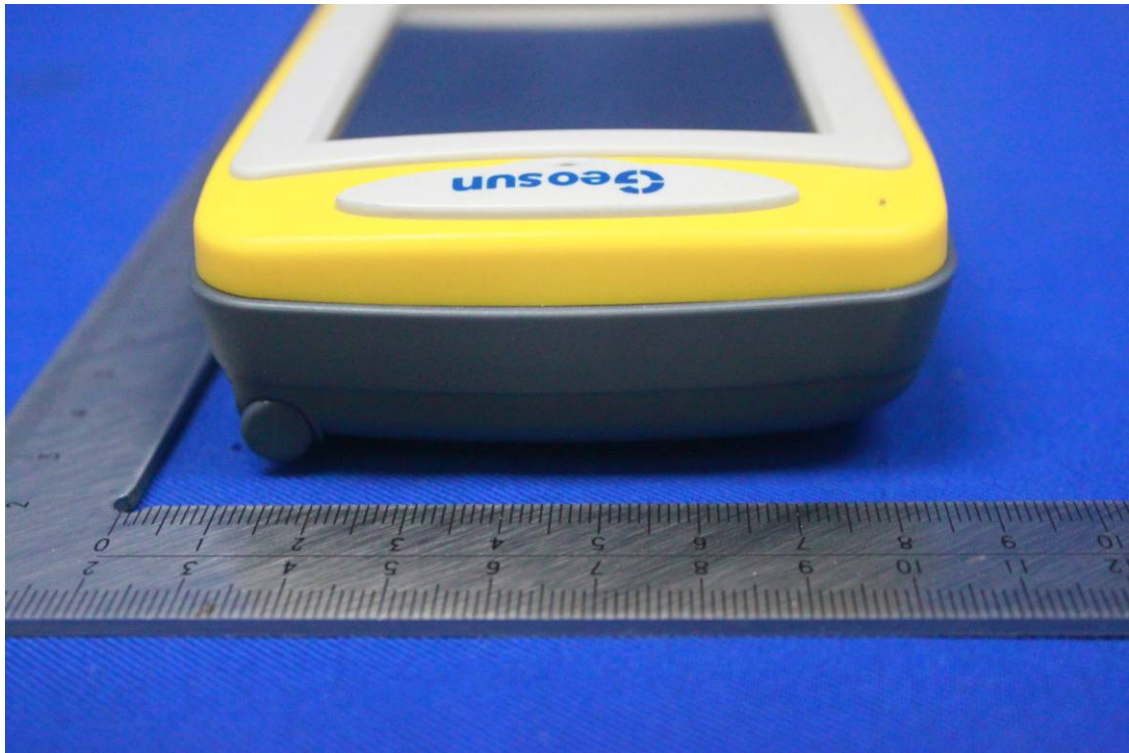
SUM $\Sigma$ SAR (GPRS850+ Bluetooth)				
Position	Distance	Stand alone SAR(1g) [W/kg]		SUM SAR(1g/10g)[W/kg]
	[mm]	GPRS850	Bluetooth	WWAN + Bluetooth
Front	0	0.012	0.084	0.096
Rear	0	0.051	0.084	0.135

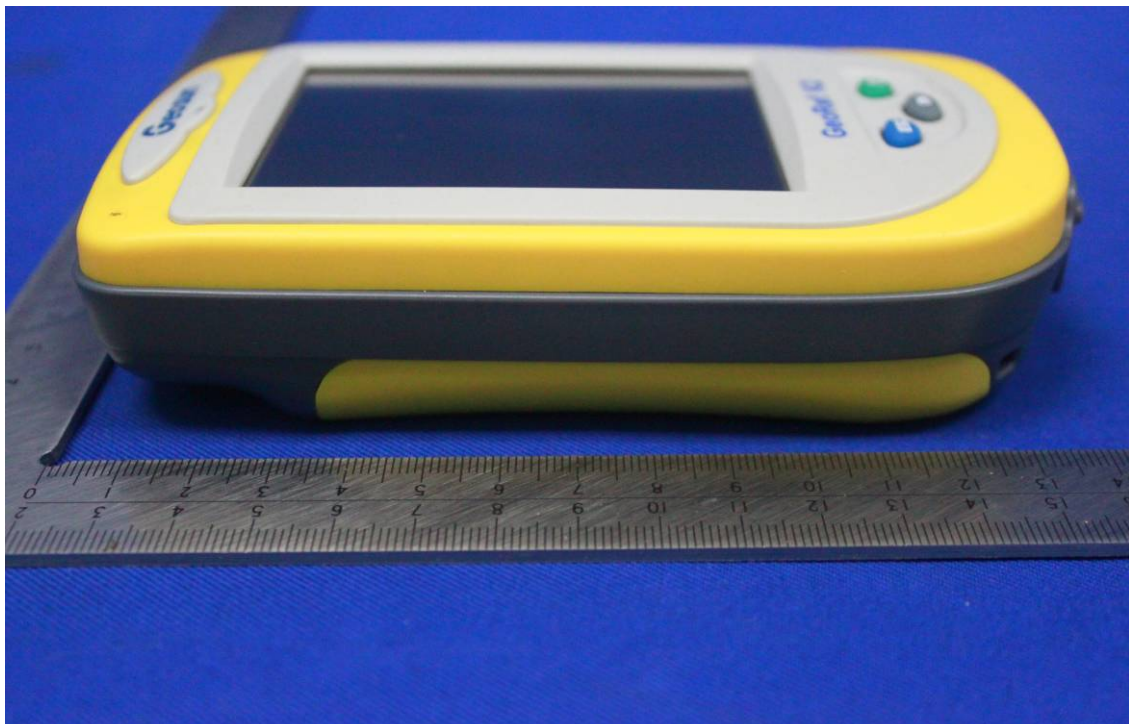
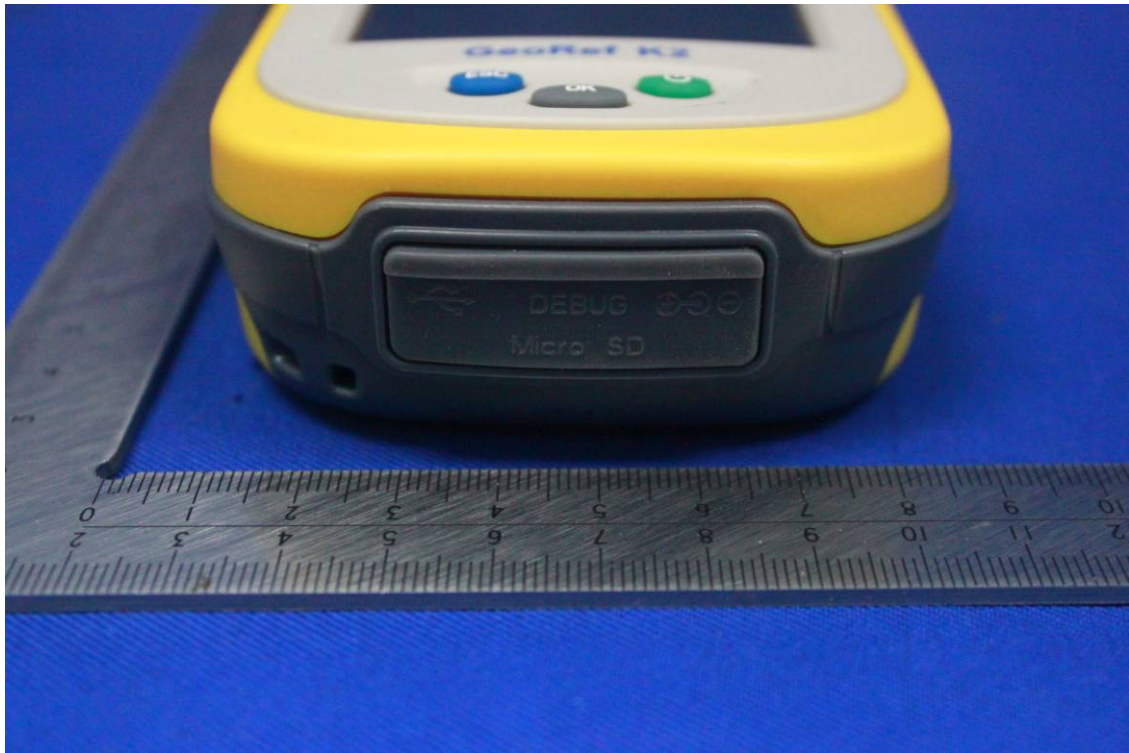
SUM $\Sigma$ SAR (GPRS1900+ Bluetooth)				
Position	Distance	Stand alone SAR(1g) [W/kg]		SUM SAR(1g/10g)[W/kg]
	[mm]	GPRS1900	Bluetooth	WWAN + Bluetooth
Front	0	0.059	0.084	0.143
Rear	0	0.170	0.084	0.254

### 13. EUT PHOTO













**14. EQUIPMENT LIST & CALIBRATION STATUS**

Name of Equipment	Manufacturer	Type/Model	Serial Number	Last Calibration	Calibration Due
P C	HP	Core(rm)3.16G	CZCO48171H	N/A	N/A
Signal Generator	Agilent	E8257C	MY43321570	11/20/2015	11/19/2016
S-Parameter Network Analyzer	Agilent	E5071B	MY42301382	03/03/2015	03/02/2016
Wireless Communication Test Set	R&S	CMU200	SN:109525	01/22/2015	01/21/2016
Power meter	Anritsu	ML2495A	1445010	03/03/2015	03/02/2016
Power sensor	Anritsu	MA2411B	1339220	03/03/2015	03/02/2016
E-field PROBE	SPEAG	EX3DV4	3798	07/24/2015	07/23/2016
DAE	SPEAG	DEA4	1245	07/22/2015	07/21/2016
DIPOLE 835MHZ ANTENNA	SPEAG	D835V2	4d114	07/30/2013	07/27/2016
DIPOLE 1900MHZ ANTENNA	SPEAG	D1900V2	5d136	07/22/2013	07/19/2016
DIPOLE 2450MHZ ANTENNA	SPEAG	D2450V2	817	07/31/2013	07/28/2016
DUMMY PROBE	SPEAG	DP_2	SPDP2001AA	N/A	N/A
SAM PHANTOM (ELI4 v4.0)	SPEAG	QDOVA001BB	1102	N/A	N/A
Twin SAM Phantom	SPEAG	QD000P40CD	1609	N/A	N/A
ROBOT	SPEAG	TX60	F10/5E6AA1/A101	N/A	N/A
ROBOT KRC	SPEAG	CS8C	F10/5E6AA1/C101	N/A	N/A
LIQUID CALIBRATION KIT	ANTENNESSA	41/05 OCP9	00425167	N/A	N/A

## 15. FACILITIES

All measurement facilities used to collect the measurement data are located at

☒ No.10, Weiye Rd., Innovation Park, Eco & Tec. Development Part, Kunshan City, Jiangsu Province, China.

## 16. REFERENCES

- [1] Federal Communications Commission, "Report and order: Guidelines for evaluating the environmental effects of radiofrequency radiation", Tech. Rep. FCC 96-326, FCC, Washington, D.C. 20554, 1996.
- [2] David L. Means Kwok Chan, Robert F. Cleveland, "Evaluating compliance with FCC guidelines for human exposure to radiofrequency electromagnetic fields", Tech. Rep., Federal Communication Commission, Office of Engineering & Technology, Washington, DC, 1997.
- [3] Thomas Schmid, Oliver Egger, and Niels Kuster, "Automated E-field scanning system for dosimetric assessments", IEEE Transactions on Microwave Theory and Techniques, vol. 44, pp. 105-113, Jan. 1996.
- [4] Niels Kuster, Ralph Kastle, and Thomas Schmid, "Dosimetric evaluation of mobile communications equipment with known precision", IEEE Transactions on Communications, vol. E80-B, no. 5, pp. 645-652, May 1997.
- [5] CENELEC, "Considerations for evaluating of human exposure to electromagnetic fields (EMFs) from mobile telecommunication equipment (MTE) in the frequency range 30MHz – 6GHz", Tech. Rep., CENELEC, European Committee for Electrotechnical Standardization, Brussels, 1997.
- [6] ANSI, ANSI/IEEE C95.1-1999: IEEE Standard for Safety Levels with Respect to Human Exposure to Radio Frequency Electromagnetic Fields, 3 kHz to 300 GHz, The Institute of Electrical and Electronics Engineers, Inc., New York, NY 10017, 1992.
- [7] Katja Pokovic, Thomas Schmid, and Niels Kuster, "Robust setup for precise calibration of E-field probes in tissue simulating liquids at mobile communications frequencies", in ICECOM '97, Dubrovnik, October 15-17, 1997, pp. 120-124.
- [8] Katja Pokovic, Thomas Schmid, and Niels Kuster, "E-field probe with improved isotropy in brain simulating liquids", in Proceedings of the ELMAR, Zadar, Croatia, 23-25 June, 1996, pp. 172-175.
- [9] Volker Hombach, Klaus Meier, Michael Burkhardt, Eberhard Kuhn, and Niels Kuster, "The dependence of EM energy absorption upon human head modeling at 900 MHz", IEEE Transactions on Microwave Theory and Techniques, vol. 44, no. 10, pp. 1865-1873, Oct. 1996.
- [10] Klaus Meier, Ralf Kastle, Volker Hombach, Roger Tay, and Niels Kuster, "The dependence of EM energy absorption upon human head modeling at 1800 MHz", IEEE Transactions on Microwave Theory and Techniques, Oct. 1997, in press.
- [11] W. Gander, Computermathematik, Birkhaeuser, Basel, 1992.
- [12] W. H. Press, S. A. Teukolsky, W. T. Vetterling, and B. P. Flannery, Numerical Recipes in C, The Art of Scientific Computing, Second Edition, Cambridge University Press, 1992. Dosimetric Evaluation of Sample device, month 1998 9
- [13] NIS81 NAMAS, "The treatment of uncertainty in EMC measurement", Tech. Rep., NAMAS Executive, National Physical Laboratory, Teddington, Middlesex, England, 1994.
- [14] Barry N. Taylor and Christ E. Kuyatt, "Guidelines for evaluating and expressing the uncertainty of NIST measurement results", Tech. Rep., National Institute of Standards and Technology, 1994. Dosimetric Evaluation of Sample device, month 1998 10

## 17. ATTACHMENTS

Exhibit	Content
1	System Performance Check Plots
2	Dipole calibration report D835V2 SN:4d114
3	Dipole calibration report D1900V2-SN:5d136
4	Probe calibration report EX3DV4 SN3798
5	DAE calibration report DEA4 SD000D04BM SN:1245
6	SAR Test Plots

**APPENDIX A: PLOTS OF PERFORMANCE CHECK**

The plots are showing as followings.

Test Laboratory: Compliance Certification Services Inc.

Date: 12/25/2015

**System Performance Check-Body D835****DUT: Dipole 835 MHz ; Type: D835V2; Serial: 4d114**

Communication System: UID 0, CW; Communication System Band: D835 (835.0 MHz); Frequency: 835 MHz; Duty Cycle: 1:1

Medium parameters used:  $f = 835$  MHz;  $\sigma = 0.9584$  S/m;  $\epsilon_r = 55.483$ ;  $\rho = 1000$  kg/m<sup>3</sup>

Room Ambient Temperature: 22°C; Liquid Temperature: 21.5°C

Phantom section: Flat Section

Measurement Standard: DASY5 (IEEE/IEC/ANSI C63.19-2007)

DASY Configuration:

- Probe: EX3DV4 - SN3798; ConvF(8.87, 8.87, 8.87); Calibrated: 7/24/2015;
- Sensor-Surface: 2mm (Mechanical Surface Detection)
- Electronics: DAE4 Sn1245; Calibrated: 7/22/2015
- Phantom: Twin SAM Phantom; Type: QD 000 P40 CD; Serial: 1609
- DASY52 52.8.8(1222);
- SEMCAD X Version 14.6.10 (7331)

**System Performance Check at Frequencies Low 1 GHz/dist=15mm, Pin=250 mW(EX-Probe)/Area Scan (7x12x1):** Measurement grid: dx=15mm, dy=15mm

Maximum value of SAR (measured) = 2.89 W/kg

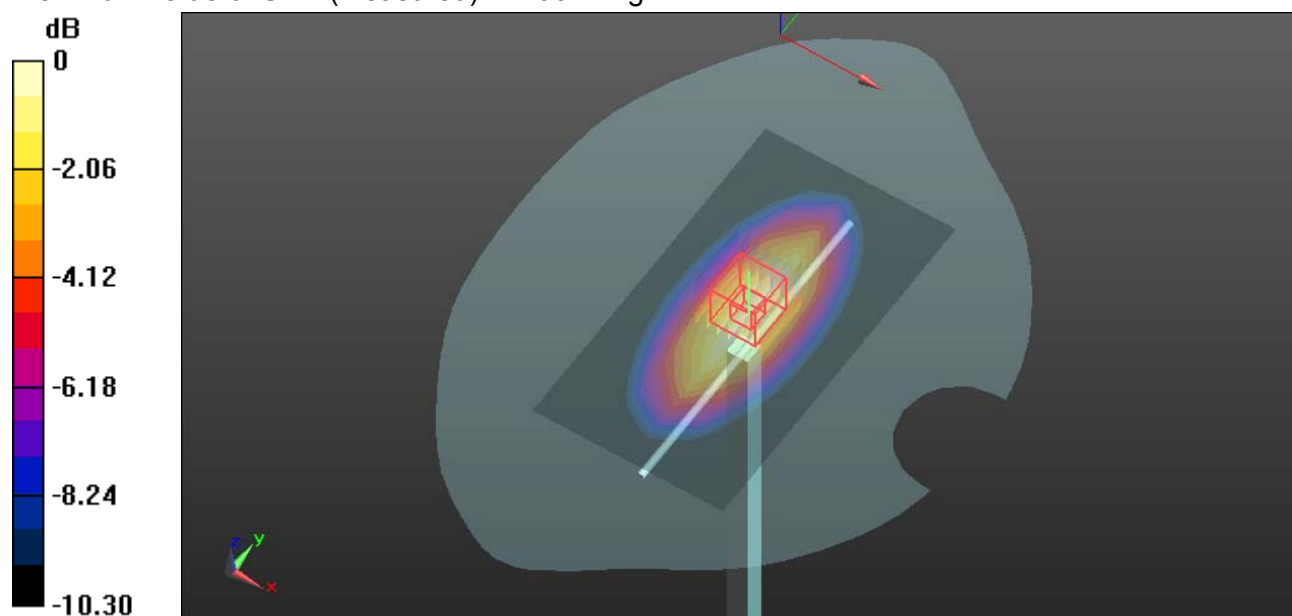
**System Performance Check at Frequencies Low 1 GHz/dist=15mm, Pin=250 mW(EX-Probe)/Zoom Scan (7x7x7) (7x7x7)/Cube 0:** Measurement grid: dx=5mm, dy=5mm, dz=5mm

Reference Value = 56.79 V/m; Power Drift = 0.03 dB

Peak SAR (extrapolated) = 3.41 W/kg

**SAR(1 g) = 2.41 W/kg; SAR(10 g) = 1.62 W/kg**

Maximum value of SAR (measured) = 2.93 W/kg



0 dB = 2.93 W/kg = 4.67 dBW/kg



Test Laboratory: Compliance Certification Services Inc.

Date: 12/25/2015

**System Performance Check-Body D1900****DUT: Dipole 1900 MHz ; Type: D1900V2; Serial: 5d136**

Communication System: UID 0, CW; Communication System Band: D1900 (1900.0 MHz);

Frequency: 1900 MHz; Duty Cycle: 1:1

Medium parameters used:  $f = 1900$  MHz;  $\sigma = 1.546$  S/m;  $\epsilon_r = 51.65$ ;  $\rho = 1000$  kg/m<sup>3</sup>

Room Ambient Temperature: 22°C; Liquid Temperature: 21.5°C

Phantom section: Flat Section

Measurement Standard: DASY5 (IEEE/IEC/ANSI C63.19-2007)

DASY Configuration:

- Probe: EX3DV4 - SN3798; ConvF(7.29, 7.29, 7.29); Calibrated: 7/24/2015;
- Sensor-Surface: 2mm (Mechanical Surface Detection)
- Electronics: DAE4 Sn1245; Calibrated: 7/22/2015
- Phantom: Twin SAM Phantom; Type: QD 000 P40 CD; Serial: 1609
- DASY52 52.8.8(1222);
- SEMCAD X Version 14.6.10 (7331)

**System Performance Check at Frequencies above 1 GHz/Pin=250 mW, dist=10mm (EX-Probe)/Area Scan (7x8x1):** Measurement grid: dx=15mm, dy=15mm

Maximum value of SAR (measured) = 14.3 W/kg

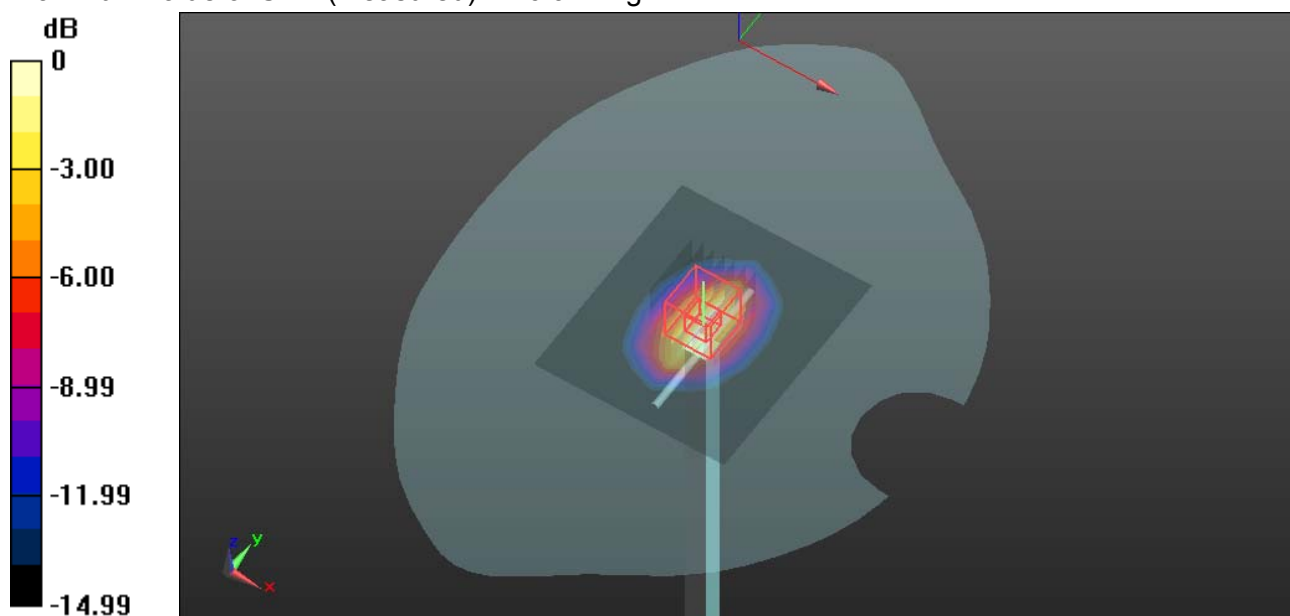
**System Performance Check at Frequencies above 1 GHz/Pin=250 mW, dist=10mm (EX-Probe)/Zoom Scan (7x7x7) (7x7x7)/Cube 0:** Measurement grid: dx=5mm, dy=5mm, dz=5mm

Reference Value = 101.2 V/m; Power Drift = -0.01 dB

Peak SAR (extrapolated) = 22.3 W/kg

**SAR(1 g) = 10.26 W/kg; SAR(10 g) = 5.49 W/kg**

Maximum value of SAR (measured) = 16.9 W/kg



0 dB = 16.9 W/kg = 12.28 dBW/kg

**APPENDIX B: DASY CALIBRATION CERTIFICATE**

The DASY Calibration Certificates are showing in the file named Appendix B: DASY Calibration Certificate.

**APPENDIX C: PLOTS OF SAR TEST RESULT**

The plots are showing in the file named Appendix C Plots of SAR Test Result

**END REPORT**