

samtech 

IP Camera



MODEL:IP-9013



## instruction manual

There may be some difference between instruction manual and actual use caused by software upgrades. Please subject to the actual use of final products only.

## 9. FAQ

**Q:** Open the app software, the image response slowly.

**A:** Mobile phone users use 3G or 4G networks to connect the camera, there may be a delay about 3-4 seconds. Camera will start to upload images after connected.

If images reflect very slowly, please check the network's usage and close some vacant devices sharing the network. The camera's upload images is 1280 x720p, so network uploading speed needs to be more than 1MB/S. To ensure smooth transfer, please close some extra wireless devices, and also ensure the effective transmission distance between the camera and router.

**Q:** Can't play Images Record List.

**A:** Samtech IP camera record images support 1280X720 HD video, it is FLV format, some smartphone can't play it, please download the FLV format Player from internet.

**Q:** Camera can't read the QR code or the view image is not clear.

**A:** Reset the device (8) and try again. If still can't read, Please use the Smartlink or connect the camera with router by wired cable, make sure the mobile phone and camera are in the same LAN, and add the device by refreshing device list. After camera being added, check the real-time view image to observe if the camera's lens is smudgy, if yes, use a clean soft cloth to swipe the dirty away then.

If the problem still exists after all above, please turn and adjust the camera focusing ring slowly by hand, while you can see images on the mobile phone. Adjust it till image becomes the best one.

The diagram bellow shows how to adjust camera resolution by focus ring:



## Tablet of Contents

<b>1. To know your Wifi IP Camera</b> .....	1
1.1 Front panel .....	1
1.2 Back Panel .....	1
<b>2. Get the latest version of Samtech App</b> .....	2
<b>3. Registering an account, add a device</b> .....	3
<b>4. Adding new device(Samtech IP camera)</b> .....	4
4.1 Smartlink .....	4
4.2 Add new device by manual.....	5
4.3 Add device by Ethernet .....	5
4.4 Set wifi by QR Code.....	6
<b>5. How to use IP camera</b> .....	7
5.1 smartphone or Tablet PC monitoring and recording .....	7
5.2 PC (Windows OS) Monitoring and Recording .....	8
<b>6. How to enroll wireless sensors to Samtech IP camera?</b> .....	9
<b>7. Important Settings</b> .....	13
7.1 Security Setting.....	13
7.2 Alarm Setting.....	14
7.3 Device upgrading .....	14
<b>8. How to reset to factory mode</b> .....	14
<b>9. FAQ</b> .....	15

This is the simple tutorial which can guide you to use the Samtech IP camera smartphone App. This free APP has rich features to allow you protect and monitor your home. If you don't have this product, you may buy this IP camera from here. Let's begin from its introduction; Samtech is a free smartphone APP which is designed for Samtech IP camera, the new generation home IP camera system. Samtech IP camera uses advanced "Peer to Peer" network transmission technology, remote monitoring, video calling has never been easier, it's the best way to engage with your family and friends.

## 1. To know your Wifi IP Camera

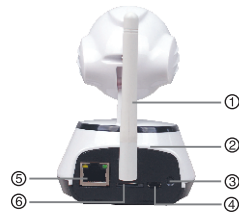
### 1.1 Front panel

1. Photosensitive electric resistance
2. 3.6mm wide-angle lens
3. 11 IR light
4. Network light
5. Alarm light
6. Defense area light
7. Record light




### 1.2 Back panel

1. WiFi Antenna
2. Built-in microphone
3. Reset
4. Power supply socket(DC 5V)
5. TF card socket
6. Ethernet socket



## 7.2 Alarm Setting

**Safety Precaution:** Tap the icon  right after the device name to make it locked. After it is locked, the device will take initiative to push alert to the APP when warning signal happens, and same time it will capture the image and send it to the alarm mailbox.

**Push account, alarm mailbox:** Both are used to receive the warning alarm.

**Motion detection:** the scene change means alarm happen.

**buzzer:** open the buzzer, sirens will scream until removal when there is a warning signal.

## 7.3 Device upgrading

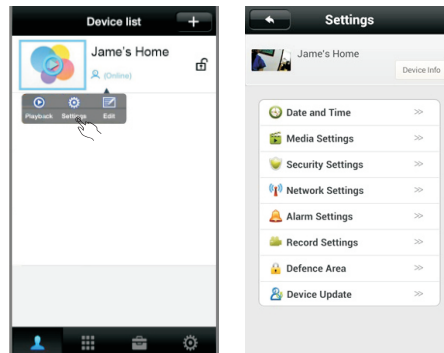
Click contacts>setting>inspect device updates: click "new version number will be prompted if new version comes out, the user can choose to whether upgrade."

## 8. How to reset to factory mode

Reset will erase all data: including WIFI info, access password, alarm info, and protection zones' info etc. The steps are as below: Find the reset hole at the bottom, insert a needle and press it in the standby mode, a very small and short sound "ding" will be heard, long press it for more than three seconds, a louder and longer sound "ding" will be heard, same time the four light indicators light on once and reset be successful.

## 7. Important Settings

Click "Device name (i.e Jame's home), the camera's menu will pop-up, choosing "Settings".



### 7.1 Security Setting

**Admin Password:** password for administer only. Administer can do both monitoring and setting when defense.

**Guest Password:** password for guest only. Guest can only view the monitoring video.

**Important note: For Security please change the Admin password and set the Gest Password.**

If there is no Admin password, or guest password and admin password are the same one, some one can visit your camera. the Guest can do both monitoring and setting when defense too.

### Light indication:

Indicator light	On	Flicking	Off
Network light	Connected	Connecting	No conn
Alarm light	Alarm	—	No Alarm
Record light	—	Recording	Stop recording
Defense area light	Coding succssful	Coding	Code cleared

## 2. Get the latest version of Samtech App

For properly working and smooth usage, installing the latest version of this APP is mandatory.

**2.1** Samtech APP smartphone Android App is available in GooglePlay store, and IOS App is available in iTune. This App is free to download and usage.

**2.2** You can also download Samtech App from <http://www.sambao.co> It is available for Android, for IOS and also for CMS.

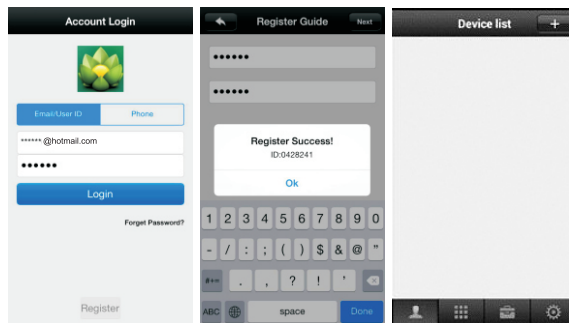
For Windows OS, click CMS. Please follow the instructions to download installation package. Then follow the instructions to complete registration and log in Samtech.

For your own privacy and safety, please do not download/install the App from other sources.

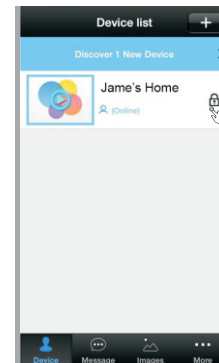


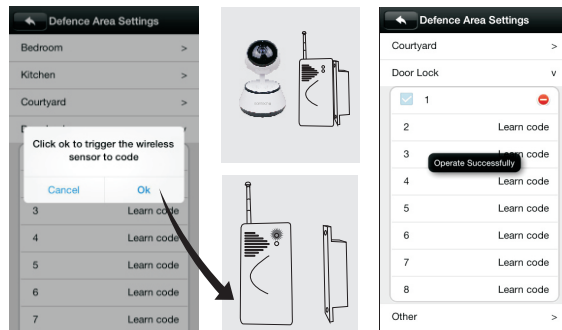
### 3. Registering an account, add a device

The Samtech APP provides second registering methods which are using mobile phone number or using your E-mail address. Go to login page, and click register, then input your email address and password, click "Register", then it's done, you will be navigated to "Device list".

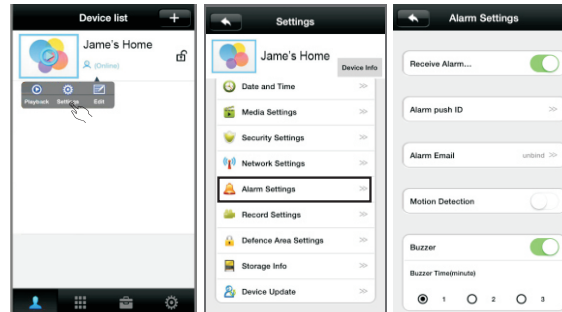


3. In the device list, beside device name, locker is locked means it is under defending. You can open the lock to get rid of defending.





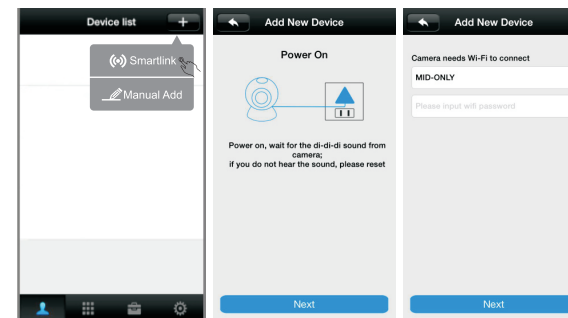
2. In setting, please turn on receiving alarm or bind your email alarm or Buzzer.



#### 4. Adding new device(Samtech IP camera)

##### 4.1 Smartlink

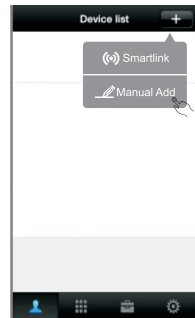
After enter into the "Device List", click "+" button. Then you can add the device by smartlink as below.



**Notes:** connect smartphone with WIFI first and then charge the camera, four lights will be on. After 30s, the camera finishes starting. The camera begins to accept the operation of smartlink when you hear the sound "Di Di Di". Camera can accept smartlink within 5minutes after starting, or it will stop with no more sounds "Di Di Di". If the password of wifi needs to be set again, you should restart the camera. As the case that router is changed WIFI password or the camera transfer to another place, please refers to page 14(reset factory mode) to reset the device.

#### 4.2 Add new device by manual

You can also add the device manually. As below illustration, input your own device name, device ID and device password.(default 123). Click save, now, you have successfully added a new Samtech IP camera to your smartphone APP.

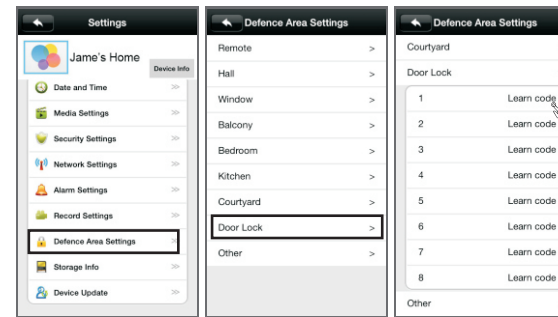


#### 4.3 Add device by Ethernet

Using the Ethernet cable, plug your Samtech IP camera to Router. Running the Samtech APP in your smartphone, then do next step. Most importantly, your smartphone must be connected into same Router, which means both devices (IP cameras and Smartphones or tablets) should in same LAN network. This can ensure the App find the equipment (Samtech IP Camera).

After enter into the "Device list", Waiting several seconds, the App will automatically search for available devices, then list them into your device list. Click "Discover 1 new device", then click "+" button, and input your own device name for example: Jame's home, and device password (default 123), click "Save", now you have successfully added a new Samtech IP camera to your smartphone App.

1. Click "Device name (i.e Jame's home), the camera's menu will pop-up, choosing "Settings", then choosing "Defense Area" in menu list, now you can see there are several names for your selection. These names are zone names, click the position you want to enroll the sensor, for the first piece sensor, click "1", then it will pop-up "Click OK to trigger the wireless sensor to code", here in case of door sensor(wireless sensor), magnet and spring are very close(less than 5 mm). Now you need to turn on your sensor to be ready for enrollment. Click "Ok" on App, at this moment,you need to separate door sensor magnet and spring -by this way, you are triggering your wireless sensor to code.When it shows "Code successfully", it means you have successfully added this sensor to this zone (Samtech IP camera). Note: In defense area list, "Remote control" is on the top of list, it's for enrollment of remote control (or remote keyfob, keychain).

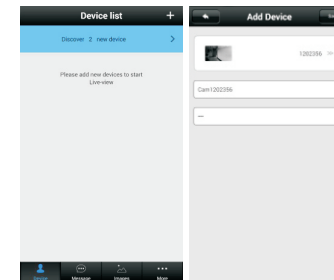
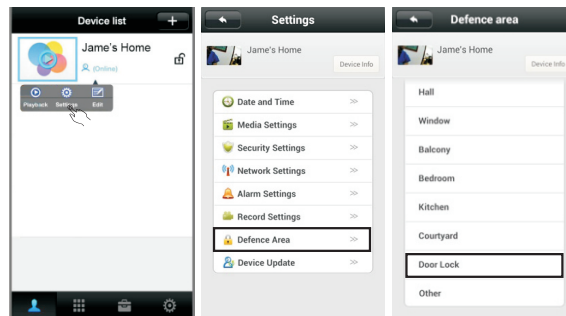


#### Features:

- 1.You can add unlimited IP camera,while monitor at the same time
- 2.You can double click one interface and start recording to your PC.  
(Current video to PC format is av format).

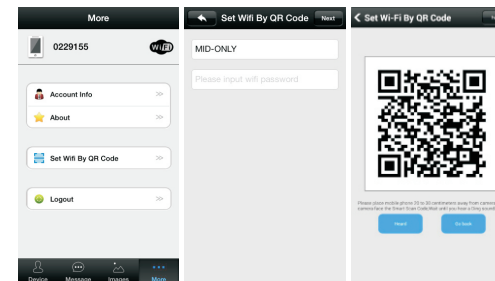
#### 6. How to enroll wireless sensors to Samtech IP camera?

Working with different types of detection sensors is one of main feature for samtech IP camera. The IP camera is working with frequency of 433MHz wireless sensors. Not all wireless sensors are compatible with this camera, making sure get correct sensors before start to use this function.

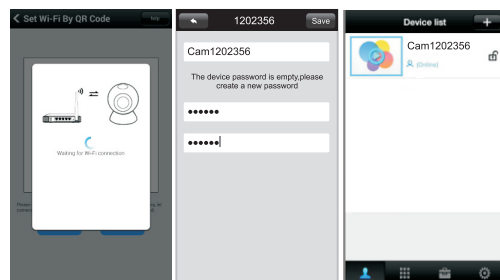


#### 4.4 Set wifi by QR Code

Click More, you can go to set wifi by QR code. As your smartphone or Tablet gets connected to wifi(Router), Samtech IP camera will find the same Router as below illustrations. Please input correct wifi password. Click next, a QR Code will be generated automatically. Please place mobile phone 20-30 cm away from IP camera to let IP camera to scan smartphone or Tablet screen QR code until you hear a Ding sound. As you hear Ding sound,click hear.





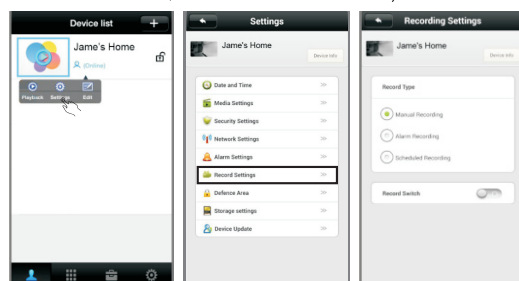


## 5. How to use IP camera

### 5.1 smartphone or Tablet PC monitoring and recording

Click the monitor icon in the device list and then the real-time video can be viewed.

Click "Device name (i.e Jame's home), the camera's menu will pop-up, choosing "Settings", choosing Record Settings, then you can manual recording, alarm recording or scheduled recording. Please note you have to insert Micro SD card(maximum support to 32GB into the IP camera first, then turn on record switch).

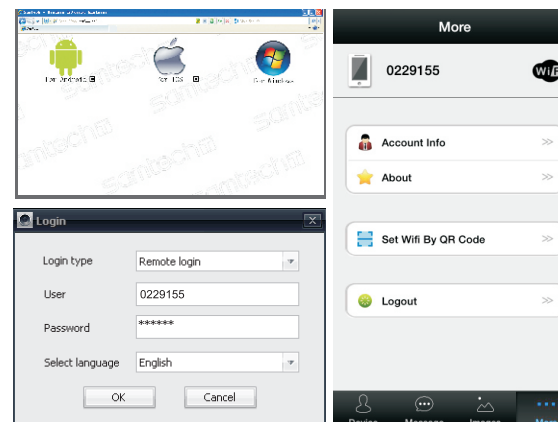


### 5.2 PC (Windows OS) Monitoring and Recording

You can also download samtech App from <http://www.sambao.co>  
It is available for Android, for IOS and also for CMS.

For Windows OS, click CMS. Please follow the instructions to download installation package. Then follow the instructions to log in Samtech.

**Note:** For user information, please go to samtech APP in your smartphone or Tablet. Please go to More, then input user and your password information.



## **FCC Statement**

Changes or modifications not expressly approved by the party responsible for compliance could void the user's authority to operate the equipment.

This equipment has been tested and found to comply with the limits for a Class B digital device, pursuant to Part 15 of the FCC Rules. These limits are designed to provide reasonable protection against harmful interference in a residential installation. This equipment generates uses and can radiate radio frequency energy and, if not installed and used in accordance with the instructions, may cause harmful interference to radio communications. However, there is no guarantee that interference will not occur in a particular installation. If this equipment does cause harmful interference to radio or television reception, which can be determined by turning the equipment off and on, the user is encouraged to try to correct the interference by one or more of the following measures:

- Reorient or relocate the receiving antenna.
- Increase the separation between the equipment and receiver.
- Connect the equipment into an outlet on a circuit different from that to which the receiver is connected.
- Consult the dealer or an experienced radio/TV technician for help

This device complies with part 15 of the FCC rules. Operation is subject to the following two conditions (1) this device may not cause harmful interference, and (2) this device must accept any interference received, including interference that may cause undesired operation

SAR: The device complies with RF specifications when the device used at 20cm from your body.