

Figure 1 Internal component assembly



Figure 2 Backpanel board top side



Figure 3 Internal assembly with UHF antenna visible



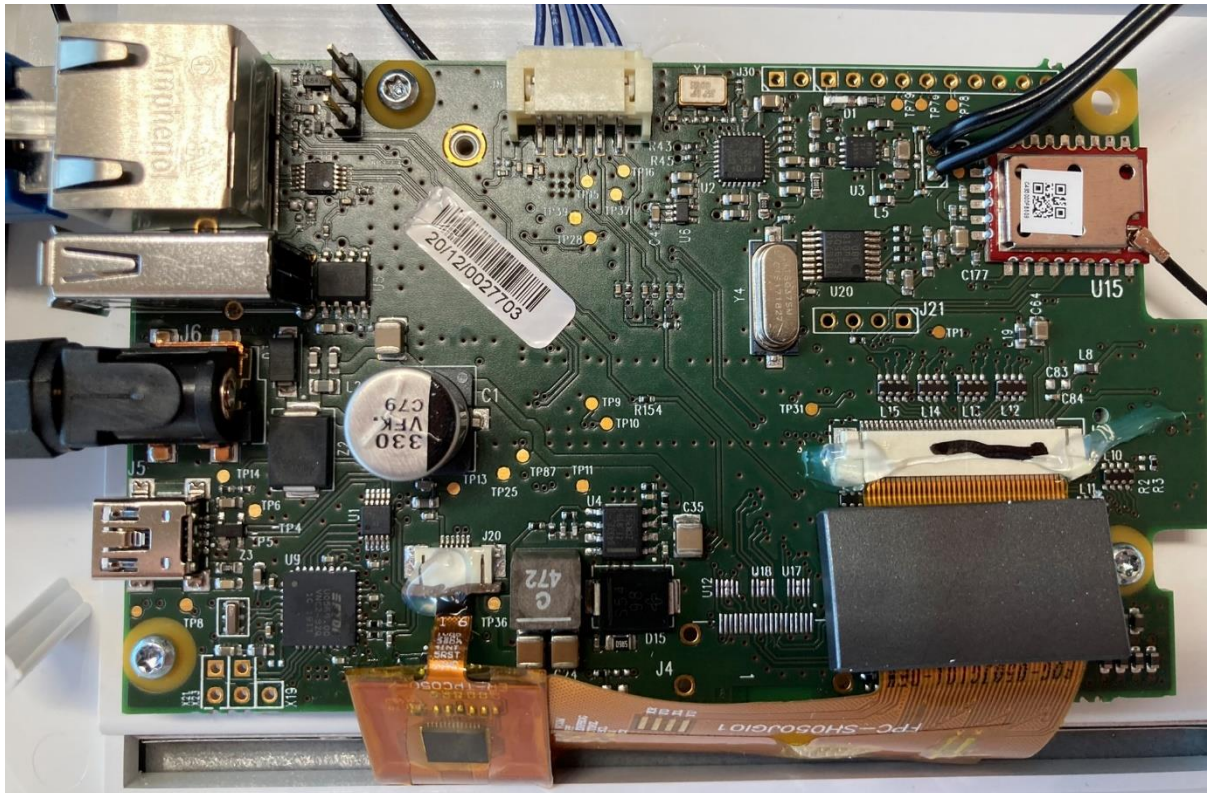


Figure 4 Motherboard bottom side

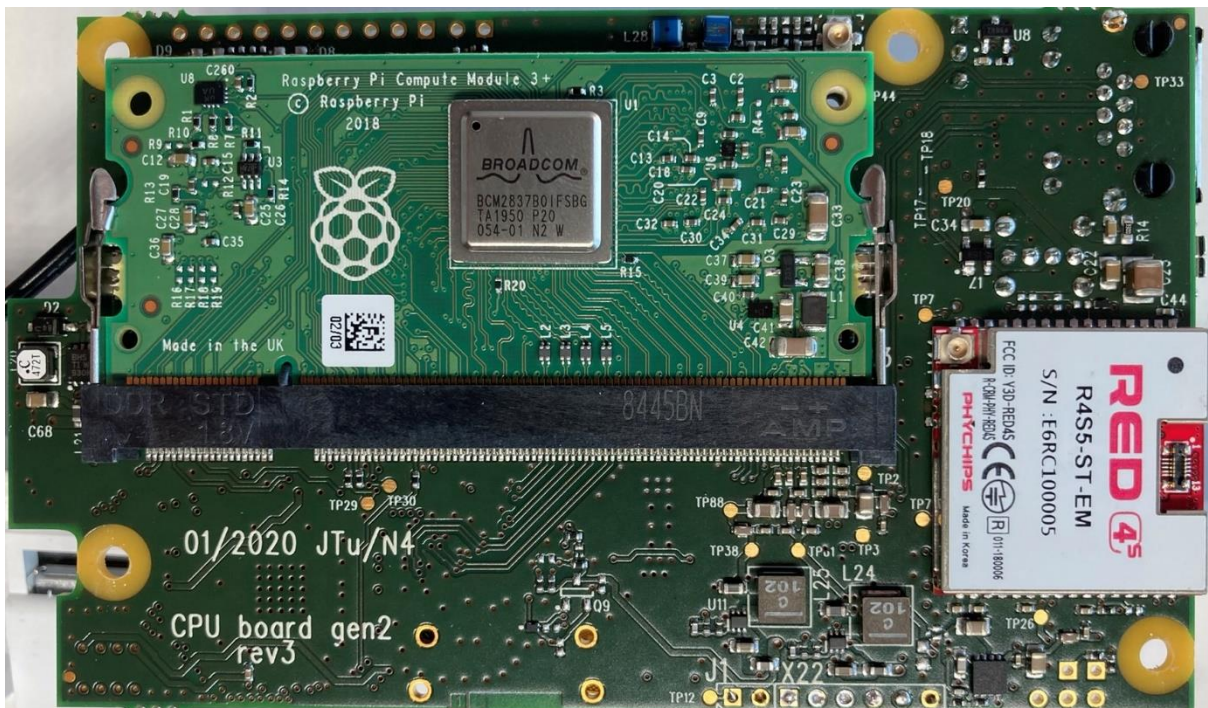


Figure 5 Motherboard top side



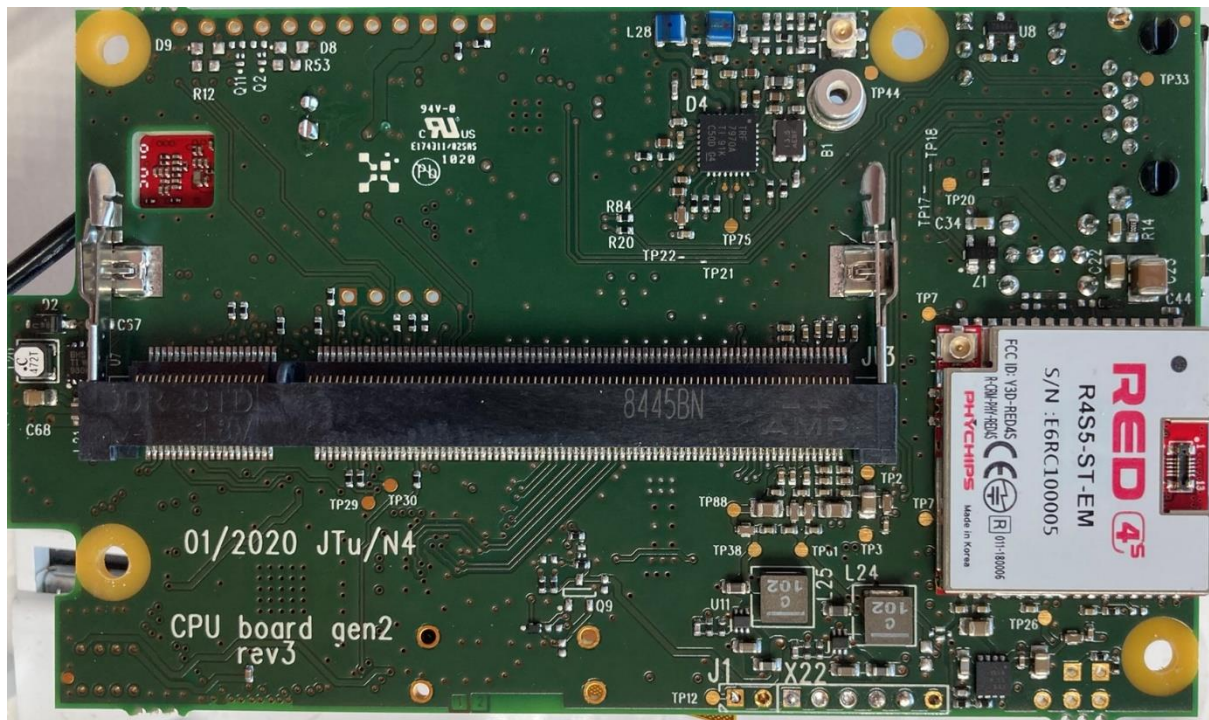


Figure 6 Motherboard top side with removed Raspberry Pi CM



Figure 7 Raspberry Pi CM top



Figure 8 Raspberry Pi CM bottom