

Applicant	:	Zhuhai Rocateq Technology Company Ltd D,3rd Floor 1# Factory 8, Chuang Xin Liu Road, Xiangzhou District, Zhuhai, Guangdong, 519085, P.R. China
Manufacturer	:	Zhuhai Rocateq Technology Company Ltd D,3rd Floor 1# Factory 8, Chuang Xin Liu Road, Xiangzhou District, Zhuhai, Guangdong, 519085, P.R. China
Trade Mark	:	Rocateq
EUT	:	Transmitter wireless 2.4GHz
M/N	:	Transmitter wireless 2.4GHz

FCC and ISED Statement:

This equipment has been tested and found to comply with the limits for a Class B digital device, pursuant to part 15 of the FCC Rules. These limits are designed to provide reasonable protection against harmful interference in a residential installation. This equipment generates, uses and can radiate radio frequency energy and, if not installed and used in accordance with the instructions, may cause harmful interference to radio communications. However, there is no guarantee that interference will not occur in a particular installation. If this equipment does cause harmful interference to radio or television reception, which can be determined by turning the equipment off and on, the user is encouraged to try to correct the interference by one or more of the following measures:

- Reorient or relocate the receiving antenna.
- Increase the separation between the equipment and receiver.
- Connect the equipment into an outlet on a circuit different from that to which the receiver is connected.
- Consult the dealer or an experienced radio/TV technician for help.

Caution: Any changes or modifications to this device not explicitly approved by manufacturer could void your authority to operate this equipment.

Notice: This device complies with Part 15 of the FCC Rules and with Industry Canada licence-exempt RSS standard(s).

Operation is subject to the following two conditions:

- (1) this device may not cause harmful interference, and
- (2) this device must accept any interference received, including interference that may cause undesired operation.

Le présent appareil est conforme aux CNR d'Industrie Canada applicables aux appareils radio exempts de licence. L'exploitation est autorisée aux deux conditions suivantes:

- (1) l'appareil ne doit pas produire de brouillage, et
- (2) l'appareil doit accepter tout brouillage radioélectrique subi, même si le brouillage est susceptible d'en compromettre le fonctionnement.

Radiation Exposure Statement

This equipment complies with FCC/ISED RF radiation exposure limits set forth for an uncontrolled environment. This equipment should be installed and operated with a minimum distance of 20 centimeters between the radiator and your body.

1. Subject Matter Scope

This standard specifies the Rocateq's production of Wireless 2.4 GHz transmitter, technical requirements, test methods, inspection rules, marking, packaging and storage.

2. Reference Standard

ANSI/ASQZ1.4-2003 each inspection sampling and sample forms (for continuous batch of checks)

3. Terminology and code

3.1. The B signal (2.4 GHz) emitted by Wireless 2.4 GHz transmitter makes the relevant shopping cart casters unlock after receiving A signal (8.13KHz) again.

4.Shell size (Fig. 1) (Unit: mm)

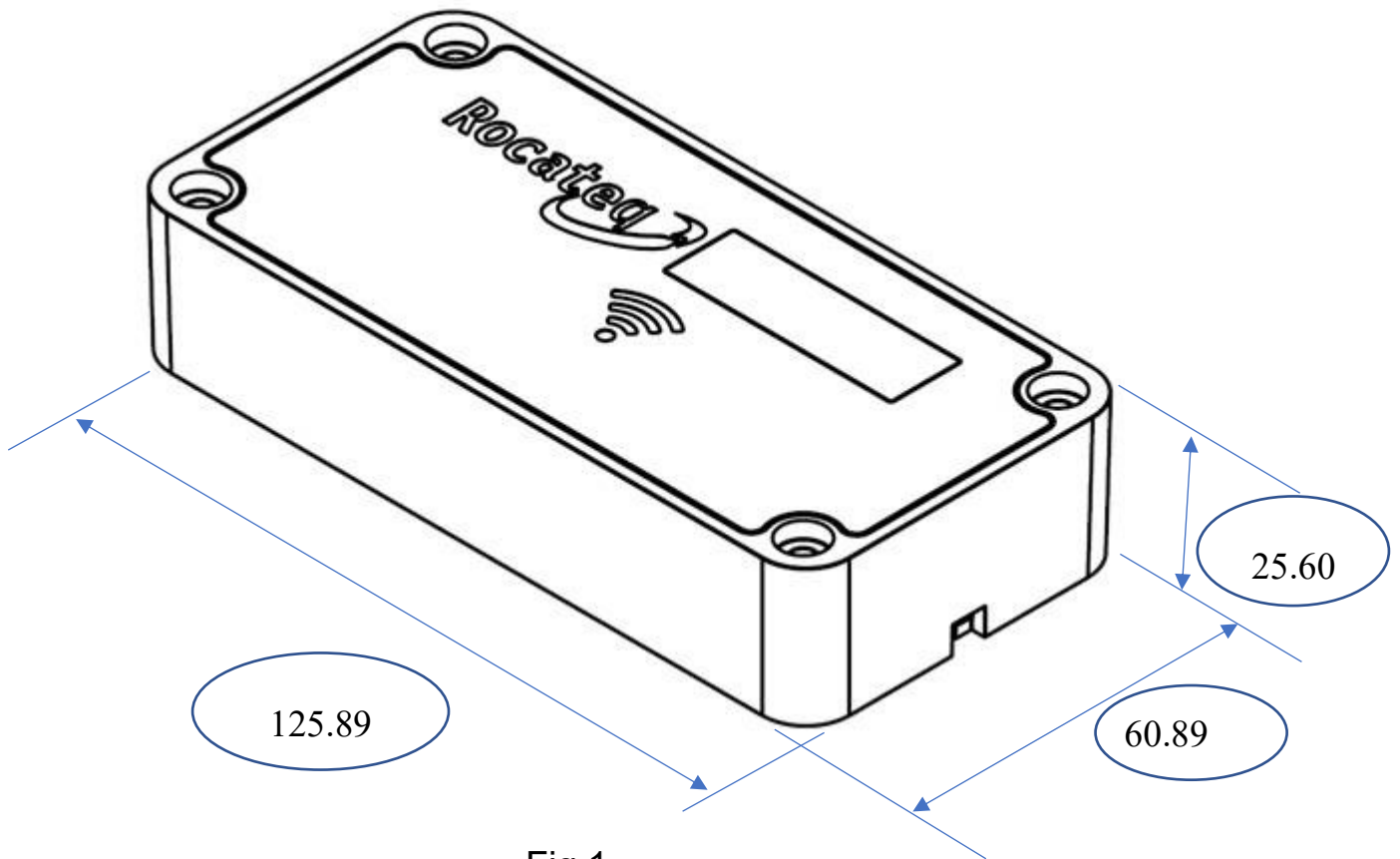


Fig.1

5. Electrical Performance and Testing

Electrical Performance of Wireless 2.4 GHz Transmitter

No.	ITEM	Parameters			Others
		normal temperature	Environmental Testing -20 ~ 60°C	Over/Low voltage test	
1	Voltage	5V + 10%	5V + 10%	5V + 10%	
2	Transmitting distance (level4)	≥2m	+ 10%	+ 10%	
3	Transmitting frequency	2.4GHz			

5.4.1 The ambient temperature ranges from - 20 C to 60 C.

5.4.2 Operating voltage: 5V + 10%;

Specification of adapter: input: AC100-240V, output: DC5V, 1000mA

5.4.3 Accessories: ammeter, DC power supply, adapter, remote control, test casters, OCS RFID casters and Wireless B signal meter

5.4.4 Test methods:

1.Current test: DC power supply is adjusted to 5V, wireless 2.4 GHz transmitter is connected with ammeter in series, power is adjusted from 1 to P (10) by remote control, input current is less than 300 mA.

2. Transmitting distance test:

2.1.Power-on and debugging: The adapter connects 220VAC, the output connects to Wireless 2.4 GHz transmitter, the power is adjusted to level 4 with remote control, the delay is adjusted to 0 seconds, horizontal on the ground, the digital tube is displayed, and the wireless side is in front of the test.

2.2. Testing special caster to measure distance: pushing the shopping cart when the caster is unlocked, pushing the cart several times (unlocking, unlocking continues), maximum unlocking distance $\geq 2m$.

2.3. Wireless B signal meter test distance: Hold the wireless B signal meter as high as Wireless 2.4 GHz transmitter, move forward and backward, the maximum receiving distance is more than 2 m.

3. OCS RFID Caster Test Delay: When the caster is unlocked, it receives an A signal and receives a wireless signal (B signal) emitted by Wireless 2.4 GHz transmitter after 30 seconds. The receiving time is more than 0 seconds (delay), and then receives an A signal. The caster is unlocked. In this test, the wireless 2.4 GHz transmitter is set with a remote controller to delay 3 seconds, 5 seconds, 10 seconds, 20 seconds, 30 seconds and 60 seconds. In the second test, when the receiving time is greater than or equal to the delay time, the casters are not locked, and when the receiving time is less than the delay time, the casters are locked.

4. 24-hour reset button test: 24 hours after the start of Wireless 2.4 GHz transmitter, the remote control and the buttons on the board can not be set, and the reset button can only be set after pressing the reset button.

6. Inspection Rules

6.1.1 Exit Inspection Contents See 6.1-6.4

6.1.2 Exit inspection shall be carried out batch by batch according to ANSI/ASQZ1.4-2003.

5.2 type inspection

6.2.1 When wireless 2.4 GHz transmitter has one of the following conditions, it should be type checked:

A. Trial-formulation type identification of new or old products transferred to factories;

B. When the design, process and material of the product have changed significantly;

C. When production is suspended for more than eight months and put into operation again;

D. Normally continuous production of products, once a year;

E. When the State Quality Supervision Authority puts forward the requirements for type inspection.

6.2.2 When any item of Wireless 2.4 GHz transmitter in type inspection is not qualified, double sampling should be taken from the same batch of products and the unqualified items should be re-examined. If any item in the reexamination is not qualified, the batch of products will not be qualified. Unqualified products shall be re-submitted for testing after improvement or repairs.

6.3 Check before acceptance

The orderer accepts the products according to the ex-factory inspection items. In case of quality disputes, both the supplier and the demander review the products according to the supply agreement.

7. Marking, packaging and storage

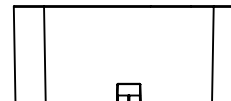
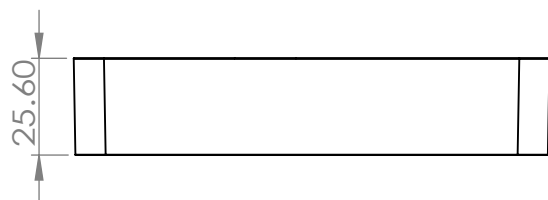
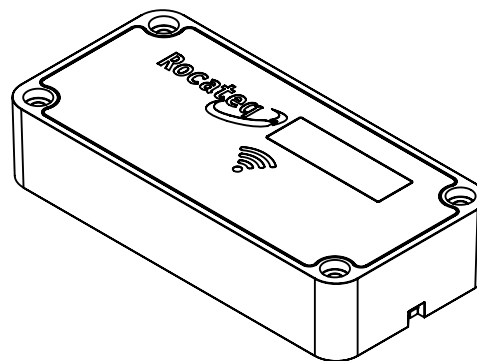
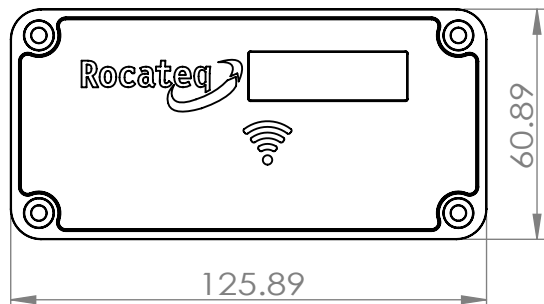
7.1 Marks, which should include trademarks

7.2 Packing

Battery switches should be properly packed for each factory

7.3 Keep in storage

Wireless 2.4 GHz transmitter (including the packed wireless 2.4 GHz transmitter) should be stored in a well ventilated warehouse with a relative humidity not exceeding 80% and no corrosive gas for 12 months.



PROPRIETARY AND CONFIDENTIAL
THE INFORMATION CONTAINED IN THIS
DRAWING IS THE SOLE PROPERTY OF
Zhuhai Rocateq Technology Co., LTD.
ANY REPRODUCTION IN PART OR AS A
WHOLE WITHOUT THE WRITTEN PERMISSION
OF Zhuhai Rocateq Technology Co., LTD
IS PROHIBITED.

		DIMENSIONS ARE IN MM		NAME		DATE	
		TOLERANCES:		DRAWN		Sean Du	
		FRACTIONAL ±		CHECKED			
		ANGULAR: MACH ± BEND ±		ENG APPR.			
		TWO PLACE DECIMAL ±		MFG APPR.			
		THREE PLACE DECIMAL ±		Q.A.			
		MATERIAL		COMMENTS:			
		FINISH					
NEXT ASSY		USED ON					
APPLICATION		DO NOT SCALE DRAWING					

Zhuhai Rocateq Technology Co., LTD

SIZE **A** DWG. NO. **Wireless B Housing** REV.

SCALE: 1:2 WEIGHT: SHEET 1 OF 1