

Panoramic Photography Start Now ➤

SCHEN

User Manual

Cautions



When cleaning the product, do not spray water onto the product to prevent water from getting inside, which could cause malfunction.



Prevent it from dropping from high places, which could damage key sensors and impact its accuracy.



The data transmitting between the product and the APP in your MP is based on Bluetooth 4.0. Please turn the bluetooth on and make sure your MP is one of the supported models.

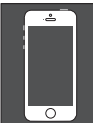


FCC Caution: Any changes or modifications not expressly approved could void the user's interest of using the device.

Products Accessories :

MP holder×1. Tripod×1
Turntable×1. USB cable ×1 User manual×1

Supported Systems



iOS
iOS8.0 or above



Android
4.3--6.0

The supported system list as showed above was updated as of Dec. 2015. Please go to www.aipp3d.com and check the latest one.

The APP can be used on your phone on below two conditions:

1. The phone hardware supports bluetooth 4.0;
2. It must be based on iOS8.0 or above, or Android 4.3 to 6.0.

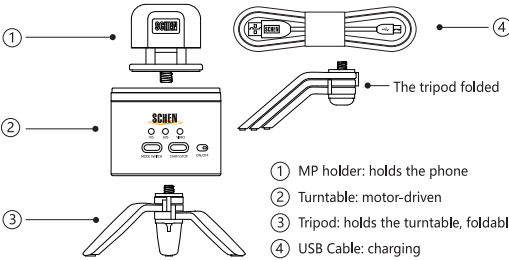
If your phone meets these two requirements, but still can't use the product, please contact us for immediate test.

Structure

①

②

③



① MP holder: holds the phone

② Turntable: motor-driven

③ Tripod: holds the turntable, foldable

④ USB Cable: charging

FCC Statement

This equipment has been tested and found to comply with the limits for a Class B digital device, pursuant to Part 15 of the FCC Rules. These limits are designed to provide reasonable protection against harmful interference in a residential installation. This equipment generates uses and can radiate radio frequency energy and, if not installed and used in accordance with the instructions, may cause harmful interference to radio communications. However, there is no guarantee that interference will not occur in a particular installation.

If this equipment does cause harmful interference to radio or television reception, which can be determined by turning the equipment off and on, the user is encouraged to try to correct the interference by one or more of the following measures:

- Reorient or relocate the receiving antenna.
- Increase the separation between the equipment and receiver.
- Connect the equipment into an outlet on a circuit different from that to which the receiver is connected.
- Consult the dealer or an experienced radio/TV technician for help

Once your product is not functioning well, please call SCHEN at :400-086-9000 (Service Hotline)

Thank you so much for choosing PaiPai360. In order to get the best after-sale service, please keep this warranty card safe.

1. One year guarantee.
2. And the guaranteed service can only be provided by show of the purchasing proof (such as online transaction record/invoice/order No.)
3. The following cases are not up to guarantee.
 - 3.1 Products bought from online mall or dealers who are not authorized by SCHEN.
 - 3.2 Damage caused by disassembling or modifications done without authorization
 - 3.3 Damage and malfunction caused by dropping while handling
 - 3.4 Damage or malfunction caused by improper operation or not following instructions
 - 3.5 Damage or malfunction due to improper maintenance or storage
 - 3.6 Products that have been repaired by maintenance stations that are not authorized by SCHEN.

User Info. (Fill in all blanks before mailing)

Name: _____ Contact: _____

Address : _____

Issue Description (Fill in all blanks before mailing)

FCC Statement

Changes or modifications not expressly approved by the party responsible for compliance could void the user's authority to operate the equipment.

This device complies with part 15 of the FCC rules. Operation is subject to the following two conditions (1) this device may not cause harmful interference, and (2) this device must accept any interference received, including interference that may cause undesired operation

Quick-Start Guide

1. Download 360 APP

Please check the supported system list before downloading the APP



Method 1 :
QR code download



iOS Android
Use your phone to scan the QR code on the bottom of the turntable.

Method 2 :
Web download



Type in the URL above into your internet browser, find the APP on the official webpage and download it there directly.

Method 3 :
Search download



Search and download paipa360 at Apple App Store or Android app store. Recommended Android App Store: 360 MP assistant/MI store/Android store

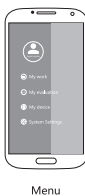
Quick-Start Guide

2. Open and Sync the APP

Open the APP on your MP. Go to "My Device" and do bluetooth search. Link the MP to the turntable.



APP Home



Menu



Bluetooth Search



Load Capacity:500g

Installation Guide

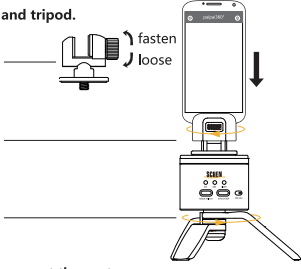
3. Assemble MP holder, turntable and tripod.

3.1, Fasten the MP:
Fasten or loose along corresponding arrows, as shown in the graphic

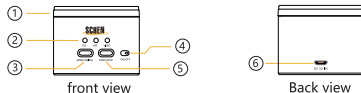
3.2, Fix the MP holder:
Tighten along the arrow, as shown in the graphic

3.3 Fix the tripod:
Tighten along the arrow, as shown in the graphic.

Note: Just use force enough to connect the parts. Don't overdo it.



4.Function guide



- ① 360 degree motor-driven turntable
- ② 10s/60s/recording indicator : Lights showing the corresponding modes that are on
- ③ Mode switch button: Press it to switch between 10 s / 60 s/video
- ④ On/off: power switch for the turntable
- ⑤ Start/Stop
- ⑥ DC 5V Charge Port

5. Turntable charging guide:

Please use the USB cable to charge for the turntable (on PC, portable battery, MP), which takes about 1.5h.(The red light at the top turns on when it is charging and off when the charging is done.)



Standard USB connector Micro-USB connector

SCHEN

Warranty card