



3R SHOW FC-30M

User Manual

Cautions: Please read below important safety information.

For your better use, Please read all the information before the first time you install and use. Damage or malfunction caused by improper operation, not following instruction or improper operation caused by misunderstanding. Schen will not be liable for any damage caused by misuse.

For your better use, Please follow and keep all the information attached. All the content of the instruction will not change any purchasing agreement or terms of the statement Schen ensured. The products from Schen were safety, environmental and effective. Also have pass some Professional certification such as FCC、CCC、CE、RoHS ect.

3R SHOW contains electrical equipment, the power cable and other functional parts will cause some potential safety hazards or personal hurt and property damage. Even when improper operation. In order to reduce these risks, Please follow all the information and cautions mentioned in our instruction so that avoid some risks and build a safe working environment for 3R SHOW.

1.Please do Regular inspection for the product, if occurs below situations, please stop using and call Schen service hotline: 400-086-9000 or contact with our dealer and request the maintain method.

- 1.1Burst, fracture or damage of Power cable line、Socket、Power ;
- 1.2Overheat、Smog、spark or fire indication;
- 1.3Products are split up or has a strong smell;
- 1.4Liquid splashing into the product or power cable line;
- 1.5Damage and malfunction caused by dropping;
- 1.6Malfunction when operation by following instructions.

2. Do not disassemble and maintain by yourself. When malfunction caused by improper operation, please send to maintenance stations that are authorized by SCHEN.

3.Plug and Socket

- 3.1 Damage or Corrosion phenomena of the socket, please ask professional electrical personnel for change;
- 3.2 Do not bend or change the plug, if damage for the plug, please contact with manufacturer or dealer for get the replacement parts;
- 3.3 For safety, Attached three core plug is only applicable to earthed power outlet.
- 3.4 Do not make the power outlet overloaded. The total system load should not over 80% of the branch circuit rated value. Please contact with professional electrical personnel for further information, if any questions about the power outlet overloaded or branch circuit rated value.

3.5 Make sure the power outlet can offer suitable voltage and current for the product you need to install.

4.Maintain and clean

- 4.1 Do not leave the product in direct sunlight or expose to high temperatures. Otherwise may cause malfunction.
- 4.2 Please keep the product in dry, do not operate with wet hands, otherwise may cause fire or electric shock.
- 4.3 Switch off before clean the product, and please keep the surface of the product clean also keep the work area clear and tidy.

FCC Statement

This equipment has been tested and found to comply with the limits for a Class B digital device, pursuant to Part 15 of the FCC Rules. These limits are designed to provide reasonable protection against harmful interference in a residential installation. This equipment generates uses and can radiate radio frequency energy and, if not installed and used in accordance with the instructions, may cause harmful interference to radio communications. However, there is no guarantee that interference will not occur in a particular installation. If this equipment does cause harmful interference to radio or television reception, which can be determined by turning the equipment off and on, the user is encouraged to try to correct the interference by one or more of the following measures:

- Reorient or relocate the receiving antenna.
 - Increase the separation between the equipment and receiver.
 - Connect the equipment into an outlet on a circuit different from that to which the receiver is connected.
 - Consult the dealer or an experienced radio/TV technician for help
- Changes or modifications not expressly approved by the party responsible for compliance could void the user's authority to operate the equipment.

This device complies with part 15 of the FCC rules. Operation is subject to the following two conditions

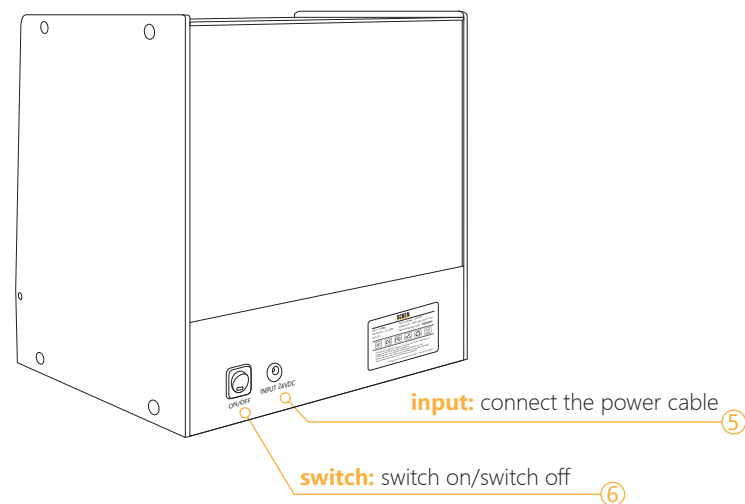
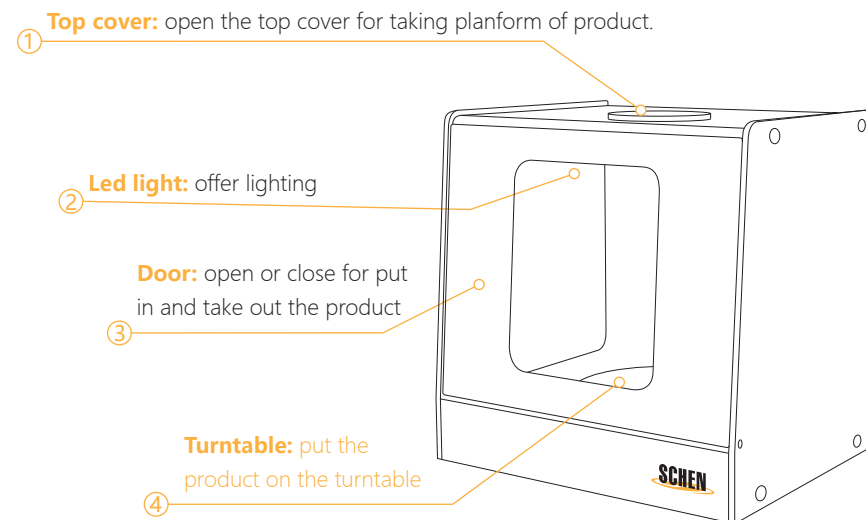
- (1) this device may not cause harmful interference, and
- (2) this device must accept any interference received, including interference that may cause undesired operation

Changes or modifications not expressly approved by the party responsible for compliance could void the user's authority to operate the equipment.

Using guide

Content	1
Product introduction	2
01 function introduction	2
Production installation	3
01 Tripod installation	3
02 Connect for Photography	3
Product Parameter and list	3
01 Product Parameter	4
02 package information	4

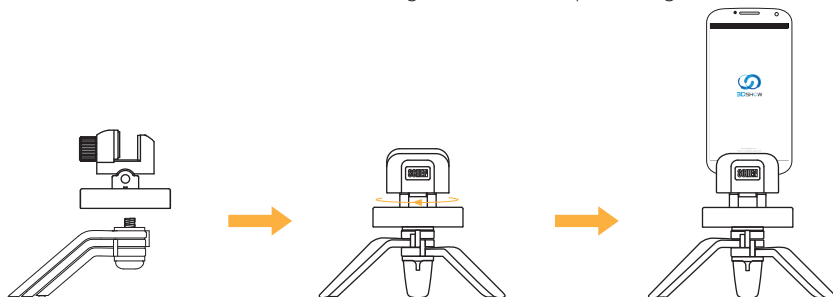
01、Function introduction



01、01 Tripod installation

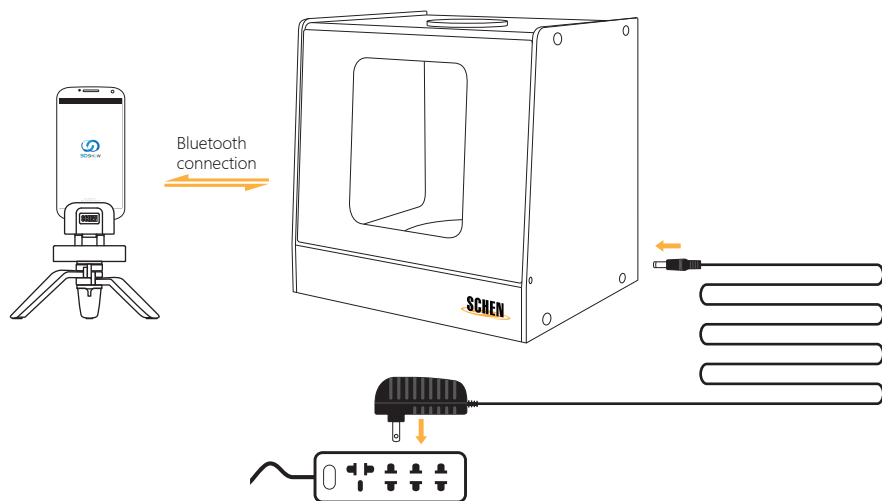
- Unfold the tripod;
- Connect the tripod with MP holder;
- Fasten the MP holder for inserting the MP, then screw the knob for fixed.

Remark: Do not overexert when fixing the MP. Screw up is enough.



02、Connect for Photography

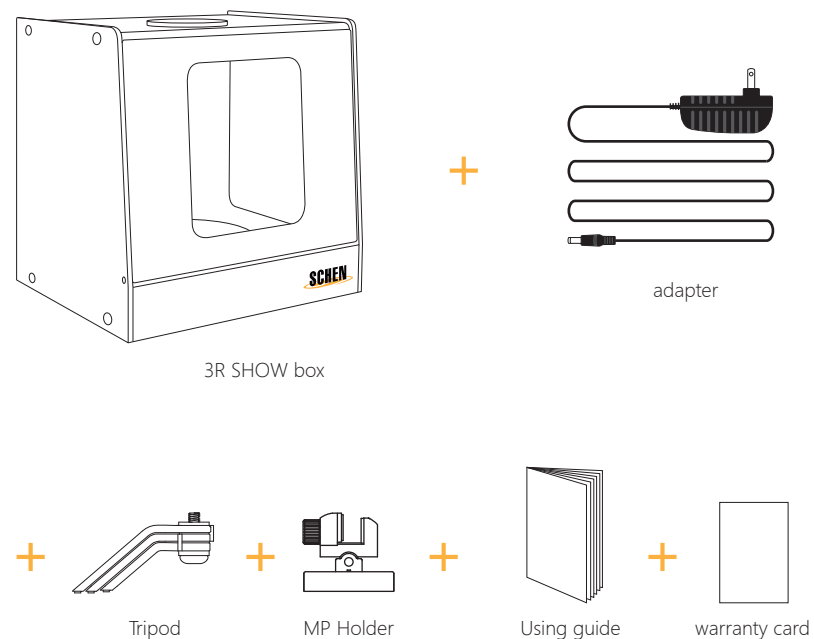
- Connect the power cable, and switch on;
- Put the product you want to shoot into 3R SHOW;
- Open the 3R SHOW APP, open Bluetooth for connecting with 3R SHOW
- Adjust the MP in suitable place for photography



01、Product Parameter

Product Name	3R SHOW	Input	24V / 1A
Model	FC-30M	Capacity	13W MAX
Specification	300×250×308mm	Color rendering index	Ra80
Shooting specification	120×120×150mm	Color temperature	5400K
Weight	2.4KG	Luminous flux	800LM
Max capacity	1KG		

02、Package information



* For upgrade, attached information is for your reference only and they may not reflect the actual products. Our products are subject to change without prior notice.