

Internal photos

Photo 1



Photo 2

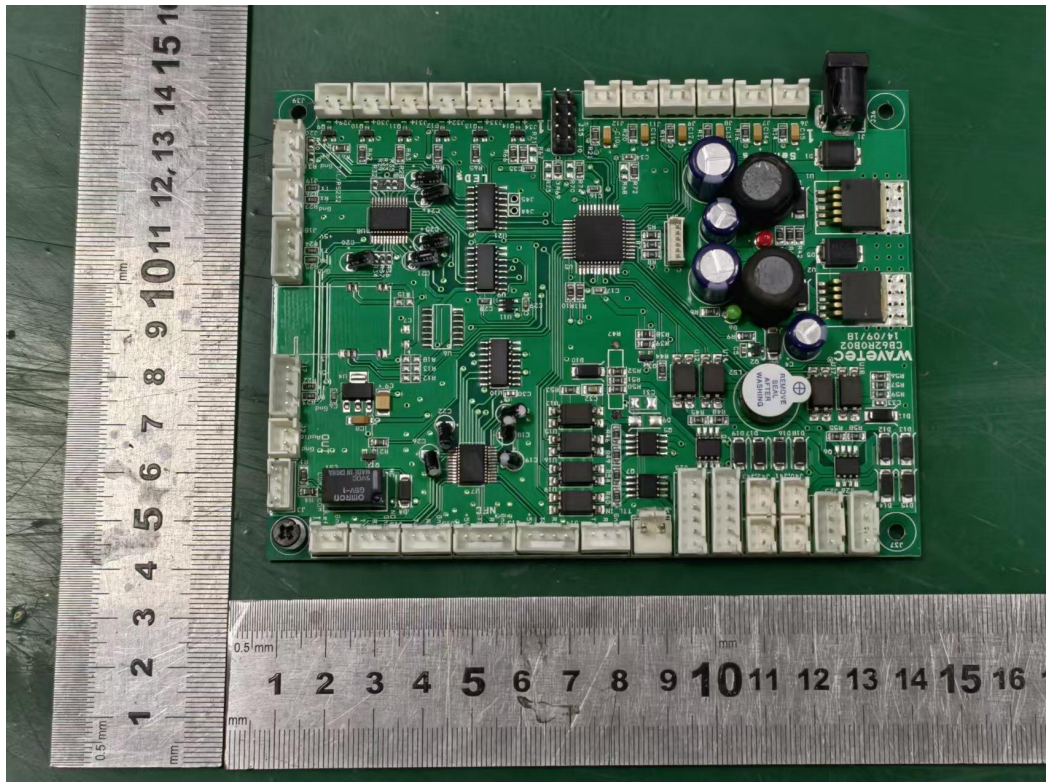


Photo 3

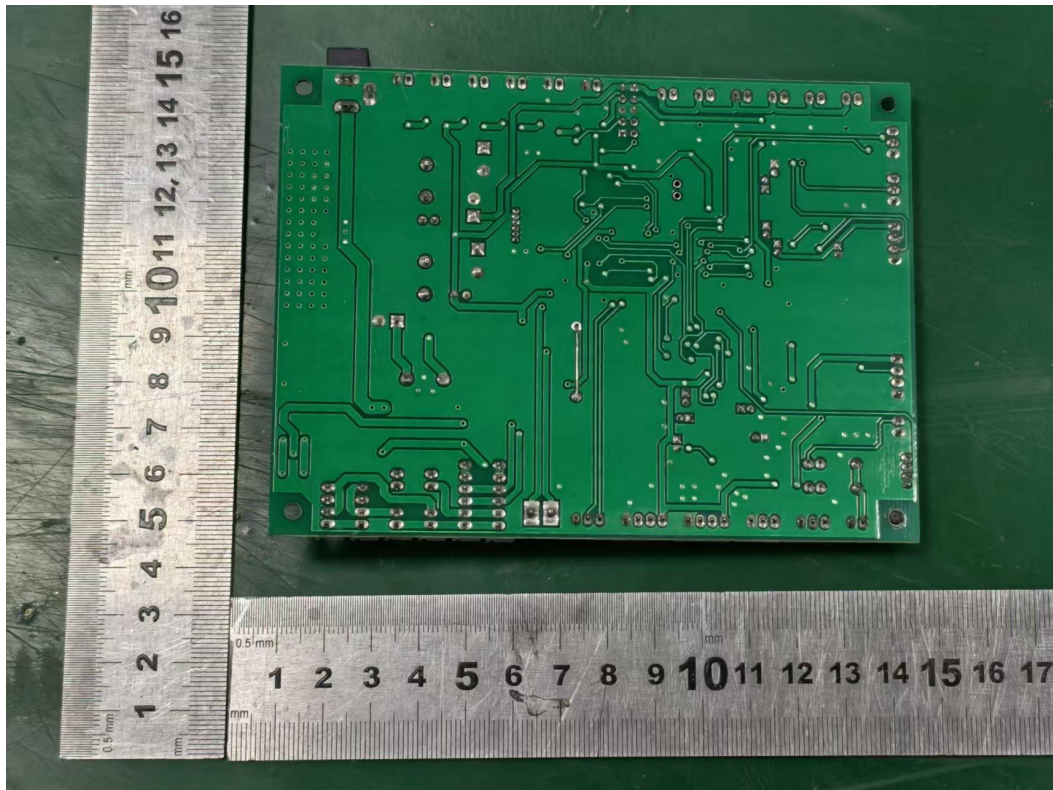


Photo 4

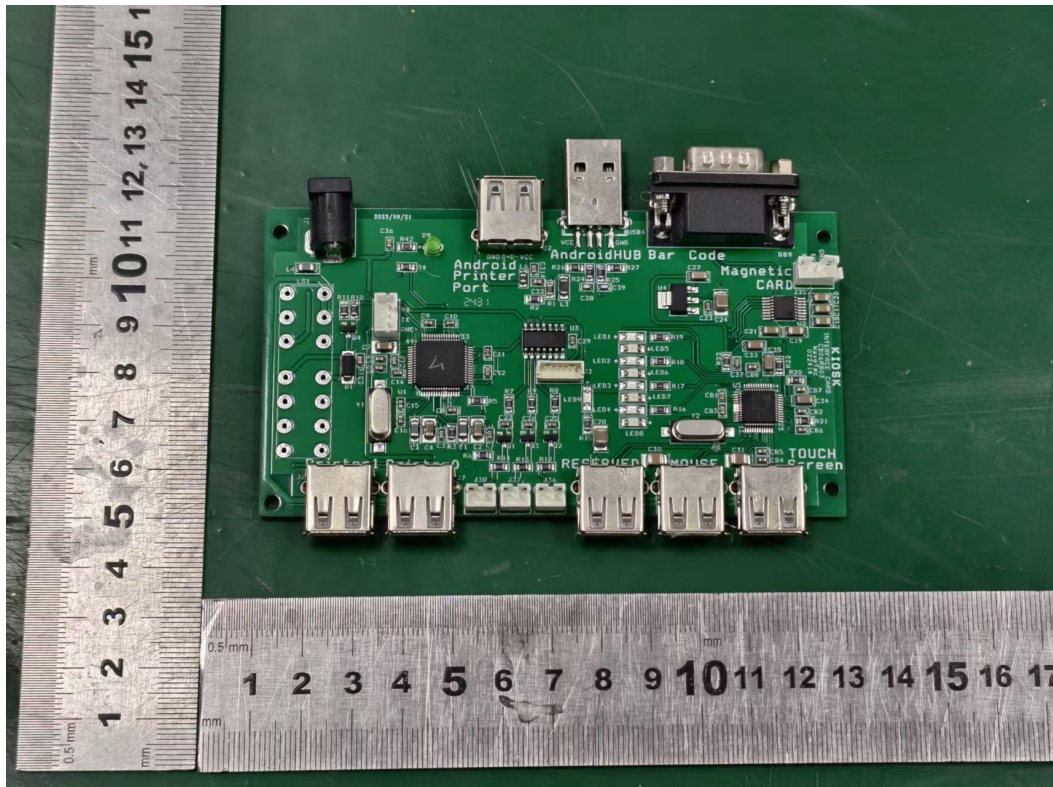


Photo 5

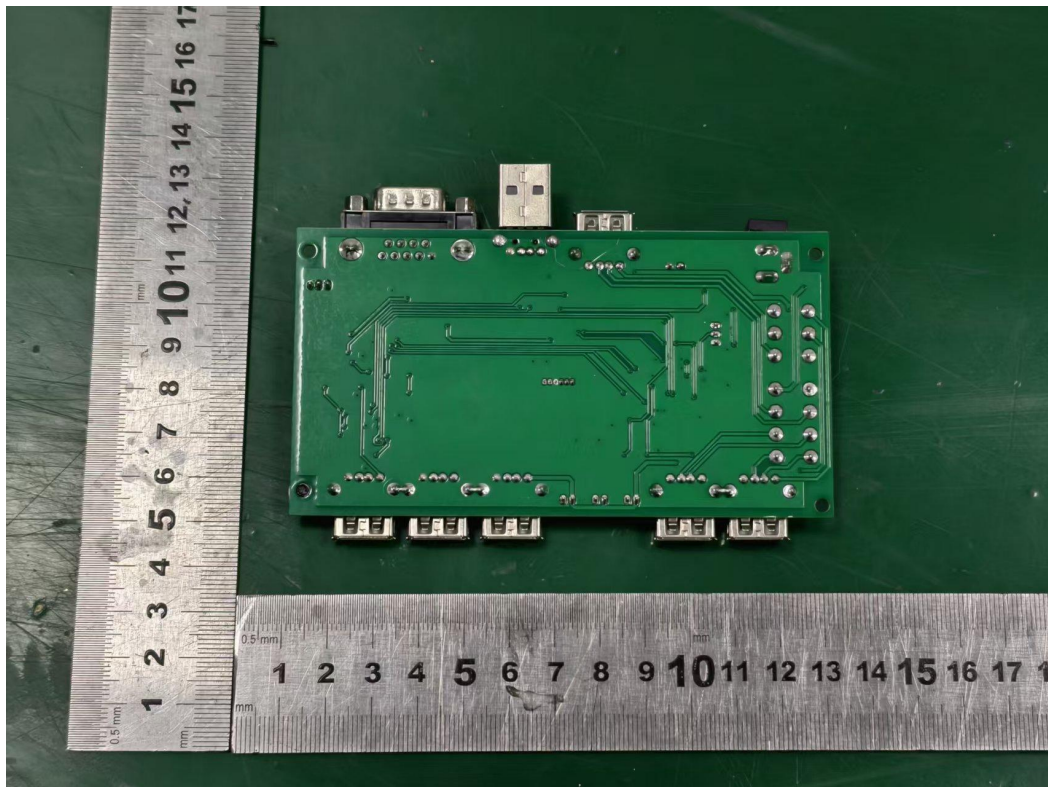


Photo 6

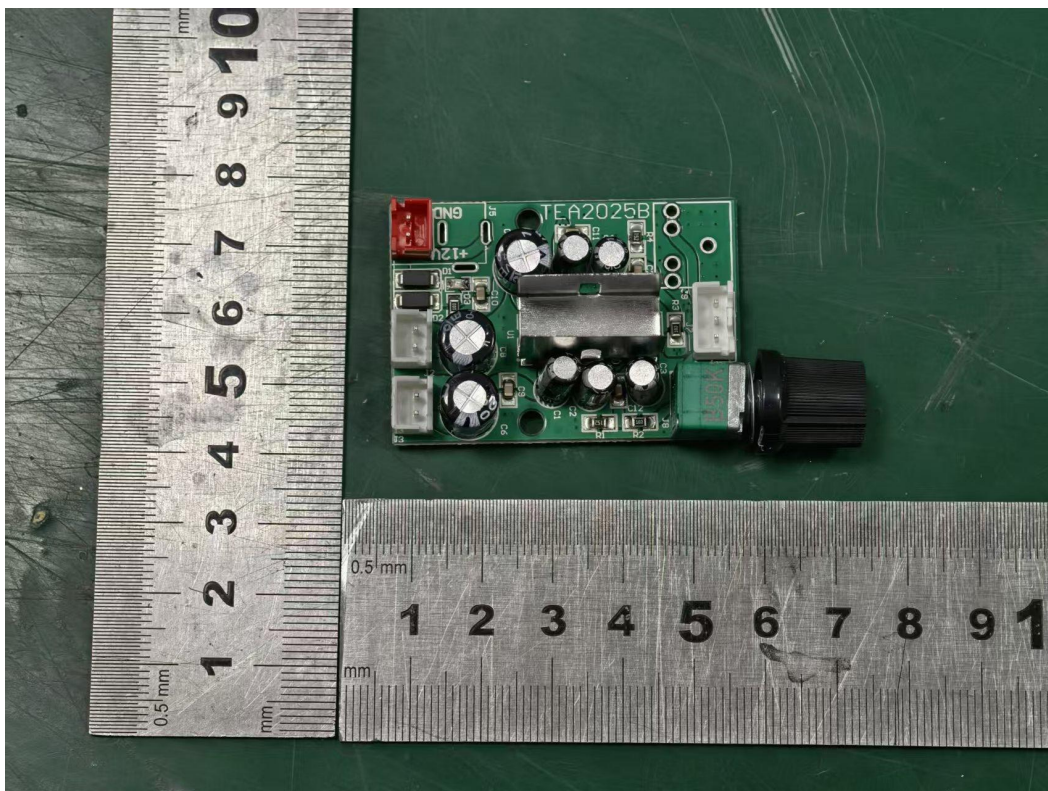


Photo 7

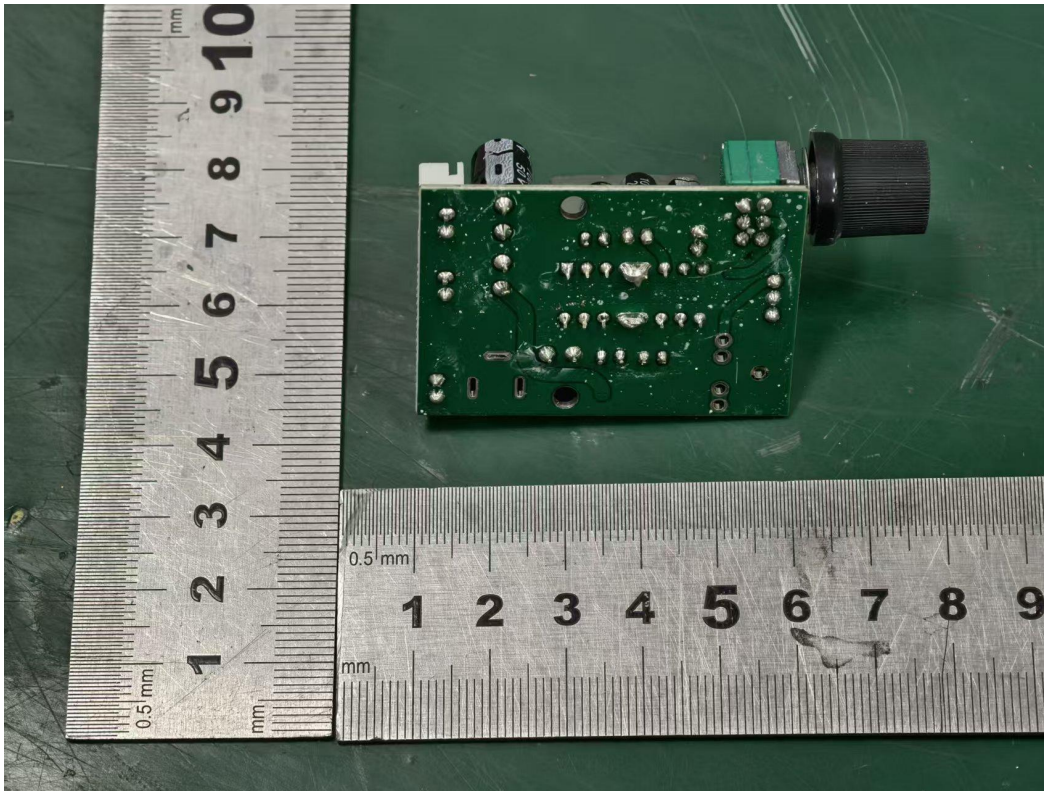
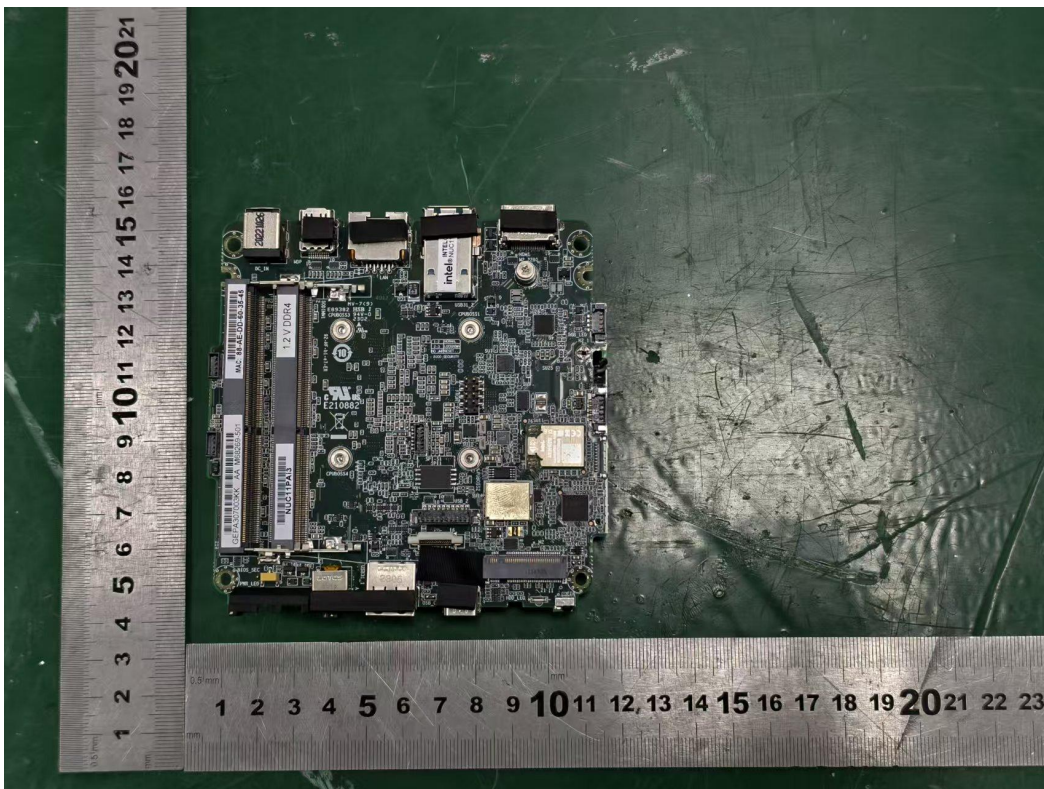


Photo 8



A photograph of a Raspberry Pi 1 Model B+ board lying on a blue textured surface. A black USB Type-C to USB-A adapter is connected to the board's USB-C port. The adapter has a USB-A plug at the other end. A ruler is placed vertically to the left of the board, showing measurements in inches and centimeters. Two red lines are drawn on the image: one connects the USB-C port on the board to the adapter, and the other connects the USB-A plug of the adapter to the text 'USB-A' in the adjacent paragraph.

WIFI2.4G/BEL

Photo 11

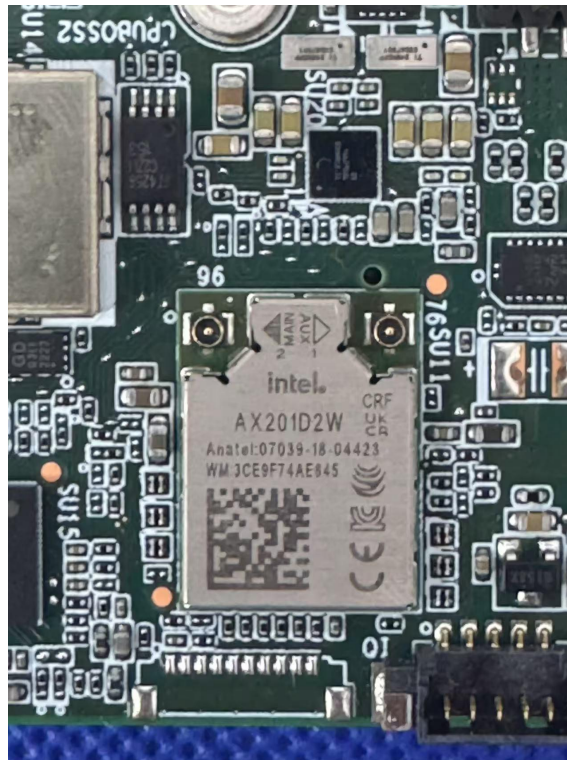


Photo 12

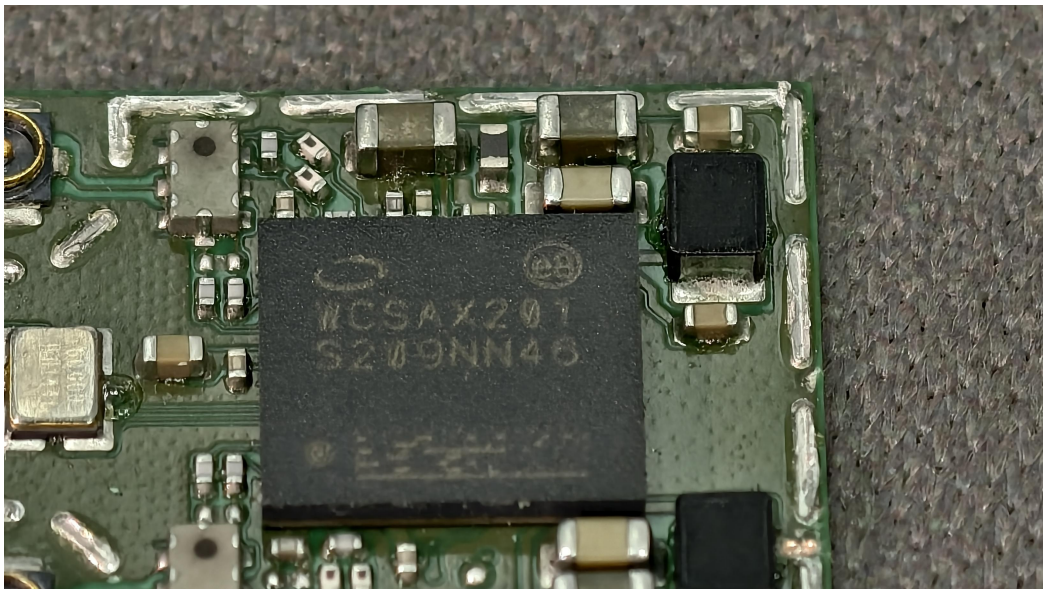


Photo 13

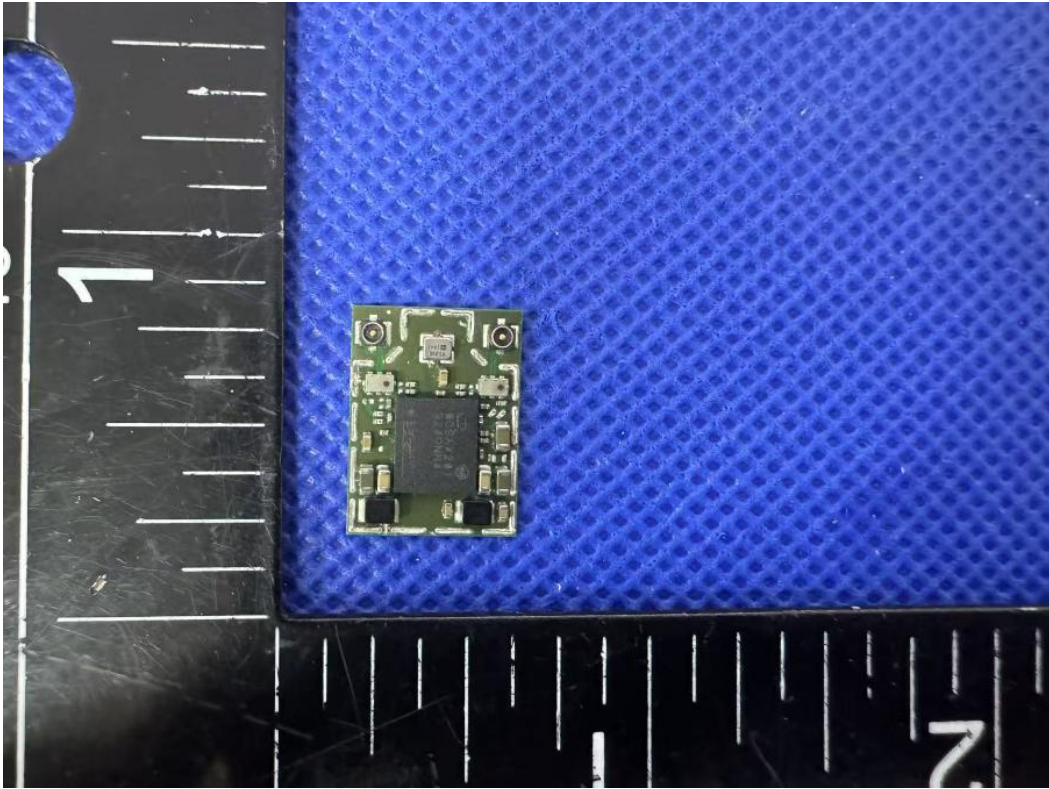


Photo 14

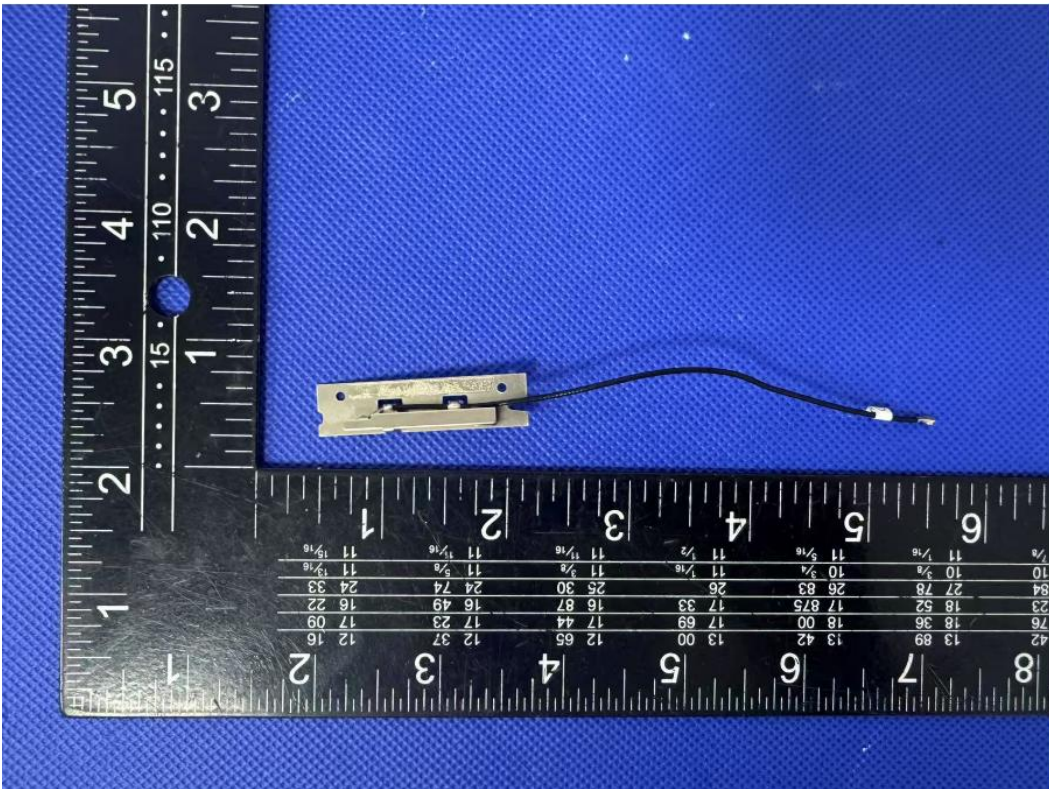


Photo 15

