

Package Contents

setscrew suit × 1

Camera × 1

waveeanty card × 1

mounting bracket × 1

quick start manual × 1

Power adapter × 1

01

Physical Description

day & night auto switch

IR LEDs

5X optical zoom

built-in microphone

motion detection

horizontal PTZ

vertical PTZ

loudspeaker

TF card slot

power port

working indicator

power button

02

Hardware Connection

Connect the power supply, and then the working indicator and the IR LEDs will light up. After 12 seconds, the camera will perform self-test action that begins with pan and tilt movement. After completion of self-test actions, a reminding tone will be given out, and then you can control the camera on the iNuliet app.

Download the app

Go to the App store (for iPhone) or the Google Play store (for android) and search for "iNuliet". Please download and install it. Then the app icon will be displayed after successful installation.

03

Add Camera

Run the app and click (sign up) to create a new account. Then you will enter into the registering page as below. Please create a user name and password. The jumping page reminds you that the activation link has been sent to your email, please activate your email.

pic 1

pic 2

04

Camera Connection

step1. Run the app on your phone. Input the account and password and click [login] to login the app.

pic 3

pic 4

Step2. Open the WLAN and find the camera WIFI starts with iNuliet. Type the camera WIFI password (default: admin888).

pic 5

pic 6

05

Camera Connection

Step3. Enter into the APP again. Click "+" to add camera, and then choose [QRcode] to scan the QR-code tapped on the bottom of the camera. Type the camera default password 888888 and click "✓" to finish the connection (pic8).

pic 7

pic 8

Step4. The camera will show "connected" status, just click it to view the image.

pic 9

pic 10

Note: the above steps show the direct connection. You have to connect your camera to the public network so that remote monitoring can be achieved.

06

Camera Connection

Step5. (For iPhone) click (Settings) button to enter the setting interface. Click[WIFI networks]to search the local WIFI.

pic 11

pic 12

(For Android) click (Settings) button to enter the setting interface. Click [WIFI networks]to search the local WIFI

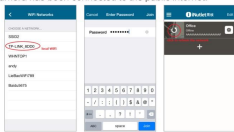
pic 13

pic 14

07

## Camera Connection

Step6. Choose a local WIFI and enter its password. Please make sure that you can visit the public internet through this local WIFI. Then the camera WIFI breaks off shortly, please return to previous interface and refreshes the network (pic17). Successful connection means your camera has been connected to the public internet.



pic 15

pic 16

pic 17

The people who are far away can also view your video with your iNtulet camera UID and password. But before remote view, you need to open your camera and make sure it is connected to your local WIFI which can lead to public network, only in this way, the people far away can visit your camera through 2G, 3G, 4G wireless network or any other public network.

08

## Buttons Function Description



- 1, view the photos
- 2, snap the pictures
- 3, flip over the image
- 4, mirror the image
- 5, adjust the image quality
- 6, set the presets
- 7, enable /off horizontal / vertical cruises
- 8, adjust the brightness of image
- 9, adjust the contrast of image
- 10, receive the voice from the camera
- 11, Bidirectional voice
- 12, video

09

## Configuration



**iPhone**  
UID : Check the camera UID  
Camera name : check and modify the camera name  
Camera password : the box of camera password  
Security code : modify the camera password  
WiFi networks : check the current wireless network and modify it  
Time zone : modify the time zone  
Format SDCard : Format the TF card  
Event setting : Motion detection. An alarm will be given out if detecting moving targets.  
Camera info : check the camera information  
Reconnect : reconnect this camera  
Remove device : delete this camera

10

## Configuration




**Android**  
UID : Check the camera UID  
Device name : check and modify the camera name  
Device password : the box of camera password  
Change password : modify the camera password  
WiFi networks : check the current wireless network and modify it  
Time zone : modify the time zone  
Format SDCard : Format the TF card  
Event setting : Motion detection. An alarm will be given out if detecting moving targets.  
Device info : check the camera information  
Reconnect : reconnect this camera  
Remove device : delete this camera

11

## Check information



Click  button on the upper left corner to check app information.  
Event: search the motion events.  
Album: view the pictures and video  
About: there are four submenus; function introduction, check version, app version, feedback.  
Login/logout: login/logout the account

12

## FCC STATEMENT:

This equipment has been tested and found to comply with the limits for a Class B digital device, pursuant to Part 15 of the FCC Rules. These limits are designed to provide reasonable protection against harmful interference in a residential installation. This equipment generates uses and can radiate radio frequency energy and, if not installed and used in accordance with the instructions, may cause harmful interference to radio communications. However, there is no guarantee that interference will not occur in a particular installation. If this equipment does cause harmful interference to radio or television reception, which can be determined by turning the equipment off and on, the user is encouraged to try to correct the interference by one or more of the following measures:

- Reorient or relocate the receiving antenna.
  - Increase the separation between the equipment and receiver.
  - Connect the equipment into an outlet on a circuit different from that to which the receiver is connected.
  - Consult the dealer or an experienced radio/TV technician for help.
- Changes or modifications not expressly approved by the party responsible for compliance could void the user's authority to operate the equipment.
- This device complies with part 15 of the FCC Rules. Operation is subject to the following two conditions: (1) This device may not cause harmful interference, and (2) this device must accept any interference received, including interference that may cause undesired operation.

The antenna(s) used for this transmitter must be installed to provide a separation distance of at least 20 cm from all persons and must not be co-located or operating in conjunction with any other antenna or transmitter.

If you experience any problems during installation, you can be solved by consulting the following steps:  
Access store's official website: [www.inutlet.com](http://www.inutlet.com)  
Call the service hotline: 400-050-0639



iNtulet Smart Home IP Camera

iNtulet N1 User Manual

Please read carefully before using the product Quick Start Guide, and keep it.