



# Y641

LED**蓝牙**音箱

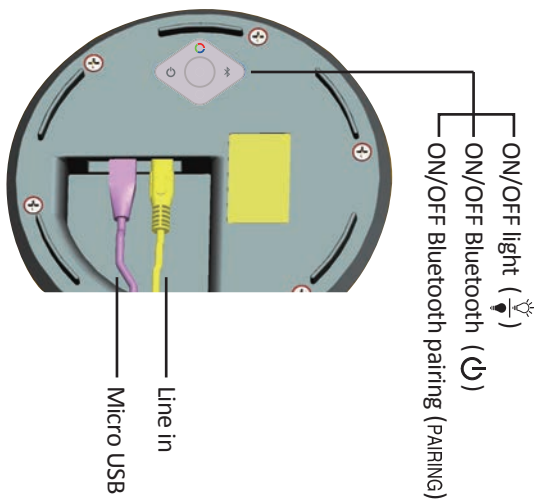
---

LED *Bluetooth* speaker

Thank you for buying our product, you can use this speaker to stream music from smartphone, tablet, PC or Mac through *Bluetooth*. Please read this manual before use and retain it for future reference.

“The *Bluetooth*<sup>®</sup> word mark and logos are registered trademarks owned by *Bluetooth* SIG, Inc. and any use of such marks by LOGO is under license. Other trademarks and trade names are those of their respective owners.”

# Controls And Indicators



## Controls And Indicators



ON/OFF light button



Change the brightness intensity(Enhance/ weaken)



Red color button



Green color button



Blue color button



Purple color button



Lightgreen color button



Cyan color button



Soft/warm candle color



White color

## Controls And Indicators

 Track button

 Lower/Raise volume

 Play/Pause button

 ON/OFF speaker button

PAIRING — Press and hold to begin connecting a Bluetooth device

FLASH — Eight individual colors display one by one automatically

STROBE — Winking one color showed before press this button





FADE — Red, Blue and Green color scrolling automatically

SMOOTH — Six colors scrolling automatically and gradually change


 — The light is rhythmic beating to follow the music

MODE — The switch from Bluetooth Mode to Lin-in Mode

## Bluetooth Mode

- Press the button “” over 2 seconds on the speaker or press the button “” on the remote control to turn on the *Bluetooth* mode, the *Bluetooth* indicator slowly blinks blue and the speaker emits a tone.
- With your device and LED speaker both turned on, press the button “” to make the speaker discoverable or press the button “” over 3 seconds. The *Bluetooth* indicator quickly blinks blue and the speaker emits a tone.
- Set your *Bluetooth* device to be discoverable so it can discover (detect) the LED *BLUETOOTH* SPEAKER. Locate the *Bluetooth* device list in the user interface of your device.
- From the *Bluetooth* device list, select the device named “Y640”. Press it and the speaker emits a tone. When *Bluetooth* indicator keeps light, *Bluetooth* pairing is complete.
- Automatically playing with beating light under the *Bluetooth* mode.
- Light and play can be separately working.

## Line in Mode

Press the button “”. The speaker is in the mode of line in when you hear the voice of “line in” from the speaker.

### **Note:**

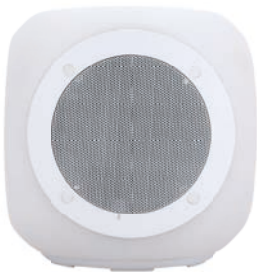
If you are unable to play your device at any situation, press the button to turn the LED *BLUETOOTH* SPEAKER on again and reconnect, or power-on reset.

## Charging

Under charging, the indicator is on red. Indicator does not light when the charging complete (Charging is full).



Under Charging



Full Charging

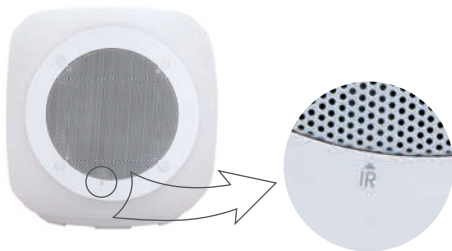
### **Note:**

- Suggest to put on the cap well when charging has completed, especially in the rainy day.
- Low-battery warning: Auto OFF after red light is flashing for 10 seconds



## Operation Reminder

- Suggest use the speaker on the balcony, garden, party on-site, Bar, or other outdoors.
- On the sunshine and rainwater or very low temperature, do not expose the speaker for a long time. Suggest take it back to indoor to increase the service lifetime.
- Power-on reset:Reset one time for Power-ON/OFF
- To smoothly control the LED *BLUETOOTH* SPEAKER by remote control, do not have any objects (grass, stool, etc. ) on the location of showed picture as follows:



Receiver of remote control

## Technical Data

- Adapter: Input 100-240AC   Output 5V/1A
- RGB LED
- Battery: 4400mAH
- Working time: 30 hours (LED Flashing mode only);  
12 hours (Music mode only)
- Charging time: 8-10H
- Bluetooth: Bluetooth 3.0
- Bluetooth range 10M

## Relevant Declaration

- This product bears the selective sorting symbol for waste electrical and electronic equipment (WEEE).
- This means that this product must be handled pursuant to European Directive 2002/96/EC in order to be recycled or dismantled to minimize its impact on the environment.
- For further information, please contact your local or regional authorities.



Electronic products not included in the selective sorting process are potentially dangerous for the environment and human health due to the presence of hazardous substances.

## **FCC Statement**

This device complies with Part 15 of the FCC Rules. Operation is subject to the following two conditions:

- (1) This device may not cause harmful interference, and
- (2) This device must accept any interference received, including interference that may cause undesired operation.

Please take attention that changes or modification not expressly approved by the party responsible for compliance could void the user's authority to operate the equipment.

## FCC Statement

Note: This product has been tested and found to comply with the limits for a Class B digital device, pursuant to Part 15 of the FCC Rules. These limits are designed to provide reasonable protection against harmful interference in a residential installation. This product generates, uses, and can radiate radio frequency energy and, if not installed and used in accordance with the instructions, may cause harmful interference to radio communications. However, there is no guarantee that interference will not occur in a particular installation. If this product does cause harmful interference to radio or television reception, which can be determined by turning the equipment off and on, the user is encouraged to try to correct the interference by one or more of the following measures:

- Reorient or relocate the receiving antenna.
- Increase the separation between the equipment and receiver.
- Connect the equipment into an outlet on a circuit different from that to which the receiver is connected.
- Consult the dealer or an experienced radio/TV technician for help.

This equipment should be installed and operated with a minimum distance 20cm between the radiator and your body