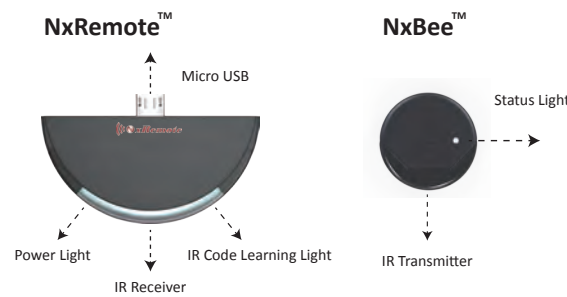


# NxRemote™ Kit User Manual

©2015 NxControl System Co, Ltd. All right reserved.  
All other trademarks are the property of their respective owners.  
The use of the word partner does not imply a partnership relationship and any other company.  
NxControl assures no responsibility for any errors that may appear in the manual.  
Information contained here in is subject to change without notice.

ZMUUDE0002 2015.12



NxRemote™	
Device Type	Remote Dongle
Wireless Type	ZigBee
IR Code Learning	Yes
Interface	Micro USB
Personal Scenario Setting	Yes
Operating System	Android 4.0 above, USB OTG Supported
Color	Black / White
Sizes (LxWxH)	49.8 x 22.0 x 7.0 mm
Weight	15g

NxBee™	
Device Type	RF to IR Adapter
Wireless Type	ZigBee
Networking Range	30 m above (In door)
IR Frequency	36 KHz ~ 56 KHz
Power	3V CR2032 Lithium Battery
Color	Black / White
Sizes (RxH)	R13.0 x 7.3 mm
Weight	10g

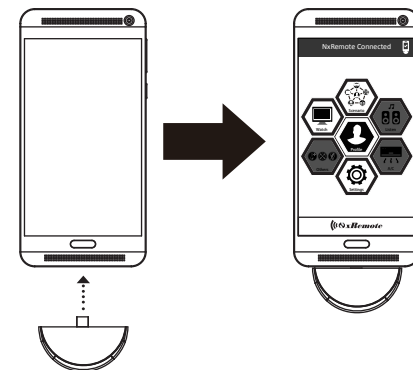
## 1. Download APP

Scan QR code or search “NxRemote” for downloading APP on Google Play.



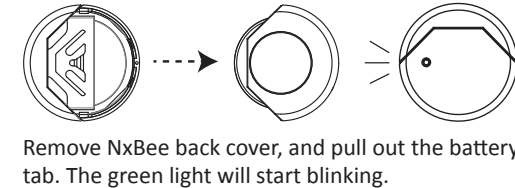
## 2. Plug in

1. Check your Android phone / tablet supporting USB OTG function.  
List of Android Phones and Tablet supports OTG Function:  
<http://www.nxcontrol.com/OTG.html>

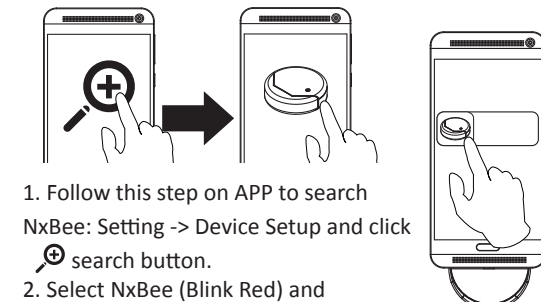


2. When notice message shows up, make sure to check “Use by default for this USB device” to allow the app to access your USB device.  
(Some devices need to enable USB OTG function. e.g. Sony : Settings -> Xperia Connectivity -> USB Connectivity -> Detect USB device)

## 3. Pair

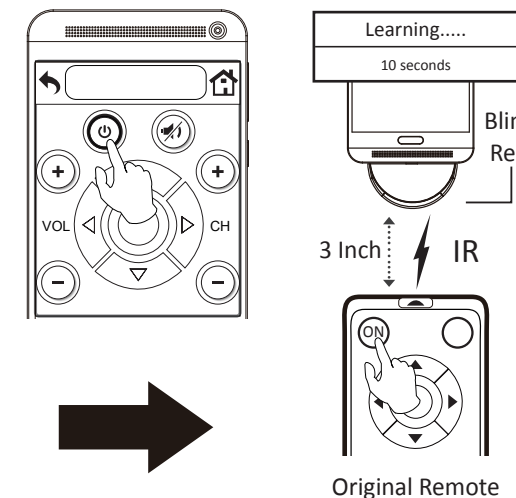


Remove NxBee back cover, and pull out the battery tab. The green light will start blinking.



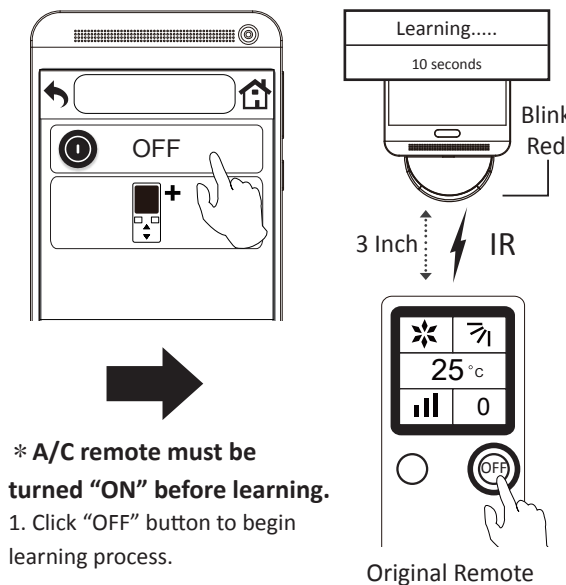
1. Follow this step on APP to search NxBee: Setting -> Device Setup and click search button.  
2. Select NxBee (Blink Red) and enter confirmation number, it will stop blink and show up on the screen.  
3. Click NxBee icon. If it connects with NxRemote correctly, the green light will blink. If not, please replace battery and try again.

## 4. Setup & Learn IR codes



Click corresponding key on your original remote to learn IR code. If the countdown message disappears, the button learning process is completed.

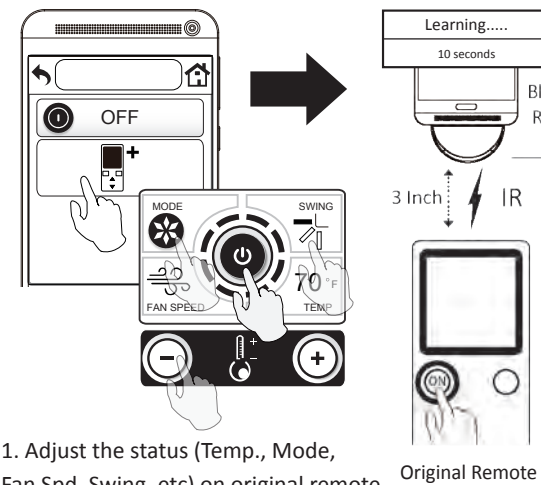
### 4.1 Learn A/C (OFF Button)



\* A/C remote must be turned “ON” before learning.  
1. Click “OFF” button to begin learning process.

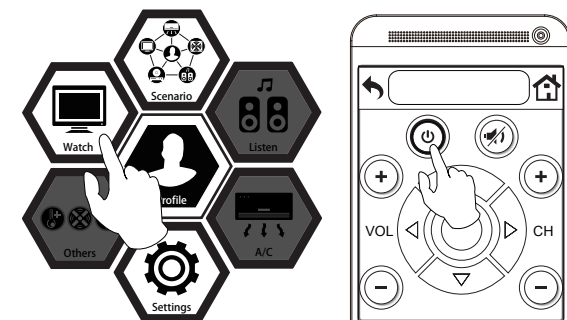
2. Point your original remote at the bottom of Nx Remote, and click OFF key to learn the IR code.

### 4.2 Learn A/C (ON Button)



1. Adjust the status (Temp., Mode, Fan Spd, Swing, etc) on original remote and NxRemote with the same status what you prefer.  
\* A/C remote must be turned “OFF” before learning.  
2. Click “Power” button to begin learning process, point your original remote at the bottom of NxRemote and click the power key to learn the IR code.

## 5. Try Your NxRemote

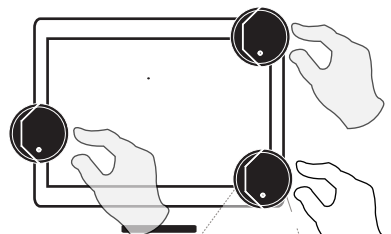


1. Press Home key or back button on top left side to home page, the device icons will light up.  
2. Press Power key on your NxRemote APP to check if the device works.

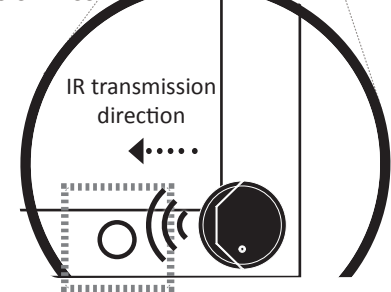


Green light will blink when you press the button key.

## 6. Adhere NxBee

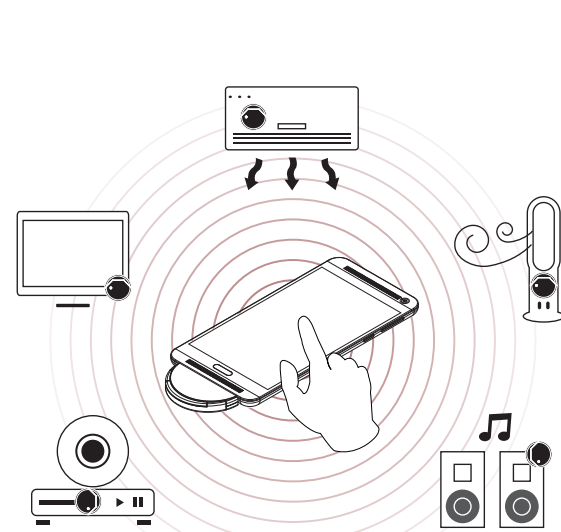


1. Place NxBee close to IR receiving area (near power light usually) and try turn on/off.  
2. Find an available IR receiving area and then adhere NxBee.



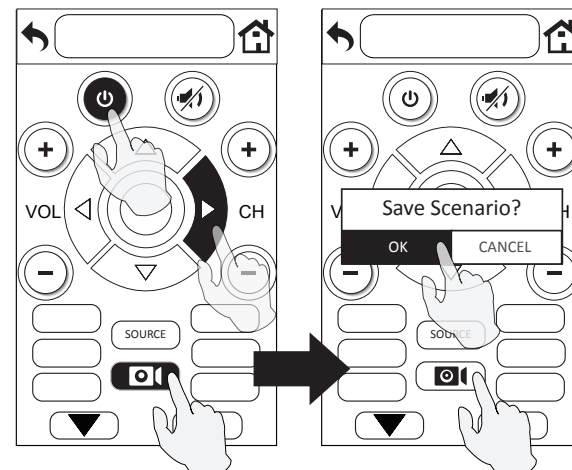
IR receiving area (Do NOT cover power light.)

## 7. Control

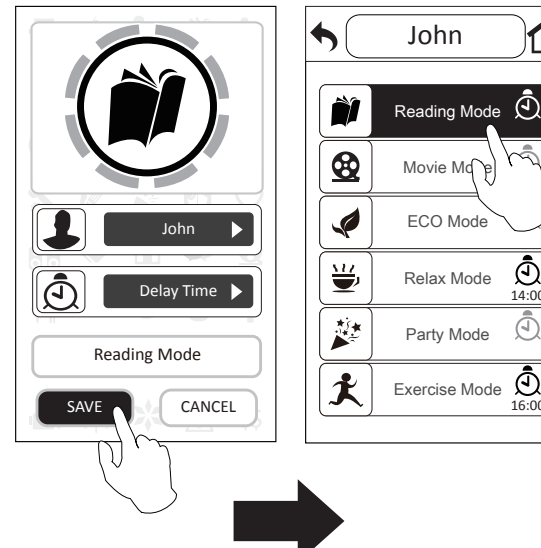


NxRemote Kit should only be used in environments with ambient temperatures between 0°C (32°F) and 35°C (95°F)

## 8. Scenario Setup



1. Press record button to start up.  
2. Start your control process, and click record button again when you finish all actions.  
3. Save your action to move on next step.



4. Choose your scenario icon and select user if already add one, set delay time for each buttons if necessary, name your mode and save it.  
5. Try and enjoy your Scenario by one click.

## Warranty Information Form

Mr./Mrs./Ms./Miss: \_\_\_\_\_  
Telephone Number: \_\_\_\_\_  
Address: \_\_\_\_\_  
E-mail: \_\_\_\_\_  
Purchase Date: \_\_\_\_\_ / \_\_\_\_\_ / \_\_\_\_\_ (DD/MM/YYYY)  
Dealer's Name: \_\_\_\_\_  
Dealer's Telephone Number: \_\_\_\_\_  
Dealer's Address: \_\_\_\_\_

## Important Safety Information

When using this product, the safety precautions below must be taken avoid possible legal liabilities and damages.  
Retain and follow all product safety and operation instructions.  
Observe all warnings in the operation instructions on the product.  
To reduce the risk of bodily injury, electric shock, fire and damage to the equipment. Observe the following precautions.  
**Care**  
Do not open NxRemote. There are no user-serviceable parts inside. Do not allow moisture to enter the unit. Moisture will corrode the inner electronics. Any changes or modifications not expressly approved by NxControl void the user's authority to operate the device and could void the warranty. The product should only be used in environments with ambient temperatures between 0 degree C (32 degree F) and 35 degree C (95 degree F).  
**Handle Battery Carefully**  
NxBee contains a lithium non-rechargeable battery. Battery life is dependent upon usage. Heavy daily use will result in shorter battery life. There is a risk of fire and burns if the battery is handle improperly. Do not disassemble, crush, puncture, short external contacts or circuits, dispose of in fire or water, or expose a battery to temperatures higher than 60 degree C (140 degree F).  
**End-of-life Battery Disposal Instructions**  
If battery is end-of-life, consult local laws and regulations for proper battery disposal in your area. If there are no local regulations concerning battery disposal, please dispose of the dead battery in a waste bin for electronic devices. KEEP ALL BATTERIES OUT OF THE REACH OF CHILDREN.

**Disposal and Recycling Information**  
The symbol indicates that your product must be disposed of properly according to local laws and regulations. When your product reaches its end of life, contact your local authorities to learn about recycling options.  
European Union – Disposal Information  
The symbol above means that according to local laws and regulations your product and/or its battery shall be disposed of separately from household waste. When this product reaches its end of life, take it to a collection point designated by local authorities. The separate collection and recycling of your product and/or its battery at the time of disposal will help conserve natural resources and ensure that it is recycled in a manner that protects human health and the environment.

**Safety Precaution for Small Children**  
Do not leave your product within the reach of small children or allow them to play with it. They could hurt themselves or others, or could accidentally damage the product. Your product contains small parts with sharp edges that may cause an injury or which could become detached and create choking hazard. Consult the doctor immediately if the accessories or battery are swallowed.  
Do not disassemble it or attempt to recharge it outside the system. Do not crush, puncture, dispose of in fire, short the external contacts, or expose to water or other liquids. Dispose of the battery in accordance with local regulations and instructions from your service provider.

## Limited Warranty Statement

The Limited Warranty Statement is a voluntary manufacturer's warranty. It provides rights separate to rights provided by consumer law, including but not limited to those relating to non-conforming goods. As such, the Limited Warranty Statement benefits are in addition to, and not instead of, rights provided by consumer law.  
Your hardware product is warranted against defects in materials and workmanship for a period of ONE (1) YEAR from the date of original retail purchase ("Warranty Period"). If a defect arises during the Warranty Period, NxControl, at its option and to the extent permitted by law will (1) repair the product at no charge using new parts or parts that are equivalent to new in performance and reliability, or (2) exchange the product with a functionally equivalent product that is new or equivalent to new in performance and reliability. This warranty excludes damage resulting from abuse, accident, modifications or other causes that are not defects in materials and workmanship.  
Other than the consumer law rights to which you are entitled, all warranties, conditions and other terms not set out in this warranty document are excluded from the Limited Warranty Statement. Some countries do not allow limitations on how long such warranties, conditions and / or implied terms may last, so the limitation described above may not apply to you. NxControl does not warrant, represent or undertake that it will be able to repair or replace any NxControl Product under this warranty without risk to and / or loss of information and / or data stored on the NxControl Product. In no event shall NxControl be liable for (a) any losses that were not caused by our breach of this warranty document; (b) any loss or damage that was not, at the time of your purchase of the product, a reasonably foreseeable consequence of NxControl breaching this warranty document; or (c) losses relating to any business of yours, loss of profits, loss of data or loss of opportunity. The provisions of this warranty document shall not apply to (i) death or personal injury, (ii) fraud or gross negligence; or (iii) fraudulent misrepresentation; or (iv) any other liability that cannot be limited or excluded as a matter of law.  
Some countries do not allow limitations on how long an implied warranty lasts, or allow exclusion or limitation of incidental or consequential damages, so the above limitations or exclusions may not apply to you. This warranty gives you specific legal rights, and you may also have other rights, which vary from country to country. Proof of purchase may be required to verify eligibility.  
For more information and contact support, please refer to NxControl webpage at <http://www.nxcontrol.com>

## Federal Communication Commission Interference Statement

This equipment has been tested and found to comply with the limits for a Class B digital device, pursuant to Part 15 of the FCC Rules. These limits are designed to provide reasonable protection against harmful interference in a residential installation. This equipment generates, uses and can radiate radio frequency energy and, if not installed and used in accordance with the instructions, may cause harmful interference to radio communications. However, there is no guarantee that interference will not occur in a particular installation. If this equipment does cause harmful interference to radio or television reception, which can be determined by turning the equipment off and on, the user is encouraged to try to correct the interference by one or more of the following measures:

- ☐ Reorient or relocate the receiving antenna.
- ☐ Increase the separation between the equipment and receiver.
- ☐ Connect the equipment into an outlet on a circuit different from that to which the receiver is connected.
- ☐ Consult the dealer or an experienced radio/TV technician for help.

FCC Caution: Any changes or modifications not expressly approved by the party responsible for compliance could void the user's authority to operate this equipment.

This device complies with Part 15 of the FCC Rules. Operation is subject to the following two conditions: (1) This device may not cause harmful interference, and (2) this device must accept any interference received, including interference that may cause undesired operation.

This device complies with Industry Canada's licence-exempt RSSs. Operation is subject to the following two conditions:

- (1) This device may not cause interference; and
- (2) This device must accept any interference, including interference that may cause undesired operation of the device.

*Le présent appareil est conforme aux CNR d'Industrie Canada applicables aux appareils radio exempts de licence. L'exploitation est autorisée aux deux conditions suivantes : (1) l'appareil ne doit pas produire de brouillage, et (2) l'utilisateur de l'appareil doit accepter tout brouillage radioélectrique subi, même si le brouillage est susceptible d'en compromettre le fonctionnement.*

CAN ICES-3 (B)/NMB-3(B)

IMPORTANT NOTE:

IC Radiation Exposure Statement:

This equipment complies with IC RSS-102 radiation exposure limits set forth for an uncontrolled environment.

*Cet équipement est conforme aux limites d'exposition aux rayonnements IC établies pour un environnement non contrôlé.*