

GHOST MULTI CONNECT™ KIT

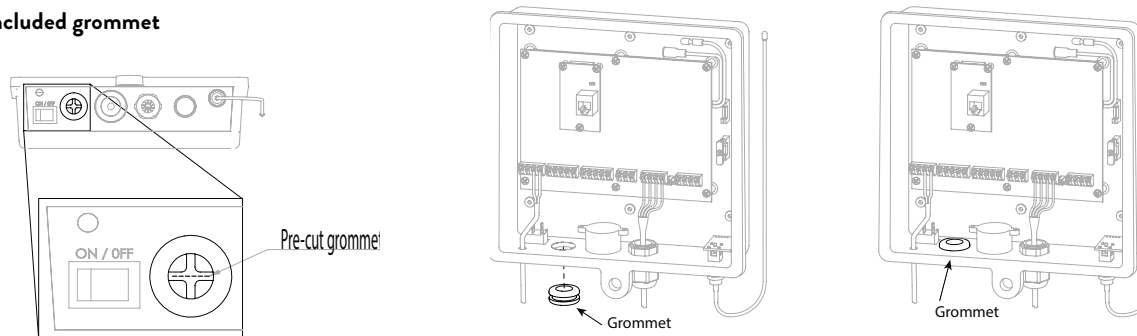
AXMC-R INSTRUCTIONS

*This kit gives you the ability to control your gate with your mobile device.

STEP 1. MOUNT THE MULTI CONNECT™ KIT CLOSE TO THE CONTROL BOX

STEP 2. REMOVE THE STRAIN RELIEF ON BOTTOM OF CONTROL BOX AND REPLACE IT WITH THE GROMMET

- ◆ Add the included grommet



STEP 3. ADDING THE *GHOST MULTI CONNECT™ KIT TO THE CONTROL BOARD

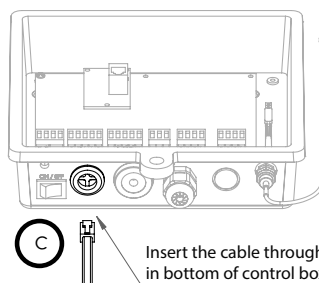
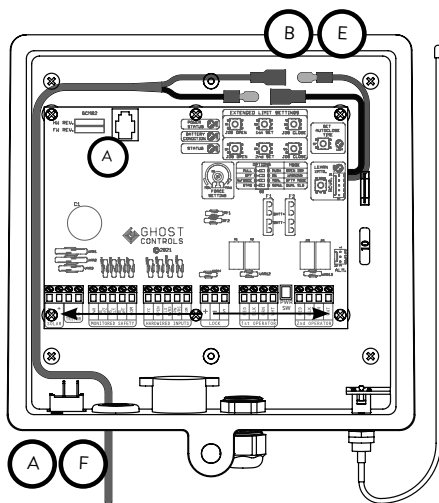
- A. Turn off the gate opener at the control box
- B. Disconnect the battery terminal cables in the control box.
- C. Route the Ghost Multi Connect™ Kit cable wire into your control box using the new grommet you added in Step 2.
- D. Plug in your Ghost Multi Connect™ Kit terminal into the socket on the control board (A)
- E. Re-connect the battery terminal cable.
- F. Turn on the control box.
- G. Go to the Google Play or Apple App Store and download the Remootio App to your phone (free)
- H. Follow the setup instructions in the app



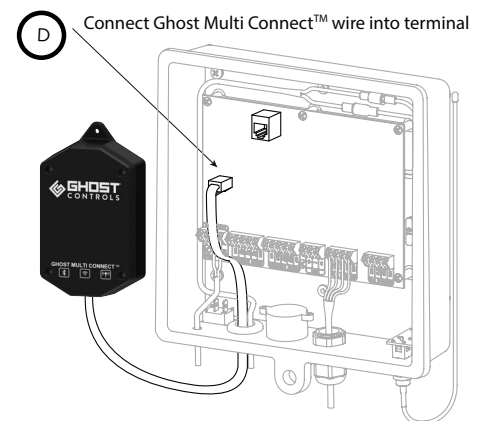
Google Play
Remootio



Apple App
Remootio



Insert the cable through the new hole
in bottom of control box



www.GhostControls.com

Made in China, AXMCIM | Rev. 2023-07
©2023 GHOST CONTROLS®

GHOST MULTI CONNECT™ KIT

■ AXMC-R INSTRUCTIONS

FCC Warning

This device complies with part 15 of the FCC rules. Operation is subject to the following two conditions: (1) this device may not cause harmful interference, and (2) this device must accept any interference received, including interference that may cause undesired operation.

Changes or modifications not expressly approved by the party responsible for compliance could void the user's authority to operate the equipment.

NOTE: This equipment has been tested and found to comply with the limits for a Class B digital device, pursuant to part 15 of the FCC Rules. These limits are designed to provide reasonable protection against harmful interference in a residential installation. This equipment generates uses and can radiate radio frequency energy and, if not installed and used in accordance with the instructions, may cause harmful interference to radio communications. However, there is no guarantee that interference will not occur in a particular installation. If this equipment does cause harmful interference to radio or television reception, which can be determined by turning the equipment off and on, the user is encouraged to try to correct the interference by one or more of the following measures:

- Reorient or relocate the receiving antenna.
- Increase the separation between the equipment and receiver.
- Connect the equipment into an outlet on a circuit different from that to which the receiver is connected.
- Consult the dealer or an experienced radio/TV technician for help.

Radiation Exposure Statement

This equipment complies with FCC radiation exposure limits set forth for an uncontrolled environment. This equipment should be installed and operated with minimum distance 20cm between the radiator and your body.

