

speaker. Avoid interference by keeping the FM radio antenna away from the speaker and power cables.

- For AM broadcasts, you will have to rotate, reposition, or move the entire unit if reception is poor. The AM antenna is built directly into the unit.
- Press SKIP/SEARCH ◀◀ or SKIP/SEARCH ▶▶ to select a broadcast station.

Preset Stations

To save a radio station to preset station memory:

1. Press PROGRAM on the unit or the remote.
2. Press the REPEAT/M-UP or RANDOM/M-DN buttons to select a the preset station number for the current radio station.
3. Press SKIP/SEARCH ◀◀ or SKIP/SEARCH ▶▶ to tune to a station.
4. Press PROGRAM to confirm and save.
5. To cycle through saved radio stations, press REPEAT/M-UP or RANDOM/M-DN.

Bluetooth® Mode

Basic Operation

This unit can stream audio wirelessly from devices that can transmit stereo audio with Bluetooth® technology.

1. Press FUNCTION to set the unit to Bluetooth® mode. The “BT” indicator will flash on the display.
2. Enable Bluetooth on the source device.
3. Set the source device to search for other Bluetooth devices. (Refer to the user manual of your device if you need help with this step.) Select the microsystem “Naxa NS-439” when your device finds it. If your device prompts you for a passcode, enter “0000”.
4. After a successful pairing, the “BT” indicator will light steady on the display. You can now stream music wirelessly from your source device to the microsystem.
5. Some devices may allow you to control playback from the microsystem. Press PLAY/PAUSE to start playback, press SKIP UP to advance to the next

track, or press SKIP DOWN to return to the previous track.



*If the pairing attempt fails, the unit will no longer be in pairing mode. Press and hold the **WFM ST.** button to return the unit to pairing mode. If this doesn't work, turn the unit off and then try again.*

The unit will try to reconnect automatically with the last paired device when it is placed in Bluetooth mode.

If the Bluetooth connection is lost due to external factors, or if it will not reconnect automatically, you may need to pair again with the NS-439. Clear the NS-439 from the Bluetooth Devices list from the Bluetooth Devices list on your source device before pairing again.

The unit can display and adjust the clock while in Bluetooth mode. Refer to the section "SETUP MODE" for instructions.

AUX Mode

Auxiliary (Aux) mode allows you to play and audio device (e.g., MP3, cassette player, etc.) through your NS-439 system.

Basic Operation

1. Use a 3.5mm male line in cable (included) to connect the Line-out or Headphone out jack of an audio device to the AUX IN jack [17] of the system.
2. Press STANDBY to turn the player on.
3. Press FUNCTION repeatedly to select AUX mode.
4. Start playback on the external audio device.
 - You must use the external audio device to control playback.
 - To avoid distortion, do not set the volume of the external audio device to very high levels.



The clock can be adjusted in AUX mode as well as in Standby mode. The procedure to adjust the clock time is the same; refer to the "Setup Mode" section to learn more.

Setup Mode

Clock/Display

1. If the system is on, press STANDBY to switch the unit to standby mode.
2. Press and hold PROGRAM. The LCD will start to flash "12 H" or "24 H."
3. Press SKIP/SEARCH ◀◀ or SKIP/SEARCH ▶▶ to change between the two display modes, then press PROGRAM to confirm. The hour digit will flash.
4. Press SKIP/SEARCH ◀◀ or SKIP/SEARCH ▶▶ to adjust the hour, then press PROGRAM to confirm. The minutes digit will flash.
5. Press SKIP/SEARCH ◀◀ or SKIP/SEARCH ▶▶ to adjust the minutes, then press PROGRAM to confirm.

CD Care & Maintenance

Handling CDs

Hold a CD by its edges. Avoid touching the recorded side of the disc. To remove a CD from its storage case, press down on the center retention mechanism of the case and lift the disc out by its edges.

Cleaning CDs

Use a dry, soft cloth to wipe off any fingerprints and dust from the playing surface of the disc. Wipe in a straight line radially from the center to the outside edge of the disc. Small dust particles and light stains will not affect playback quality.

- Never use chemicals such as record sprays, anti-static sprays, benzene, or thinners to clean your CDs.
- To reduce the risk of scratches, always put CDs back in their case after use.



- Do not subject CDs to prolonged exposure to direct sunlight, high humidity, or high temperatures.
- Do not place stickers or labels on either side of the CD.

Cleaning the Lens of the CD Player

A dirty lens can cause CD playback to skip. If the lens is very dirty, the CD may not work at all. Unplug the power supply, open the CD door, and clean the lens as follows:

- For Dust or Dry Particles—use a camera lens brush/blower to blow on the lens a few times. Then, wipe the lens gently with the brush, and blow on the lens once more.
- For Fingerprints—use a dry cotton swab to gently wipe the lens in a straight line radially from the center to the outside edge.

Warnings and Precautions

	CAUTION WARNING: SHOCK HAZARD. DO NOT OPEN. AVIS: RISQUE DE CHOC ELECTRIQUE. NE PAS OUVRIR	
CAUTION: TO REDUCE THE RISK OF FIRE AND ELECTRIC SHOCK, DO NOT REMOVE THE COVER (OR BACK) OF THE UNIT. REFER SERVICING ONLY TO QUALIFIED SERVICE PERSONNEL.		



The lightning flash with arrowhead symbol within an equilateral triangle is intended to alert the user to the presence of uninsulated “dangerous voltage” within the product’s enclosure that may be of significant magnitude to constitute risk of electric shock




The exclamation point within an equilateral triangle is intended to alert the user to the presence of important operation and servicing instructions in the literature accompanying the appliance.

WARNING

To prevent fire or shock hazard, do not expose this device to rain or moisture. Dangerous high voltage is present inside the enclosure. **DO NOT OPEN THE CABINET.**

CAUTION

To prevent electric shock, match the wide blade of the plug to the wide slot of the outlet and insert fully.

CLASS 1 LASER PRODUCT		
CLASS 1 LASER PRODUCT APPAREIL LASER DE CLASSE 1 PRODUCTO LASER DE CLASE 1	CAUTION INVISIBLE LASER RADIATION WHEN OPEN AND INTERLOCKS DEFEATED. AVOID EXPOSURE TO BEAM	
This product contains a low power laser device.		

On Protection Against Laser Energy Exposure

- As the laser beam used in this product is harmful to the eyes, do not attempt to disassemble the casing.
- Stop operation immediately if any liquid or solid object should fall into the cabinet.
- Do not put anything in the safety slot. If you do, the laser diode will be ON when the disc compartment door is still open.
- If the unit is not to be used for a long period of time, make sure that all power sources are disconnected from the unit. Remove all batteries from the battery compartment, and unplug the AC-DC adapter from the wall outlet. Make it a practice to remove the AC-DC adapter by grasping the main body and not by pulling the cord.
- This unit employs a laser. The use of controls or adjustment or performance of procedures other than those specified here may result in exposure to hazardous radiation.

On Placement

- Do not use the unit in places which are extremely hot, cold, dusty, or humid.
- Place the unit on a flat and even surface.
- Do not restrict the airflow around the unit by placing it in an area with poor ventilation, by covering it with a cloth, or by placing it on a carpet or other soft surface.

On Condensation

- When left in a heated room where it is warm and damp, water droplets or condensation may form inside the unit. When there is condensation inside the unit, the unit may not function normally. Let the unit stand 1 to 2 hours before turning the power on, or gradually heat the room up and dry the unit before use.

Should any trouble occur, disconnect the unit from power and refer servicing to qualified personnel.

PROTECT YOUR HEARING

Hearing experts advise against the constant use of personal stereos played at high volume. Constant exposure to high volumes can lead to hearing loss. If you should experience ringing in the ears or hearing loss, discontinue use and seek medical advice.

WARNING:

This product contains lead, a chemical known to the State of California to cause cancer and birth defects or other reproductive harm. ***Wash hands after handling.***

Important Safety Information

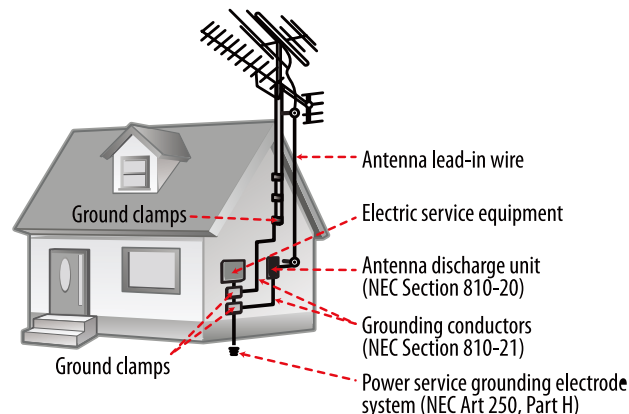
1. **Read Instructions:** All the safety and operating instructions should be read before the product is operated.
2. **Retain Instructions:** The safety and operating instruction should be retained for future reference.
3. **Heed Warnings:** All warnings on the product and in the operating instructions should be adhered to.
4. **Follow Instructions:** All operating and usage instructions should be followed.
5. **Cleaning:** Unplug this product from the wall outlet before cleaning. Do not use liquid cleaners or aerosol cleaners. Use a damp cloth for cleaning.
6. **Attachments:** Use only attachments recommended by the manufacturer. Use of other attachments may be hazardous.
7. **Water and Moisture:** Do not use this product near water (e.g., near a bathtub, washbowl, kitchen sink, laundry tub, in wet basements, or near a swimming pool and the like).
8. **Accessories:** Do not place this product on an unstable cart, stand, tripod, bracket, or table. Use only with carts, stands, tripods, brackets, or tables recommended by the manufacturer or sold with the product. Any mounting of the product should follow the manufacturer's instructions and should use a mounting accessory recommended by the manufacturer. A product and cart combination should be moved with care. Quick stops, excessive force, and uneven surfaces may cause the product and cart combination to overturn.
9. **Ventilation:** Slots and openings in the cabinet are provided for ventilation to ensure reliable operation of the product and to protect it from overheating. These openings should never be blocked by placing



the product on a bed, sofa, rug, or other similar surface. This product should not be placed in a built-in installation such as a bookcase or rack unless proper ventilation is provided or the manufacturer instructions have been adhered to.

10. **Power Sources:** This product should be operated only from the type of power source indicated on the rating label. If you are not sure of the type of power supply to your home, consult your product dealer or local power company. For products intended to operate from battery power or other sources, refer to the operating instructions.
11. **Grounding or Polarization:** This product may be equipped with a polarized alternating-current line plug that has one blade wider than the other. This plug will only fit into the power outlet in one direction. This is a safety feature. If you are unable to insert the plug fully into the outlet, try reversing the direction of the plug. If the plug should still fail to fit, contact an electrician to replace the obsolete outlet. Do not defeat the safety purpose of the polarized plug.
12. **Power-Cord Protection:** Power supply cords should be routed so that they are not likely to be walked on or pinched by items placed upon or against them, paying particular attention to cords at plugs, convenience receptacles, and at the point which they exit from the product.
13. **Protective Attachment Plug:** The product may be equipped with an attachment plug with overload protection. This is a safety feature. See the operating instructions for replacement or directions to reset the protective device. If replacement of the plug is required, be sure the service technician has used a replacement plug that has the same overload protection as the original plug as specified by the manufacturer.
14. **Outdoor Antenna Grounding:** If an outside antenna is connected to the product, be sure the antenna system is grounded so as to provide some protection against voltage surges and built-up static charges. Article 810 of the National Electrical Code, ANS/NFPA 70 provides in-

formation with regard to proper grounding of the mast and supporting structure, grounding of the lead-in wire to an antenna-discharge unit, size of grounding conductors, location of antenna-discharge unit, connection to grounding electrodes, and requirements for the grounding electrode (see figure).



15. **Lightning:** For added protection for this product, unplug it from the wall outlet and disconnect the antenna or cable system during a lightning storm or when it is left unattended and unused for long periods of time. This will prevent damage to the product due to lightning or power-line surges.
16. **Power Lines:** An outside antenna system should not be located in the vicinity of overhead power lines or other electric light or power circuits, or where it can fall into such power lines or circuits. When installing an outside antenna system, extreme care should be taken to keep from touching such power lines or circuits, as contact with them might be fatal.

17. **Overloading:** Do not overload wall outlets, extension cords, or integral convenience receptacles as this can result in a risk of fire or electric shock.
18. **Object and Liquid Entry:** Never push objects of any kind into this product through openings as they may touch dangerous voltage points or short-out parts that could result in a fire or electric shock. Never spill liquid of any kind on the product.
19. **Servicing:** Do not attempt to service this product yourself as opening or removing covers may expose you to dangerous voltage or other hazards. Refer all servicing to qualified service personnel.
20. **Damage Requiring Service:** Unplug this product from the wall outlet and refer servicing to qualified service personnel under the following conditions: a) when the power-supply or plug is damaged; b) if liquid has been spilled or if objects have fallen into the product; c) if the product has been exposed to rain or water; d) if the product does not operate normally by following the operating instructions. Adjust only those controls that are covered by the operating instructions as improper adjustment of other controls may result in damage and will often require extensive work by a qualified technician to restore the product to its normal operation; e) if the product has been dropped or damaged in any way; f) when the product exhibits a distinct change in performance—this indicates a need for service.
21. **Replacement Parts:** When replacement parts are required, be sure that your service technician has used replacement parts specified by the manufacturer or have the same characteristics as the original part. Unauthorized substitutions may result in fire, electric shock, or other hazards.
22. **Safety Check:** Upon completion of any service or repairs to this product, ask the service technician to perform safety checks to ensure that the product is in proper operating condition.

23. **Wall or Ceiling Mounting:** The product should be mounted to a wall or ceiling only as recommended by the manufacturer.

24. **Heat:** The product should be situated away from heat sources such as radiators, heat registers, stoves, or other products (including amplifiers) that produce heat.

FCC NOTICE

This device complies with Part 15 of the FCC Rules. Operation is subject to the following two conditions: (1) this device may not cause harmful interference, and (2) this device must accept any interference received, including interference that may cause undesired operation.

Note: This equipment has been tested and found to comply with the limits for a Class B digital device, pursuant to Part 15 of the FCC Rules. These limits are designed to provide reasonable protection against harmful interference in a residential installation. This equipment generates, uses and can radiate radio frequency energy and, if not installed and used in accordance with the instructions, may cause harmful interference to radio communications. However, there is no guarantee that interference will not occur in a particular installation. If this equipment does cause harmful interference to radio or television reception, which can be determined by turning the equipment off and on, the user is encouraged to try to correct the interference by one or more of the following measures:

- Reorient or relocate the receiving antenna.
- Increase the separation between the equipment and receiver.
- Connect the equipment into an outlet on a circuit different from that to which the receiver is connected.
- Consult the dealer or an experienced radio/TV technician for help.

CAUTION ON MODIFICATIONS

Any changes or modifications not expressly approved by the grantee of this device may void the authority granted by the FCC to operate the equipment.

Trademark & Regulatory Statements

©2016 NAXA® ELECTRONICS CORPORATION. ALL RIGHTS RESERVED.

Naxa® is a registered trademark of Naxa Electronics, Inc.

Bluetooth® is a registered trademark owned by Bluetooth SIG, Inc.

All other trademarks and logos are property of their respective owners unless indicated otherwise.

Troubleshooting Guide

This guide lists common problems and their solutions. Please refer to this guide before requesting service. If you need further assistance, please contact Naxa Technical Support (www.naxa.com/naxa_support/).

Symptom	Possible Solution
The sound is distorted.	The unit may be positioned too closely to a large appliance (e.g., a TV or refrigerator). If possible, turn the appliance off or move the unit to another location.
	Ensure that the radio is in broadcast reception range.
	Decrease the volume level.
The CD will not play.	Ensure that the CD has been loaded with its label facing up.
	Ensure that the CD is not damaged, scratched, or dirty.
Playback is "skipping."	Ensure that the CD is not damaged, scratched, or dirty.
	Ensure that the unit has been installed in a stable location and is not subject to excessive vibration and shock.

Symptom	Possible Solution
The remote control doesn't work.	Ensure that there are no obstacles between the remote and the player.
	Point the remote directly at the remote sensor on the main unit.
	Strong light (e.g., direct sunlight, fluorescent lights, strobe lights) may interfere with the remote signal.
	Ensure that the batteries in the remote retain a charge and have been installed correctly.
The player will only play one track, repeatedly.	Try replacing the remote's batteries.
	Ensure that REPEAT mode is off (press REPEAT to cancel).
The Function mode is not working.	Ensure that the CD Compartment lid is closed.
	Try resetting the unit. Switch the unit off and unplug it from power. Wait three minutes, then reconnect power and turn it back on.

Specifications

Speaker Output	Total output power: 4.4W 2 x 2.2W full-range speakers
Removable Media Support	CD, CD-R/RW
Media Formats	CD-audio
Wireless Source	Bluetooth® 3.0
Radio Tuner	AM/FM with digital preset tuning AM: 520–1710 kHz FM: 87.5–108.0 MHz
Input	3.5mm AUX audio
Installation Options	Wall mount, tabletop
Power Source	AC 120V

Note: Product are improved continuously. We reserve the right to modify the product and specifications without prior notice.

Support

If you have problems with your device, please consult the instructions in this manual. Please also visit us on the web at www.naxa.com to get up to the minute news, alerts, and documentation for your device. For additional assistance, please contact Naxa Technical Support.

NAXA Technical Support

2320 East 49th St.

Vernon, CA 90058

http://www.naxa.com/naxa_support/