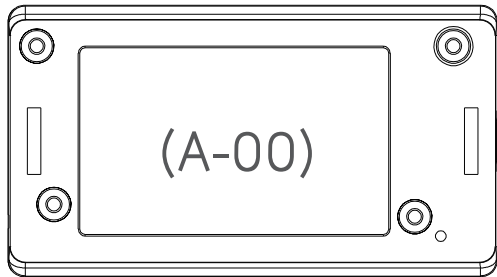


SAFETY NOTE

- 1, This appliance can be used by children aged from 8 years and above and persons with reduced physical, sensory or mental capabilities or lack of experience and knowledge if they have been given supervision or instruction concerning use of the appliance in a safe way and understand the hazards involved.
- 2, Children shall not play with the appliance.
- 3, Cleaning and user maintenance shall not be made by children without supervision.
- 4, If the supply cord is damaged, it must be replaced by the manufacturer, its service agent or similarly qualified persons in order to avoid a hazard.
- 5, WARNING: the drive shall be disconnected from its power source during cleaning, maintenance and when replacing parts.
- 6, The instructions shall state that the A-weighted emis sion sound pressure level of the drive is equal to or less than 70 dB(A), e.g. by writing LpA ≤ 70 dB(A).
- 7, The mass and the dimension of the driven part shall be compatible with the rated torque and rated operating time.
- 8, The type of driven part the drive is intended for.
- 9, WARNING: Important safety instructions. It is important for the safety of persons to follow these instructions. Save these instructions.
- 10, Do not allow children to play with fixed controls. Keep remote controls away from children
- 11, Frequently examine the installation for imbalance and signs of wear or damage to cables and springs. Do not use if repair or adjustment is necessary
- 12, Watch the moving shutter and keep people away until he shutter is completely closed
- 13, WARNING: Important safety instructions. Follow all instructions, since incorrect installation can lead to severe injury.
- 14, Before installing the drive, remove any unnecessary cords and disable any equipment not needed for powered operation



AUTOMATE | Core Tilt Motor



FCC Warning:

This equipment has been tested and found to comply with the limits for a Class B digital device, pursuant to part 15 of the FCC Rules. These limits are designed to provide reasonable protection against harmful interference in a residential installation. This equipment generates, uses and can radiate radio frequency energy and, if not installed and used in accordance with the instructions, may cause harmful interference to radio communications. However, there is no guarantee that interference will not occur in a particular installation. If this equipment does cause harmful interference to radio or television reception, which can be determined by turning the equipment off and on, the user is encouraged to try to correct the interference by one or more of the following measures:
—Reorient or relocate the receiving antenna.

—Increase the separation between the equipment and receiver.

—Connect the equipment into an outlet on a circuit different from that to which the receiver is connected.

—Consult the dealer or an experienced radio/TV technician for help.

MODIFICATION: Any changes or modifications not expressly approved by the grantee of this device could void the user's authority to operate the device.

This device complies with part 15 of the FCC Rules. Operation is subject to the following two conditions:
(1) This device may not cause harmful interference, and
(2) This device must accept any interference received, including interference that may cause undesired operation.

IC :

-English:

This device complies with Industry Canada RSS standard(s). Operation is subject to the following two conditions: (1) this device may not cause interference, and (2) this device must accept any interference ,including interference that may cause undesired operation of the device.

2. Changes or modifications not expressly approved by the party responsible for compliance could void the user's authority to operate the equipment.

-French:

Leprésent appareil est conforme aux CNR d'Industrie Canada applicable aux appareils radio

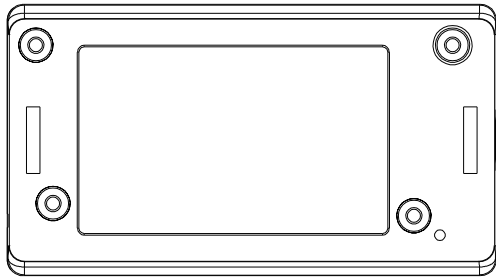
Exempts de licence. L'exploitation est autorisée aux deux conditions suivantes :

(1) l'appareil ne doit pas produire de brouillage, et (2) l'utilisateur de l'appareil doit accepter tout brouillage e radioélectrique subi, meme si le brouillage est susceptible d'en compromettre le fonctionnement."I.

Product introduction



One motor maximum can store 10 channels,over 10 channels,if still need add new channels,it will be repeating covered in turn from second channel.



Functional features:

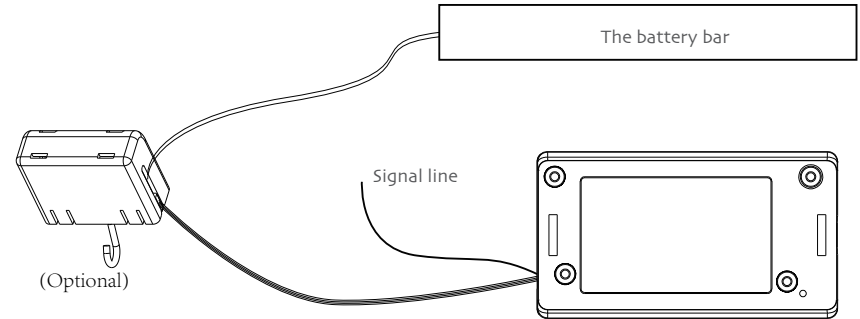
- Electronic Limit
 - Stall Protection
 - Program Button
 - Solar Charging
 - Reset to Factor Mode
 - Unpair Single Emittert
- Switch Direction
 - Built-in Receiver
 - Jog & Tilt
 - Preferred Stop Position
 - Low Power Consumption, Suitable for External Battery Power



Parameters(More models and parameters are subject to the nameplate)

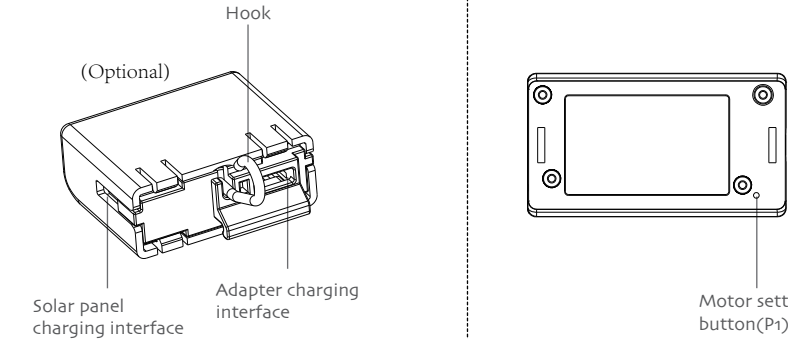
Type	MT01-4001-069001
Rated Torque(N.m)	0.6N.m
Rated Speed(RPM)	10RPM
Rated Voltage(V)	8.4V
Rated Current(A)	0.54A
Rated Power(W)	5W
Emission Frequency(MHz)	433.925MHz

Connection mode

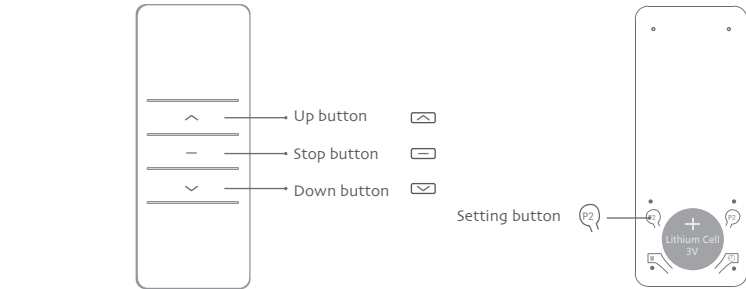


Note: it can be used with hook controller and battery rod, or only with battery or adapter.

Button specification



Note: The left and right rotation of the hook controls the motor to reverse and the centering motor of the hook stops.



Operation note



Please read the following precautions before use:

1. Not operating under low voltage motors:

①When the power supply voltage is lower than 6.5V, the motor stops running, and it can not start until the voltage exceeds 6.8V.

②When the power supply voltage is lower than 7.2V, the motor runs continuously and the buzzer will beep 10 times.

③When the power supply voltage is lower than 6.2V, the motor stops the buzzer beeping, and the voltage can be started only when the voltage is greater than 6.5V.
2. Operating :

①The valid interval of the emitter button is 10s,the emitter will quit the set after 10s;

②The motor will run or beep for hint,please do the next step after the hint.
3. Set limit position :

①After the up/down limit position setting,and the up/down limit position can't at the same position;

②After limit setting,with power off and memory function;

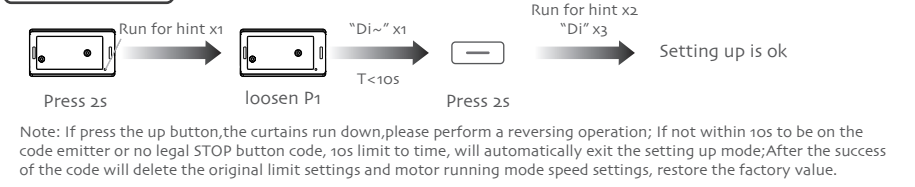
③Into the match-code status 2 minutes later, it will quit out the setting limits status automatically;

④It will delete every memory and restore the factory settings.
4. When the motor running without any operation, the maximum running time is 6 minutes,it will stop automatically.
5. If the emitter lost,please setting up again with new emitter.

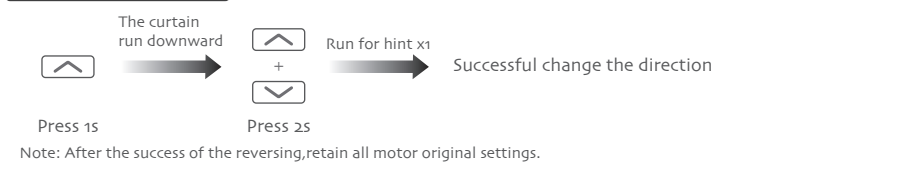


FACTORY MODE

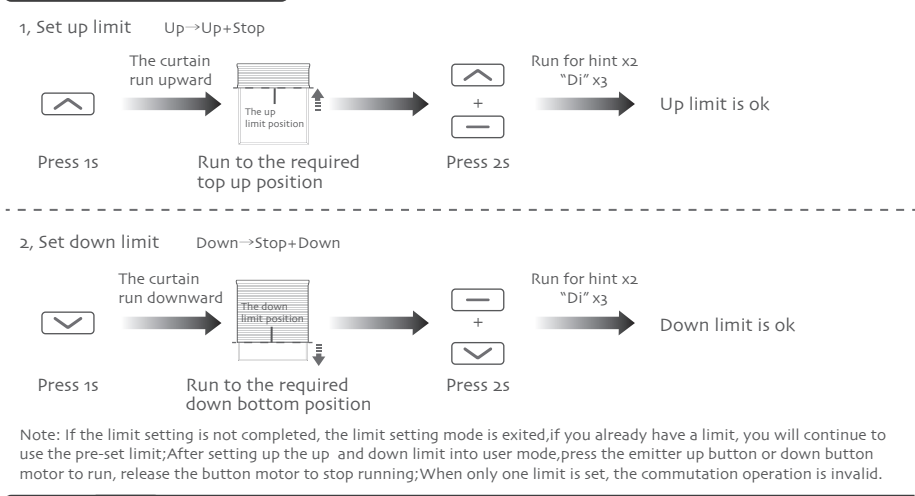
1 Setting up



2 Switch direction

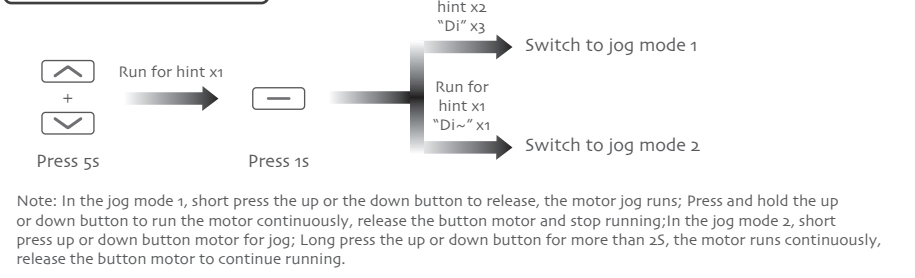


3 Limit position setting

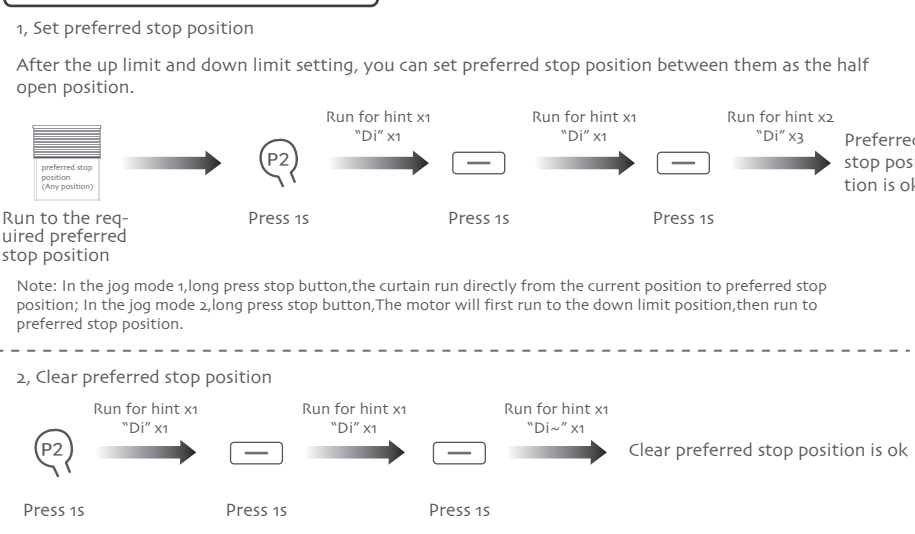


USER MODE

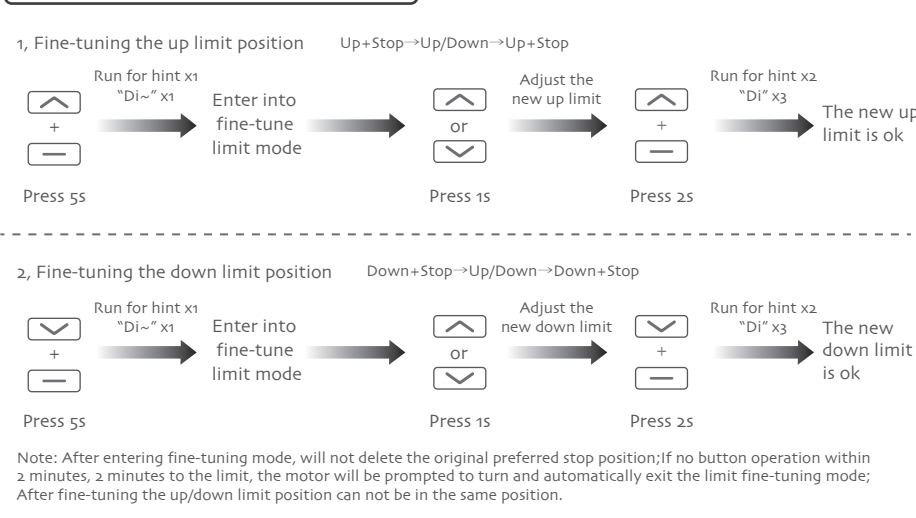
1 Jog mode switching



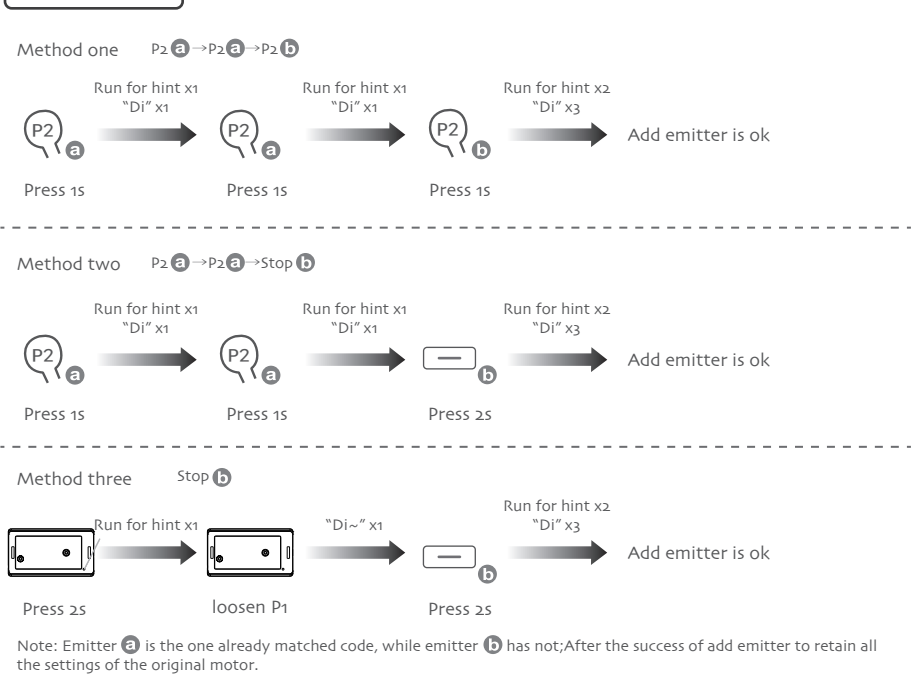
2 Preferred stop position setting



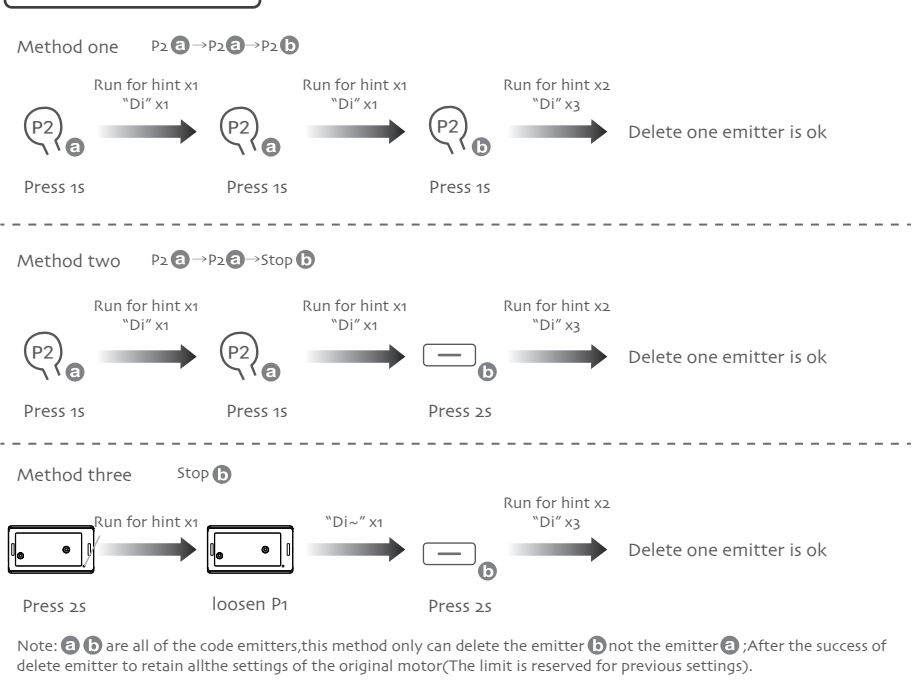
3 Fine-tuning up/down limit position



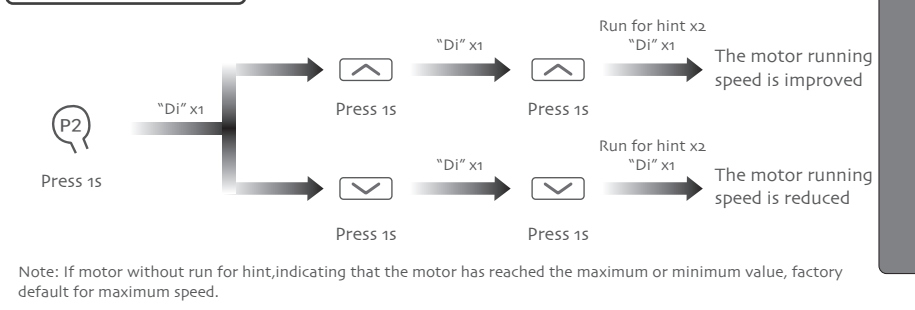
4 Add Emitter



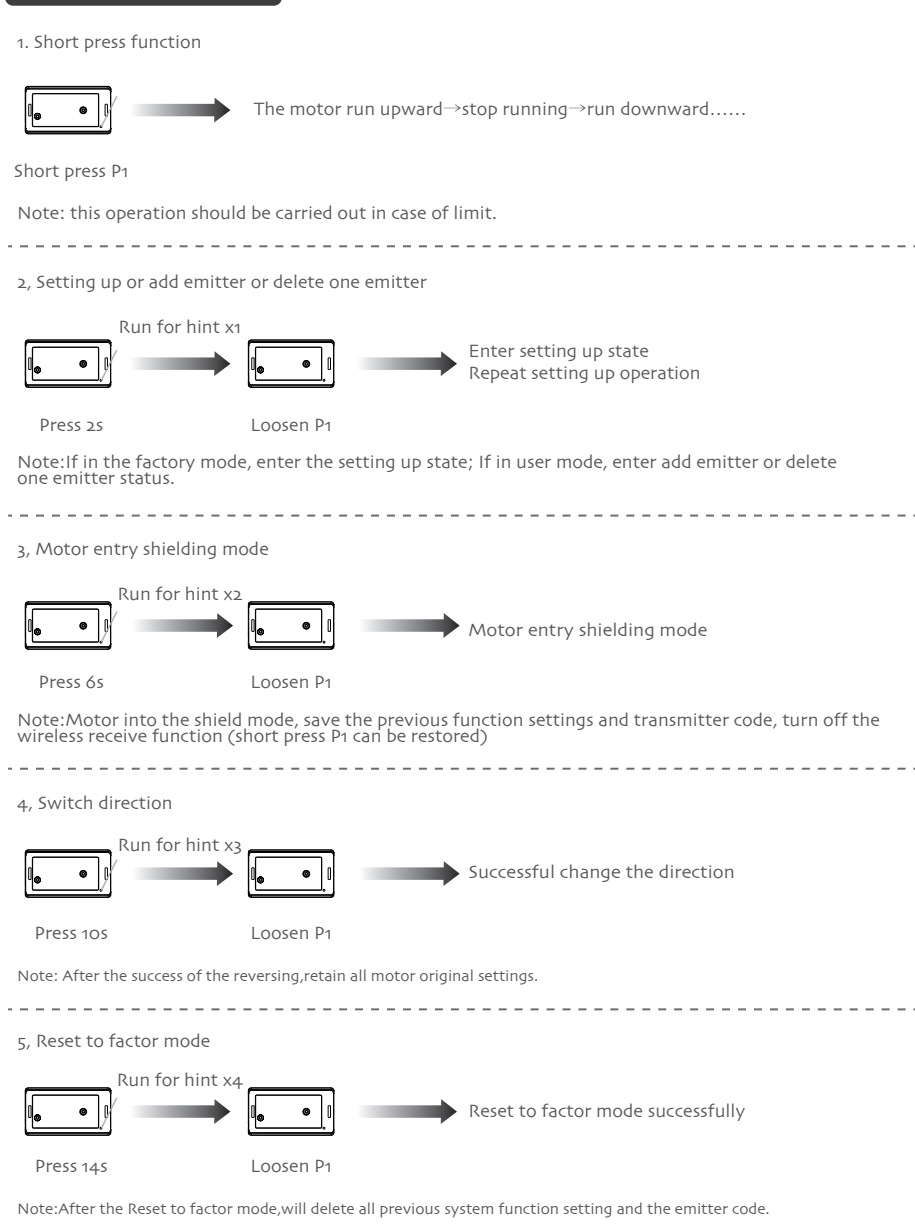
5 Delete one emitter



6 Speed Regulation



P1 BUTTON OPERATION



FAULT AND SOLUTION

PHENOMENON	REASON	PROCESSING METHOD
The motor is not running	a, he emitter is not matched. b, If press P1 button for a long time while with no reaction.May be the power is short-cirait or the cirailt board or the motor is broken.	a, Setting up the match code b, Contact after-sales service

User manual
AUTOMATE | Core Tilt Motor



(A-00)

MT01-4001-069001