

FIFINE W9

SMART WATCH



HK Suncon Ltd

Trade Mark: FIFINE

EUT: SMART WATCH

M/N: W9

Manufacturer:Hk Suncon Ltd.

Room1103A ,Jinhua building ,

Gaofeng road in Dalang,longhua new district ,

Baoan, Shenzhen ,China

FIFINE W9

SMART WATCH



HK Suncon Ltd

Trade Mark: FIFINE

EUT: SMART WATCH

M/N: W9

Manufacturer:Hk Suncon Ltd.

Room1103A ,Jinhua building ,

Gaofeng road in Dalang,longhua new district ,

Baoan, Shenzhen ,China

Structures

- ① Power button
- ② Home button
- ③ Camera
- ④ Touch Screen
- ⑤ Speaker
- ⑥ Antenna

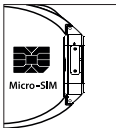
Noted:

Turn On: Long press power button 5-6 seconds.

Turn Off: Long press power button 5-6 seconds.



Structures



① insert SIM card

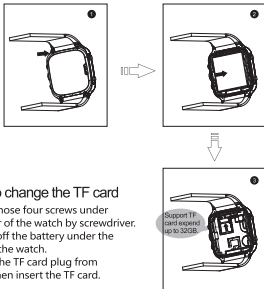
Tips: when you start to use this watch phone, please get things ready :
1 SIM card(size same as card for iPhone 4S), WIFI network,
1 smartphone with Android system.

Charging

Put watch into the charging case and plug cable to the micro USB port, please refer to photos below



TF card instruction



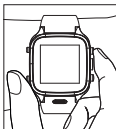
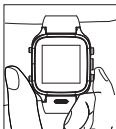
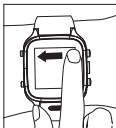
The steps to change the TF card

First, Take off those four screws under the black cover of the watch by screwdriver.

Second, Take off the battery under the black cover of the watch.

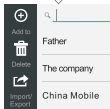
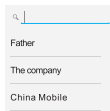
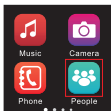
Thirdly, Slide the TF card plug from down to up, then insert the TF card.

Operating instructions



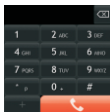
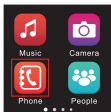
- ▣ Switch pages: slide to left or right
- ▣ Menu operation : slide from left edge to right
- ▣ Return operation: slide from right edge to left
- ▣ Button: top(1) is power button, bottom(2) is HOME button
- ▣ Screenshot : long press power button and home button at same time.
- ▣ Check /delete background running apps :
Long press HOME button , it will show background running apps, slide to left or right to delete them.

Contacts



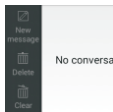
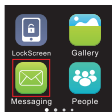
For first time use, please upload contacts. You can add contacts in SIM card, or set the same account. Press menu button on bottom to check details and manage contacts.

Phone



Make phone calls by keypad. Searching contacts by initial letters of their names, full name or phone number.

Messages



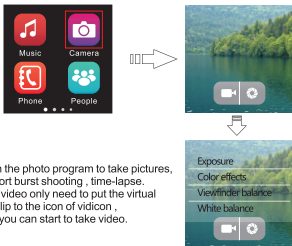
You can write to one or more person.
You can input words, photos, emoji,
contact informations, audio and video.
Long press messages to lock, forward,
copy and delete.

Music

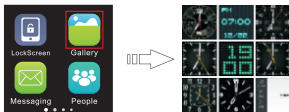


This watch supports music playing for downloaded songs.
If you want to listen songs online, please download music player APPs.
It supports various music playing modes by selecting titles, artists,
albums and songs lists with different sound effects available.

Take photo or Video



PHOTO



Keyboard



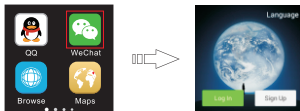
Press keyboard (Baidu keyboard defaulted) and switch to voice input, speak through it and it will be automatic identified as words with high accuracy. You can set keyboard by following steps "settings /personal /language and keyboard", or download a third-party keyboard.

APPs market



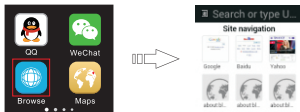
Open the market you will see many kinds of carefully selected Apps, which are related to sport, health ,social network,life, smart tools, entertainment as well as up-to-date Apps and highly recommended Apps. Anyway you will find your favored Apps and manage them.

SNS



Open SNS Apps such as Wechat ,Twitter ,
QQ and input account and password to log in.

Notifications



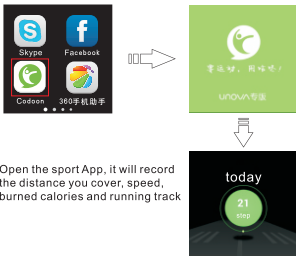
Double click or two-finger move to zoom the webpages,
either full screen or the defaulted display ratio.

Notifications



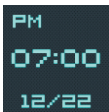
When there is call, messages or other updates, slide from up to down to check contents.
There is quick off/on button top at the notification column.
Slide to choose more off/on buttons to read or close the notifications

Sport



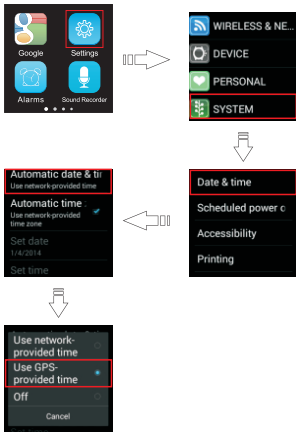
Open the sport App, it will record the distance you cover, speed, burned calories and running track

Choose the clock you like



After startup , select the dashclock , Choose the clock you like then setting.

Date and time



Open "settings-system-date and time",
You can click "set automatically" to use the time supported by
Internet or GPS,
Or close it and set manually

This equipment has been tested and found to comply with the limits for a Class B digital device, pursuant to part 15 of the FCC Rules. These limits are designed to provide reasonable protection against harmful interference in a residential installation. This equipment generates, uses and can radiate radio frequency energy and, if not installed and used in accordance with the instructions, may cause harmful interference to radio communications. However, there is no guarantee that interference will not occur in a particular installation. If this equipment does cause harmful interference to radio or television reception, which can be determined by turning the equipment off and on, the user is encouraged to try to correct the interference by one or more of the following measures:

- o Reorient or relocate the receiving antenna.
- o Increase the separation between the equipment and receiver.
- o Connect the equipment into an outlet on a circuit different from that to which the receiver is connected.
- o Consult the dealer or an experienced radio/TV technician for help.

Caution: Any changes or modifications to this device not explicitly approved by manufacturer could void your authority to operate this equipment.

This device complies with part 15 of the FCC Rules. Operation is subject to the following two conditions:

- (1) This device may not cause harmful interference, and
- (2) this device must accept any interference received, including interference that may cause undesired operation.

This SAMRT WATCH meets the government's requirements for exposure to radio waves. The guidelines are based on standards that were developed by independent scientific organizations through periodic and thorough evaluation of scientific studies. The standards include a substantial safety margin designed to assure the safety of all persons regardless of age or health.

FCC RF Exposure Information and Statement The SAR limit of USA (FCC) is 1.6 W/kg(1g)for head and 4.0W/kg(10g)for body averaged over one gram of tissue. Device types: SAMRT WATCH (FCC ID:2AGGL-W9) has also been tested against this SAR limit. The highest SAR value reported under this standard during product certification for use at the ear is 0.348W/kg(1g) and when properly worn on the body is 1.040W/kg(10g). This device was tested for typical body-worn operations with the back of the handset kept 00cm from the body. To maintain compliance with FCC RF exposure requirements, use accessories that maintain a 00cm separation distance between the user's body and the back of the handset. The use of belt clips, holsters and similar accessories should not contain metallic components in its assembly. The use of accessories that do not satisfy these requirements may not comply with FCC RF exposure requirements, and should be avoided.

This device was tested for typical body-worn operations. To comply with RF exposure requirements, a minimum separation distance of 0.0 cmmust be maintained between the user's body and the handset, including the antenna. Third-party belt-clips, holsters, and similar accessories used by this device should not contain any metallic components. Body-worn accessories that do not meet these requirements may not comply with RF exposure requirements and should be avoided. Use only the supplied or an approved antenna.