



TEST REPORT

Report No. : HST201509-3193-FCC

Product description: wireless transmitter

Model/Type : U286, U586, U886, U126, IM18,
IM28, U1000, U2000, U3000

Applicant's name: JUMBO INTERNATIONAL
DEVELOPMENT LIMITED





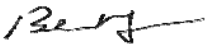
<p align="center">TEST REPORT</p> <p align="center">FCC Part 15.249: 2014</p> <p align="center">FCC ID: 2AGG2U586</p>		
Report Reference No.: HST201509-3193-FCC		
Tested by (+ signature):		Lemon Fu
Review by (+ signature):		Sandy Yu
Approved by (+ signature):		Robin Peng
Date of issue: Sep. 15, 2015		
Total number of pages: 40 Pages		
Testing Laboratory.....: I-Test Laboratory (Accredited by CNAS, Accredited Number: L4957) FCC- Registration No: 935596 Renewal on April. 19, 2012		
Address: 1-2 floor, South Block, Building A2 No3 Keyan Lu, Science City, Guangzhou, Guangdong, China		
Applicant's name : JUMBO INTERNATIONAL DEVELOPMENT LIMITED		
Address: RMS 1102-1103 11/F KOWLOON BLDG 555 NATHAN RD MONGKOK KL, HONG KONG		
Manufacturer's name : JUMBO INTERNATIONAL DEVELOPMENT LIMITED		
Address: RMS 1102-1103 11/F KOWLOON BLDG 555 NATHAN RD MONGKOK KL, HONG KONG		
Test specification.....: Entrusted testing		
Standard.....: FCC Part 15.249: 2014		
Non-standard test method.....: N/A		
Date of Sample Receive: Aug. 15, 2015		
Date of Test.....: Aug. 18, 2015 to Sep. 4, 2015		
Test item description.....: wireless transmitter		
Trade Mark.....: N/A		
Model/Type reference: U586		
Ratings: 3.0Vdc 2*AA Batteries		

TABLE OF CONTENT

	TEST REPORT	1
1	Test Summary	4
2	General Information.....	5
	2.1 Client Information	5
	2.2 General Description of E.U.T.	5
	2.3 Details of E.U.T.	5
	2.4 Description of Support Units.....	5
	2.5 Standards Applicable for Testing	5
	2.6 Test Location	6
	2.7 Deviation from Standards.....	6
	2.8 Abnormalities from Standard Conditions.....	6
3	Test Results	7
	3.1 Radiation Interference	7
	3.1.1 E.U.T. Operation	7
	3.1.2 Test Setup.....	7
	3.1.3 Test Procedure.....	8
	3.1.4 Measurement Data.....	9
	3.1.5 Radiated outside of the specified frequency bands	13
	3.1.6 Measurement Data for 15.249.d	15
	3.2 Occupied Bandwidth.....	24
	3.2.1 E.U.T. Operation	24
	3.2.2 Test Setup.....	24
	3.2.3 Test Procedure.....	24
	3.2.4 Measurement Data.....	25
4	Photographs	27
	4.1 Radiated Emission Test Setup.....	27
	4.2 EUT Constructional Details	29
	4.3 Antenna Photo.....	错误！未定义书签。
5	Equipments Used during Test.....	40

1 TEST SUMMARY

Test	Test Requirement	Test Method	Class / Severity	Result
Radiated Emission (9kHz to 25GHz)	FCC PART 15.249	ANSI C63.10:2013	In FCC PART 15.249	PASS
Occupied Bandwidth	FCC PART 15.215	ANSI C63.10:2013	In FCC PART 15.215	PASS
Conducted Emissions at Mains Terminals	FCC PART 15.207	ANSI C63.10: 2013: Clause 6.2	In FCC PART 15.207	N/A*

Note:

N/A: Not applicable, since the EUT was solely powered by batteries.

Remark:

Model: **U286, U586, U886, U126, IM18, IM28, U1000, U2000, U3000**

Only tested **U586**, since the other models listed above are electric identical with only difference being the model name and appearance (button's shape and location setting). "Location setting" means the plastic button may be set on different place.

♣

Channel	Frequency/ MHz
Lowest	902.3
Middle	914.5
Highest	927.7

The tests were carried out on the 3 samples with the typical frequency of lowest/ middle/ highest channels listed above.

2 GENERAL INFORMATION

2.1 Client Information

Applicant: JUMBO INTERNATIONAL DEVELOPMENT LIMITED
Address of Applicant: RMS 1102-1103 11/F KOWLOON BLDG 555 NATHAN RD
MONGKOK KL, HONG KONG

2.2 General Description of E.U.T.

EUT Name: wireless transmitter
Item No.: U286, U586, U886, U126, IM18, IM28, U1000, U2000, U3000
Serial No.: Not supplied by client

2.3 Details of E.U.T.

Power Supply: 3.0Vdc 2*AA Batteries
Main Function: Wireless microphone system with an associated receiver for transmitting voice.
Oscillating Frequency: 4MHz@Y1 for PLL, 12MHz@Y2 for MCU
Port: /
Frequency Range: 902.3 MHz to 927.7 MHz for all the models listed in the cover. 16 channels for each microphone.
Modulation: FM; Emission designator: 228KF3E
Occupied bandwidth (99 % BW): 228kHz
Antenna Number & Type: One & Fixed on PCB; Gained: 0 dBi; Impedance: 50-Ohm;
Antenna length: 15mm; Antenna min distance to the shell: 20 mm

2.4 Description of Support Units

/

2.5 Standards Applicable for Testing

The standard used was 47 CFR Part 15.249: 2014

The EUT belongs to low power communication device transmitter, and it's an unlicensed low power auxiliary device.

2.6 Test Location

I-Test Laboratory

Address: 1-2 floor, South Block, Building A2 No3 Keyan Lu, Science City, Guangzhou, Guangdong, China

Accredited by CNAS, Accredited Number: L4957

FCC- Registration No: 935596 Renewal on April. 19, 2012

2.7 Deviation from Standards

None.

2.8 Abnormalities from Standard Conditions

None.

3 TEST RESULTS

3.1 Radiation Interference

Test Requirement: FCC Part15.249, a) & FCC Part15.209
 Test Method: ANSI C63.10:2013
 Detector: Peak for pre-scan (The resolution bandwidth was 100 kHz and the video bandwidth was 300 kHz up to 1.0GHz and 1.0 MHz with a video BW of 3.0 MHz above 1.0GHz.)
 Average detector if maximised peak within 6dB of limit

3.1.1 E.U.T. Operation

Operating Environment:

Temperature: 20°C

Humidity:50% RH

Atmospheric Pressure: 103 kPa

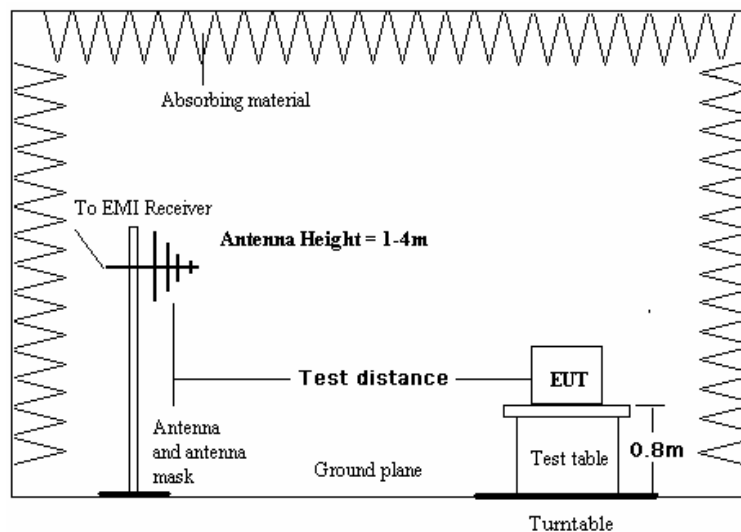
EUT Operation:

In the fundamental test, connecting the EUT to peripheral devices.

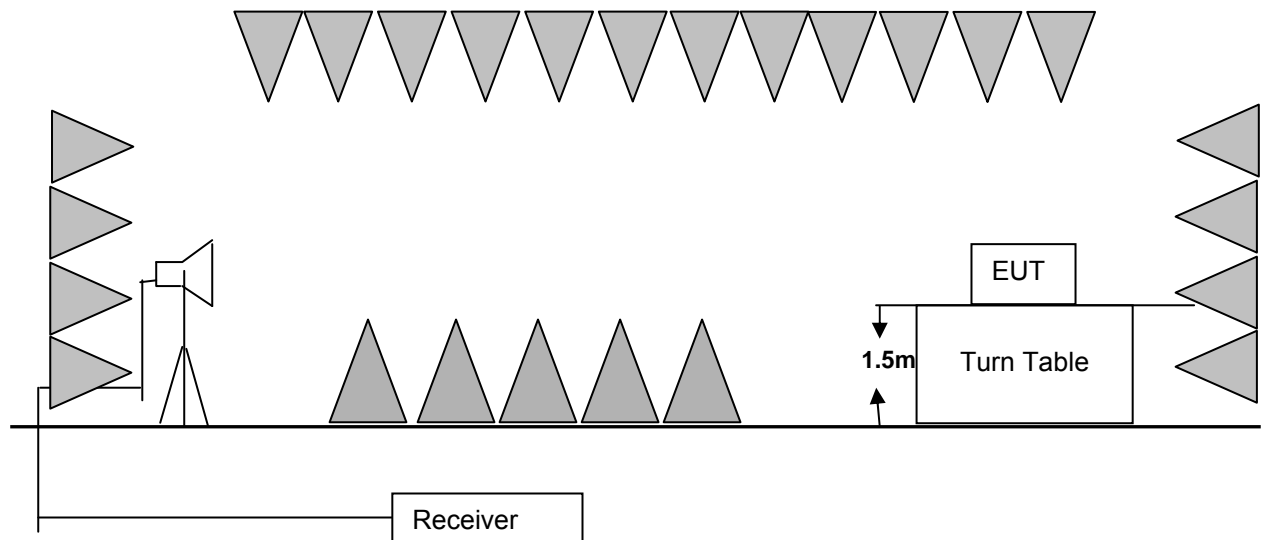
Test the EUT work normally in on mode during the whole test.

3.1.2 Test Setup

30MHz-1GHz emissions:



1 GHz to 40 GHz emissions:



3.1.3 Test Procedure

ANSI STANDARD C63.10-2013 6.5 Radiated emissions from unlicensed wireless devices in the frequency range of 30 MHz to 1000 MHz

An initial pre-scan was performed in the 3m chamber using the spectrum analyser in peak detection mode. Average measurements were conducted based on the peak sweep graph. When an emission was found, the table was rotated to produce the maximum signal strength. At this point, the antenna was raised and lowered from 1m to 4m. The antenna was placed in both the horizontal and vertical polarities. The EUT was measured for both the Horizontal and Vertical polarities and performed a pre-test three orthogonal planes and choose the worst case of X/ Y/ Z orthogonal planes for the final measurement.

3.1.4 Measurement Data

Copy from FCC Part 15.249.a)

(a) Except as provided in paragraph (b) of this section, the field strength of emissions from intentional radiators operated within these frequency bands shall comply with the following:

Fundamental	Field Strength	
Frequency	Fundamental	Harmonics
MHz	millivolts/meter(mV/m)	microvolts/meter(uV/m)
902 - 928	50	500
2400 - 2483.5	50	500
5725 - 5875	50	500
24000 - 24250	250	2500

Quasi-Peak measurement of carrier						
Frequency	Level		Transducer	Limit	Margin	
MHz	dBuV/m		dB	dBuV/m	dB	
	V	H			V	H
902.3 (L)	87.1	89.0	27.6	94	6.9	5.0
914.5 (M)	88.6	90.3	27.8	94	5.4	3.7
927.7 (H)	84.6	91.0	27.9	94	9.4	3.0
<p>Note:</p> <p>50mV/m (94dBuV/m) for QP limit in band (902MHz to 928MHz).</p> <p>The transducer factor = antenna factor + cable loss - preamplifier.</p> <p>The Level = Read level + transducer factor.</p> <p>H: Antenna polarization horizontal direction. V: Antenna polarization vertical direction.</p> <p>The EUT was measured for both the Horizontal and Vertical polarities and performed a pre-test three orthogonal planes and choose the worst case of X orthogonal plane for the final measurement.</p>						

Peak measurement of harmonics and spurious emission at lowest channel 902.3 MHz						
Frequency	Level		Transducer	Limit	Min. Margin	
MHz	dBuV/m		dB	dBuV/m	dB	
	V	H			V	H
2 nd 1804.6	40.1	40.2	27.4	74dB	33.9	33.8
3 rd 2706.9	43.5	43.1	27.9		30.5	30.9
4 th 3609.2	43.2	44.2	30.3		30.8	29.8
5 th 4511.5	43.6	44.4	34.1		30.4	29.6
6 th 5413.8	44.1	44.1	31.0		29.9	29.9
7 th 6316.1	44.5	44.4	35.1		29.5	29.6
8 th 7218.4	44.3	44.2	35.0		29.7	29.8
9 th 8120.7	44.6	45.2	36.0		29.4	28.8
10 th 9023.0	44.7	45.4	37.3		29.3	28.6

Average measurement of harmonics and spurious emission at lowest channel 902.3 MHz						
Frequency	Level		Transducer	Limit	Min. Margin	
MHz	dBuV/m		dB	dBuV/m	dB	
	V	H			V	H
2 nd 1804.6	32.2	33.4	27.4	54dB	21.8	20.6
3 rd 2706.9	31.8	33.2	27.9		22.2	20.8
4 th 3609.2	32.4	34.4	30.3		21.6	19.6
5 th 4511.5	33.2	34.3	34.1		20.8	19.7
6 th 5413.8	33.1	34.7	31.0		20.9	19.3
7 th 6316.1	34.0	34.4	35.1		20.0	19.6
8 th 7218.4	34.2	34.8	35.0		19.8	19.2
9 th 8120.7	34.5	35.2	36.0		19.5	18.8
10 th 9023.0	34.7	35.8	37.3		19.3	18.2

Peak measurement of harmonics and spurious emission at middle channel 914.5 MHz

Frequency		Level		Transducer	Limit	Min. Margin	
MHz		dBuV/m		dB	dBuV/m	dB	
		V	H			V	H
2 nd	1829.0	40.5	40.4	27.4	74dB	33.5	33.6
3 rd	2743.5	42.8	43.3	27.9		31.2	30.7
4 th	3658.0	43.2	44.4	30.3		30.8	29.6
5 th	4572.5	43.1	43.7	34.1		30.9	30.3
6 th	5487.0	44.0	44.4	31.0		30.0	29.6
7 th	6401.5	44.7	44.5	35.1		29.3	29.5
8 th	7316.0	44.2	44.9	35.0		29.8	29.1
9 th	8230.5	44.5	45.6	36.0		29.5	28.4
10 th	9145.0	44.1	45.8	37.3		29.9	28.2

Average measurement of harmonics and spurious emission at middle channel 914.5 MHz

Frequency		Level		Transducer	Limit	Min. Margin	
MHz		dBuV/m		dB	dBuV/m	dB	
		V	H			V	H
2 nd	1829.0	32.5	33.4	27.4	54dB	21.5	20.6
3 rd	2743.5	31.6	33.2	27.9		22.4	20.8
4 th	3658.0	32.1	34.5	30.3		21.9	19.5
5 th	4572.5	33.4	34.6	34.1		20.6	19.4
6 th	5487.0	33.3	34.8	31.0		20.7	19.2
7 th	6401.5	34.3	34.5	35.1		19.7	19.5
8 th	7316.0	34.3	34.5	35.0		19.7	19.5
9 th	8230.5	34.4	35.7	36.0		19.6	18.3
10 th	9145.0	34.3	35.5	37.3		19.7	18.5

Peak measurement of harmonics and spurious emission at highest channel 927.7MHz

Frequency		Level		Transducer	Limit	Min. Margin	
MHz		dBuV/m		dB	dBuV/m	dB	
		V	H			V	H
2 nd	1855.4	40.3	40.3	27.4	74dB	33.7	33.7
3 rd	2783.1	43.2	43.2	27.9		30.8	30.8
4 th	3710.8	43.6	44.3	30.3		30.4	29.7
5 th	4638.5	43.5	44.1	34.1		30.5	29.9
6 th	5566.2	44.1	44.3	31.0		29.9	29.7
7 th	6493.9	44.3	44.5	35.1		29.7	29.5
8 th	7421.6	44.3	44.6	35.0		29.7	29.4
9 th	8349.3	44.6	45.1	36.0		29.4	28.9
10 th	9277.0	44.4	45.6	37.3		29.6	28.4

Average measurement of harmonics and spurious emission at highest channel 927.7MHz

Frequency		Level		Transducer	Limit	Min. Margin	
MHz		dBuV/m		dB	dBuV/m	dB	
		V	H			V	H
2 nd	1855.4	32.4	33.7	27.4	54dB	21.6	20.3
3 rd	2783.1	31.7	33.2	27.9		22.3	20.8
4 th	3710.8	32.8	34.5	30.3		21.2	19.5
5 th	4638.5	33.4	34.5	34.1		20.6	19.5
6 th	5566.2	33.2	34.8	31.0		20.8	19.2
7 th	6493.9	34.2	34.1	35.1		19.8	19.9
8 th	7421.6	34.3	34.7	35.0		19.7	19.3
9 th	8349.3	34.5	35.5	36.0		19.5	18.5
10 th	9277.0	34.5	35.7	37.3		19.5	18.3

Note:

500 μ V/m (54dBuV/m) for AVG limit, and Peak limit= AVG limit + 20dB.

The transducer factor = antenna factor + cable loss - preamplifier.

The Level = Read level + transducer factor.

H: Antenna polarization horizontal direction. V: Antenna polarization vertical direction.

The EUT was measured for both the Horizontal and Vertical polarities and performed a pre-test three orthogonal planes and choose the worst case of X orthogonal plane for the final measurement.

Note:

The EUT's transmitting frequency range belonged to 902MHz to 928 MHz, and it is complied with the requirements of FCC Part 15.249.a).

The EUT was measured for both the Horizontal and Vertical polarities and performed a pre-test three orthogonal planes and choose the worst case of X orthogonal plane for the final measurement.

3.1.5 Radiated outside of the specified frequency bands

Copy from FCC Part 15.249.d)

(d) Emissions radiated outside of the specified frequency bands, except for harmonics, shall be attenuated by at least 50 dB below the level of the fundamental or to the general radiated emission limits in Section 15.209, whichever is the lesser attenuation.

Copy from FCC Part 15.209: Radiated emission limits, general requirements

(a) Except as provided elsewhere in this Subpart, the emissions from an intentional radiator shall not exceed the field strength levels specified in the following table:

Frequency MHz	Field Strength microvolts/meter(uV/m)	Measurement Distance (meters)
0.009 - 0.490	2400/F(kHz)	300
0.490 - 1.705	24000/F(kHz)	30
1.705 - 30.0	30	30
30 - 88	100 **	3
88 - 216	150 **	3
216 - 960	200 **	3
Above 960	500	3

** Except as provided in paragraph (g), fundamental emissions from intentional radiators operating under this Section shall not be located in the frequency bands 54-72 MHz, 76-88 MHz, 174-216 MHz or 470-806 MHz. However, operation within these frequency bands is permitted under other sections of this Part, e.g., Sections 15.231 and 15.241.

(d) The emission limits shown in the above table are based on measurements employing a CISPR quasi-peak detector except for the frequency bands 9-90 kHz, 110-490 kHz and above 1000 MHz. Radiated emission limits in these three bands are based on measurements employing an average detector.

Note:

Since the fundamental emissions peak and average values are shown on section 6.1.4 of this report, the general radiated emission limits in Section 15.209 is the lesser attenuation.

Limits for the frequency bands of 902 M - 928 MHz

Frequency	FCC Part 15.209 Radiated limits	
MHz	dBuV/m@3m	
	QP	AVG
30 - 88	40	/
88 - 216	43.5	/
216 - 960	46	/
960 - 1000	54	/
Above 1000	74(PK)	54

Frequency	15.249.d) limits	
MHz	dBuV/m@3m	
	QP	AVG
30 - 88	40	/
88 - 216	43.5	/
216 - 902	46	/
928-960	46	/
960 - 1000	54	/
1000-9280	74(PK)	54

Remark:

1. RF line voltage (dBuV)= 20 log RF line voltage (uV)
2. In the above table, the tighter limit applies at the band edges.
3. Distance refers to the distance in meters between the measuring instrument antenna and the closed point of any part of the device or system.

3.1.6 Measurement Data for 15.249.d

Test the EUT work normally in transmitting mode in mains.

1) 9kHz~30MHz Test result

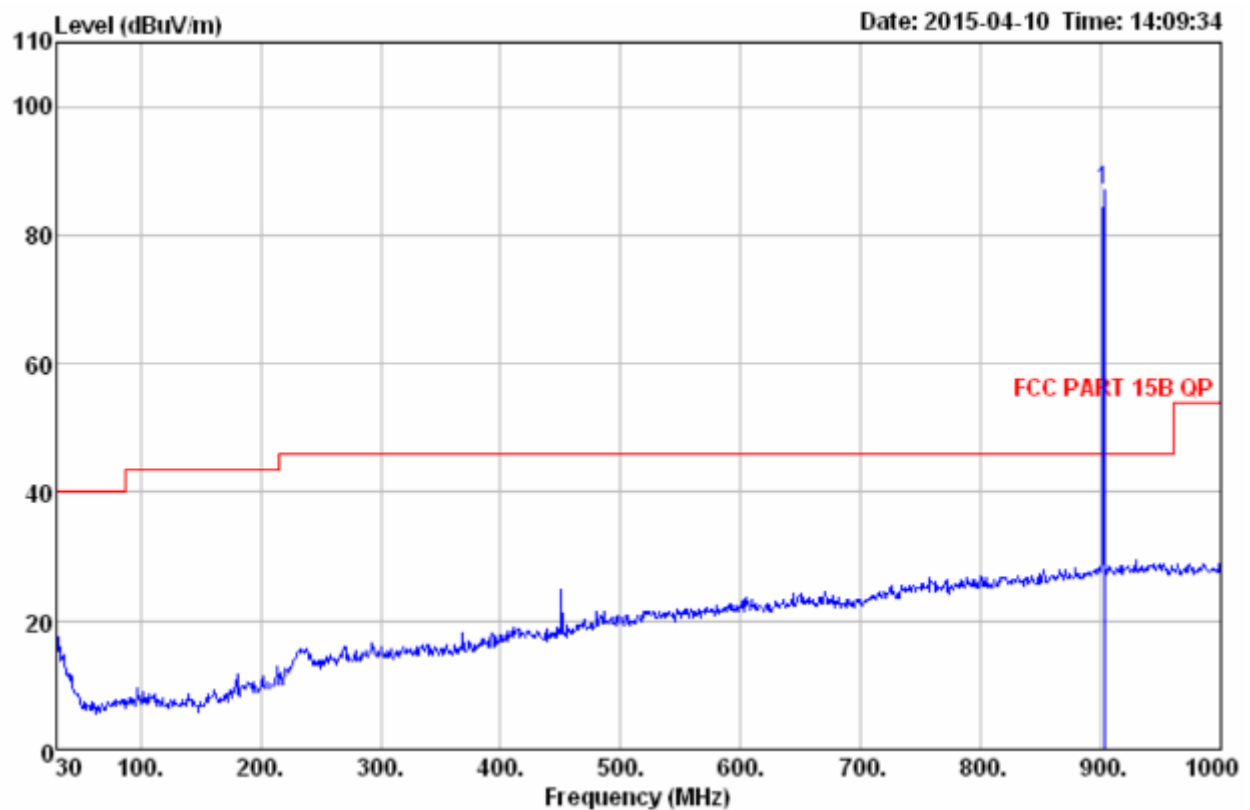
The Low frequency, which started from 9kHz to 30MHz, was pre-scanned and the result which was 20dB lower than the limit line per 15.31(o) was not report.

2) 30 MHz~1 GHz Spurious Emissions. Quasi-Peak Measurement

Test curves (with the Quasi-peak measurement and QP limit), 30M-1GHz, Horizontal & Vertical:

lowest channel 902.3MHz

Horizontal



Quasi-peak measurement

Frequency MHz	Level dBuV/m	Transducer dB	Limit dBuV/m	Margin dB
30.0	17.3	17.9	40	22.7
184.2	16.6	8.9	43.5	26.9
447.4	24.4	16.6	46	21.6
860.1*	29.4	23.0	46	16.6
936.2*	29.8	24.2	46	16.2
972.6	29.0	23.9	54	25.0

Note:

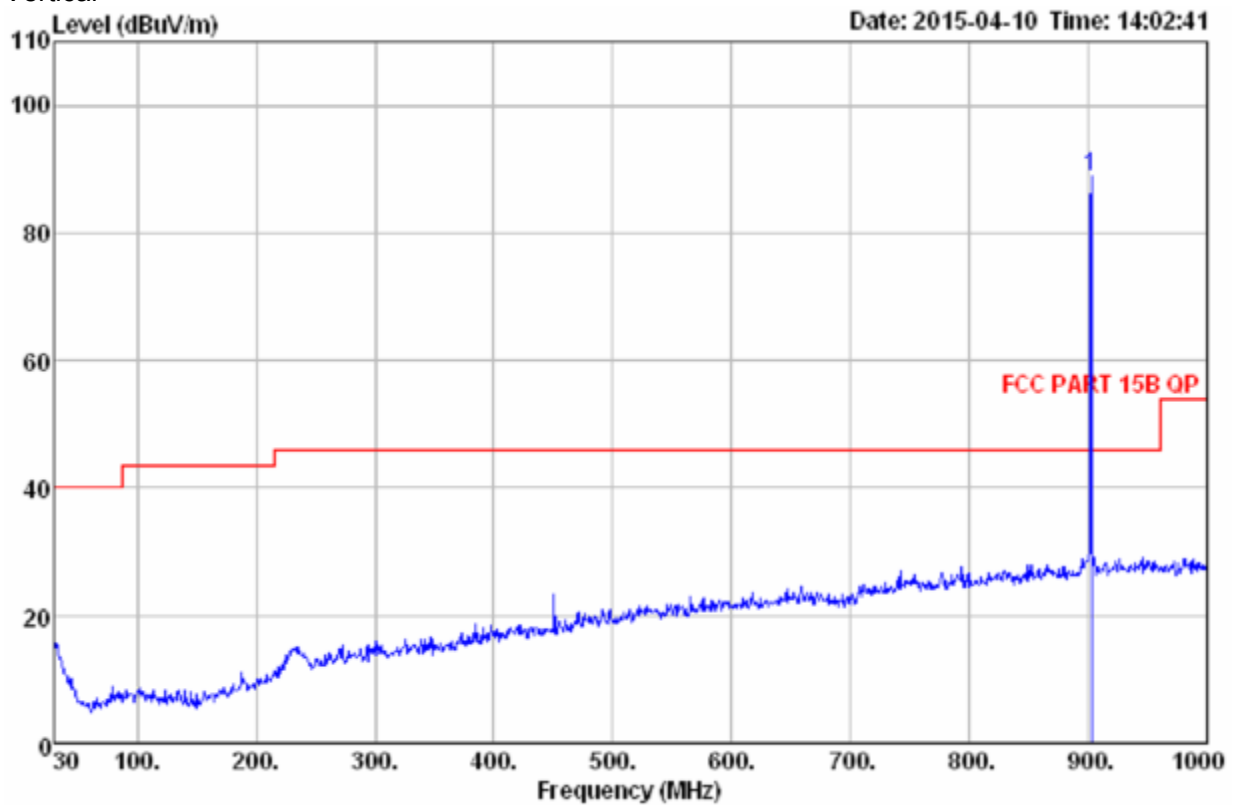
The transducer factor includes antenna factor and cable loss.

* means the max Quasi peak value for band-edge (frequency range of 802 MHz to 902MHz, except for harmonics) is the plot measurement at 860.1 MHz.

* means the max Quasi peak value for band-edge (frequency range of 928 MHz to 1000 MHz, except for harmonics) is the plot measurement at 936.2 MHz.

lowest channel 902.3MHz

Vertical



Quasi-peak measurement

Frequency	Level	Transducer	Limit	Margin
MHz	dBuV/m	dB	dBuV/m	dB
30.0	16.5	17.9	40	23.5
184.1	13.4	8.9	43.5	30.1
444.2	22.4	18.8	46	23.6
900.4*	30.5	23.9	46	15.5
935.2*	30.5	24.2	46	15.5
981.7	30.3	23.7	54	23.7

Note:

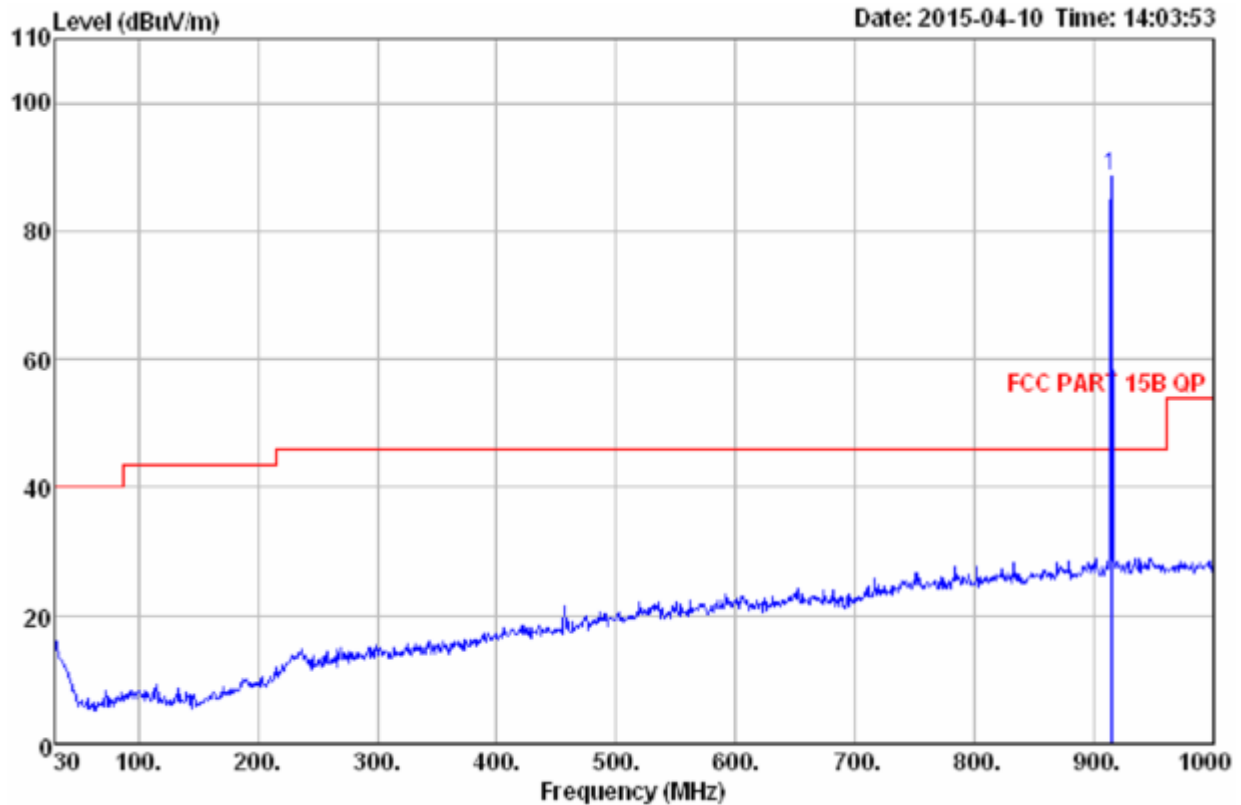
The transducer factor includes antenna factor and cable loss.

* means the max Quasi peak value for band-edge (frequency range of 802 MHz to 902MHz, except for harmonics) is the plot measurement at 900.4 MHz.

* means the max Quasi peak value for band-edge (frequency range of 928 MHz to 1000 MHz, except for harmonics) is the plot measurement at 935.2 MHz.

middle channel 914.5MHz

Horizontal



Quasi-peak measurement

Frequency	Level	Transducer	Limit	Margin
MHz	dBuV/m	dB	dBuV/m	dB
30.0	17.1	17.9	40	22.9
188.1	13.6	8.9	43.5	29.9
447.2	21.5	16.6	46	24.5
854.1*	29.1	23.0	46	16.9
935.3*	29.7	24.2	46	16.3
972.8	29.1	23.9	54	24.9

Note:

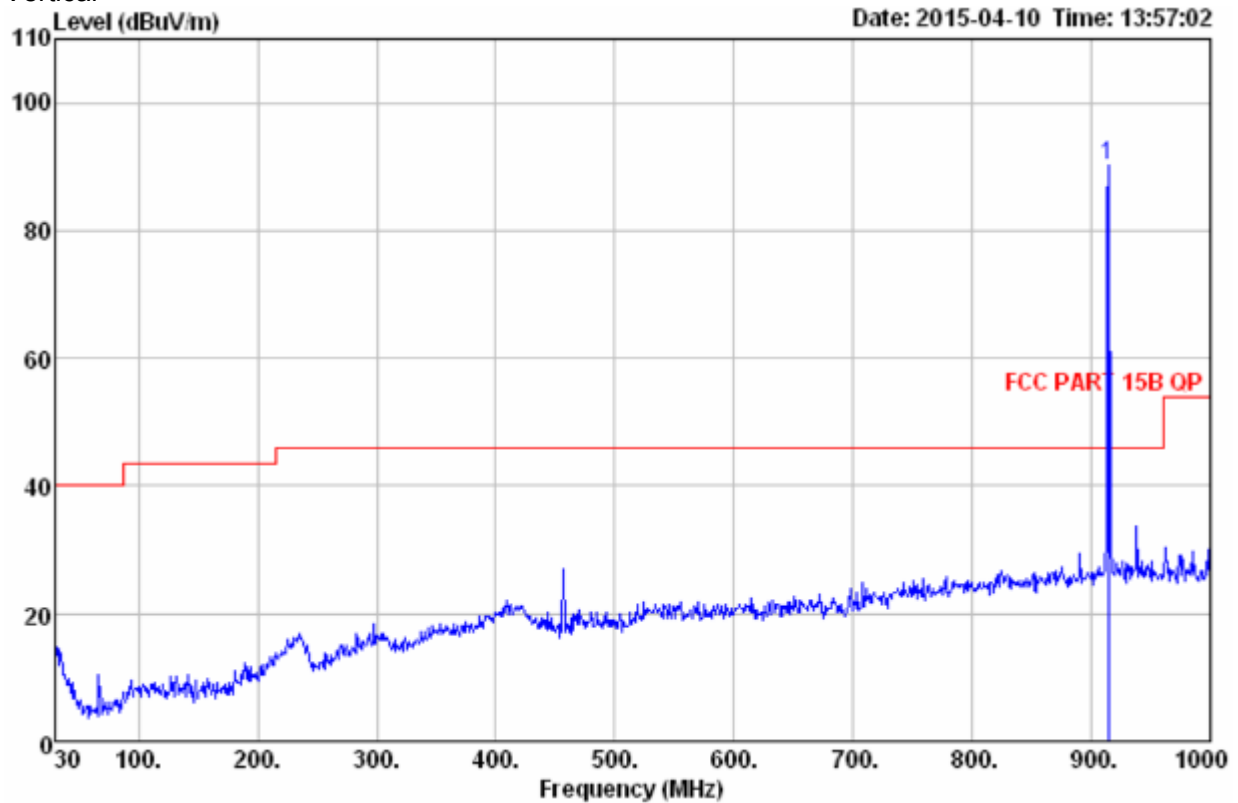
The transducer factor includes antenna factor and cable loss.

* means the max Quasi peak value for band-edge (frequency range of 802 MHz to 902MHz, except for harmonics) is the plot measurement at 854.1 MHz.

* means the max Quasi peak value for band-edge (frequency range of 928 MHz to 1000 MHz, except for harmonics) is the plot measurement at 972.8 MHz.

middle channel 914.5MHz

Vertical



Quasi-peak measurement

Frequency MHz	Level dBuV/m	Transducer dB	Limit dBuV/m	Margin dB
30.0	16.8	17.9	40	23.2
184.3	13.8	8.9	43.5	29.7
448.3	26.5	18.8	46	19.5
880.4*	30.3	23.9	46	15.7
937.2*	34.5	24.2	46	11.5
967.7	31.7	23.7	54	22.3

Note:

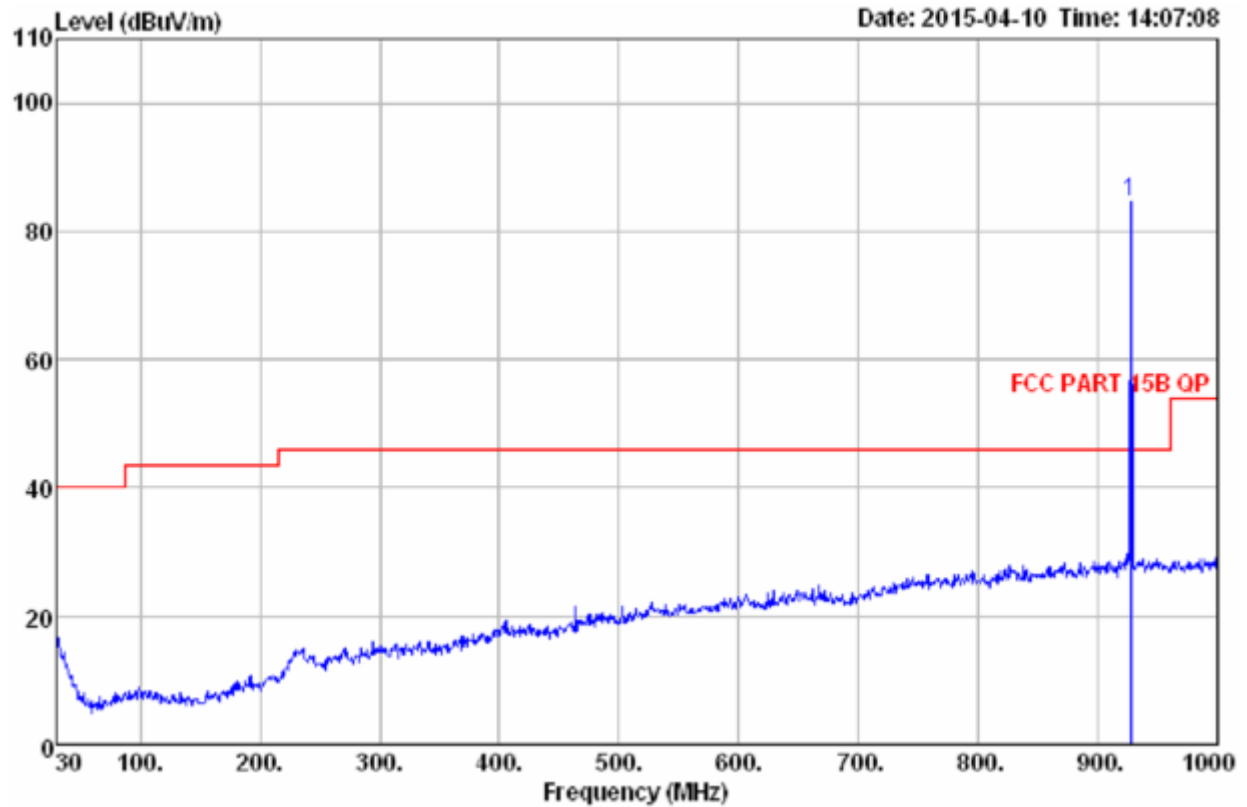
The transducer factor includes antenna factor and cable loss.

* means the max Quasi peak value for band-edge (frequency range of 802 MHz to 902MHz, except for harmonics) is the plot measurement at 880.4 MHz.

* means the max Quasi peak value for band-edge (frequency range of 928 MHz to 1000 MHz, except for harmonics) is the plot measurement at 937.2 MHz.

highest channel 927.7MHz

Horizontal



Quasi-peak measurement

Frequency	Level	Transducer	Limit	Margin
MHz	dBuV/m	dB	dBuV/m	dB
30.0	17.4	17.9	40	22.6
187.3	13.6	8.9	43.5	29.9
449.2	21.3	16.6	46	24.7
873.1*	29.0	23.0	46	17.0
936.3*	29.3	24.2	46	16.7
975.2	29.1	23.9	54	24.9

Note:

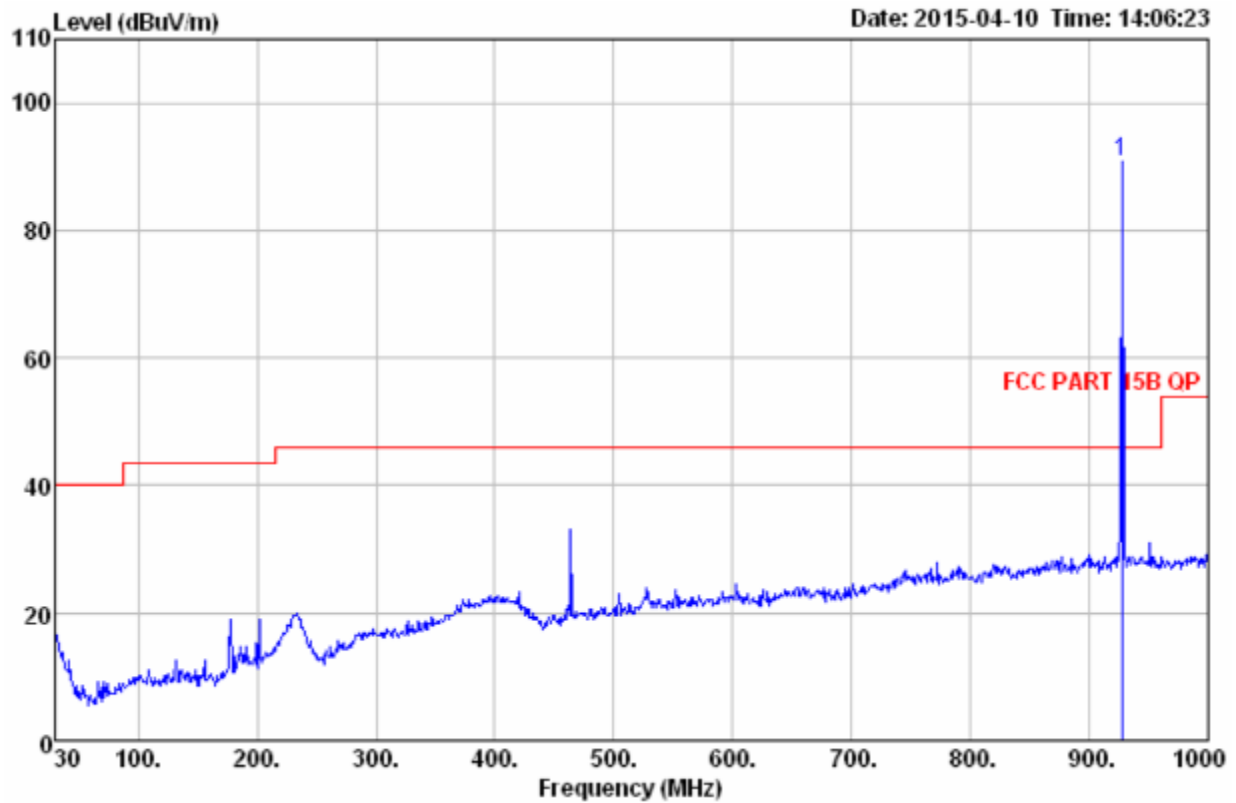
The transducer factor includes antenna factor and cable loss.

* means the max Quasi peak value for band-edge (frequency range of 802 MHz to 902MHz, except for harmonics) is the plot measurement at 873.1 MHz.

* means the max Quasi peak value for band-edge (frequency range of 928 MHz to 1000 MHz, except for harmonics) is the plot measurement at 936.3 MHz.

highest channel 927.7MHz

Vertical



Quasi-peak measurement

Frequency	Level	Transducer	Limit	Margin
MHz	dBuV/m	dB	dBuV/m	dB
30.0	17.1	17.9	40	22.9
182.1	18.4	8.9	43.5	25.1
453.5	31.2	18.8	46	14.8
900.2*	30.2	23.9	46	15.8
947.2*	30.8	24.2	46	15.2
978.7	29.3	23.7	54	24.7

Note:

The transducer factor includes antenna factor and cable loss.

* means the max Quasi peak value for band-edge (frequency range of 802 MHz to 902MHz, except for harmonics) is the plot measurement at 900.2 MHz.

* means the max Quasi peak value for band-edge (frequency range of 928 MHz to 1000 MHz, except for harmonics) is the plot measurement at 947.2 MHz.

3) 1 GHz~9.30 GHz Spurious Emissions .Average & PK Measurement

Horizontal & Vertical:

Average measurement at lowest channel: 902.3 MHz

Frequency	Level		Transducer	Limit	Margin	
GHz	dBuV/m		dB	dBuV/m	dB	
	Horizontal	Vertical			Horizontal	Vertical
1.218	32.3	33.6	24.8	54	21.7	20.4
2.393	31.1	33.6	26.6		22.9	20.4
2.562	32.3	34.2	26.8		21.7	19.8
5.243	33.3	34.6	33.1		20.7	19.4
7.458	33.2	34.9	35.9		20.8	19.1
9.217	34.1	34.6	37.5		19.9	19.4
Note: The transducer factor includes antenna factor and cable loss.						

Peak measurement at lowest channel: 902.3 MHz

Frequency	Level		Transducer	Limit	Margin	
GHz	dBuV/m		dB	dBuV/m	dB	
	Horizontal	Vertical			Horizontal	Vertical
1.218	40.6	40.5	24.8	74	33.4	33.5
2.393	43.1	43.7	26.6		30.9	30.3
2.562	43.4	44.8	26.8		30.6	29.2
5.243	43.2	44.8	33.1		30.8	29.2
7.458	44.3	44.7	35.9		29.7	29.3
9.217	44.4	44.7	37.5		29.6	29.3
Note: The transducer factor includes antenna factor and cable loss.						

Average measurement at middle channel: 914.5 MHz

Frequency	Level		Transducer	Limit	Margin	
GHz	dBuV/m		dB	dBuV/m	dB	
	Horizontal	Vertical			Horizontal	Vertical
1.222	32.4	33.5	24.8	54	21.6	20.5
2.391	31.2	33.4	26.6		22.8	20.6
2.614	32.5	34.4	26.8		21.5	19.6
5.158	33.1	34.5	33.1		20.9	19.5
7.462	33.3	34.8	35.9		20.7	19.2
9.168	32.4	33.5	37.5		19.9	19.4
Note: The transducer factor includes antenna factor and cable loss.						

Peak measurement at middle channel: 914.5 MHz

Peak Measurement at Middle Channel: 0.1 Hz BW						
Frequency	Level		Transducer	Limit	Margin	
GHz	dBuV/m		dB	dBuV/m	dB	
	Horizontal	Vertical			Horizontal	Vertical
1.222	40.3	40.4	24.8	74	33.7	33.6
2.391	43.2	43.5	26.6		30.8	30.5
2.614	43.1	44.8	26.8		30.9	29.2
5.158	43.2	44.7	33.1		30.8	29.3
7.462	44.2	44.6	35.9		29.8	29.4
9.168	44.3	44.6	37.5		29.7	29.4
Note: The transducer factor includes antenna factor and cable loss.						

Average measurement at highest channel: 927.7 MHz

Frequency	Level		Transducer	Limit	Margin	
GHz	dBuV/m		dB	dBuV/m	dB	
	Horizontal	Vertical			Horizontal	Vertical
1.242	32.4	33.2	24.8	54	21.6	20.8
2.391	31.5	33.3	26.6		22.5	20.7
2.612	32.5	34.1	26.8		21.5	19.9
5.324	33.6	34.4	33.1		20.4	19.6
7.462	33.4	34.5	35.9		20.6	19.5
9.266	34.2	34.5	37.5		19.8	19.5
Note: The transducer factor includes antenna factor and cable loss.						

Peak measurement at highest channel: 927.7 MHz

Frequency	Level		Transducer	Limit	Margin	
GHz	dBuV/m		dB	dBuV/m	dB	
	Horizontal	Vertical			Horizontal	Vertical
1.242	40.6	40.9	24.8	74	33.4	33.1
2.391	43.2	43.7	26.6		30.8	30.3
2.612	43.1	44.9	26.8		30.9	29.1
5.324	43.3	44.8	33.1		30.7	29.2
7.462	44.5	44.8	35.9		29.5	29.2
9.266	44.4	44.8	37.5		29.6	29.2
Note: The transducer factor includes antenna factor and cable loss.						

Note:

The EUT's transmitting frequency range belonged to 902MHz to 928 MHz, and it is complied with the requirements of FCC Part 15.249.d).

The EUT was measured for both the Horizontal and Vertical polarities and performed a pre-test three orthogonal planes and choose the worst case of X orthogonal plane for the final measurement.

3.2 Occupied Bandwidth

Test Requirement: FCC Part15.215
 Test Method: ANSI C63.10: 2013
 Detector: Peak for scan (The resolution bandwidth was 30kHz and the video bandwidth was 10kHz, span was 2MHz)
 maximised peak hold

3.2.1 E.U.T. Operation

Operating Environment:

Temperature: 25°C

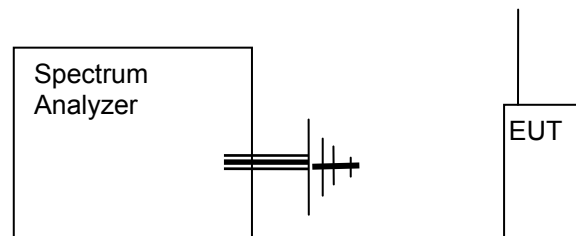
Humidity:45% RH

Atmospheric Pressure: 1020mBar

EUT Operation:

Pre-test the EUT with 1k to 20kHz sine wave signal input(level: 0.3 Vp-p). And the max 99%BW was measured as the EUT with 20 kHz sine wave signal input.

3.2.2 Test Setup



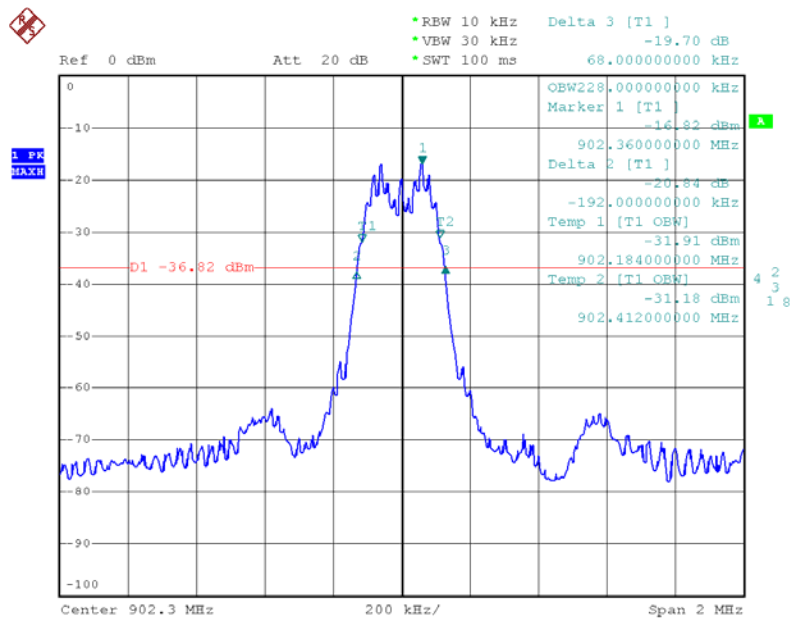
3.2.3 Test Procedure

ANSI STANDARD C63.10-2013 6.9 Occupied bandwidth tests:

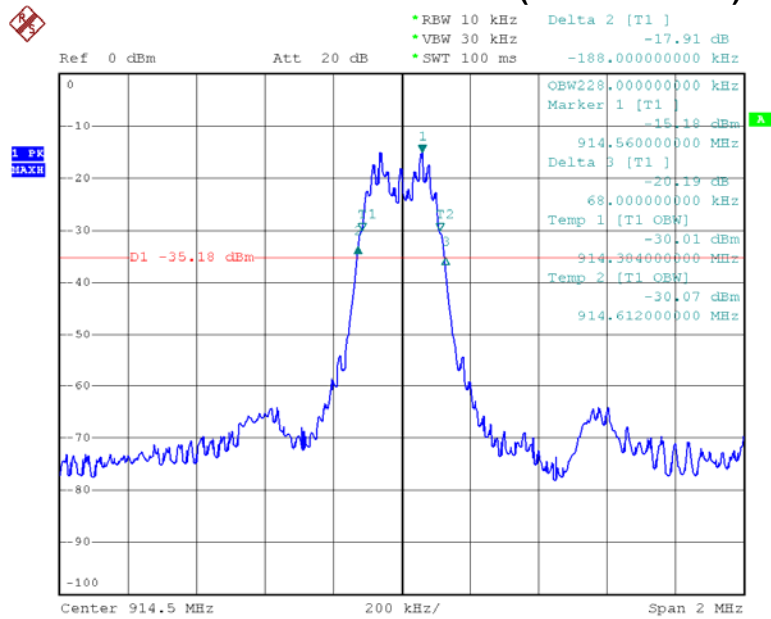
An initial pre-scan was performed in the 3m chamber using the spectrum analyzer in peak detection mode. Average measurements were conducted based on the peak sweep graph. When an emission was found, the table was rotated to produce the maximum signal strength. At this point, the antenna was raised and lowered from 1m to 4m. The antenna was placed in both the horizontal and vertical polarities.

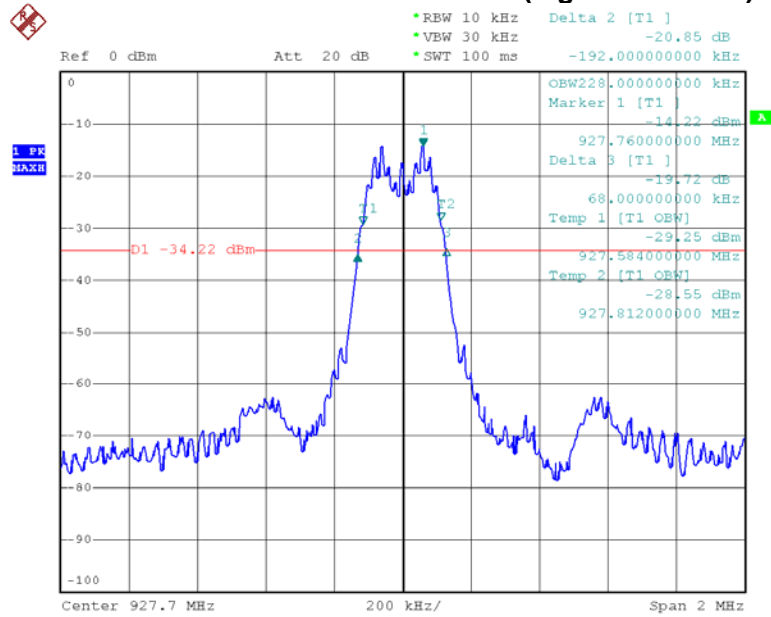
3.2.4 Measurement Data
Test for the EUT with switch ON. Input with 20 kHz AF, 50% modulation + 16dB.

Maximum Peak hold measurement for 902.3 MHz (lowest channel)



Maximum Peak hold measurement for 914.5 MHz (middle channel)



Maximum Peak hold measurement for 927.7 MHz (highest channel)

Frequency/ MHz	$\Delta FL-$ / kHz	$\Delta FL+$ / kHz	-20dB Bandwidth/ kHz	Occupied Bandwidth (99% of total power)/ kHz
902.3 (lowest)	-192	68	260	228
914.5 (middle)	-188	68	256	228
927.7 (highest)	-192	68	260	228

4 PHOTOGRAPHS

4.1 Radiated Emission Test Setup

9kHz - 30MHz



30MHz – 1GHz



1GHz – 9.3GHz



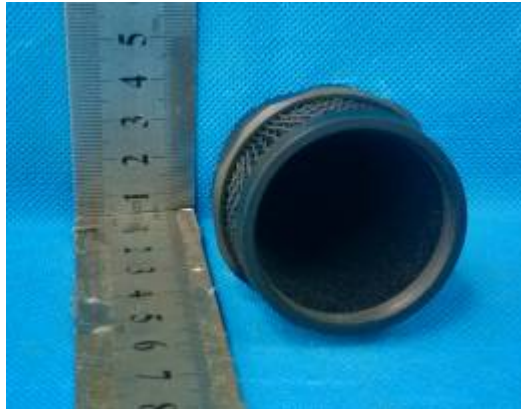
4.2 EUT Constructional Details

U586

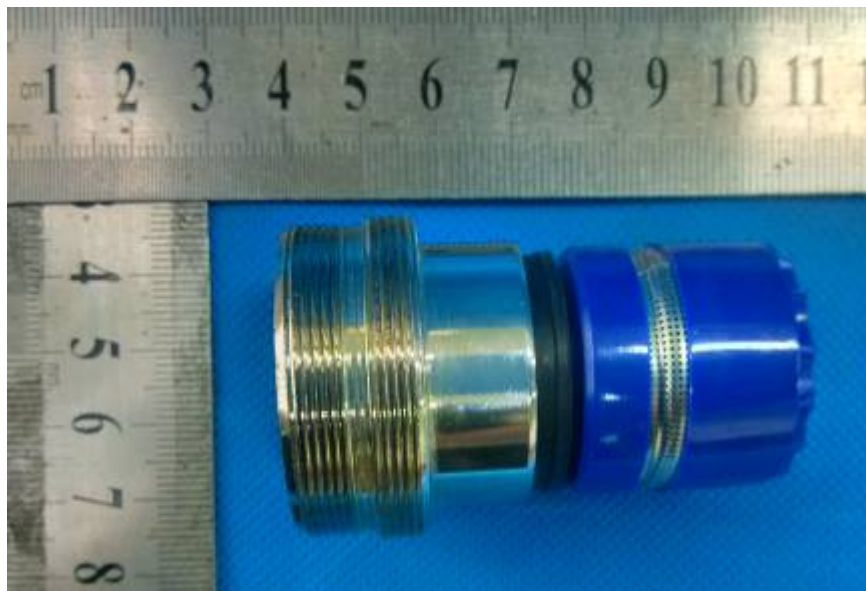
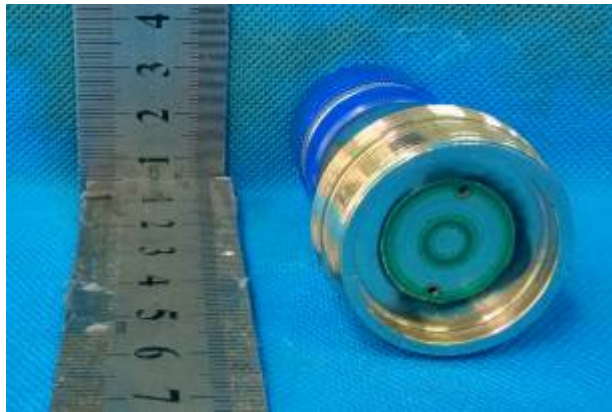
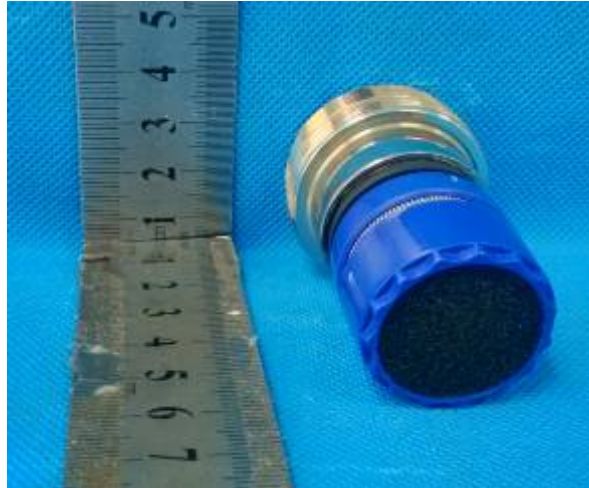




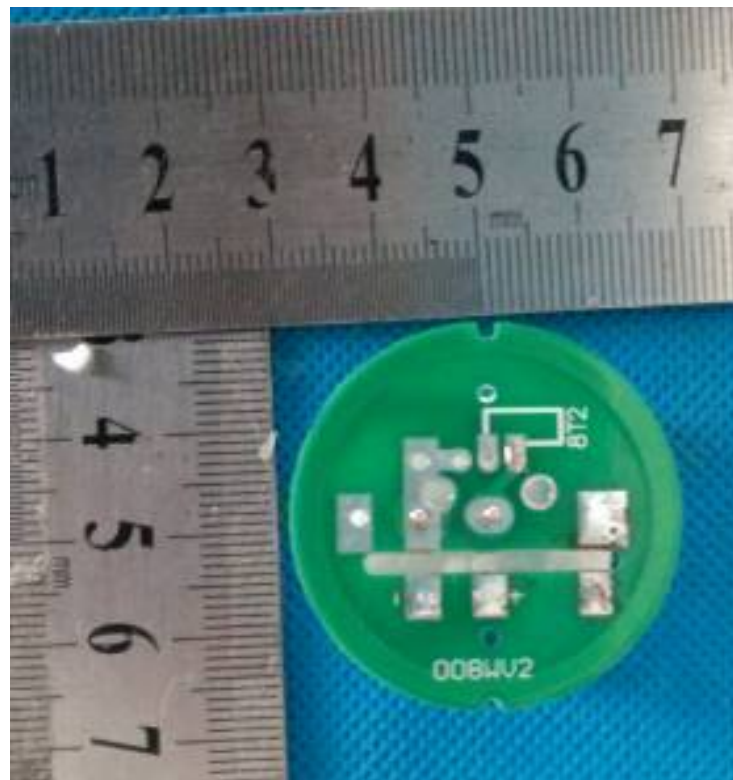
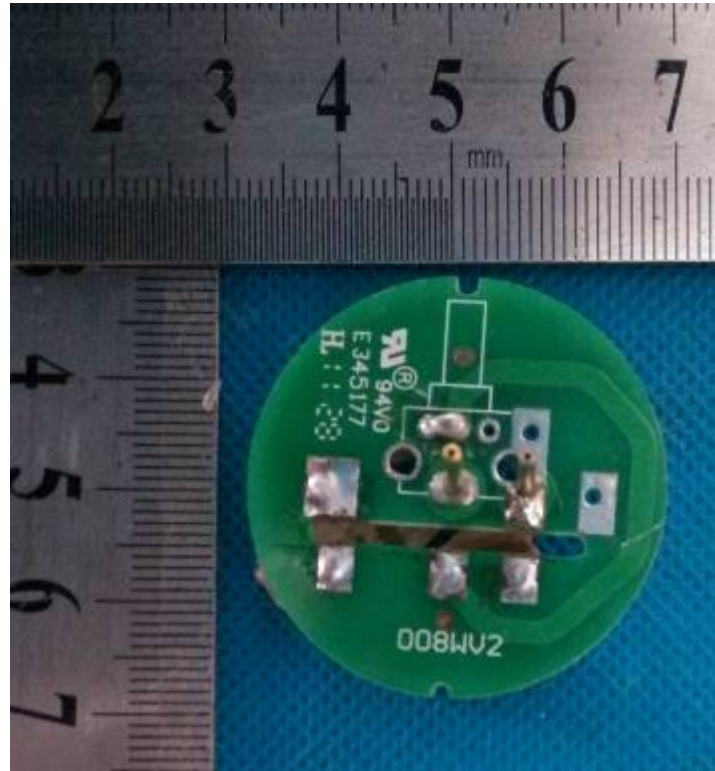


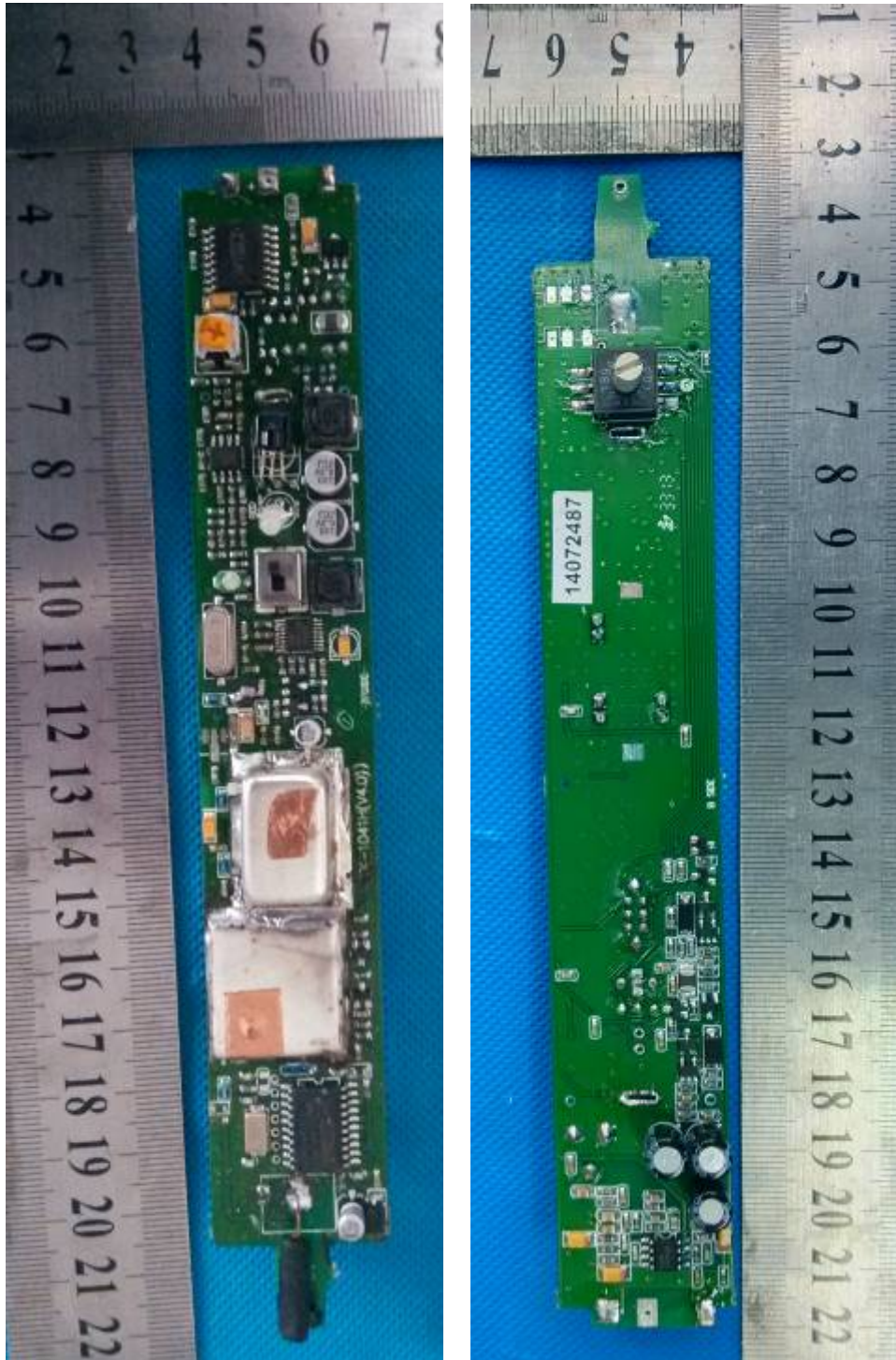


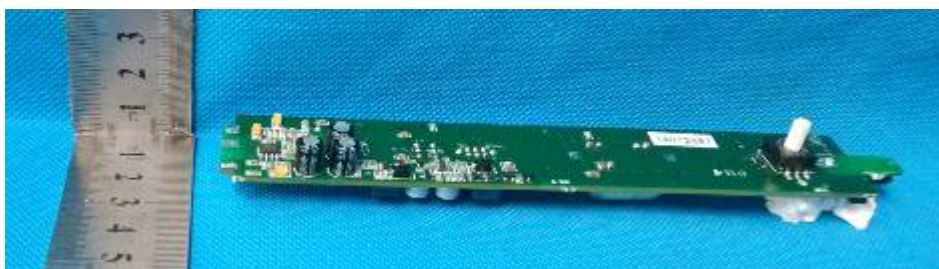
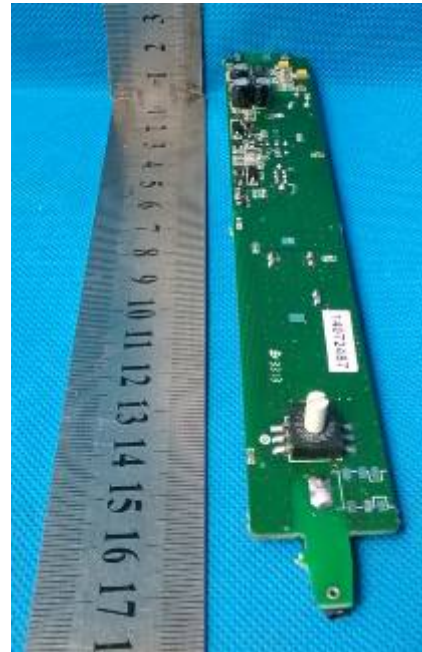
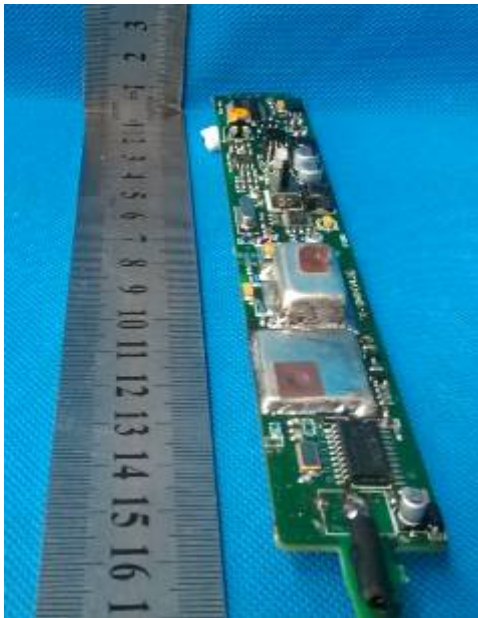






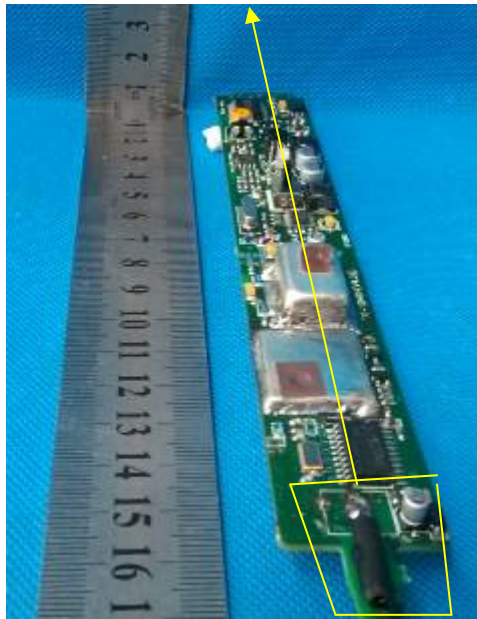






4.3 Antenna Photo

Antenna



Note:

The EUT was used permanently attached antenna, and it's complied with the requirements of section 15.203: antenna requirement.

5 EQUIPMENTS USED DURING TEST

Item	Test Equipment	Manufacturer	Model No.	Inventory No.	Cal. Date	Cal. Due date
1	RF Generator	Rohde & Schwarz	SMB100A-B106	1.031	2015-5-10	2016-5-10
2	Spectrum Analyzer	Rohde & Schwarz	FSP30	EMC0001	2015-3-24	2016-3-24
3	EMI Test Receiver	Rohde & Schwarz	ESCI	EMC1002	2015-3-24	2016-3-24
4	2-Channel Power Meter	Rohde & Schwarz	NRP2	1.033	2015-5-10	2016-5-10
5	Audio Analyzer	Hewlett Packard	8903B	EMC0011	2014-11-5	2015-11-5
6	Power Sensor	Rohde & Schwarz	NRP-Z91	1.034	2015-5-10	2016-5-10
7	Power Sensor	Rohde & Schwarz	NRP-Z91	1.035	2015-5-10	2016-5-10
8	Temperature Chamber	Gongwen	GDS-250	SFT0009	2014-11-5	2015-11-5
9	D.C. Power Supply	KIKUSUI	PAN35-10A	SFT0319	2014-11-5	2015-11-5
10	Temperature Chamber	Gongwen	GDS-250	SFT0009	2014-11-5	2015-11-5
11	D.C. Power Supply	KIKUSUI	PAN35-10A	SFT0319	2014-11-5	2015-11-5
12	Humidity/ Temperature Meter	Anymetre	TH101B	SFT0063	2014-11-5	2015-11-5
13	Barometer	ChangChun	DYM3	SEL0088	2015-6-8	2016-6-8
14	Multimeter	UNI-T	UT70A	EMC0017	2014-11-5	2015-11-5
15	Monopole Antenna	HST	N/A	EMC0089	2014-11-5	2015-11-5
16	Low loss coaxial cable	HST	2 m	EMC1008	2014-11-5	2015-11-5
17	Monopole Antenna	HST	N/A	N/A	2014-11-5	2015-11-5
18	Noise Generator	Ningbo Zhongce	DF1681	EMC0009	2014-11-5	2015-11-5
19	Semi-Anechoic chamber	ETS•Lindgren	FACT3 2.0	ITL-100	2013-6-17	2016-6-17
20	EMI Test receiver	R&S	ESVS10	ITL-111	2015-1-19	2016-1-19
21	EXA Spectrum Analyzer	Agilent Technologies	N9010A	ITL-114	2015-1-19	2016-1-19
22	Biconilog Antenna	ETS•Lindgren	3142D	ITL-105	2015-1-24	2018-1-24
23	Pre Amplifier	HP	8447F	ITL-116	2015-1-19	2016-1-19
24	Wideband Amplifier Super Ultra	Mini-circuits	ZVA-183-S+	ITL-117	2015-1-19	2016-1-19
25	Horn Antenna	A-INFOMW	JXTXLB-10180-N	ITL-110	2015-1-24	2018-1-24
26	Software	Audix	E3	ITL-109	/	/
27	Loop Antenna	BJ 2nd Factory	ZN30900A	EMC6001	2013-7-29	2016-7-29

End of report