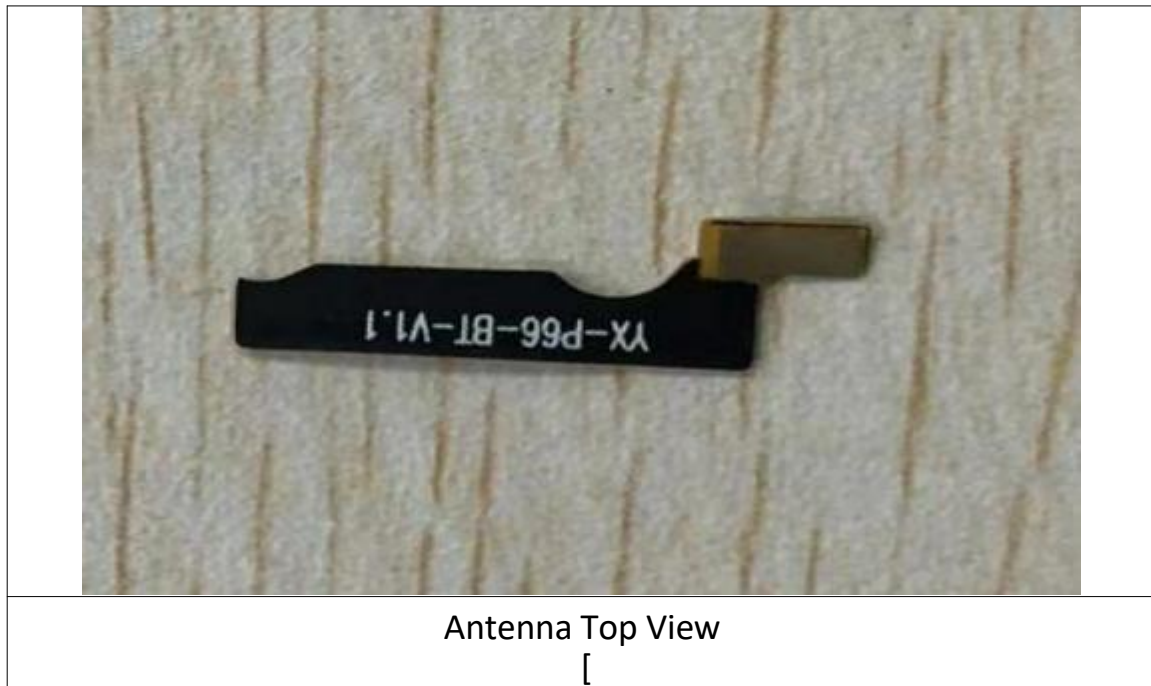
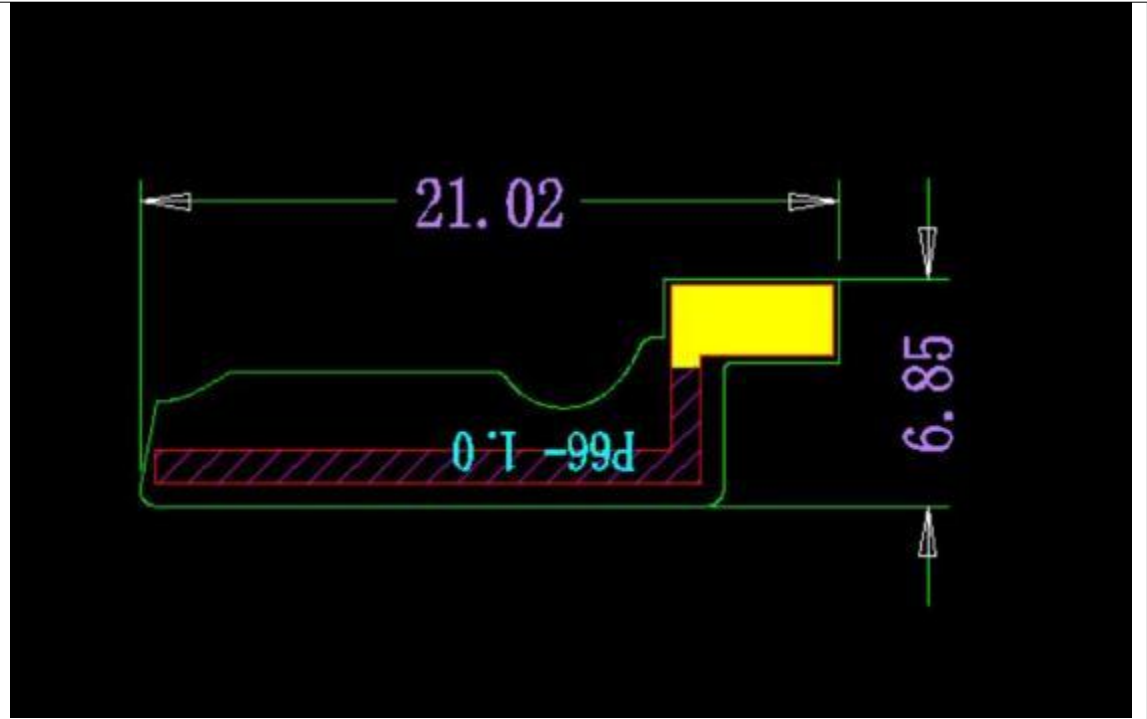


## Antenna Information

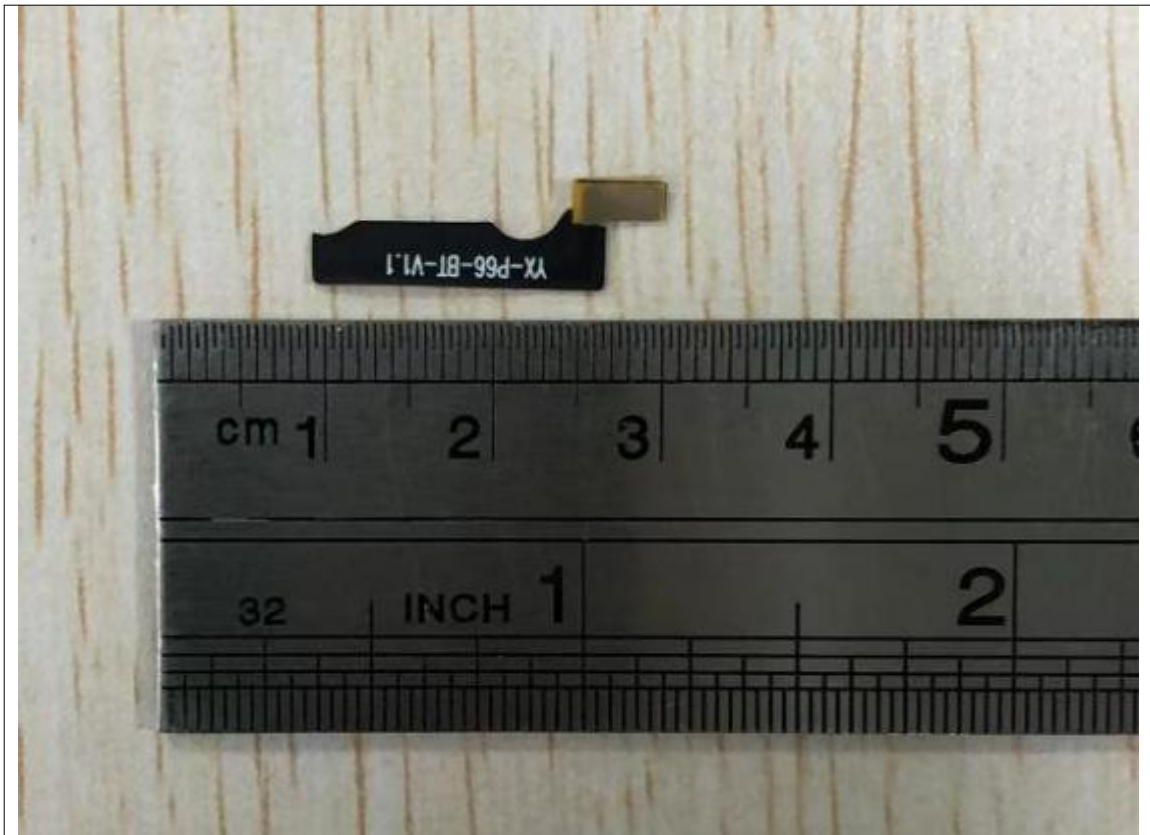
Manufacturer	<b>Shenzhen Panlong Communication Technology Co., Ltd.</b>
Antenna Type	Onboard antenna
Antenna Model	FPC antenna
Antenna Part Number	3.30.P66.001
Antenna Frequency Range	2400-2500MHz
Manufacturer Address	201, 2nd Floor, Baisifu Maker, No. 8 North Second Lane, Shiyan Liguang Water Plant, Bao'an District, Shenzhen City
Antenna Peak Gain	-1.56dBi
Antenna Dimension (LxHxW)	21.02*6.85mm

## Antenna Photo





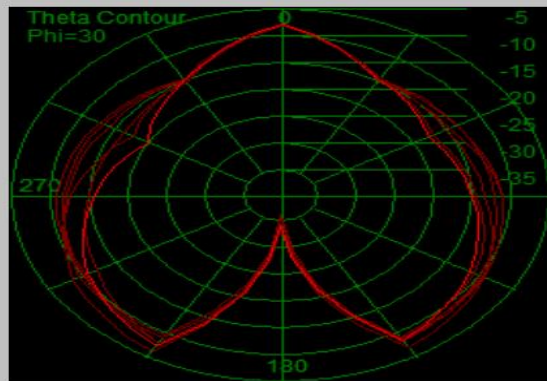
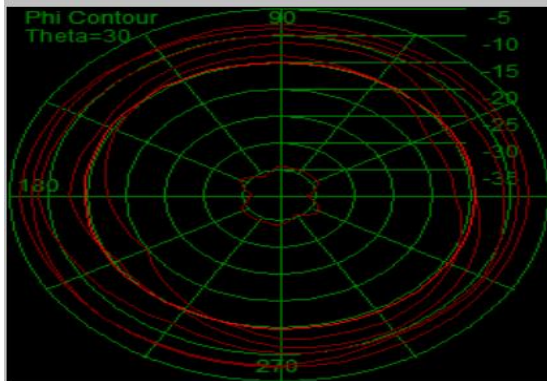
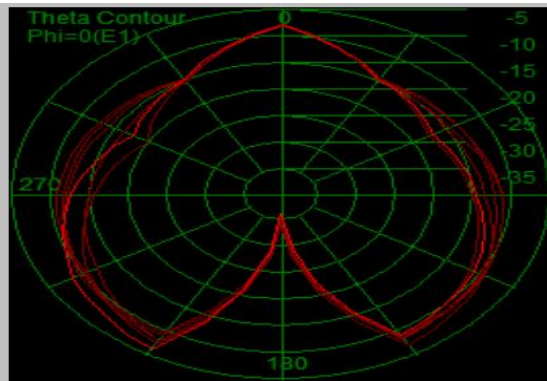
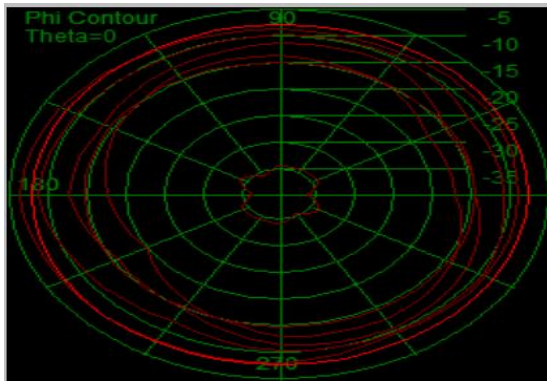
With Ruler]

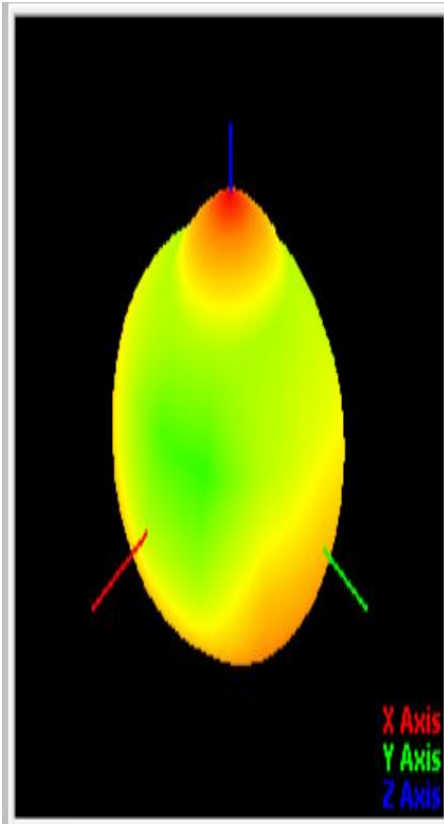


Antenna Bottom View [With Ruler]

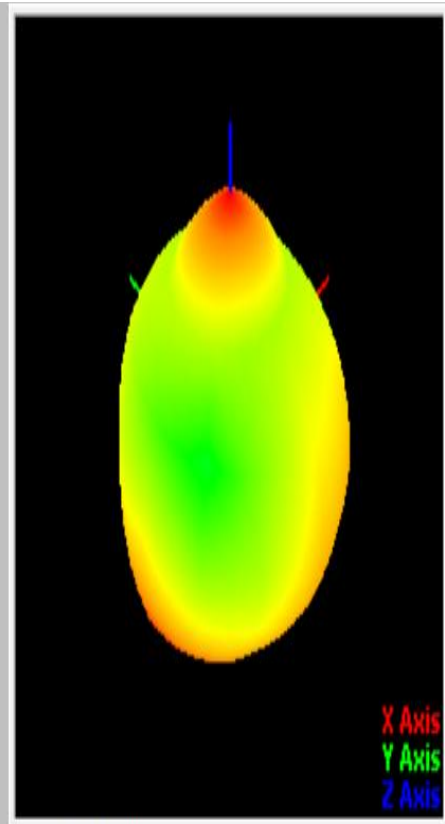
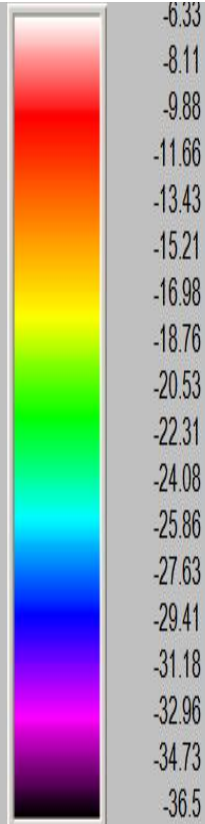
**Antenna Pattern/Gain Measurement data/Table:**

Frequency	2.4GHz	2.42GHz	2.44GHz	2.45GHz	2.46GHz	2.48GHz	2.5GHz
Ant. Port Inp. Pow. (dBi)	0	0	0	0	0	0	0
Rad. Pow. (dBi)	-6.13	-5.54	-6.02	-6.17	-6.41	-7.02	-7.79
Rad. Pow. 0-90 (dBi)	-8.91	-8.12	-8.44	-8.51	-8.66	-9.1	-9.76
Rad. Pow. 90-180 (dBi)	-9	-8.66	-9.32	-9.57	-9.91	-10.76	-11.74
Peak EIRP (dBi)	-2.12	-1.56	-2.13	-2.21	-2.4	-2.92	-3.76
Directivity (dBi)	4.01	3.98	3.89	3.96	4.01	4.1	4.03
Efficiency (dB)	-6.13	-5.54	-6.02	-6.17	-6.41	-7.02	-7.79
Efficiency (%)	24.38	27.93	25	24.15	22.86	19.86	16.63
Gain (dBi)	-2.12	-1.56	-2.13	-2.21	-2.4	-2.92	-3.76





T45-P45



T45-P225