

**Image 7. Q-Reader bottom removed**



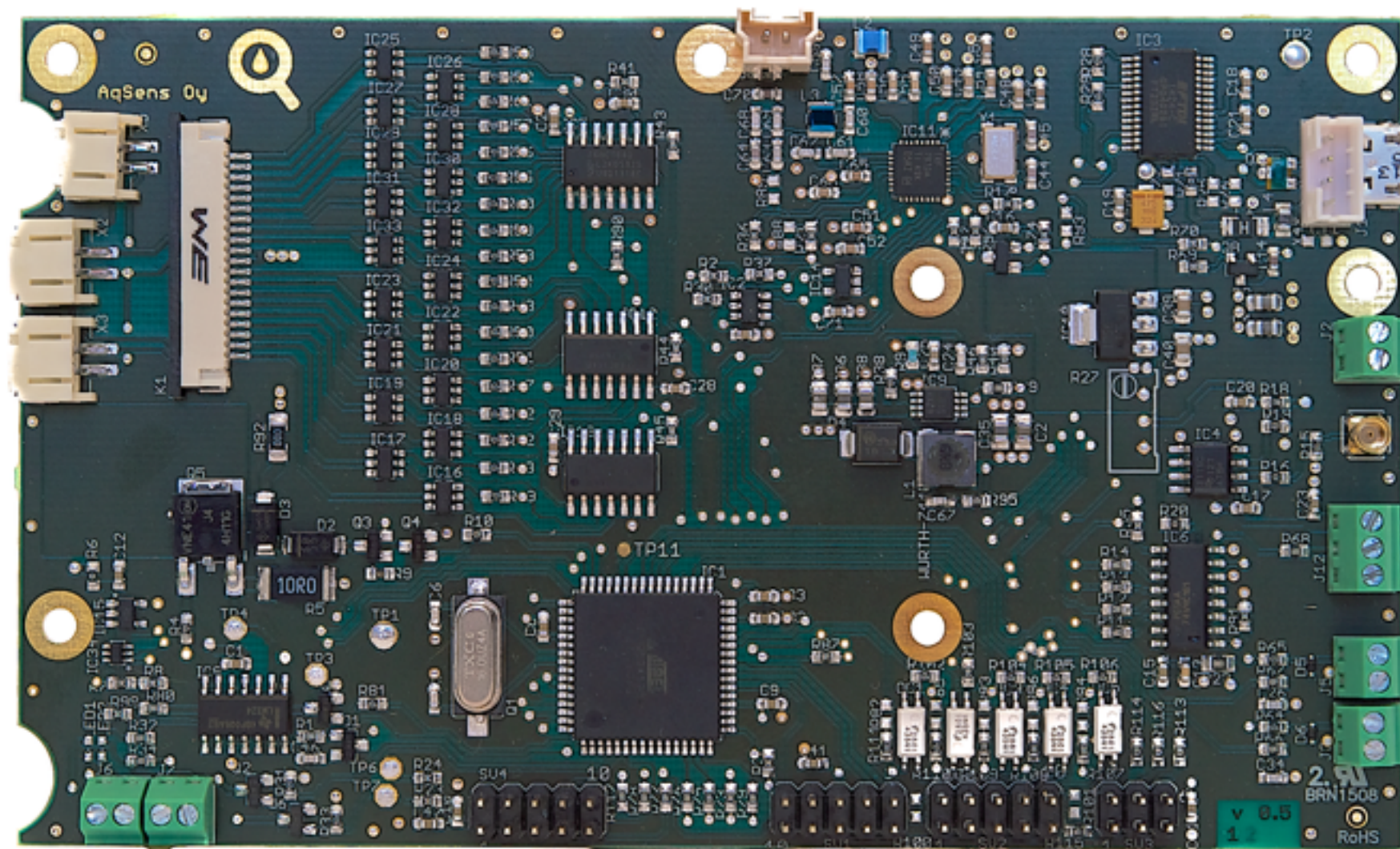
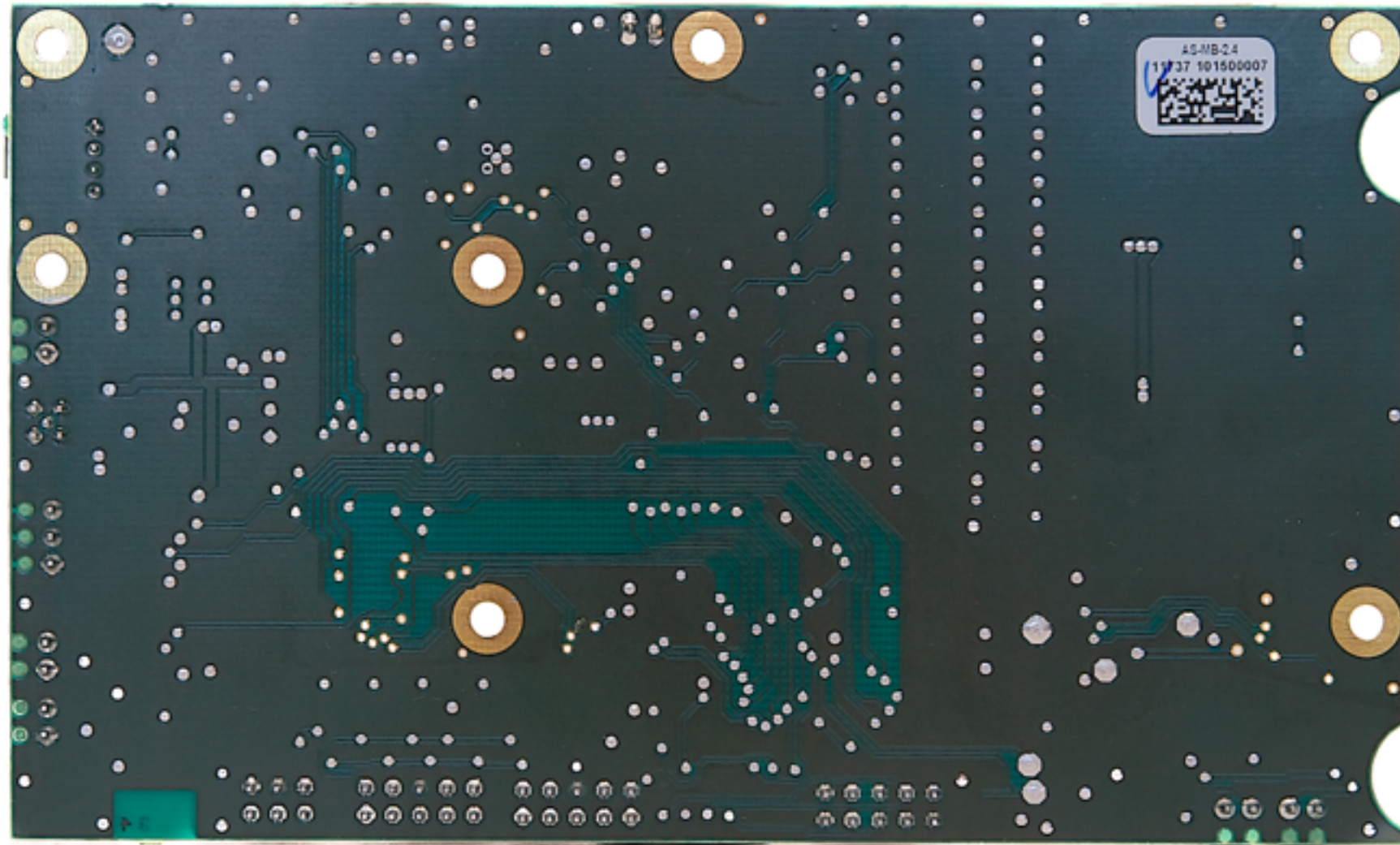
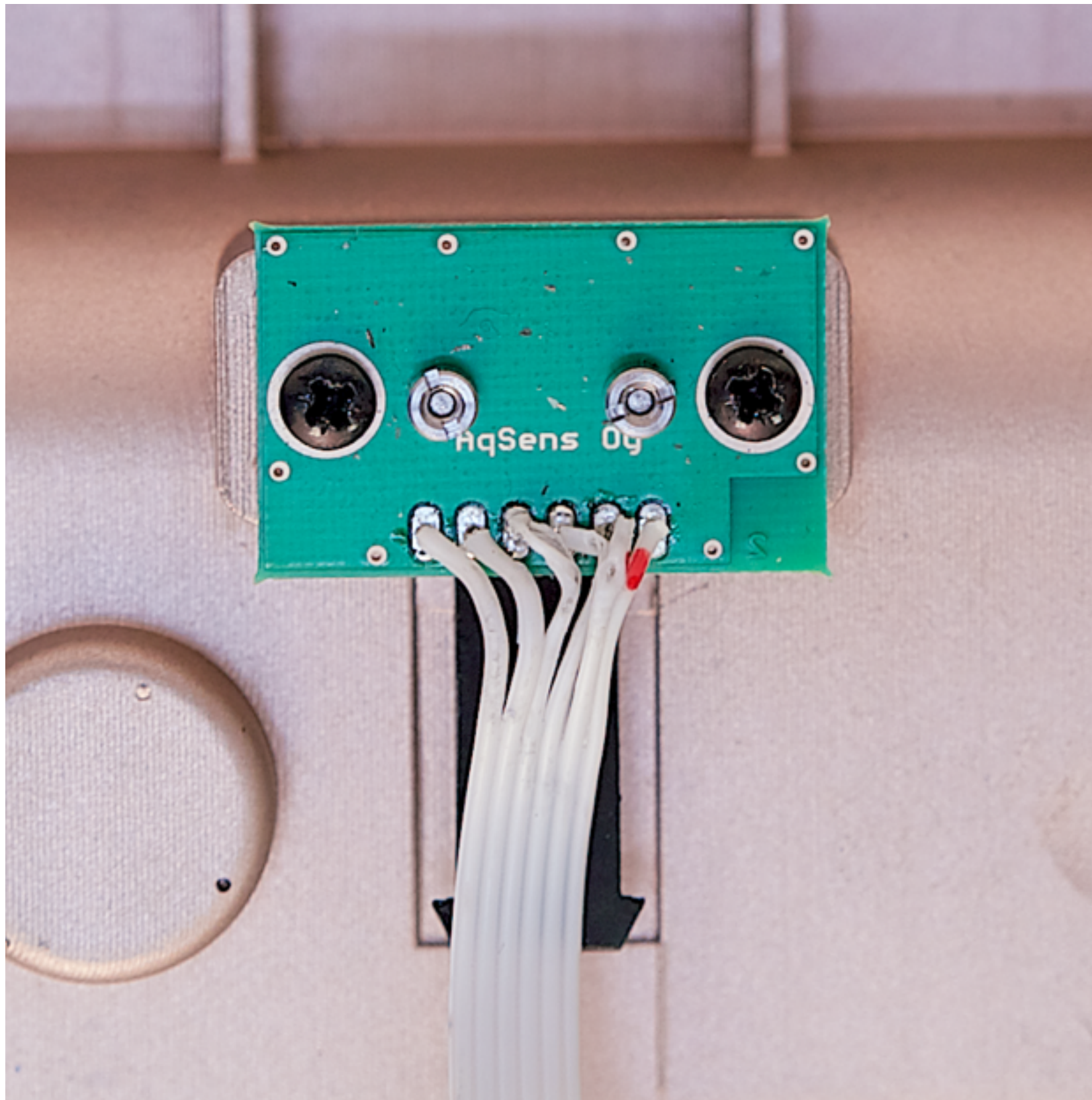


Image 8. Q-Reader mainboard

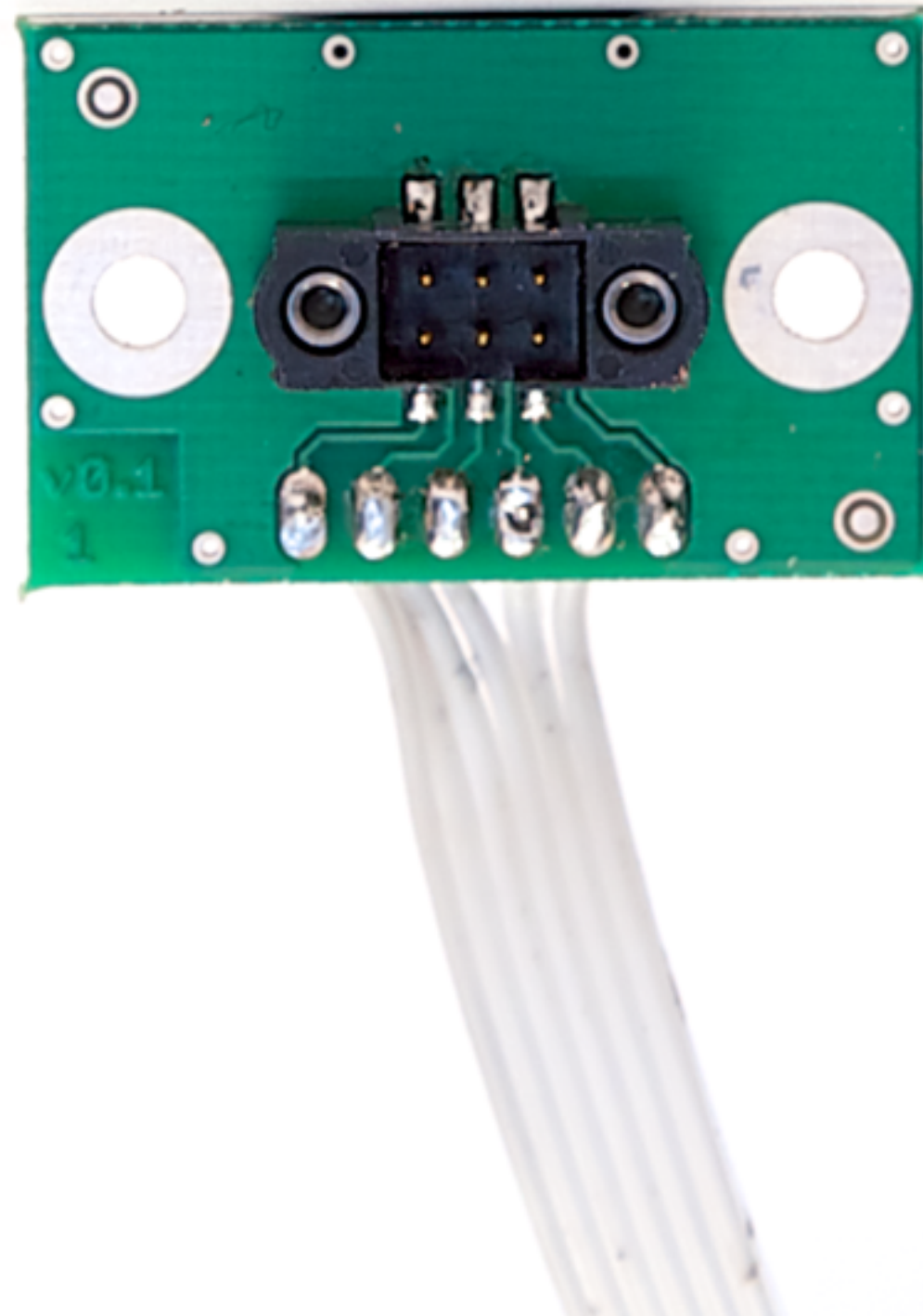


**Image 9. Q-Reader main board from behind**





**Image 10. JTAG-connector-board attached**



**Image 11. JTAG-connector-board front**

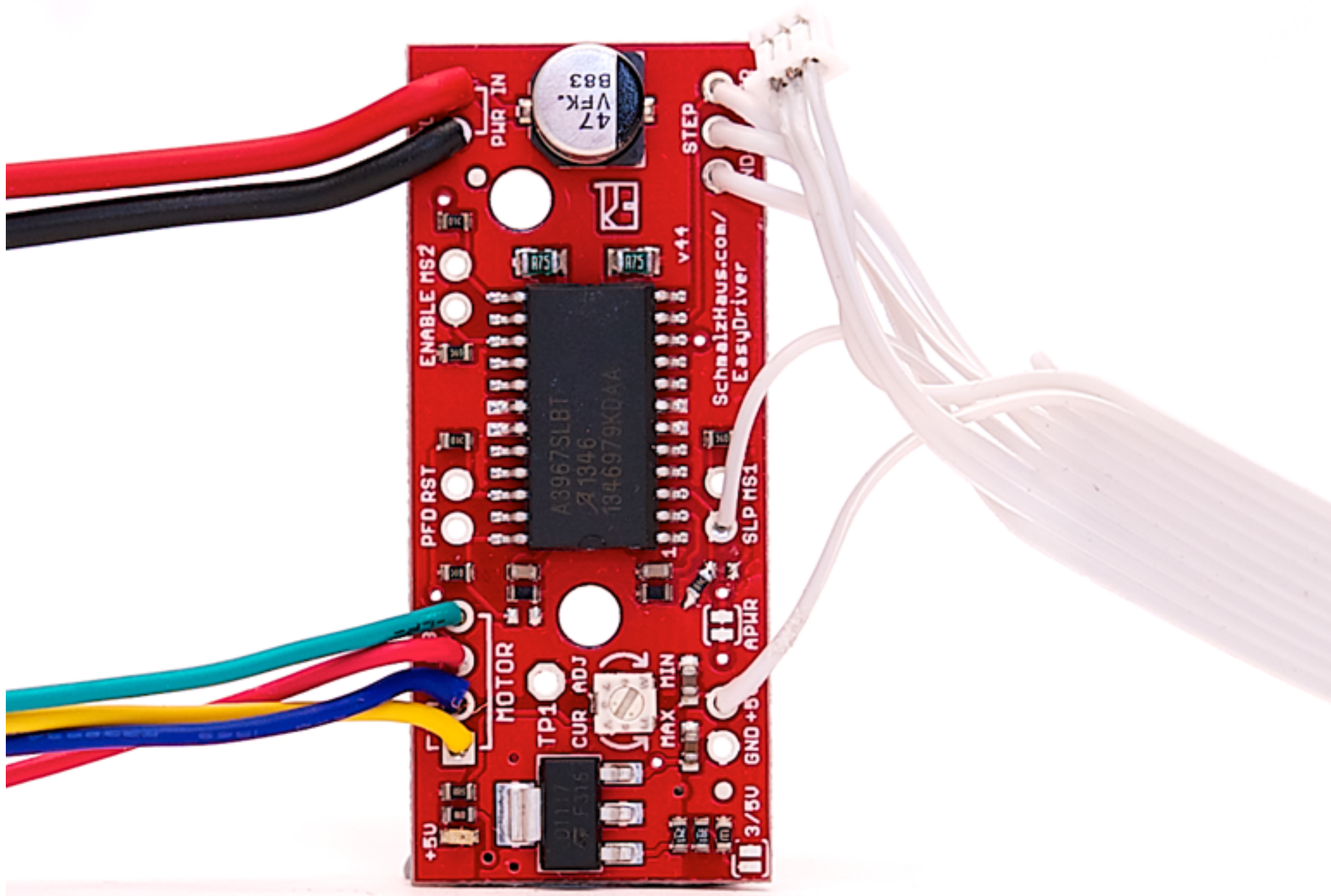
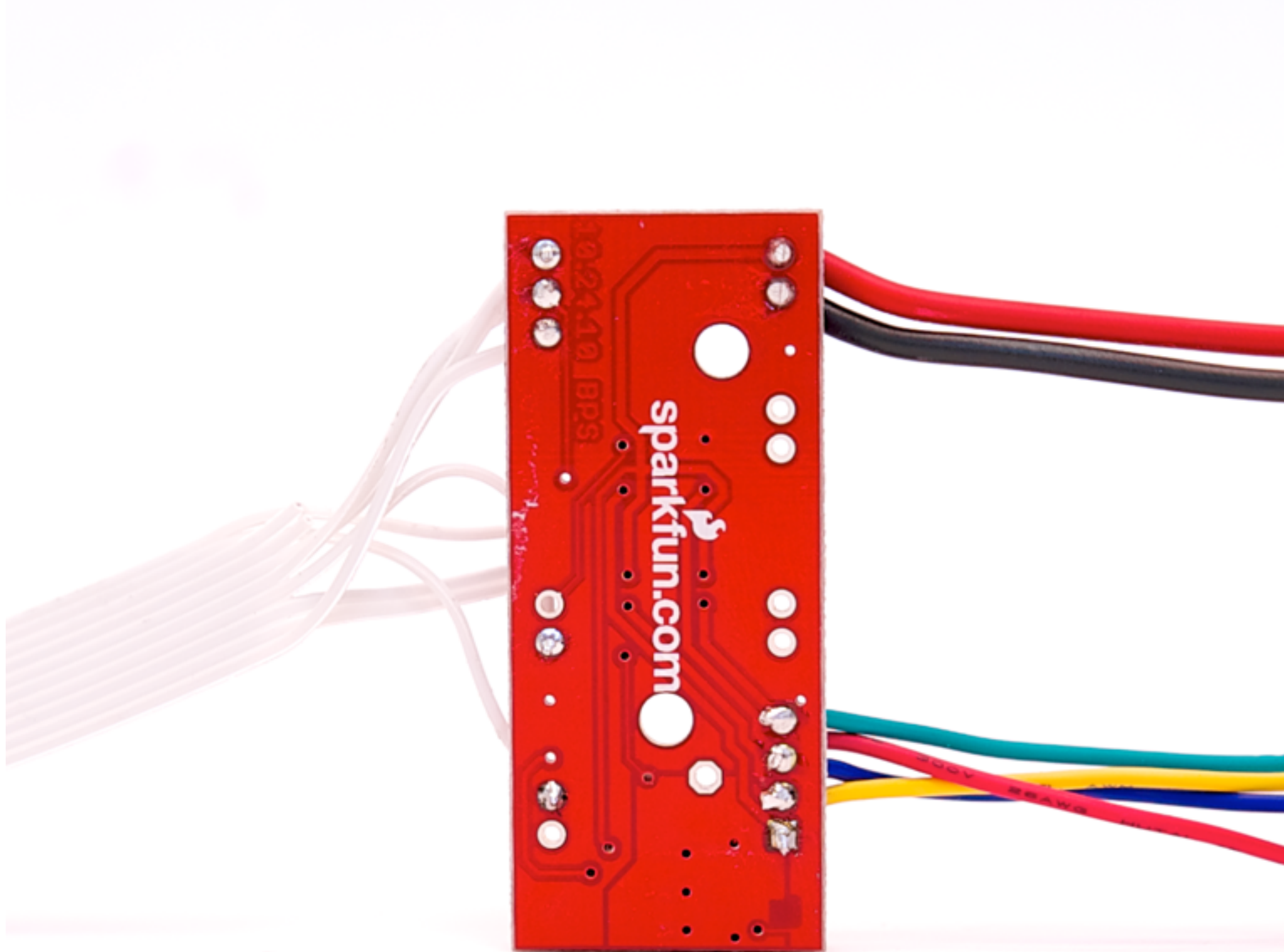


Image 12. Steppermotor driverboard





**Image 13. Stepper motor driverboard from behind**