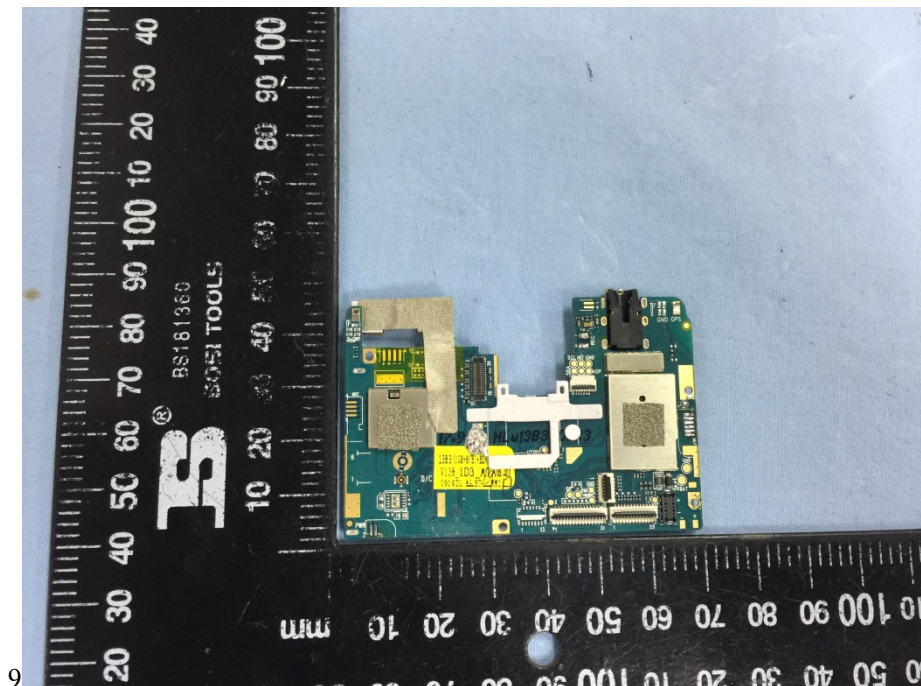


EXHIBIT 3 - EUT INTERNAL PHOTOGRAPHS

EUT Housing and Board View 1

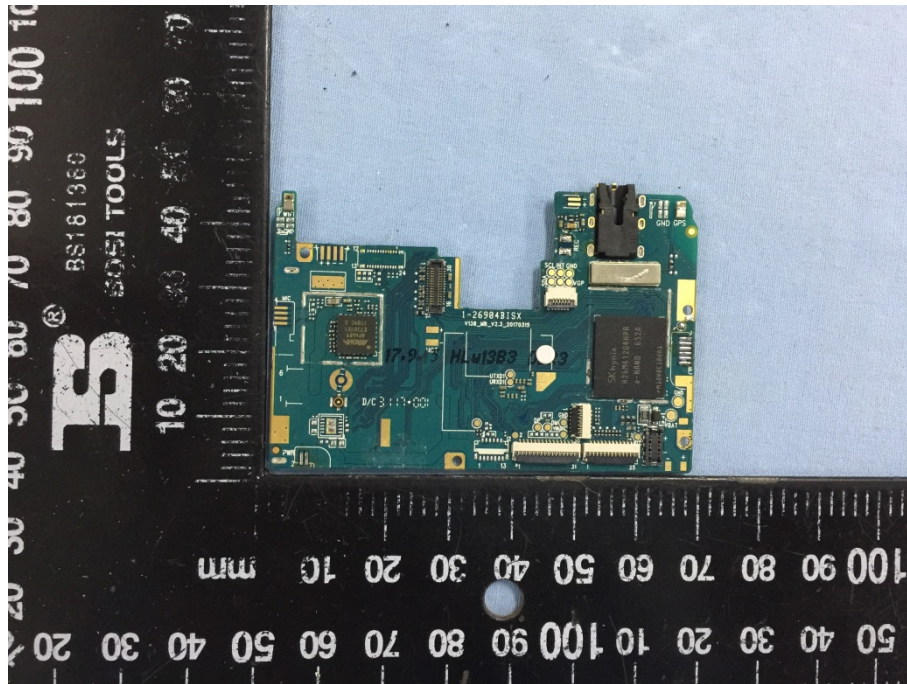
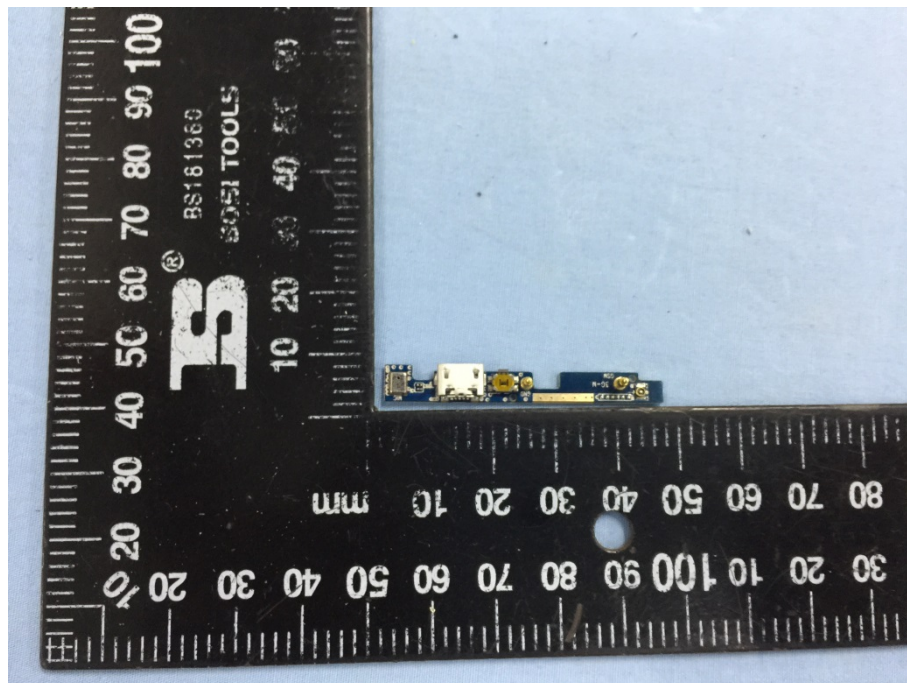


Solder Board-Component View 1



[illegible]

A photograph of a disassembled smartphone, showing the internal components. The main board is green and populated with various chips, including a large black chip labeled 'MEDIATEK' and another labeled 'MT8135'. A silver SIM card slot is visible on the left. A black battery is partially visible at the top. A ruler is placed horizontally below the device, showing measurements in millimeters (0 to 100 mm) and centimeters (0 to 10 cm). The ruler also features the text 'B3', 'BS181360', and '5051 TOOLS'. The background is a light blue surface.

Solder Board-Component View 4**Solder Board-Component View 5**

Solder Board-Component View 6