

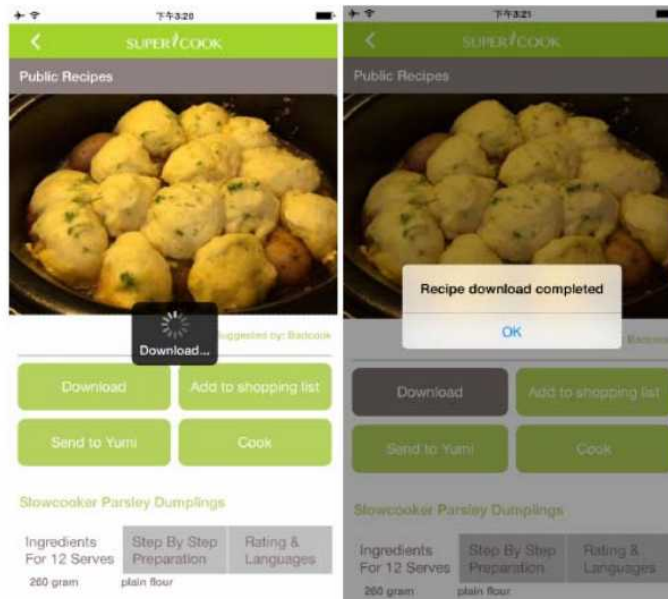
## SC200 WIFI Download and Recipe Transfer

- 1 Download and install the latest Supercook APP to Iphone /Ipad from APP store
- 2 Place the Yumi control module in the recess on the Supercook. After about 30 Seconds the wifi will Open automatically with the Indicator light flash Green color .
- 3 You will found a "Supercook SC200 \*\*\*\*\* " wifi on your Iphone/Ipad wifi Setting(The punctuation "\*" stand for letter or number), Connect it with Password 12345678 .
- 4 Opening the "Supercook" APP
- 5 Click"Connect Yumi to WIFI Network"
6. Click the first line "Supercook SC200 \*\*\*\*\* No WIFI >" into Supercook Wifi list,Connect an useful Wifi with correct Password ,The Supercook WIFI will Restart , Please go to Your device wifi setting to reconnect the supercook WIFI.If your connected the useful WIFI before , then you could skip this Step .

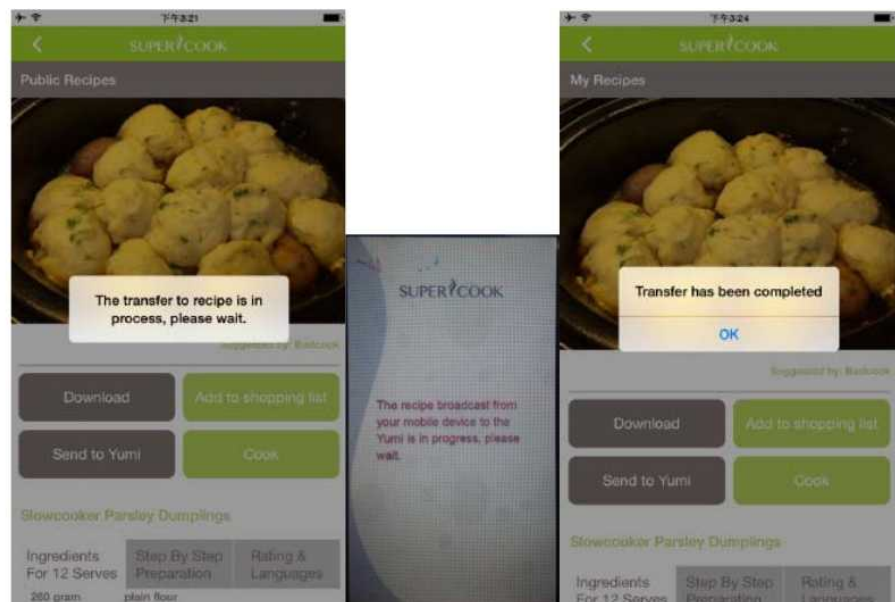


- 7 Sign in with correct User Name and Password .
- 8 Select any Recipes you like from the Public Recipes

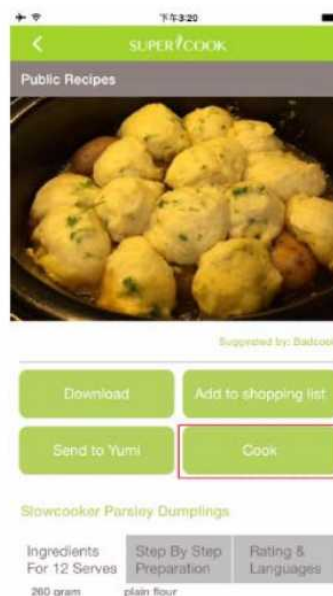
- 9 Click "Download" to download the recipe. (The Serial Number need Match with your Wifi Yumi Serial Number")



- 10 After Recipe download completed, click "Send to Yumi" Icon Send the recipe to your Yumi, While the "The Transfer to recipe is in progress, please wait." popups appearance, Yumi will show "The Recipe broadcast from your mobile device to the Yumi is in progress, please wait.", After 10s, App will show "Transfer has been completed", The recipe sent successfully.



- 11 The recipes you have already "Download" and "Send to Yumi" can be "Cook", Click the "Cook" Icon, The Yumi will Jump to Same Recipe For your use.



## FCC Notice:

This device complies with Part 15 of the FCC Rules. Operation is subject to the following two conditions: (1) This device may not cause harmful interference, and (2) this device must accept any interference received, including interference that may cause undesired operation.

Caution: Changes or modifications not expressly approved by the party responsible for compliance could void the user's authority to operate the equipment.

NOTE: This equipment has been tested and found to comply with the limits for a Class B digital device, pursuant to part 15 of the FCC Rules. These limits are designed to provide reasonable protection against harmful interference in a residential installation. This equipment generates uses and can radiate radio frequency energy and, if not installed and used in accordance with the instructions, may cause harmful interference to radio communications. However, there is no guarantee that interference will not occur in a particular installation. If this equipment does cause harmful interference to radio or television reception, which can be determined by turning the equipment off and on, the user is encouraged to try to correct the interference by one or more of the following measures:

- Reorient or relocate the receiving antenna.
- Increase the separation between the equipment and receiver.
- Connect the equipment into an outlet on a circuit different from that to which the receiver is connected.
- Consult the dealer or an experienced radio/TV technician for help.