

TD191-B

USB Dongle

Quick Start Guide

JACS Solutions, Inc.
809 Pinnacle Drive, Suite R, Linthicum Heights, MD
21090, USA

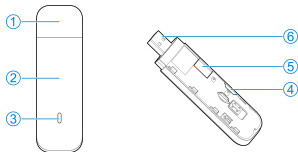
Safety and Use

- If inadequately shielded, some electronic devices may be affected by the electromagnetic interference caused by the dongle, such as the electronic system of vehicles. Consult the manufacturers of such devices before using the dongle if necessary.
- Operating the dongle may interfere with medical instruments such as hearing aids and pacemakers. Always keep the dongle more than 20 centimeters away from such medical instruments when your dongle is turned on. Turn the dongle off if necessary. Consult a physician or the manufacturers of medical instruments before using the dongle if necessary.
- Be aware of the usage limitation when using the dongle at places such as oil warehouses or chemical factories, where there are explosive gases or explosive products being processed. Turn off the dongle if necessary.
- Do not use electronic transmission devices in aircrafts, at petrol stations or in hospitals. Observe and obey all warning signs, and turn off the dongle in these conditions.
- Do not touch the inner antenna area unless it is necessary. Otherwise the performance of the modem may be affected.
- Keep the dongle out of the reach of little children. The dongle may cause an injury if used as a toy.
- When the dongle is operating, do not touch the metallic parts. Failing to do so may cause burns.
- Use original accessories or accessories that are authorized. Using any unauthorized accessories may affect the performance of the dongle and violate the related national regulations about telecom terminals.
- Avoid using the dongle near or inside metallic structures or establishments that can emit electromagnetic waves, because signal reception may be affected.
- The dongle is not waterproof. Keep the dongle dry and store it in a shady and cool place.
- Do not use the dongle immediately after a sudden temperature change. In such case, dew may be generated inside and outside the dongle, so do not use it until it becomes dry.
- Handle the dongle carefully. Do not drop, bend or strike it. Otherwise the dongle may be damaged.
- Only qualified personnel can dismantle and repair the dongle.
- An operating temperature between -20°C and +65°C and a humidity between 5% and 95% are recommended.

Getting to Know Your Modem

The following figure is only for your reference. The actual product may be different.

- Modem cap
- Front cover
- Indicator light
- nano-SIM card slot
- *microSDHC™ card slot
- USB connector



NOTE:

microSDHC logo is a trademark of SD-3C, LLC.

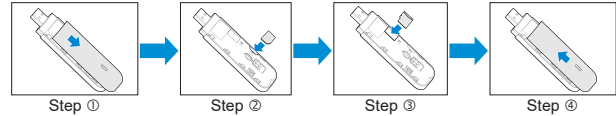
Indicator Light Description

Indicator Status	Description
Red	The device is in error status or booting up. <ul style="list-style-type: none"> The device is not registered to the mobile network. There is no nano-SIM card inserted. There is no network service available.
Green solid	The device is registered to the 2G/3G mobile network.

Green blinking	The device is connected to the 2G/3G mobile network and data is being transferred.
Blue solid	The device is registered to the 4G network.
Blue blinking	The device is connected to the 4G network and data is being transferred.

Using Your Modem

- Insert the nano-SIM card ② into your modem.

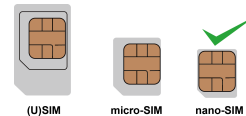


NOTES:

- Do not open the front cover forcibly. Failing to do so may cause damage to the front cover.
- *If the modem supports the microSDHC card, you can insert your microSDHC card ③ at the same time.

WARNING!

Your modem only supports the nano-SIM card. You can get a standard nano-SIM card from your service provider.



- Connect the modem to your computer or laptop.
- The software will be installed automatically and then you can use your modem.

NOTE:

If the system does not launch installation automatically, you can double-click the modem installation icon in **My Computer > JACSDRIVER_191-B** to install the software.

Setting Your Modem

You can set your modem by:

- Logging in to the 4G Hostless Modem configuration page by visiting <http://192.168.0.1> (For WebUI).
- Clicking **Settings** on the software (For PCUI).

Setting Access Point Name Manually

If your computer or laptop cannot access the Internet, you can add a new Access Point Name (APN) manually.

- Launch the Internet browser and enter <http://192.168.0.1> in the address bar.
- Select **Settings > APN > Manual**.
- Click **Add New**, enter the new APN information and then click **Apply**.
- Click **Set as default** to set the new APN as the default APN.

NOTE: Contact your service provider to get the APN information.

LEGAL INFORMATION

Copyright © 2022 JACS Solutions, Inc.
All rights reserved.

No part of this publication may be excerpted, reproduced, translated or utilized in any form or by any means, electronic or mechanical, including photocopying and microfilm, without the prior written permission of JACS Solutions.

The manual is published by JACS Solutions. We reserve the right to make modifications on print errors or update specifications without prior notice.

Version No. : R1.0

FCC Regulations:

This device complies with part 15 of the FCC Rules. Operation is subject to the following two conditions: (1) This device may not cause harmful interference, and (2) this device must accept any interference received, including interference that may cause undesired operation.

This device has been tested and found to comply with the limits for a Class B digital device, pursuant to Part 15 of the FCC Rules. These limits are designed to provide reasonable protection against harmful interference in a residential installation. This equipment generates, uses and can radiate radio frequency energy and, if not installed and used in accordance with the instructions, may cause harmful interference to radio communications. However, there is no guarantee that interference will not occur in a particular installation. If this equipment does cause harmful interference to radio or television reception, which can be determined by turning the equipment off and on, the user is encouraged to try to correct the interference by one or more of the following measures:

- Reorient or relocate the receiving antenna.
- Increase the separation between the equipment and receiver.
- Connect the equipment into an outlet on a circuit different from that to which the receiver is connected.
- Consult the dealer or an experienced radio/TV technician for help.

Caution: Changes or modifications not expressly approved by the party responsible for compliance could void the user's authority to operate the equipment.

FCC RF Exposure Information (SAR)

This device is designed and manufactured not to exceed the emission limits for exposure to radio frequency (RF) energy set by the Federal Communications Commission of the United States.

During SAR testing, this device is set to transmit at its highest certified power level in all tested frequency bands, and placed in positions that simulate RF exposure in usage against the head with no separation, and near the body with the separation of 5 mm. Although the SAR is determined at the highest certified power level, the actual SAR level of the while operating can be well below the maximum value. This is because the device is designed to operate at multiple power levels so as to use only the power required to reach the network. In general, the closer you are to a wireless base station antenna, the lower the power output.

The exposure standard for wireless employs a unit of measurement known as the Specific Absorption Rate, or SAR. The SAR limit set by the FCC is 1.6W/kg. Tests for SAR are conducted using standard operating positions accepted by the FCC with the device transmitting at its highest certified power level in all tested frequency bands.

The FCC has granted an Equipment Authorization for this model device with all reported SAR levels evaluated as in compliance with the FCC RF exposure guidelines. SAR information on this model device is on file with the FCC and can be found under the Display Grant section of www.fcc.gov/oet/ea/fccid after searching on FCC ID: 2AGCDJACSTD191-B.

For this device, the highest reported SAR value for near the body is 1.19 W/kg. While there may be differences between the SAR levels of various devices and at various positions, they all meet the government requirement.

SAR compliance for body operation is based on a separation distance of 5 mm between the unit and the human body. Carry this device, at least 5 mm away from your body to ensure RF exposure level compliant or lower to the reported level.

To support body operation, choose the belt clips or holsters, which do not contain metallic components, to maintain a separation of 5 mm between this and your body.

PTCRB Certified

Detail information refer to <https://www.ptcrb.com/certified-devices/device-details/?model=xxxxx>

Specific Absorption Rate (SAR)

Your mobile device is a radio transmitter and receiver. It is designed not to exceed the limits for exposure to radio waves recommended by international guidelines. These guidelines were developed by the independent scientific organization ICNIRP and include safety margins designed to assure the protection of all persons, regardless of age and health.

The guidelines use a unit of measurement known as Specific Absorption Rate, or SAR. The SAR limit for mobile devices is 2 W/kg and the highest SAR value for this device when tested at the body was 1.458 W/kg* with 5 mm distance.

As SAR is measured utilizing the device's highest transmitting power, the actual SAR of this device while operating is typically below that indicated above. This is due to automatic changes to the power level of the device to ensure it only uses the minimum power required to communicate with the network.

* The tests are carried out in accordance with EN 62209-2, EN 50566 and EN 62311.

Specification

This radio equipment operates with the following frequency bands and maximum radio-frequency power.

NOTE:

All JACS Solutions' products are compliant with these power limits required by the European Union. Frequency bands supported by the product vary by model.

GSM 900: 35 dBm GSM 1800: 32 dBm UMTS BAND 1/8: 25 dBm

LTE BAND 1/3/7/8/20: 25 dBm

ISED Caution

IC: 25646-JACSTD191B

This device complies with Industry Canada's license-exempt RSSs. Operation is subject to the following two conditions:

"Operation is subject to the following two conditions: (1) this device may not cause interference, and (2) this device must accept any interference, including interference that may cause undesired operation of the device."

Le présent appareil est conforme aux CNR d'Industrie Canada applicables aux appareils radio exempts de licence. L'exploitation est autorisée aux deux conditions suivantes:

- 1) l'appareil ne doit pas produire de brouillage;
- 2) l'appareil doit accepter tout brouillage radioélectrique subi, même si le brouillage est susceptible d'en compromettre le fonctionnement.

Radiation Exposure Statement:

The product complies with the Canada portable RF exposure limit set forth for an uncontrolled environment and are safe for intended operation as described in this manual. The further RF exposure reduction can be achieved if the product can be kept as far as possible from the user body or set the device to lower output power if such function is available. Déclaration d'exposition aux radiations: Le produit est conforme aux limites d'exposition pour les appareils portables RF pour les Etats Unis et le Canada établies pour un environnement non contrôlé. Le produit est sûr pour un fonctionnement tel que décrit dans ce manuel. La réduction aux expositions RF peut être augmentée si l'appareil peut être conservé aussi loin que possible du corps de l'utilisateur ou que le dispositif est réglé sur la puissance de sortie la plus faible si une telle fonction est disponible.

CE Caution


USB Port

This product shall only be connected to a USB interface of version USB 2.0.

Proper Use

As described in this guide, your device can be used only in right location. If possible, please do not touch the antenna area on your device.

Disposal of Your Old Appliance

	<ol style="list-style-type: none">1. When this crossed-out wheeled bin symbol is attached to a product, it means the product is covered by the European Directive 2012/19/EU.2. All electrical and electronic products should be disposed of separately from the municipal waste stream via designated collection facilities appointed by the government or the local authorities.3. The correct disposal of your old appliance will help prevent potential negative consequences for the environment and human health.
---	---

For this product's recycling information based on WEEE directive, please send an e-mail to helpdesk@jacs-solutions.com

EU DECLARATION OF CONFORMITY



Hereby, JACS Solutions declares that the radio equipment type TD191-B is in compliance with Directive 2014/53/EU.

Declaration of RoHS Compliance

We declare that TD191-B manufactured by JACS Solutions meets the requirements of RoHS Directive 2011/65/EU and its amended directive (EU)2015/863. More information, please send an e-mail to helpdesk@jacs-solutions.com.