









**BUREAU
VERITAS**

TEST REPORT No.: (5215)280-0954(Revision)
Supersede Technical Report No.: (5215)280-0954

TEST REPORT

To:	PREMIUM PRODUCTS CORP.	To:	-						
Attn:	TRACY	Attn:	-						
Address:	2 FL., NO.261-1, LIAN CHENG RD, CHUNG HO CITY, TAIPEI HSIEN, TAIWAN.	Address:	-						
Fax:	886-2-22403545	Fax:	-						
E-mail:	preium.corp@msa.hinet.net	E-mail:	-						
Folder No.:	--								
Factory Name:	A.S. PLASTIC TOYS CO., LTD (1st FACTORY)								
Location:	--								
Product:	2PK walkie talkie 2016 MODEL: 467511								
		Sample No:	(5215)280-0954						
		Test Date(s):	October 13, 2015 to November 2, 2015						
		Test Requested:	FCC Part 15 – 2012						
		Test Method:	ANSI C63.4 – 2009						
		FCC ID:	2AGBM467511						
<p>The results given in this report are related to the tested specimen of the described electrical apparatus.</p> <p>CONCLUSION: The submitted sample was found to <u>COMPLY</u> with requirement of FCC Part 15 Subpart C.</p> <p>Authorized Signature:</p> <table border="1"> <tr> <td>  </td> <td>  </td> </tr> <tr> <td>Reviewed by: Keith Yeung</td> <td>Approved by: Law Man Kit</td> </tr> <tr> <td>Date: November 13, 2015</td> <td>Date: November 13, 2015</td> </tr> </table>						Reviewed by: Keith Yeung	Approved by: Law Man Kit	Date: November 13, 2015	Date: November 13, 2015
									
Reviewed by: Keith Yeung	Approved by: Law Man Kit								
Date: November 13, 2015	Date: November 13, 2015								

BUREAU VERITAS HONG KONG LIMITED –
Kowloon Bay Office
1/F Pacific Trade Centre,
2 Kai Hing Road, Kowloon Bay,
Kowloon, HONG KONG
Tel: +852 2331 0888
Fax: +852 2331 0889
www.cps.bureauveritas.com

This report is intended for your exclusive use. Any copying or replication of this report to or for any other person or entity, or use of our name or trademark, is permitted only with our prior written permission. Our report is limited to the test samples identified herein. The results set forth in this report are not necessarily indicative or representative of the statistical quality or characteristics of the lot from which a test sample was taken or any similar or identical product unless specifically and expressly noted. Our report includes all of the tests requested by you and the results thereof. You shall have thirty days from receipt of this report to request additional testing of the samples or to notify us of any errors or omissions relating to our report, provided, however, such notice shall be in writing and shall specifically address the issue you wish to raise. A failure to raise such issue within the prescribed time shall constitute your unqualified acceptance of the completeness of this report, the tests conducted and the correctness of the report contents.



TEST REPORT No.: (5215)280-0954(Revision)
Supersede Technical Report No.: (5215)280-0954

Test Result Summary

EMISSION TEST			
Test requirement: FCC Part 15 – 2012			
Test Condition	Test Method	Test Result	
		Pass	Failed
Radiated Emission Test, 9kHz to 1GHz	ANSI C63.4	<input checked="" type="checkbox"/>	<input type="checkbox"/>
Frequency range of Fundamental Emission	ANSI C63.4	<input checked="" type="checkbox"/>	<input type="checkbox"/>
26dB Bandwidth of Fundamental Emission	ANSI C63.4	<input checked="" type="checkbox"/>	<input type="checkbox"/>

Report Revision & Sample Re-submit History:

Sample first submission date: October 08, 2015

Sample second submission date, November 02, 2015

Revision: update test result



TEST REPORT No.: (5215)280-0954(Revision)
Supersede Technical Report No.: (5215)280-0954

Test Laboratory & Test Instruments List

Radiated and Conducted emissions measurements are investigated and taken pursuant to the procedures of ANSI C63.4 – 2009. An Open Area Test Site and Full Anechoic Chamber (FCC Listed Site, Registration No. 642151) are set up for investigation and located at:

BUREAU VERITAS HONG KONG LIMITED, EMC CENTRE

No. 2106-2107, 21/F., Westin Centre,
26 Hung To Road,
Kwun Tong, Kowloon,
Hong Kong

Test Instrument List

Radiated Emission

EQUIPMENT	MANUFACTURER	MODEL NO.	SERIAL NO.	CALIBRATION DUE
EMI TEST RECEIVER	R&S	ESCI	100379	20-JAN-2016
LOOP ANTENNA	ETS-LINDGREN	6502	00102266	19-OCT-2016
BILOG ANTENNA	SCHAFFNER	CBL6112D	25229	02-JAN-2016
OPEN AREA TEST SITE	BVCPS	N/A	N/A	18-JUN-2016
ANECHOIC CHAMBER	ALBATROSS	M-CDC	80374004499B	12-FEB-2016
COAXIAL CABLE	SUHNER	RG214	N/A	22-SEP-2016

Measurement Uncertainty

MEASUREMENT	FREQUENCY	UNCERTAINTY
Radiated emissions	9kHz to 30MHz	4.2dB
	30MHz to 1GHz	5.0dB
	1GHz to 18GHz	4.9dB

Remarks:-

N/A : Not Applicable or Not Available

The measurement instrumentation uncertainty would be taking into consideration on each of the test result

TEST REPORT No.: (5215)280-0954(Revision)
Supersede Technical Report No.: (5215)280-0954

Equipment Under Test [EUT]

Description of Sample:

Model Name: 2PK walkie talkie 2016
Model Number: 467511
Additional Model Name: --
Additional Model Number: --
Additional Model information: --
Rating: 9Vd.c. ("6F22" size battery x 1)

Description of EUT Operation:

The Equipment Under Test (EUT) is a **PREMIUM PRODUCTS CORP.** of Radio Control toy. The transmitter is 1 switch, 2 buttons and operating at 49.857MHz. The EUT continues to transmit buttons is being pressed, Modulation by IC, and type is frequency modulation.

The transmitter has different control:

1. Switch – ON/OFF control
2. Left button – Press to talk
3. Middle button – Morse code

Antenna Requirement

The EUT is use of a permanently antenna. The antenna consists of 7.5cm long metal spring covered with rubber. The antenna is not replaceable or user serviceable. The requirement of S15.203 are met .There are no deviations or exceptions to the specifications.

Photo of Antenna



TEST REPORT No.: (5215)280-0954(Revision)
Supersede Technical Report No.: (5215)280-0954

Test Results

Radiated Emissions (Fundamental)

Test Requirement: FCC Part 15 Section 15.235
Test Method: ANSI C63.4
Test Date(s): 2015-11-02
Temperature: 24.0 °C
Humidity: 63.0 %
Atmospheric Pressure: 101.8 kPa
Mode of Operation: Transmission mode
Tested Voltage: 9Vd.c. ("6F22" size battery x 1)

Test Method:

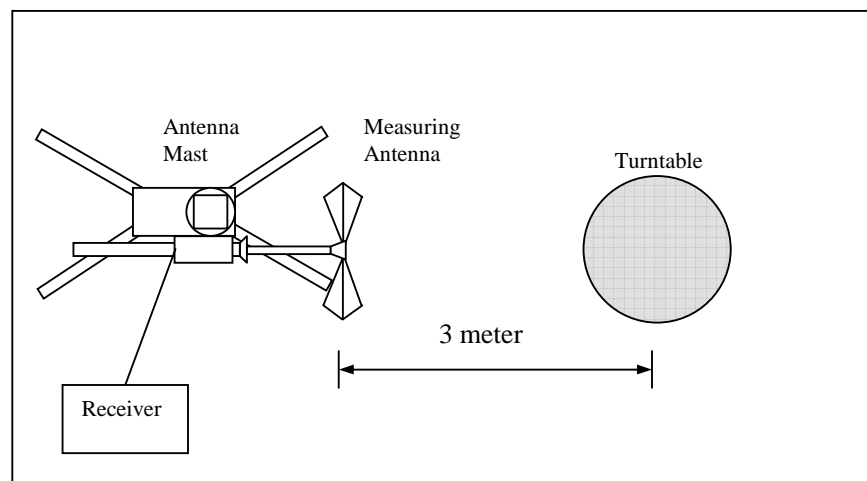
Radiated emissions measurements are investigated and taken pursuant to the procedures of ANSI C63.4 – 2009.

The equipment under test (EUT) was placed on a non-conductive turntable with dimensions of 1.5m x 1m and 0.8m high above the ground. 3m from the EUT, a broadband antenna mounting on the mast received the signal strength. During the test, each emission was maximized by: having the EUT continuously working, investigated all operating modes, rotated about all 3 axis (X, Y & Z) and considered typical configuration to obtain worst position, manipulating interconnecting cables, For battery operated equipment, the equipment tests shall be perform using new battery. The turntable was rotated to maximize the emission level. The antenna was then moving along the mast from 1m up to 4m until no more higher value was found. Both horizontal and vertical polarization of the antenna were placed and investigated.

For below 30MHz, a loop antenna with its vertical plane is place 3m from the EUT and rotated about its vertical axis for maximum response at each azimuth about the EUT. And the centre of the loop shall be 1m above the ground.

Location: The Roof, Westin Centre, 26 Hung To Road, Kwun Tong, Kowloon, Hong Kong

Test Setup: Open Area Test Site





TEST REPORT No.: (5215)280-0954(Revision)
Supersede Technical Report No.: (5215)280-0954

Limits for Field Strength of Fundamental Emissions [FCC 47CFR 15.235]:

Frequency Range of Fundamental [MHz]	Field Strength of Fundamental Emission [Peak] [μV/m]	Field Strength of Fundamental Emission [Average] [μV/m]
49.82 – 49.90	100,000 (100 dBμV/m)	10,000 (80 dBμV/m)

Measurement Data

Test Result of (Transmission mode): PASS

Detection mode: Peak

Frequency (MHz)	Polarity (H/V) and degree	Antenna Factor and Cable Loss (dB/m)	Field Strength at 3m (dBμV/m)	Limit at 3m (dBμV/m)	Margin (dB)
49.857	H	10.0	63.2	100.0	-36.8
49.857	V	10.0	63.5	100.0	-36.5

Detection mode: Average

Frequency (MHz)	Polarity (H/V) and degree	Antenna Factor and Cable Loss (dB/m)	Field Strength at 3m (dBμV/m)	Limit at 3m (dBμV/m)	Margin (dB)
49.857	H	10.0	62.7	80.0	-17.3
49.857	V	10.0	63.3	80.0	-16.7

Note: Field Strength includes Antenna Factor and Cable Loss.

Receiver setting: RBW = 100KHz
 VBW = 300KHz



TEST REPORT No.: (5215)280-0954(Revision)
Supersede Technical Report No.: (5215)280-0954

Radiated Emissions (9kHz – 1GHz)

Test Requirement: FCC Part 15 Section 15.209
Test Method: ANSI C63.4
Test Date(s): 2015-11-02
Temperature: 24.0 °C
Humidity: 63.0 %
Atmospheric Pressure: 101.8 kPa
Mode of Operation: Transmission mode
Tested Voltage: 9Vd.c. ("6F22" size battery x 1)

Limits for Radiated Emissions [FCC 47 CFR 15.209]:

Frequency Range [MHz]	Quasi-Peak Limits [μV/m]	Measurement Distance m
0.009-0.490	2400/F(kHz)	300
0.490-1.705	24000/F(kHz)	30
1.705-30	30	30
30-88	100	3
88-216	150	3
216-960	200	3
Above960	500	3



TEST REPORT No.: (5215)280-0954(Revision)
Supersede Technical Report No.: (5215)280-0954

Measurement Data

Test Result of (Transmission mode): PASS

Detection mode: Quasi-Peak

Frequency (MHz)	Polarity (H/V)	Antenna Factor and Cable Loss (dB/m)	Field Strength at 3m (dBμV/m)	Limit at 3m (dBμV/m)	Margin (dB)
99.714	H	12.0	25.8	43.5	-17.7
149.571	H	10.5	30.2	43.5	-13.3
199.428	H	9.8	26.8	43.5	-16.7
249.285	H	13.1	25.7	46.0	-20.3
299.142	H	13.8	31.2	46.0	-14.8
348.999	H	15.8	36.1	46.0	-9.9
398.856	H	17.5	37.8	46.0	-8.2
448.713	H	17.9	37.9	46.0	-8.1
498.570	H	19.1	32.9	46.0	-13.1
548.427	H	20.3	44.4	46.0	-1.6
598.284	H	20.7	43.0	46.0	-3.0
648.141	H	20.4	37.2	46.0	-8.8

Frequency (MHz)	Polarity (H/V)	Antenna Factor and Cable Loss (dB/m)	Field Strength at 3m (dBμV/m)	Limit at 3m (dBμV/m)	Margin (dB)
99.714	V	12.0	24.6	43.5	-18.9
149.571	V	10.5	29.7	43.5	-13.8
199.428	V	9.8	26.4	43.5	-17.1
249.285	V	13.1	25.3	46.0	-20.7
299.142	V	13.8	28.2	46.0	-17.8
348.999	V	15.8	33.3	46.0	-12.7
398.856	V	17.5	37.6	46.0	-8.4
448.713	V	17.9	38.5	46.0	-7.5
498.570	V	19.1	33.7	46.0	-12.3
548.427	V	20.3	44.2	46.0	-1.8
598.284	V	20.7	39.6	46.0	-6.4
648.141	V	20.4	34.7	46.0	-11.3

Note: Field Strength includes Antenna Factor and Cable Loss.

Receiver setting: RBW = 120KHz
 VBW = 120KHz

TEST REPORT No.: (5215)280-0954(Revision)
Supersede Technical Report No.: (5215)280-0954

Test Results

Radiated Emissions (30MHz – 1GHz)

Test Requirement: FCC Part 15 Section 15.109
Test Method: ANSI C63.4
Test Date(s): 2015-10-13
Temperature: 29.0 °C
Humidity: 60.0 %
Atmospheric Pressure: 101.2 kPa
Mode of Operation: Receiver mode
Tested Voltage: 9Vd.c. ("6F22" size battery x 1)

Test Method:

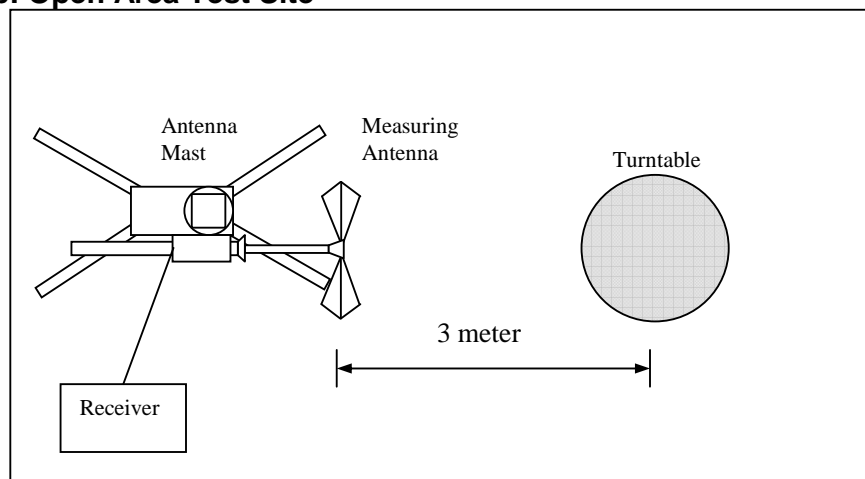
Radiated emissions measurements are investigated and taken pursuant to the procedures of ANSI C63.4 – 2009.

The equipment under test (EUT) was placed on a non-conductive turntable with dimensions of 1.5m x 1m and 0.8m high above the ground. 3m from the EUT, a broadband antenna mounting on the mast received the signal strength. During the test, each emission was maximized by: having the EUT continuously working, investigated all operating modes, rotated about all 3 axis (X, Y & Z) and considered typical configuration to obtain worst position, manipulating interconnecting cables, For battery operated equipment, the equipment tests shall be perform using new battery. The turntable was rotated to maximize the emission level. The antenna was then moving along the mast from 1m up to 4m until no more higher value was found. Both horizontal and vertical polarization of the antenna were placed and investigated.

For below 30MHz, a loop antenna with its vertical plane is place 3m from the EUT and rotated about its vertical axis for maximum response at each azimuth about the EUT. And the centre of the loop shall be 1m above the ground.

Location: The Roof, Westin Centre, 26 Hung To Road, Kwun Tong, Kowloon, Hong Kong

Test Setup: Open Area Test Site





TEST REPORT No.: (5215)280-0954(Revision)
Supersede Technical Report No.: (5215)280-0954

Limits for Radiated Emission: FCC Part 15.109

Frequency Range	Limits
[MHz]	[dBμV/m @ 3m]
30-88	40.0
88-216	43.5
216-960	46.0
Above 960	54.0

Measurement Data

Test Result of (Receiver mode): PASS

Detection mode: Quasi-Peak

Frequency (MHz)	Polarity (H/V)	Antenna Factor and Cable Loss (dB/m)	Field Strength at 3m (dBμV/m)	Limit at 3m (dBμV/m)	Margin (dB)
46.44	H	11.2	33.5	40.0	-6.5
49.80	H	10.0	32.8	40.0	-7.2
114.64	H	12.9	23.5	43.5	-20.0
140.60	H	11.8	23.5	43.5	-20.0
145.12	H	11.1	23.7	43.5	-19.8
266.12	H	13.5	24.6	46.0	-21.4

Frequency (MHz)	Polarity (H/V)	Antenna Factor and Cable Loss (dB/m)	Field Strength at 3m (dBμV/m)	Limit at 3m (dBμV/m)	Margin (dB)
46.44	V	11.2	34.8	40.0	-5.2
49.80	V	10.0	33.9	40.0	-6.1
114.64	V	12.9	23.7	43.5	-19.8
140.60	V	11.8	24.0	43.5	-19.5
145.12	V	11.1	23.9	43.5	-19.6
266.12	V	13.5	24.8	46.0	-21.2

Note: Field Strength includes Antenna Factor and Cable Loss.

Receiver setting: RBW = 120KHz
 VBW = 120KHz



TEST REPORT No.: (5215)280-0954(Revision)
Supersede Technical Report No.: (5215)280-0954

26dB Bandwidth of Fundamental Emission

Test Requirement: FCC 47 CFR 15.235
Test Method: ANSI C63.4
Test Date(s): 2015-10-13
Temperature: 29.0 °C
Humidity: 60.0 %
Atmospheric Pressure: 101.2 kPa
Mode of Operation: Transmission mode
Tested Voltage: 9Vd.c. ("6F22" size battery x 1)

Test Method:

The bandwidth is measured at an amplitude level reduced from the reference level by a specified ratio. The reference level is the level of the highest amplitude signal observed from the transmitter at the fundamental frequency. Once the reference level is established, the equipment is conditioned with typical modulating signal to produce the worst-case (i.e. the widest) bandwidth.

Limits for 26dB Bandwidth of Fundamental Emission:

Frequency [MHz]	26dB Bandwidth [KHz]	Limits [MHz]
49.857	9.00	within 49.82-49.90

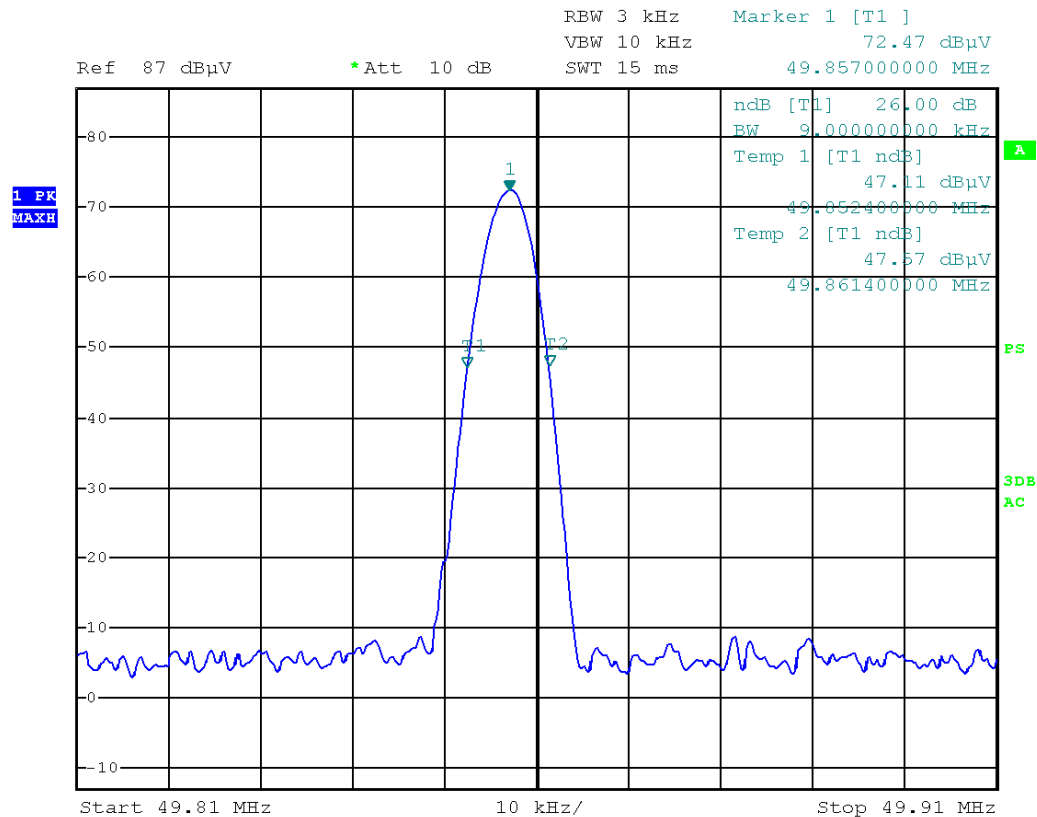


BUREAU
VERITAS

TEST REPORT No.: (5215)280-0954(Revision)
Supersede Technical Report No.: (5215)280-0954

Measurement Data

Test Result of 26dB Bandwidth of Fundamental Emission: PASS



Date: 13.OCT.2015 10:08:52

**TEST REPORT No.: (5215)280-0954(Revision)
Supersede Technical Report No.: (5215)280-0954**

Photographs of EUT

Front View of the product



Rear View of the product



Top View of the product



Bottom View of the product



Side View of the product



Side View of the product



Battery compartment



Battery Cover



TEST REPORT No.: (5215)280-0954(Revision)
Supersede Technical Report No.: (5215)280-0954

Photographs of EUT

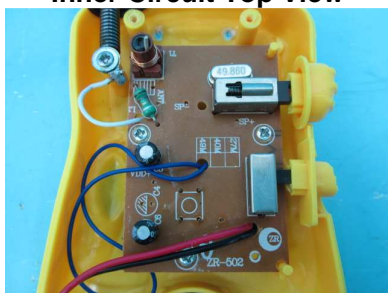
Internal View of the product



Internal View of the product



Inner Circuit Top View



Inner Circuit Bottom View



TEST REPORT No.: (5215)280-0954(Revision)
Supersede Technical Report No.: (5215)280-0954

Measurement of Radiated Emission Test Set Up



******* End of Report *******