

NEO-GAIT

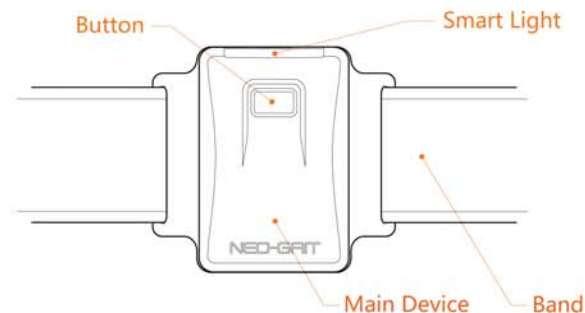
INSTRUCTION

Supplier : Shangda (Beijing) Medical Technologies, LLC.
Address : 103 Beiqing Road, HaiDian District, Beijing
Tel : 010-82582991
URL : support.orthoday.com

INSTRUCTION

MODEL : NG01
Shangda (Beijing) Medical Technologies, LLC.

Product View



Sensor : Attitude Sensor	Communications : 4.0BLE
Battery Capacity : 180mAh	Battery Type : Lithium Battery
Protection Level : IP45	Working Temperature : -10°C-50°C
Strap Material : Neoprene	Length of the Band : 320mm
Requirements of the product : Android4.4 and above/iOS8 and above	

All technical information is subject to actual performance, Shangda reserves the right of final interpretation of the technical information

Safety Information

- Using this device under doctor's guidance.
- Your mobile device need to support 4.0BLE. Make sure both devices are within the bluetooth range of 5m.
- Do not disassemble the device.
- Do not throw the device in the fire, the battery may explode.
- Do not store the device close to the flame.
- Do not store the device in extremely hot or extremely cold environment.
- Do not wear the device too tightly, feeling comfortable is the best state.
- Do not charge the device for more than one hour.
- Stop charging immediately when it gets overheated.
- Never soak the device in any liquid.
- Clean the device surface with a damp cloth and use water to clean the band.
- Do not use caustic detergents to clean the device.
- Please read all above descriptions, pay attention to the relevant warnings.

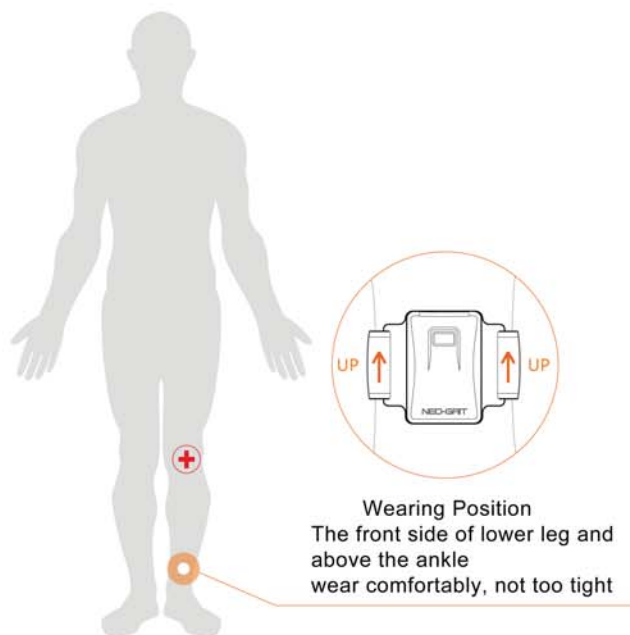
After-sales Service

After-sales service commitment as follows : Shangda inc implements after-sales service on the basis of "Product Quality Law of the People's Republic of China" and "Law of the PRC on the protection of the rights and interests of consumers". Users enjoy the right of return and replacement of the product accordance with the provisions in case of keeping the invoices.

- 1、 You have the right of returning and replacing the product for free if the product fails within seven days since your purchase. The product need to be inspected by Shangda according to the definition of "Malfunction".
- 2、 You have the right of replacing the product for free if the product fails within eight to fifteen days since your purchase. The product need to be inspected by Shangda according to the definition of "Malfunction".

Name	Malfunction
Product	Functions listed in the instruction failed. Button do not work. Smart light do not work. Product can not synchronize with mobile device. Function failure caused by structural or material factors
Battery	Products can not be charged

1 Wearing a Product



4 Start Training



Connection success, let's start training !

2 Mobile APP Installation

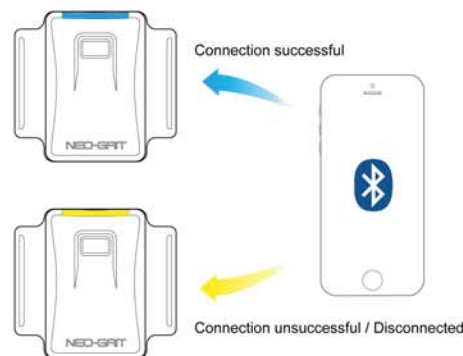
GUDIAN Search app



Scan QR code and download APP



5 Smart Light Modes



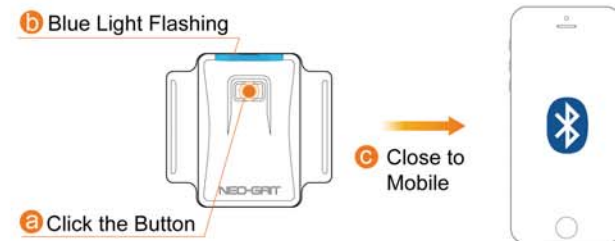
- Click the button, the smart light glow in blue : Bluetooth is connecting.
- The smart light shows solid blue : Bluetooth successfully connected, the device start to track user's exercise state.
- The smart light pulses blue : Device is standby.
- The smart light pulses yellow : Bluetooth connection is not successful / disconnected.

3 Bluetooth Connection

1、APP

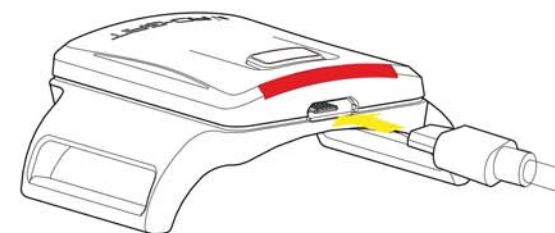


2、Product



When the devices are connected via Bluetooth for the first time, the distance between the two needs to be 10 cm or less

6 Charging



- The smart light pulses red : Device needs to be charged.
- The smart light pulses green : Device is charging.
- The smart light shows solid white : Battery fully charged.

The charging time must be less than one hour.

FCC statements:

This device complies with part 15 of the FCC rules. Operation is subject to the following two conditions: (1) this device may not cause harmful interference, and (2) this device must accept any interference received, including interference that may cause undesired operation.

NOTE: The manufacturer is not responsible for any radio or TV interference caused by unauthorized modifications or changes to this equipment. Such modifications or changes could void the user's authority to operate the equipment.

Federal Communication Commission (FCC) Radiation Exposure Statement

Power is so low that no RF exposure calculation is needed.