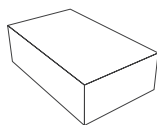


# Getting Started

## What's in the box



Box



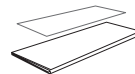
EZ Holder



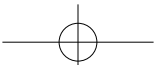
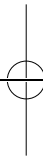
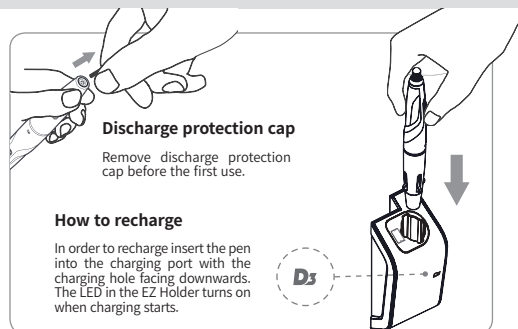
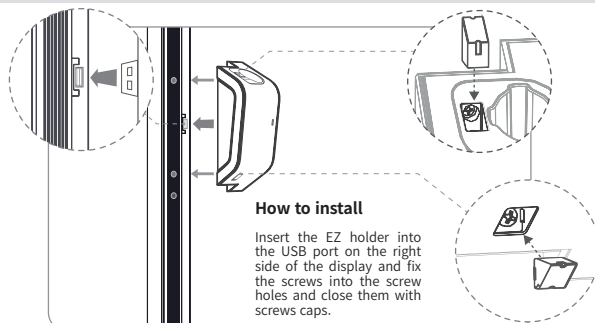
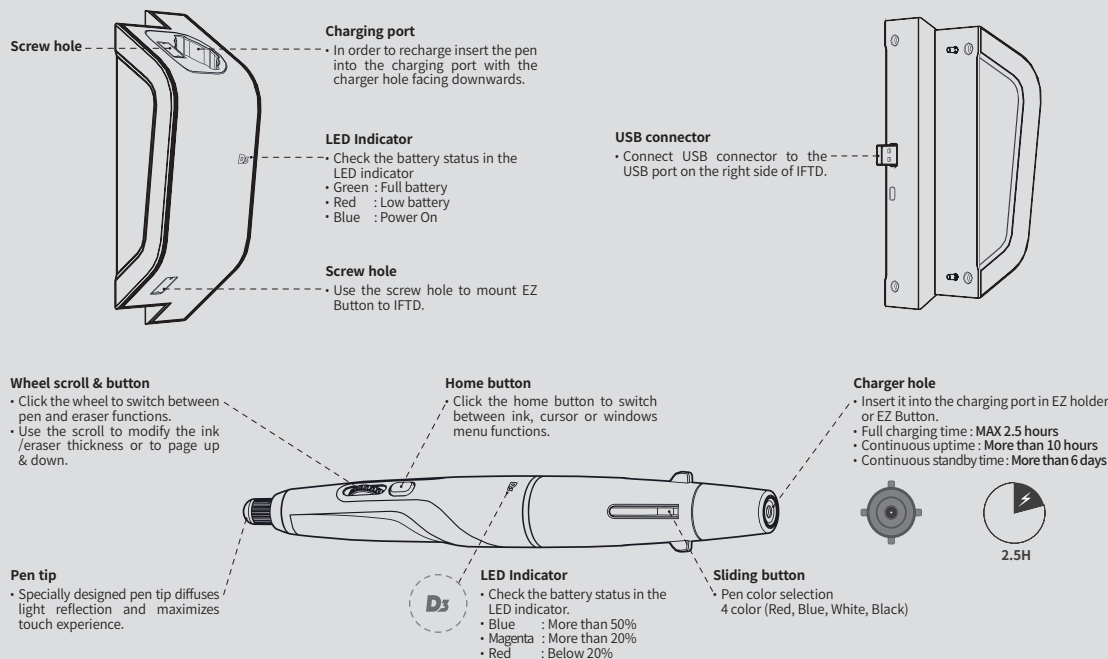
EZ Pen



Screw Cap x2



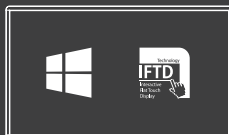
Quick Manual



## System Environment

EZ Pen & holder can be used in the following settings.

- IFTD S/G/M/B type
- WINDOWS 7 or newer
- D3 Board



## Driver Installation

EZ Pen & Buttons require a driver installation. Download the drivers at the link below.

[www.edgeind.com/download](http://www.edgeind.com/download)

## EZ Learning

Visit the link below for more information.

[www.edgeind.com/ez\\_learning](http://www.edgeind.com/ez_learning)



## Product Features



- RF - 2.4GHz ISM Band (2.405 ~ 2.470)
- Pen holder - Pen battery charging (4.2V 50mA)
- LED Battery indicator
- Power input - 5V (USB)
- Dimensions (W x H x D mm) 171 x 69 x 57



- RF - 2.4GHz ISM Band (2.405 ~ 2.470)
- Easy to change 4 colors - sliding color buttons
- Wheel up/down & Wheel button
- LED Battery indicator - 3level(Blue, Magenta, Red)
- Battery - Li-ion 3.7V 100mAh
- Dimensions (H x Ø mm) 178 x 22

EZCONNECT™  
TECHNOLOGY

Holder & Pen



151224\_EZ\_Holder\_Pen.indd 5-8

2015. 12. 31. 오후 12:45

151224\_EZ\_Holder\_Pen.indd 1-4

2015. 12. 31. 오후 12:45

### FCC Information to User

This equipment has been tested and found to comply with the limits for a Class B digital device, pursuant to Part 15 of the FCC Rules. These limits are designed to provide reasonable protection against harmful interference in a residential installation. This equipment generates, uses and can radiate radio frequency energy and, if not installed and used in accordance with the instructions, may cause harmful interference to radio communications. However, there is no guarantee that interference will not occur in a particular installation. If this equipment does cause harmful interference to radio or television reception, which can be determined by turning the equipment off and on, the user is encouraged to try to correct the interference by one of the following measures:

- Reorient or relocate the receiving antenna.
- Increase the separation between the equipment and receiver.
- Connect the equipment into an outlet on a circuit different from that to which the receiver is connected.
- Consult the dealer or an experienced radio/TV technician for help.

### Caution

Modifications not expressly approved by the party responsible for compliance could void the user's authority to operate the equipment.

**FCC Compliance Information :** This device complies with Part 15 of the FCC Rules. Operation is subject to the following two conditions: (1) This device may not cause harmful interference, and (2) this device must accept any interference received, including interference that may cause undesired operation

