

FD-001 User Manual

Thank you for choosing the smart anti-lost products **FD-001** based on Bluetooth. **FD-001** is a kind of Bluetooth Bluetooth Low-energy product which based on the newest Bluetooth 4.0 version. It can chain user's easy-lost & valuable belongings (such as keys, handbag etc.), kids or pets together with smart phones through specified App software within a setting Bluetooth connection distance. In the effective distance it can realize the functions of anti-lost, looking for smart phones, self-portrait and voice recording.

The effective distance of **FD-001** is 75 Feet in open range without barrier. With this device, your belongings, kids and pets won't leave your attentions any more.

FD-001 use Cr2032 Lithium Coin Battery which is easy to get from markets, and it works for almost half a year.

Switch on/off

Switch on: Press and hold the button on **FD-001** for 3 seconds until you heard the Beep twice

Switch off: Press and hold the button on **FD-001** for 3 seconds until the long "Beep" sound.



iOS



Android

Connection

- FD-001** will connect the smart phone automatically when power on, if it shows "disconnected" on the App, please click the "Connect" button to connect it again, (Note: The bluetooth name of **FD-001** is **ITAG**.)
- Click the button "🔍" to find more connectable **FD-001** devices, such as car keys, bags and so on. (Note: Click the arrow icon will turn to submenu, such as add photo for **FD-001**, rename and set the ring tone etc.)



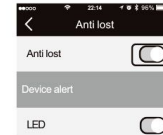
- Press the "✕" button to enter into "Delete" submenu to remove the item which you don't need, or slide this item to left on "device list" interface, click "-" to remove it out of the device list.

Do Not Disturb Mode

On the "Setting" interface, switch "Do not disturb" on, alert function of all devices will be shut down.



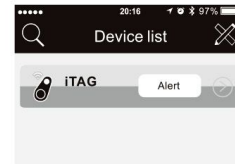
On the "Device" interface, enter into submenu "**FD-001**" item, click "Anti lost" to set a unique feature for alert function for each **FD-001**, such as shut off the alert for one of connected



Setting for Alert

As shown in the image

- Double click the button on **FD-001** to trigger the alert on the smart phone.
- Click the red flash button to stop the phone alert.
- Click "Alert" button, **FD-001** alerts, and click the "Stop Alert" will stop the alert from

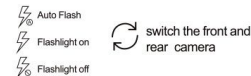


Photograph

As shown in the image

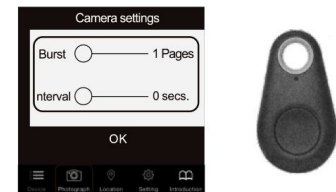
Press the "Photograph" button, it will turns to camera mode.

- Press top right and left to set the flashlight and camera:



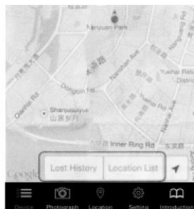
2. Press the button on the right button, you can set for burst shooting and interval timer shooting.

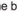
Press the button on  once, it works as a remote shutter to take photos.



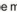
Location

As shown in the image



Location list: when you park your car, press the button on , it will marks your current location on the map. Press the "Location list" and you will find where your vehicle is with easy tracking when you leave any big or underground parking lot



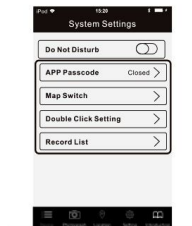
Lost history: If the  is lost, A pin-drop will be marked automatically on Map to tell you the site it was lost. just press "lost history" to find the record.

Remark: To delete the list, just scroll left the list and press the "Delete" menu

Setting

In order to experience the functions of  better, enter into the setting menu to set for your .

As shown in the image



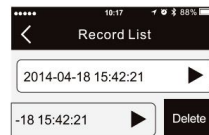
APP password setting

Map switch: choose Google map or Baidu map

Double click setting: setting for alarm or voice recording

Record list: The recorded voice would be stored under this state.


Simply press Play button to play/pause and scroll left the list to delete it.



Version: Version of current App

Battery replacement



Battery is in the back of the . Use a coin as a key and twist it to right to open the battery cover, then replace the battery. The used Cr2032 cell is easy to get in the market. After replacement put the cover back and close it to left also with the coin.

NOTE: This equipment has been tested and found to comply with the limits for a Class B digital device, pursuant to part 15 of the FCC Rules. These limits are designed to provide reasonable protection against harmful interference in a residential installation. This equipment generates uses and can radiate radio frequency energy and, if not installed and used in accordance with the instructions, may cause harmful interference to radio communications. However, there is no guarantee that interference will not occur in a particular installation. If this equipment does cause harmful interference to radio or television reception, which can be determined by turning the equipment off and on, the user is encouraged to try to correct the interference by one or more of the following measures:

- Reorient or relocate the receiving antenna.
- Increase the separation between the equipment and receiver.
- Connect the equipment into an outlet on a circuit different from that to which the receiver is connected.
- Consult the dealer or an experienced radio/TV technician for help

Changes or modifications not expressly approved by the party responsible for compliance could void the user's authority to operate the equipment. This device complies with Part 15 of the FCC Rules. Operation is subject to the following two conditions:

- (1) this device may not cause harmful interference, and
- (2) this device must accept any interference received, including interference that may cause undesired operation.