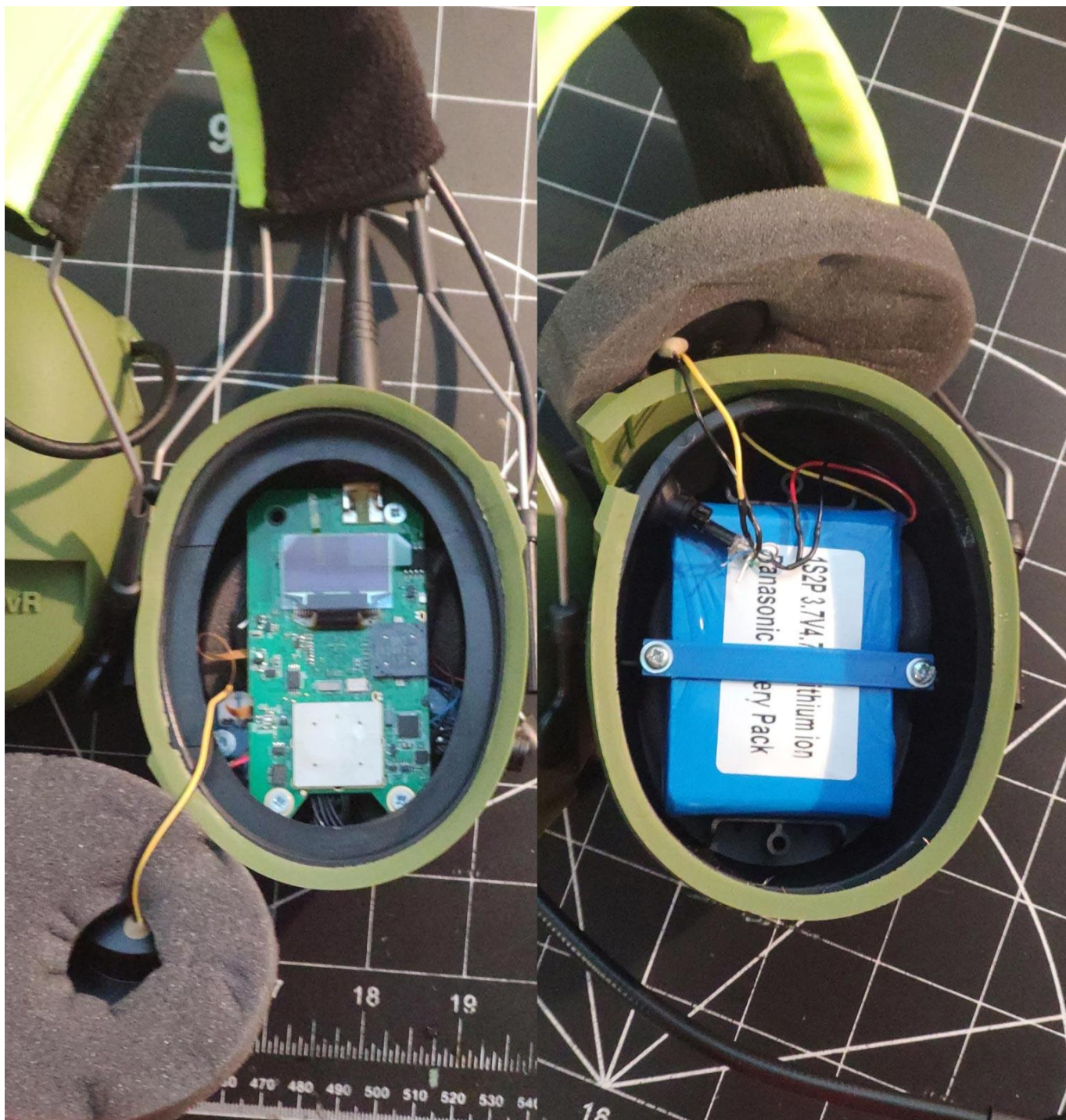


## TECHNICAL DOCUMENTATION FILES

**MODEL : APPI-CovR**

### PRODUCT SHELL INTERIOR PHOTOS



**Figure 1. APPI-CovR Earmuffs interior product photos of the right PCB compartment, and the left Li-Ion battery compartment.**



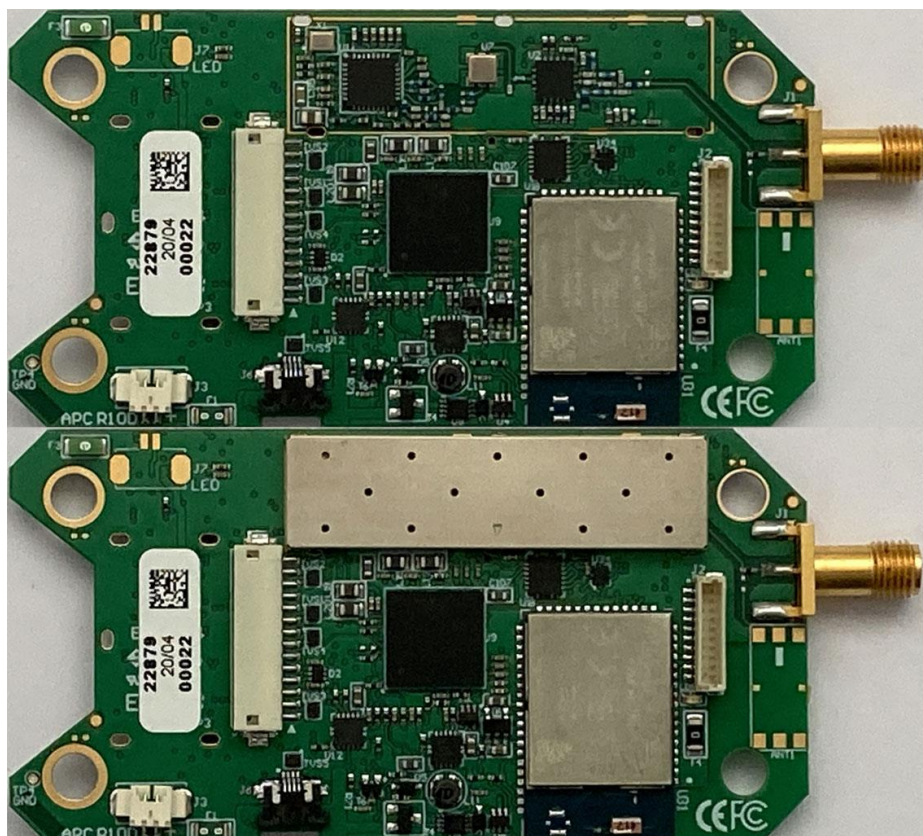


Figure 2. APPI-CovR Earmuffs interior. Radio PCB, recto, with and without EM shielding.

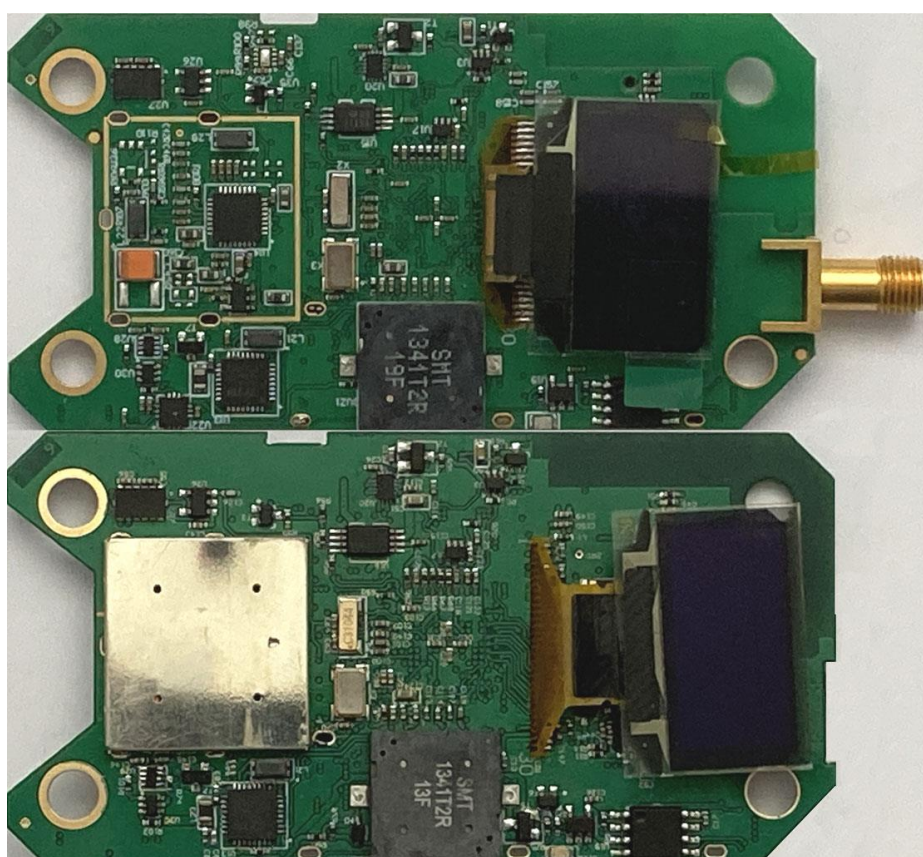


Figure 3. APPI-CovR Earmuffs interior. Radio PCB, verso, with and without EM shielding.

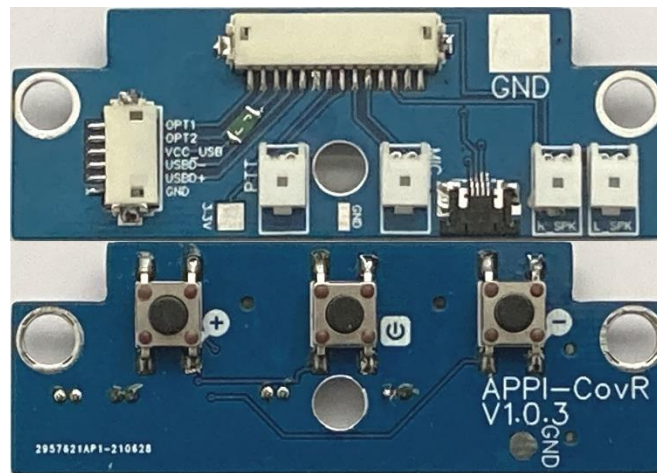


Figure 4. APPI-CovR Earmuffs interior. PCB v1.0 for audio connections and button switches, recto-verso.