



TEST REPORT
FCC ID: 2AG63-WSMT
For
WHISPER USA INC
Mini Transmitter

Model No. : WSMT, WSMT V2

Trade name : **Whisper®**

Prepared for : WHISPER USA INC

Address : 7700 N KENDALL DR STE 405 MIAMI, FL 33156

Prepared by : Shenzhen Alpha Product Testing Co., Ltd.

Address : Building B, East Area of Nanchang Second, Industrial Zone,
Gushu 2nd Road, Bao'an, Shenzhen, China

Report No. : T1862236 01

Date of Receipt : November 10, 2016

Date of Test : November 10 – November 22, 2016

Date of Report : November 22, 2016

Version Number : REV0

TABLE OF CONTENT

Description	Page
1 General Information-----	4
1.1 Description of Device (EUT) -----	4
1.2 Description of Test Facility -----	5
2 EMC Equipment List-----	5
3 Test Procedure-----	6
4 Summary of Measurement-----	7
4.1 Summary of test result -----	7
4.2 Test connection -----	7
4.3 Assistant equipment used for test -----	7
4.4 Test mode-----	8
4.5 Test Conditions -----	8
4.6 Measurement Uncertainty (95% confidence levels, k=2) -----	8
5 Spurious Emission-----	9
5.1 Radiation Emission-----	9
5.2 Radiation Emission Limits(15.209&249) -----	9
5.3 Test Setup -----	10
5.4 Test Procedure -----	12
5.5 Test Equipment Setting For emission test Result.-----	12
5.6 Test Condition -----	13
5.7 Test Result-----	13
6 POWER LINE CONDUCTED EMISSION-----	19
6.1 Conducted Emission Limits(15.207)-----	19
6.2 Test Setup -----	19
6.3 Test Procedure -----	20
6.4 Test Results -----	20
7 Bandwidth-----	23
7.1 Test limit-----	23
7.2 Method of measurement -----	23
7.3 Test Setup -----	23
7.4 Test Results -----	23
8 Antenna Requirement-----	26
8.1 Standard Requirement -----	26
8.2 Antenna Connected Construction -----	26
8.3 Result -----	26
9 Photographs of Test Setup-----	27
9.1 Photos of Radiated emission -----	27
9.2 Photos of Power Line Conducted Emission-----	28
10 Photographs of EUT -----	29

DECLARATION

Applicant : WHISPER USA INC
Manufacturer : Shenzhen Alcors Technology Co.,Ltd
Product : Mini Transmitter
(A)Model No. : WSMT, WSMT V2
(B)Trade Name : **Whisper®**
(C)Power supply : DC 3.7V from battery, DC 5V From USB Port

Measurement Standard Used:

FCC Rules and Regulations Part 15 Subpart C Section 15.249: 2016, ANSI C63.10-2013

The device described above is tested by Shenzhen Alpha Product Testing Co., Ltd. to determine the maximum emission levels emanating from the device. The maximum emission levels are compared to the FCC Part 15 Subpart B Class B limits both conducted and radiated emissions. The test results are contained in this test report and Shenzhen Alpha Product Testing Co., Ltd. is assumed of full responsibility for the accuracy and completeness of these tests.

After the test, our opinion is that EUT compliance with the requirement of the above standards.

This report applies to above tested sample only. This report shall not be reproduced in parts without written approval of Shenzhen Alpha Product Testing Co., Ltd.

Tested by (name + signature).....:

Reak Yang
Test Engineer


.....

Approved by (name + signature).....:

Simple Guan
Project Manager


.....

Date of issue.....

November 22, 2016

1 General Information

1.1 Description of Device (EUT)

EUT	: Mini Transmitter
Model No.	: WSMT, WSMT V2
Trade mark	: Whisper®
Power supply	: DC 3.7V from battery, DC 5V From USB Port
Radio Technology	: 2.4GHz
Operation frequency	: 2401-2483MHz
Channel No.	83 Channels
Modulation	: GFSK
Antenna Type	: PCB Antenna, max gain 0dBi.
Applicant	: WHISPER USA INC
Address	: 7700 N KENDALL DR STE 405 MIAMI, FL 33156
Manufacturer	: Shenzhen Alcors Technology Co.,Ltd
Address	: 4 th floor south, Bldg 23, LianChuang Sci& Tech Park, Bulan Road, LongGang District, Shenzhen, China

1.2 Description of Test Facility

Shenzhen Alpha Product Testing Co., Ltd.

Building B, East Area of Nanchang Second, Industrial Zone, Gushu 2nd Road, Bao'an, Shenzhen, China

March 25, 2015 File on Federal Communication Commission

Registration Number: 203110

July 18, 2014 Certificated by IC

Registration Number: 12135A

2 EMC Equipment List

Equipment	Manufacture	Model No.	Serial No.	Due cal.	Cal Interval
3m Semi-Anechoic	ETS-LINDGREN	N/A	SEL0017	2017.01.16	1 Year
Spectrum analyzer	Agilent	E4407B	MY49510055	2017.01.16	1 Year
Receiver	R&S	ESCI	101165	2017.01.16	1 Year
L.I.S.N.#1	Schwarzbeck	NSLK8126	8126466	2017.01.16	1 Year
L.I.S.N.#2	ROHDE&SCHWARZ	ENV216	101043	2017.01.16	1 Year
Bilog Antenna	SCHWARZBECK	VULB 9168	9168-438	2018.01.18	2Year
Horn Antenna	SCHWARZBECK	BBHA 9120 D	BBHA 9120 D(1201)	2017.01.20	2Year
Horn Antenna	SCHWARZBECK	BBHA 9170	BBHA 9170 D(1432)	2017.01.20	2Year
Active Loop Antenna	Beijing Daze	ZN30900A	SEL0097	2017.01.16	1 Year
Cable	Resenberger	SUCOFLEX 104	MY6562/4	2017.01.16	1 Year
Cable	Resenberger	SUCOFLEX 104	309972/4	2017.01.16	1 Year
Cable	Resenberger	SUCOFLEX 104	329112/4	2017.01.16	1 Year
Pre-amplifier	Agilent	8449B	3008A02664	2017.01.18	1 Year
Pre-amplifier	HP	HP8347A	2834A00455	2017.01.18	1 Year

3 Test Procedure

POWER LINE CONDUCTED INTERFERENCE: The test procedure used was ANSI Standard C63.10-2013 using a 50 u H LISN. Both Lines were observed. The bandwidth of the receiver was 10kHz with an appropriate sweep speed. The ambient temperature of the EUT was 25°C with a humidity of 58%.

RADIATION INTERFERENCE: The test procedure used was ANSI Standard C63.10-2013 using a ANRITSU spectrum analyzer with a pre-selector. The analyzer was calibrated in dB above a micro volt at the output of the antenna. The resolution bandwidth was 100kHz and the video bandwidth was 300 kHz up to 1 GHz and 1 MHz with a video BW of 3MHz above 1 GHz. The ambient temperature of the EUT was 25°C with a humidity of 58%.

FORMULA OF CONVERSION FACTORS: The Field Strength at 3m was established by adding the meter reading of the spectrum analyzer (which is set to read in units of dBuV) to the antenna correction factor supplied by the antenna manufacturer and cable loss. The antenna correction factors and cable loss are stated in terms of dB. The gain of the Pre-selector was accounted for in the Spectrum Analyzer Meter Reading.

Example:

Freq (MHz) METER READING + ACF + CABLE = FS

33.20 dBuV + 10.36 dB + 0.9 dB= 44.46 dBuV/m @ 3m

ANSI STANDARD C63.10-2013 10.1.7 MEASUREMENT PROCEDURES: The EUT was placed on a table 80 cm high and with dimensions of 1m by 1.5m. The EUT was placed in the center of the table (1.5m side). The table used for radiated measurements is capable of continuous rotation. When an emission was found, the table was rotated to produce the maximum signal strength. At this point, the antenna was raised and lowered from 1m to 4m. The antenna was placed in both the horizontal and vertical planes. The situation was similar for the conducted measurement except that the table did not rotate. The EUT was setup as described in ANSI Standard C63.10-2013 10.1.7 with the EUT 40 cm from the vertical ground wall.

4 Summary of Measurement

4.1 Summary of test result

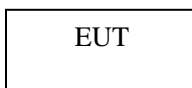
Test Item	Test Requirement	Standard Paragraph	Result
Spurious Emission	FCC PART 15: 2016	Section 15.249&15.209	Compliance
Conduction Emission	FCC PART 15: 2016	Section 15.207	Compliance
Occupied bandwidth	FCC PART 15: 2016	Section 15.215	Compliance
Band edge Requirement	FCC PART 15: 2016	Section 15.249	Compliance
Antenna Requirement	FCC PART 15: 2016	Section 15.203	Compliance

Note: The EUT has been tested as an independent unit. And Continual Transmitting in maximum power.

4.2 Test connection

EUT was placed on a turn table, which is 0.8 meter high above ground for below 1GHz, 1.5 meter high above ground for above 1GHz.

TX Mode:



4.3 Assistant equipment used for test

Description	:	Notebook
Manufacturer	:	ACER
Model No.	:	ZQR
Note: FCC DOC approved.		

4.4 Test mode

The EUT was used to control EUT work in Continuous TX mode, and select test channel, wireless mode. New battery is used during all test.

Channel List

Channel No.	Frequency (MHz)	Channel No.	Frequency (MHz)	Channel No.	Frequency (MHz)
1	2401	40	2440	81	2481
2	2402	41	2441	82	2482
3	2403	42	2442	83	2483
...		

4.5 Test Conditions

Temperature range	21-25°C
Humidity range	40-75%
Pressure range	86-106kPa

4.6 Measurement Uncertainty (95% confidence levels, k=2)

Item	MU	Remark
Uncertainty for Power point Conducted Emissions Test	2.71dB	
Uncertainty for Radiation Emission test in 3m chamber (below 30MHz)	2.13 dB	Polarize: V
	2.57dB	Polarize: H
Uncertainty for Radiation Emission test in 3m chamber (30MHz to 1GHz)	3.90 dB	Polarize: V
	3.92dB	Polarize: H
Uncertainty for Radiation Emission test in 3m chamber (1GHz to 25GHz)	4.26 dB	Polarize: H
	4.28 dB	Polarize: V
Uncertainty for radio frequency	1×10-9	
Uncertainty for DC and low frequency voltages	0.06%	

5 Spurious Emission

5.1 Radiation Emission

5.2 Radiation Emission Limits(15.209&249)

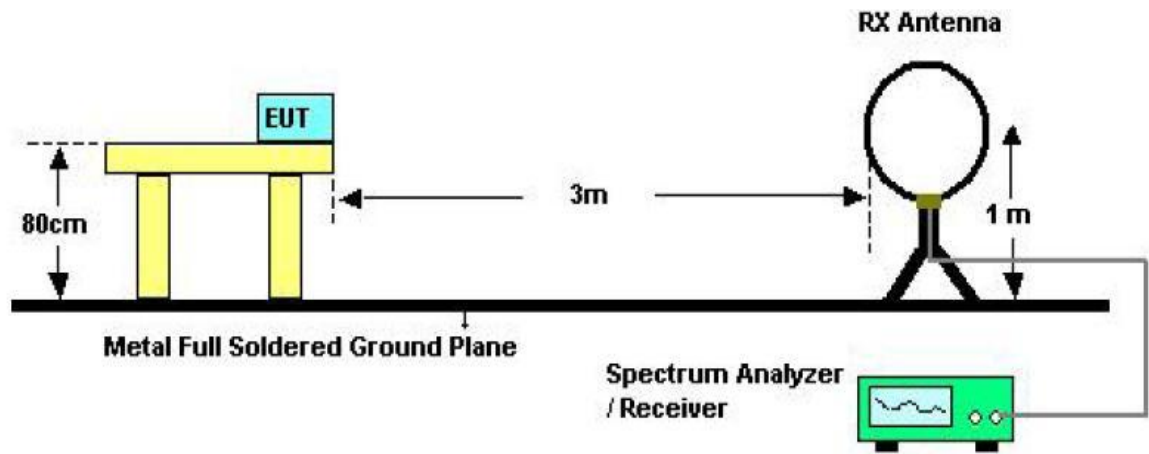
Frequency (MHz)	Field Strength Limits at 3 metres (watts, e.i.r.p.)		
	uV/m	dB uV/m	Measurement distance(m)
0.009-0.490	2400/F(kHz)	XX	300
0.490-1.705	24000/F(kHz)	XX	30
1.705-30	30	29.5	30
30~88	100(3nW)	40	3
88~216	150(6.8nW)	43.5	3
216~960	200(12nW)	46	3
Above960	500(75nW)	54	3
Carrier frequency		93.97(AV)	3
Carrier frequency		113.97(PK)	3

NOTE:

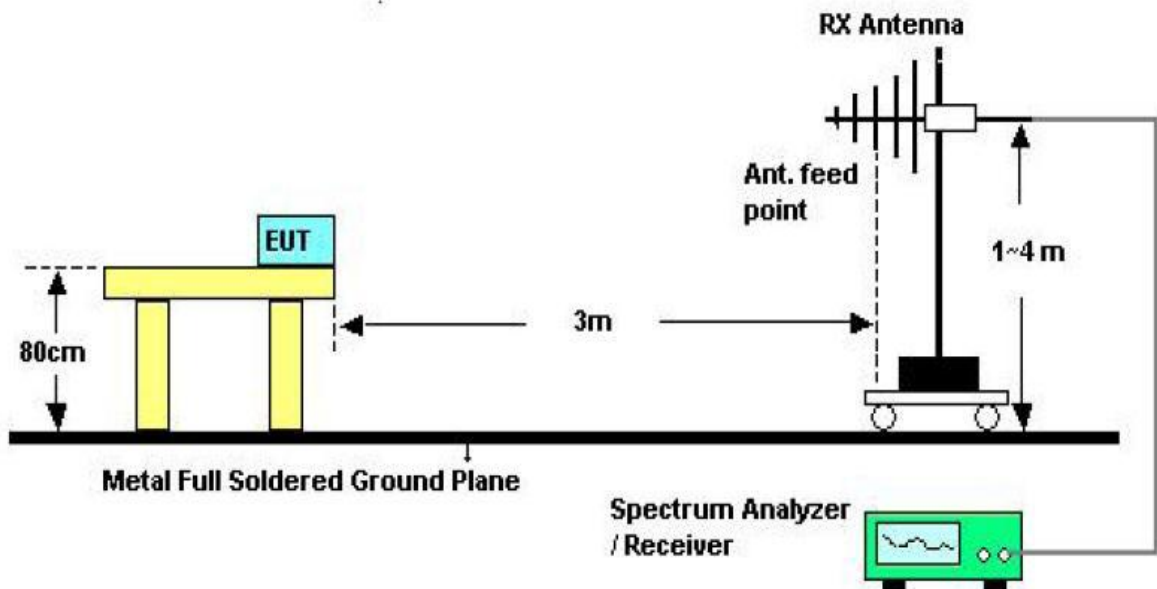
- The tighter limit applies at the band edges.
- Emission Level(dB uV/m)=20log Emission Level(uV /m)

5.3 Test Setup

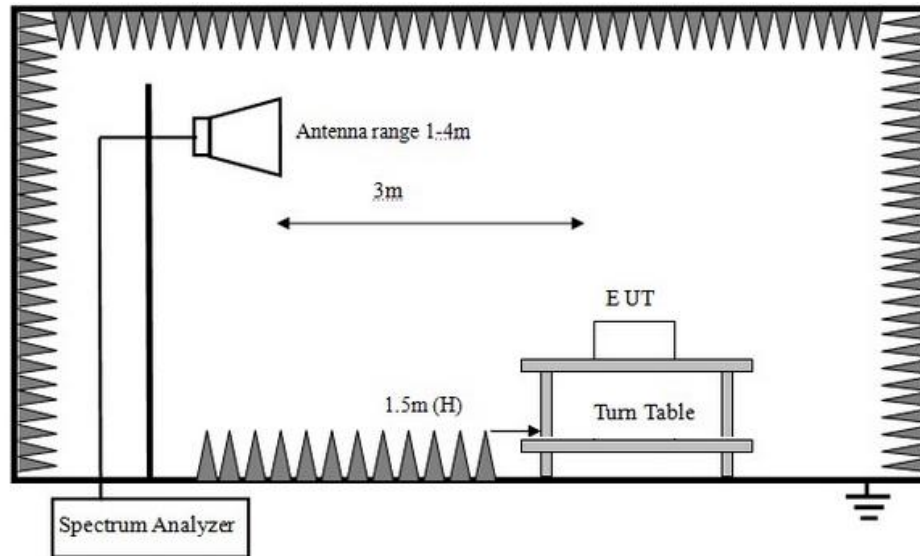
See the next page



Below 30MHz Test Setup



Above 30MHz Test Setup



Above 1GHz Test Setup

Note: For harmonic emissions test a appropriate high pass filter was inserted in the input port of AMP.

5.4 Test Procedure

- a) The measuring distance of 3m shall be used for measurements at frequency up to 1GHz and above 1GHz, The EUT was placed on a rotating 0.8 m high above ground for below 1GHz and 1.5m high for above 1GHz testing, The table was rotated 360 degrees to determine the position of the highest radiation
- b) The Test antenna shall vary between 1m and 4m, Both Horizontal and Vertical antenna are set of make measurement.
- c) The initial step in collecting conducted emission data is a spectrum analyzer Peak detector mode pre-scanning the measurement frequency range. Significant Peaks are then marked. and then Qusia Peak Detector mode premeasured
- d) If Peak value comply with QP limit Below 1GHz. The EUT deemed to comply with QP limit. But the Peak value and average value both need to comply with applicable limit above 1GHz.
- e) For the actual test configuration, please see the test setup photo.
- f) Test for all x, y, z axes is performed and only the worst case of X xes was recorded in the test report.
- g) For the radiated emission test above 1GHz:
Place the measurement antenna away from each area of the EUT determined to be a source of emissions at the specified measurement distance, while keeping the measurement antenna aimed at the source of emissions at each frequency of significant emissions, with polarization oriented for maximum response. The measurement antenna may have to be higher or lower than the EUT, depending on the radiation pattern of the emission and staying aimed at the emission source for receiving the maximum signal. The final measurement antenna elevation shall be that which maximizes the emissions. The measurement antenna elevation for maximum emissions shall be restricted to a range of heights of from 1 m to 4 m above the ground or reference ground plane.

5.5 Test Equipment Setting For emission test Result.

9KHz~150KHz	RBW 200Hz	VBW 1KHz
150KHz~30MHz	RBW 9KHz	VBW 30KHz
30MHz~1GHz	RBW 120KHz	VBW 300KHz
Above 1GHz	RBW 1MHz	VBW 3MHz

5.6 Test Condition

Continual Transmitting in maximum power.

5.7 Test Result

We have scanned the 10th harmonic from 9KHz to the EUT.
Detailed information please see the following page.

From 9KHz to 30MHz: Conclusion: PASS

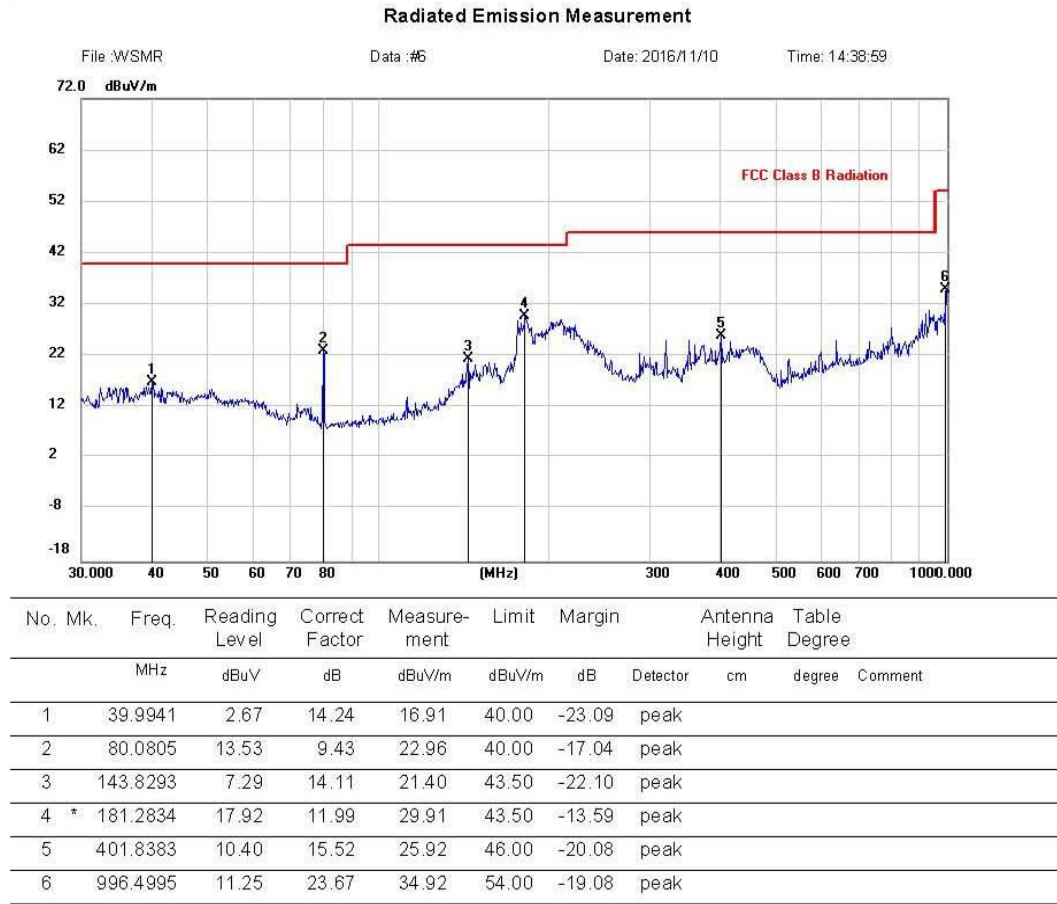
Note: The amplitude of spurious emissions which are attenuated by more than 20dB below the permissible value has no need to be reported.

Remark: Only show the test data of the worst Channel in this report.

From 30MHz to 1000MHz: Conclusion: PASS

Below 1GHz

H:



Note:1. *:Maximum data; x:Over limit; l:over margin.

2.Measurement=Reading Level+Correct Factor; Correct Factor=Antenna Factor+Cable Loss.

V:

Radiated Emission Measurement



No.	Mk.	Freq.	Reading	Correct	Measure-	Limit	Margin	Antenna	Table	
		MHz	Level	Factor	ment			Height	Degree	
			dBuV	dB	dBuV/m	dBuV/m	dB	cm	degree	Comment
1		32.1794	0.41	13.40	13.81	40.00	-26.19	peak		
2		44.4307	0.32	13.79	14.11	40.00	-25.89	peak		
3	*	80.0805	14.32	9.43	23.75	40.00	-16.25	peak		
4		143.8291	7.45	14.11	21.56	43.50	-21.94	peak		
5		183.8437	12.87	11.68	24.55	43.50	-18.95	peak		
6		475.4990	9.39	17.04	26.43	46.00	-19.57	peak		

Note: 1. *: Maximum data; x: Over limit; !: over margin.

2. Measurement = Reading Level + Correct Factor; Correct Factor = Antenna Factor + Cable Loss.

Notes: Above is below 1GHz test data. This report only shall the worst case mode for TX 2401MHz.

1GHz—25GHz Radiated emission Test result									
EUT: Mini Transmitter			M/N: WSMT						
Power: DC 3.7V from battery									
Test date: 2016-11-18			Test site: 3m Chamber			Tested by: Reak Yang			
Test mode: 2401MHz									
Antenna polarity: Vertical									
No	Freq (MHz)	Read Level (dBuV/m)	Antenna Factor (dB/m)	Cable loss(dB)	Amp Factor (dB)	Result (dBuV/m)	Limit (dBuV/m)	Margin (dB)	Remark
1	2401	90.02	27.61	3.94	34.97	86.60	114	27.40	PK
2	2401	81.87	27.61	3.94	34.97	78.45	94	15.55	AV
3	4802	56.94	31.29	5.70	34.19	59.74	74	14.26	PK
4	4802	44.77	31.29	5.70	34.19	47.57	54	6.43	AV
5	2400	56.38	27.62	3.94	34.97	52.97	74	21.03	PK
6	2400	45.76	27.62	3.94	34.97	42.35	54	11.65	AV
	/								
Antenna Polarity: Horizontal									
1	2401	92.43	27.61	3.94	34.97	89.01	114	24.99	PK
2	2401	84.28	27.61	3.94	34.97	80.86	94	13.14	AV
3	4802	57.64	31.29	5.70	34.19	60.44	74	13.56	PK
4	4802	45.78	31.29	5.70	34.19	48.58	54	5.42	AV
5	2400	57.34	27.62	3.94	34.97	53.93	74	20.07	PK
6	2400	46.89	27.62	3.94	34.97	43.48	54	10.52	AV
	/	/							
Note:									
1,Measuring frequency from 1GHz to 25GHz									
2,Spectrum Set for PK measure: RBW=1MHz, VBW=1MHz, Sweep time=Auto, Detector: PK									
2,Spectrum Set for AV measure: RBW=1MHz, VBW=3MHz, Sweep time=Auto, Detector: RMS									
3, Result = Read level + Antenna factor + cable loss-Amp factor									
4, All the other emissions not reported were too low to read and deemed to comply with FCC limit.									

EUT: Mini Transmitter					M/N: WSMT				
Power: DC 3.7V from battery									
Test date: 2016-11-18			Test site: 3m Chamber			Tested by: Reak Yang			
Test mode: 2441MHz									
Antenna polarity: Vertical									
No	Freq (MHz)	Read Level (dBuV/m)	Antenna Factor (dB/m)	Cable loss(dB)	Amp Factor (dB)	Result (dBuV/m)	Limit (dBuV/m)	Margin (dB)	Remark
1	2441	93.42	27.84	4.18	34.82	90.62	114	23.38	PK
2	2441	85.07	27.84	4.18	34.82	82.27	94	11.73	AV
3	4882	57.86	31.56	5.92	34.02	61.32	74	12.68	PK
4	4882	46.58	31.56	5.92	34.02	50.04	54	3.96	AV
	/	/							
Antenna Polarity: Horizontal									
1	2441	95.74	27.84	4.18	34.82	92.94	114	21.06	PK
2	2441	87.31	27.84	4.18	34.82	84.51	94	9.49	AV
3	4882	57.91	31.56	5.92	34.02	61.37	74	12.63	PK
4	4882	46.47	31.56	5.92	34.02	49.93	54	4.07	AV
	/	/							
Note:									
1, Measuring frequency from 1GHz to 25GHz									
2,Spectrum Set for PK measure: RBW=1MHz, VBW=1MHz, Sweep time=Auto, Detector: PK									
2,Spectrum Set for AV measure: RBW=1MHz, VBW=3MHz, Sweep time=Auto, Detector: RMS									
3, Result = Read level + Antenna factor + cable loss-Amp factor									
4, All the other emissions not reported were too low to read and deemed to comply with FCC limit.									

6 POWER LINE CONDUCTED EMISSION

6.1 Conducted Emission Limits(15.207)

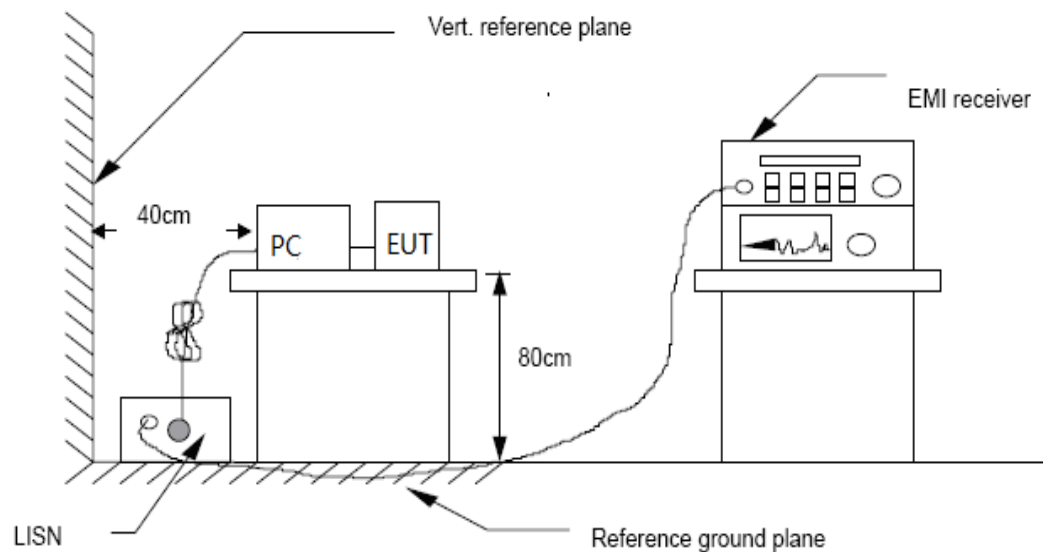
Frequency MHz	Limits dB(μ V)	
	Quasi-peak Level	Average Level
0.15 -0.50	66 -56*	56 - 46*
0.50 -5.00	56	46
5.00 -30.00	60	50

Notes: 1. *Decreasing linearly with logarithm of frequency.

2. The lower limit shall apply at the transition frequencies.

3. The limit decreases in line with the logarithm of the frequency in the range of 0.15 to 0.50 MHz.

6.2 Test Setup



6.3 Test Procedure

The EUT is put on the plane 0.8m high above the ground by insulating support and is connected to the power mains through a line impedance stabilization network (L.I.S.N.). This provides a 50ohm coupling impedance for the EUT system. Please refer the block diagram of the test setup and photographs. Both sides of AC lines are checked to find out the maximum conducted emission. In order to find the maximum emission levels, the relative positions of equipment and all of the interface cables shall be changed according to ANSI C63.10-2013 on Conducted Emission Measurement. The bandwidth of test receiver (R & S ESCS30) is set at 9 kHz.

6.4 Test Results

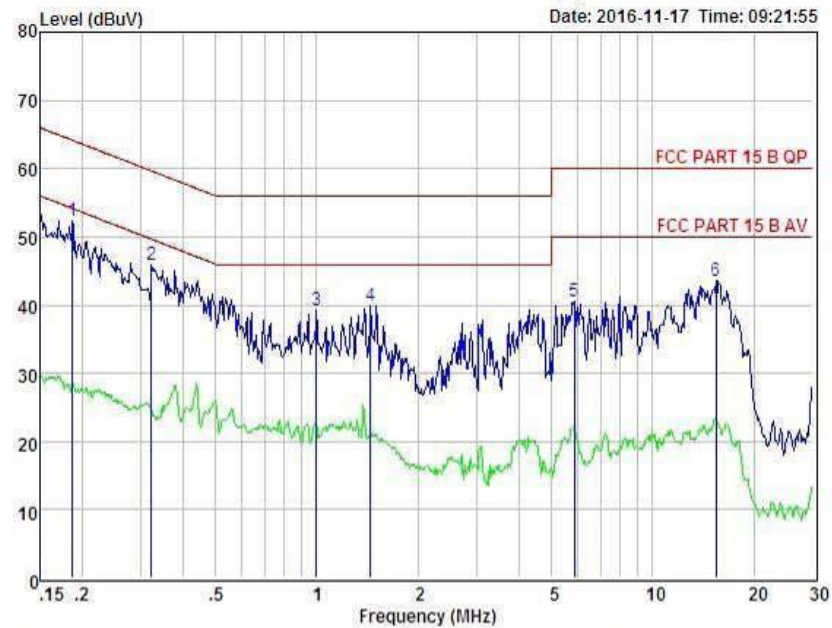
TX MODE

All modes have been tested, and only worse case mode is reported only.

PASS

Detailed information please see the following page.

Data: 5 File: E:\TEST REPORT\JJ\JUSTLISTEN\WSMT.EM6 (8)



Condition : FCC PART 15 B QP POL: LINE Temp: 24°C Hum: 56%

EUT : Mini Transmitter

Model No : WSMT

Test Mode :

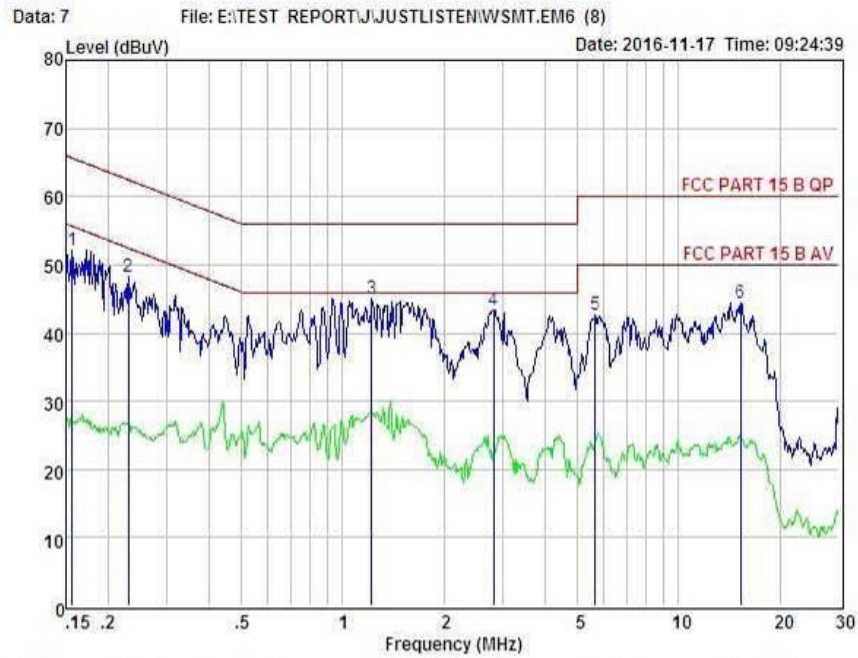
Power :

Test Engineer :

Remark :

Item	Freq MHz	Read Level dBuV	LISN Factor dB	Preamp Factor dB	Cable Loss dB	Level dBuV	Limit dBuV	Margin dBuV	Remark
1	0.187	42.77	0.03	-9.52	0.10	52.42	64.15	-11.73	Peak
2	0.322	36.24	0.03	-9.56	0.10	45.93	59.66	-13.73	Peak
3	1.000	29.53	0.04	-9.63	0.10	39.30	56.00	-16.70	Peak
4	1.449	30.02	0.05	-9.66	0.10	39.83	56.00	-16.17	Peak
5	5.836	30.37	0.11	-9.96	0.14	40.58	60.00	-19.42	Peak
6	15.470	33.24	0.24	-9.84	0.25	43.57	60.00	-16.43	Peak

Remark: Level = Read Level + LISN Factor - Preamp Factor + Cable Loss



Condition : FCC PART 15 B QP POL: NEUTRAL Temp: 24°C Hum: 56%

EUT : Mini Transmitter

Model No : WSMT

Test Mode :

Power :

Test Engineer :

Remark :

Item	Freq MHz	Read Level dBuV	LISN Factor dB	Preamp Factor dB	Cable Loss dB	Level dBuV	Limit dBuV	Margin dBuV	Remark
1	0.156	42.56	0.03	-9.52	0.10	52.21	65.65	-13.44	Peak
2	0.230	38.63	0.03	-9.52	0.10	48.28	62.44	-14.16	Peak
3	1.223	35.24	0.04	-9.65	0.10	45.03	56.00	-10.97	Peak
4	2.809	33.44	0.07	-9.78	0.12	43.41	56.00	-12.59	Peak
5	5.653	32.39	0.10	-9.96	0.13	42.58	60.00	-17.42	Peak
6	15.307	34.05	0.24	-9.84	0.24	44.37	60.00	-15.63	Peak

Remark: Level = Read Level + LISN Factor - Preamp Factor + Cable Loss

7 Bandwidth

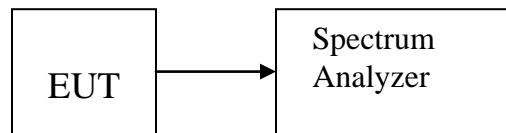
7.1 Test limit

Please refer section 15.215

7.2 Method of measurement

- a) The bandwidth is measured at an amplitude level reduced 20dB from the reference level. The reference level is the level of the highest amplitude signal observed from the transmitter at the fundamental frequency. Once the reference level is established, the equipment is conditioned with typical modulating signal to produce the worst-case (i.e. the widest) bandwidth.
- b) The test receiver RBW set 100KHz, VBW set 300KHz, Sweep time set auto.
- c) Peak detector is used

7.3 Test Setup



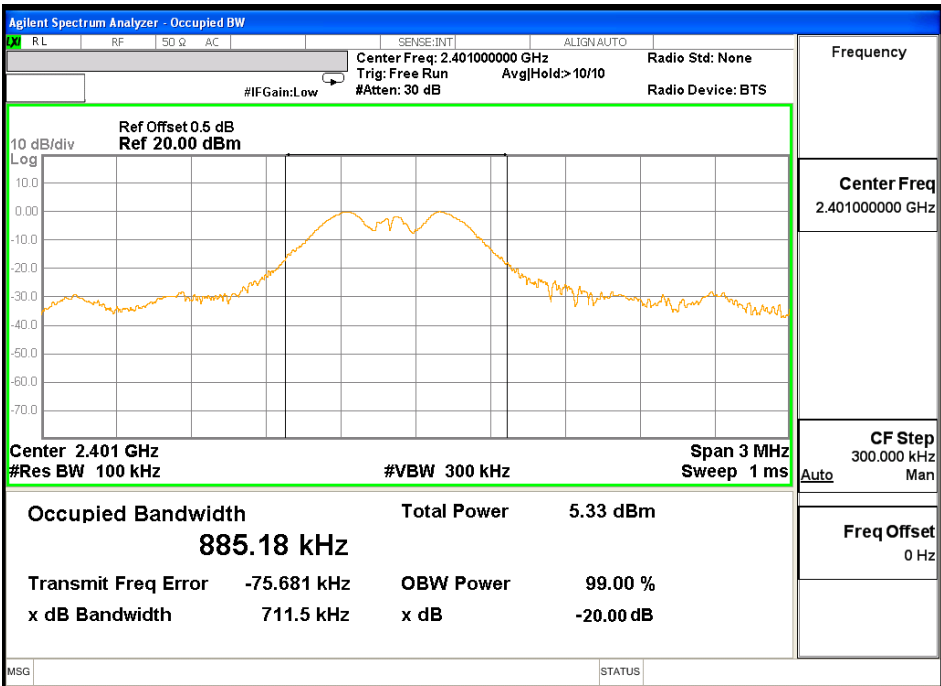
7.4 Test Results

PASS.

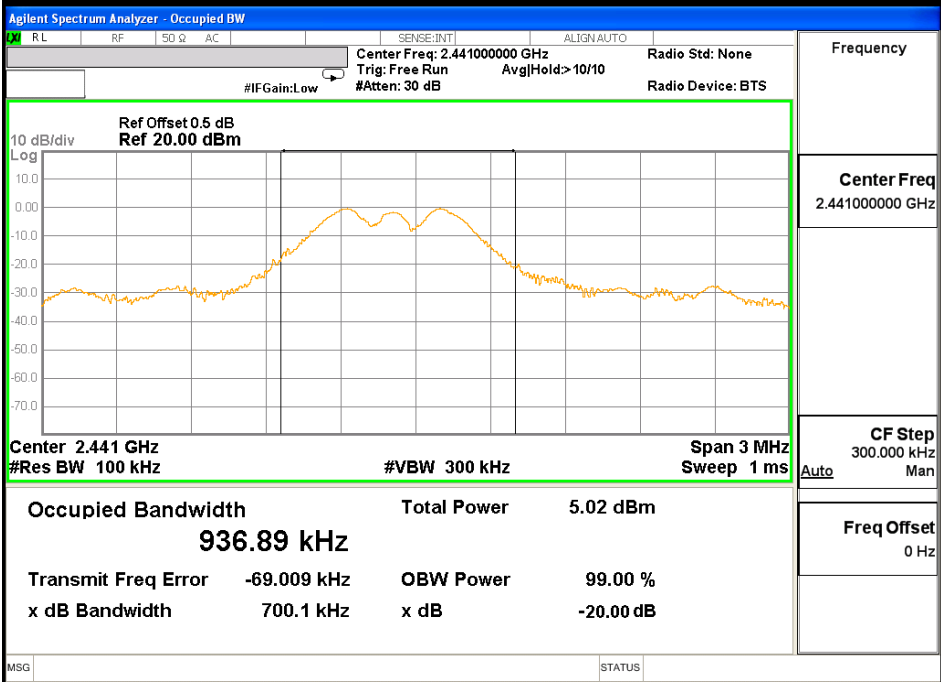
Detailed information please see the following page.

Channel	Frequency (MHz)	20dB Bandwidth (KHz)	Limit (KHz)	Result
CH1	2401	711.5	/	PASS
CH41	2441	700.1	/	PASS
CH83	2483	697.4	/	PASS

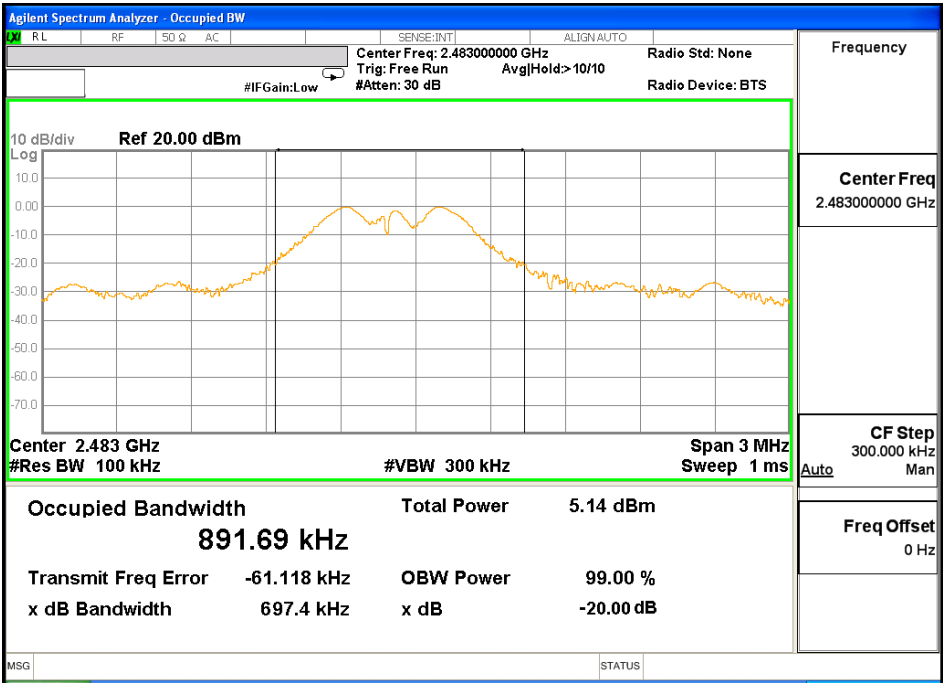
CH Low :



CH Mid :



CH High :



8 Antenna Requirement

8.1 Standard Requirement

An intentional radiator shall be designed to ensure that no antenna other than that furnished by the responsible party shall be used with the device. The use of a permanently attached antenna or of an antenna that uses a unique coupling to the intentional radiator shall be considered sufficient to comply with the provisions of this Section. The manufacturer may design the unit so that a broken antenna can be replaced by the user, but the use of a standard antenna jack or electrical connector is prohibited.

8.2 Antenna Connected Construction

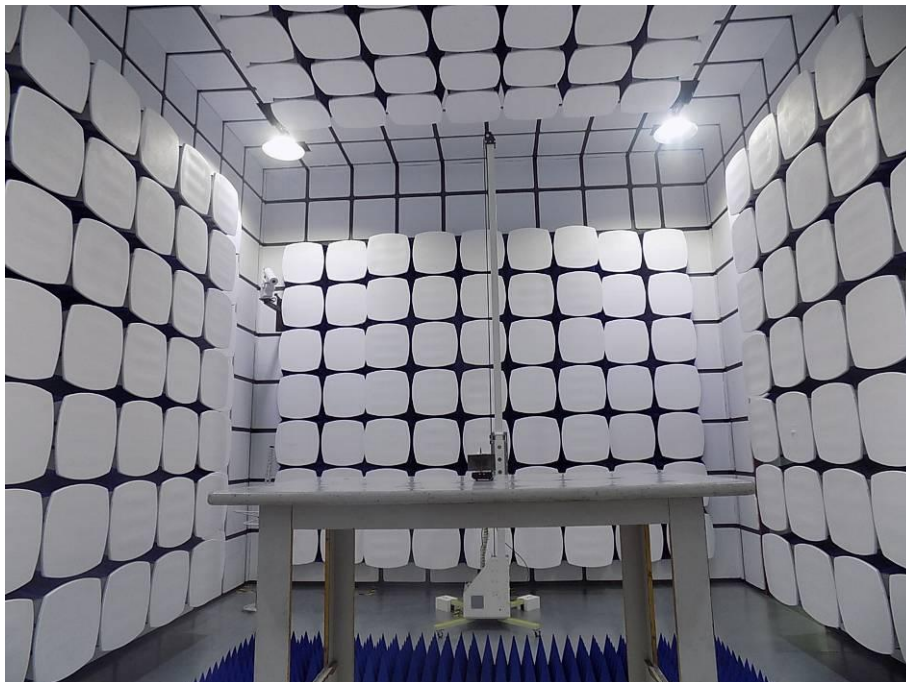
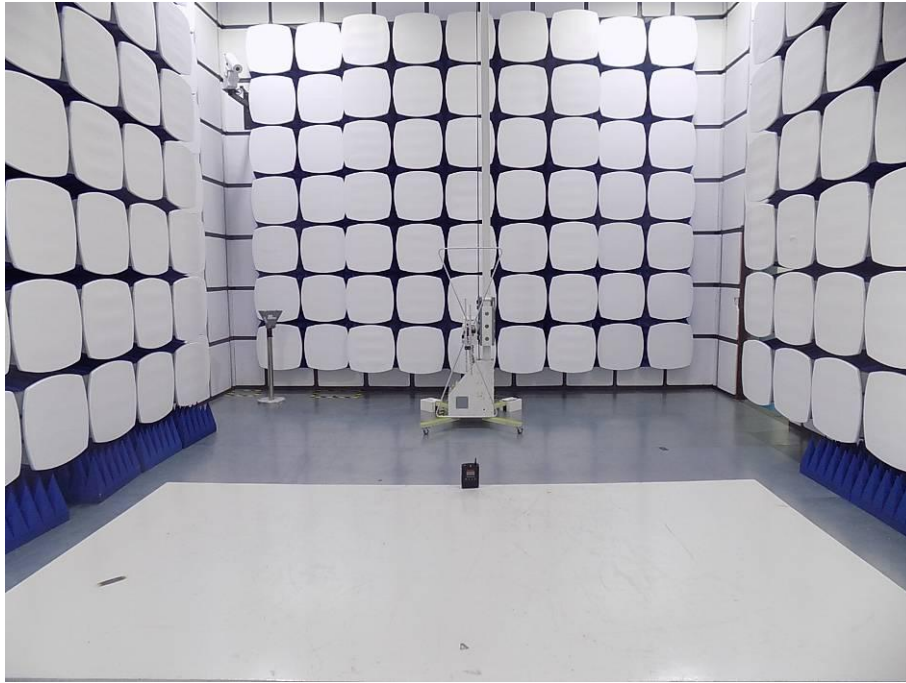
The directional gains of antenna used for transmitting is 0dBi, and is a integer Antenna and no consideration of replacement. Please see EUT photo for details.

8.3 Result

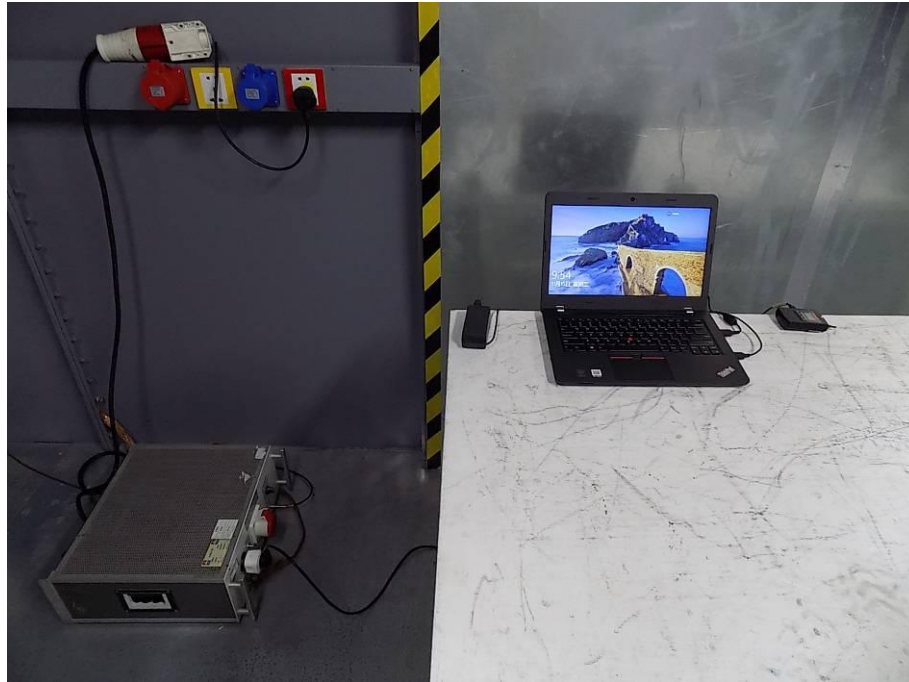
The EUT antenna is PCB Antenna. It comply with the standard requirement.

9 Photographs of Test Setup

9.1 Photos of Radiated emission



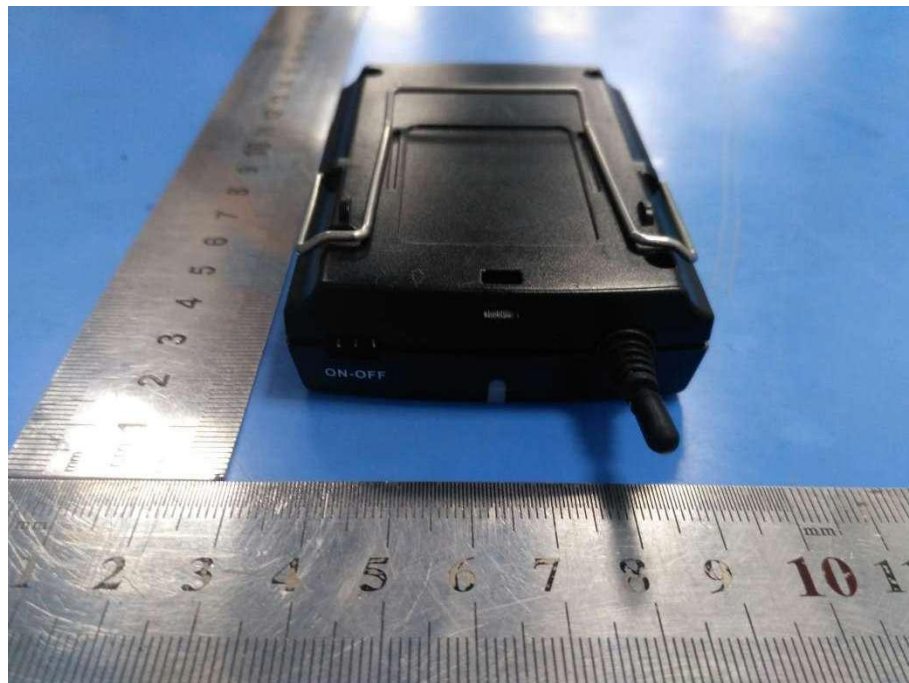
9.2 Photos of Power Line Conducted Emission

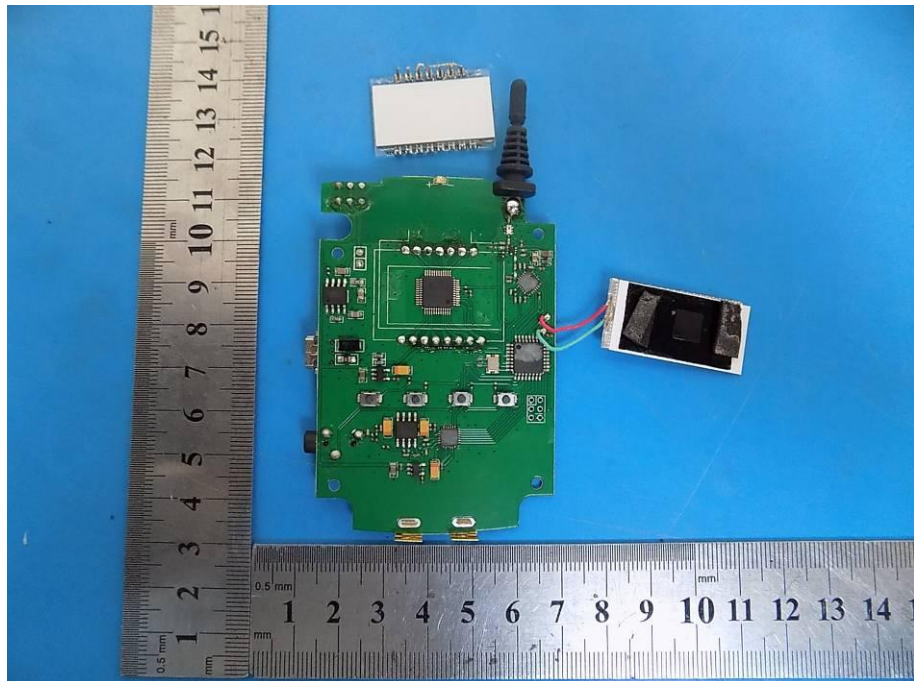
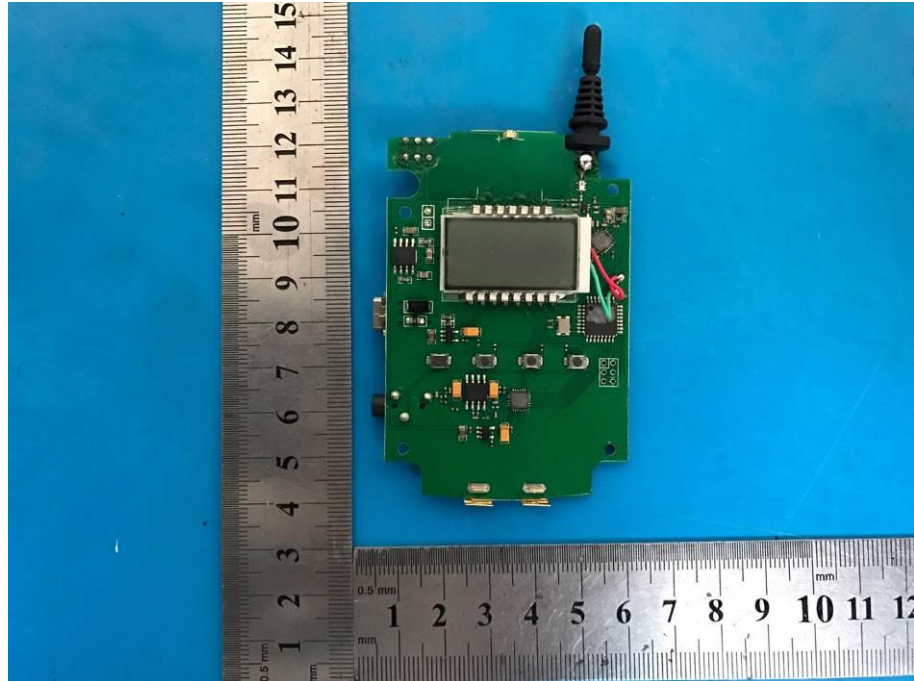


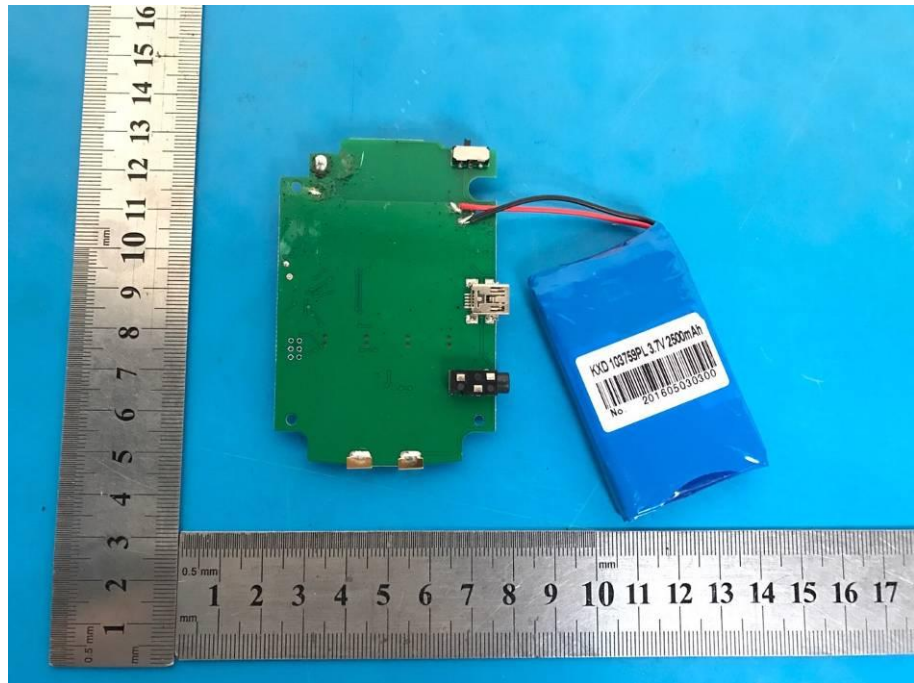
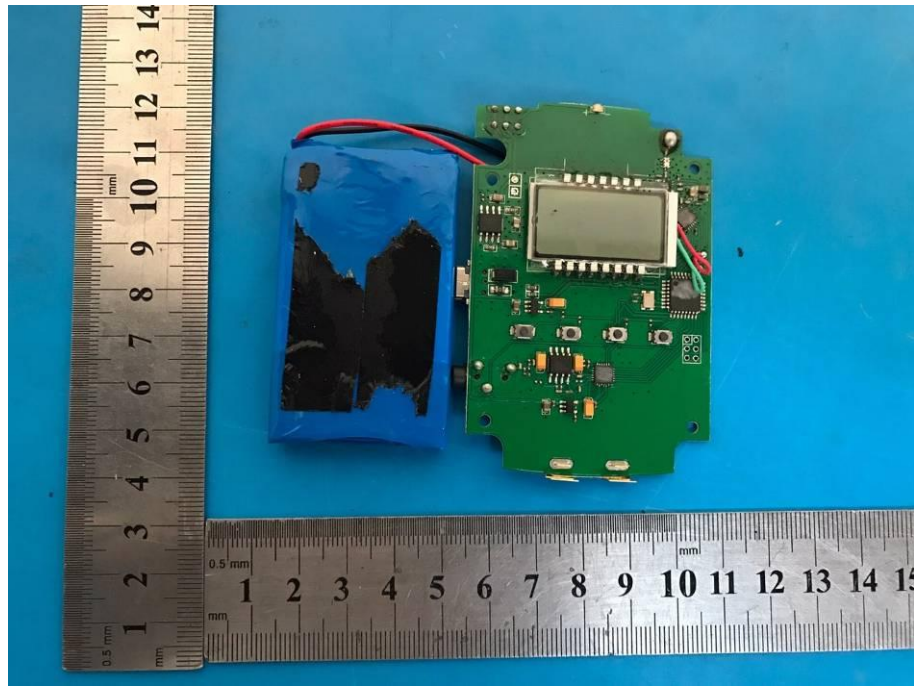
10 Photographs of EUT











----- END OF REPORT-----