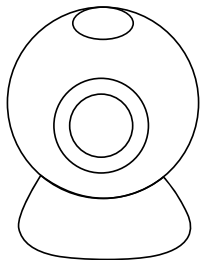


SMART HOME CAMERA

Operation Guide



Quick Guide for Yoosee

Step 1. Camera Interface



1: SD card 2: Power 3: Network

Step 2.Download and Install Yoosee APP

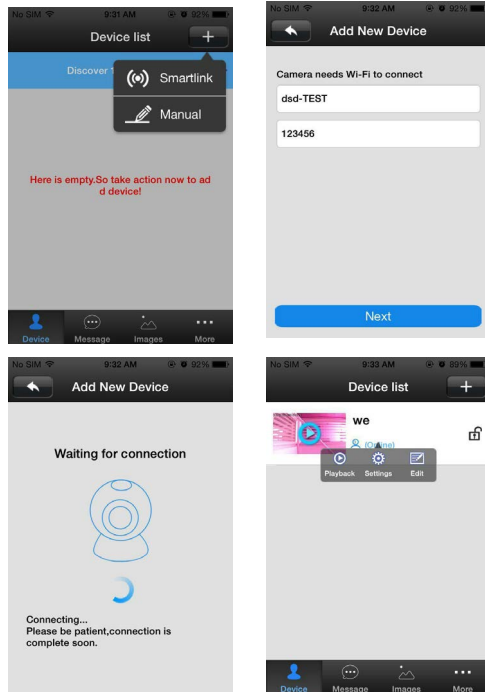
Go to the Apple APP Store or Android Google Play search Yoosee, or visit www.yoosee.co to download Yoosee APP. When you finish installation, please log-in.

Step 3.Add Camera on Yoosee

By WIFI

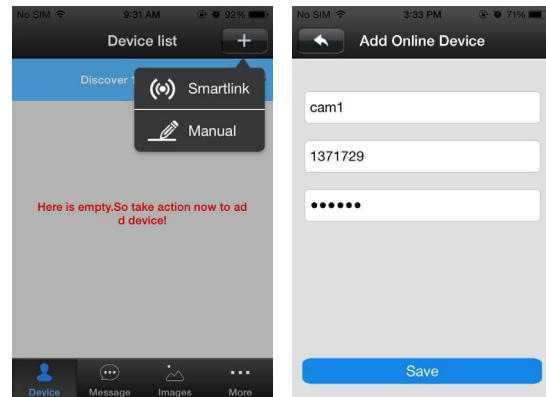
Connect your phone to WIFI first, and make sure it's 2.4G WIFI, since camera doesn't support 5G. On the Device

List interface, please click the "+" button and choose "Smartlink", type the wifi name and password, when it's connected, create a new password for the camera.



By Wired Network

Connect camera with network by cable. On the Device List interface, click "+" button and choose "Manual", write the Device Name & Device ID & Device Password, and save it.



Step 4.Access Camera on Yoosee

- ① Real-time video. Click the Play button on the camera image, you can view the real-time video, and slide the screen to control camera rotation.
- ② Playback video. Click the blank on the camera list, choose Playback.
- ③ Setting. Click the blank on the camera list, choose Setting.

Step 5. Use with Wireless Sensor

Some cameras can use with wireless sensor(magnet sensor,smoke detector,Infrared sensor) in the same frequent(433MHz or 315MHz), making a wireless alarm system. For example,place a magnet sensor in the hall as channel 1:Click the blank on the camera list,choose Setting>Area>Hall>Channel 1,it will show Success.In alarm setting,” receive alarm message” .Once the magnet sensor was triggered,camera will send alert messages to your phone.

Step 6. FAQ

- ① Q:When add the camera,no device can be found.

A:Make your phone and camera are in the same LAN;
Check whether your network lamp keeps on or not;
If your camera and phone are not in the same LAN,please add your camera by manual.
- ② Q:When view the real-time video,it said password error.

A:Check your remote access password,you can re-set your password in Edit item;
If you forget password,please press “Reset” button to restore factory defaults(The default is empty,when you add your camera, you need to enter a new password,or else you can’t do remote access).
- ③ Q: Device offline

A:Check whether your camera connects with the Internet well or not, and the network lamp keeps on; make sure your router is working.

- ④ Q: Video file can’t find when playback.

A: Check your SD card;
Check retrieval time of the video file and system time of your camera.
- ⑤ Q: Camera can’t connect with WIFI.

A: Check the WIFI password
Check it’s 2.4G WIFI,camera can’t support 5G.

Step 7.obtain more information

More information, technical support from the factory will help.



Android



ios

FCC Statement

This equipment has been tested and found to comply with the limits for a Class B digital device, pursuant to Part 15 of the FCC Rules. These limits are designed to provide reasonable protection against harmful interference in a residential installation. This equipment generates uses and can radiate radio frequency energy and, if not installed and used in accordance with the instructions, may cause harmful interference to radio communications. However, there is no guarantee that interference will not occur in a particular installation. If this equipment does cause harmful interference to radio or television reception, which can be determined by turning the equipment off and on, the user is encouraged to try to correct the interference by one or more of the following measures:

- Reorient or relocate the receiving antenna.
- Increase the separation between the equipment and receiver.
- Connect the equipment into an outlet on a circuit different from that to which the receiver is connected.
- Consult the dealer or an experienced radio/TV technician for help.

This device complies with part 15 of the FCC Rules. Operation is subject to the following two conditions:

(1) This device may not cause harmful interference, and (2) this device must accept any interference received, including

interference that may cause undesired operation.

Changes or modifications not expressly approved by the party responsible for compliance could void the user's authority to operate the equipment.

The antenna(s) used for this transmitter must be installed to provide a separation distance of at least 20 cm from all persons and must not be co-located or operating in conjunction with any other antenna or transmitter.