

<b>Department: Engineering</b>	<b>Page No.: 0</b>
	<b>DOC No./Version: N/A</b>
	<b>Effective Date: N/A</b>

## **SPEAC™ Detection Device**

### **Internal Photographs**

<b>Authored By:</b>  N/A	<b>Signature:</b>	<b>Date:</b>
<b>Reviewed By:</b>  N/A	<b>Signature:</b>	<b>Date:</b>
<b>Reviewed By:</b>  N/A	<b>Signature:</b>	<b>Date:</b>
<b>Approved By:</b>  N/A	<b>Signature:</b>	<b>Date:</b>

<b>Revision History</b>			
<b>Version No.</b>	<b>Effective Date</b>	<b>Author</b>	<b>Description</b>
<b>0.1</b>		<b>James Fox</b>	<b>Initial Release</b>

Department: Engineering	Page No.: 1
	DOC No./Version: N/A
	Effective Date: N/A

### 1 DD Interior Front and Rear

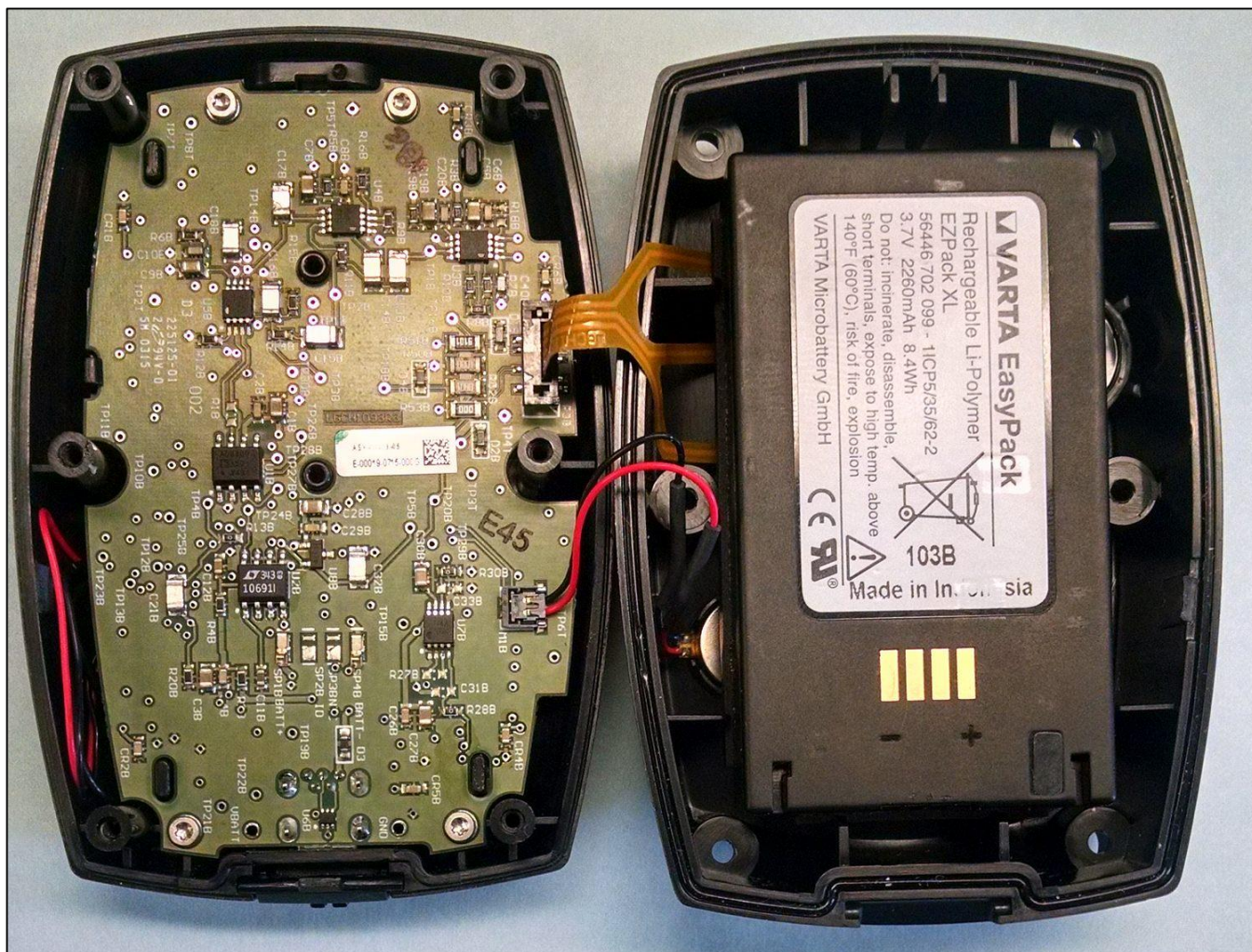


Figure 1

Department: Engineering	Page No.: 2
	DOC No./Version: N/A
	Effective Date: N/A

## 2 DD Subassemblies

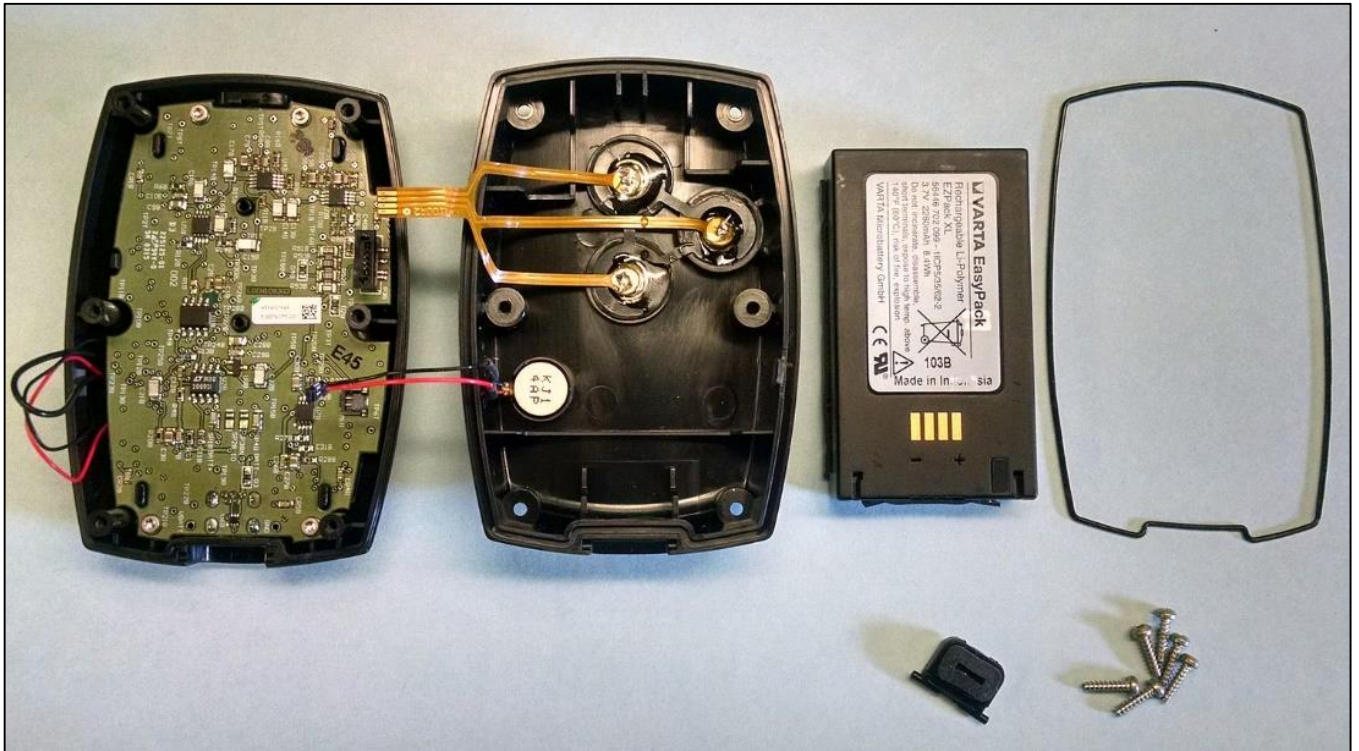
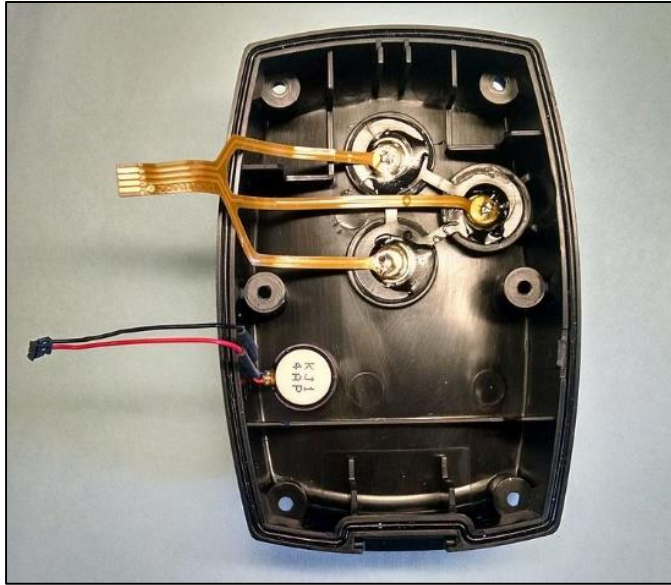


Figure 2



Department: Engineering	Page No.: 3
	DOC No./Version: N/A
	Effective Date: N/A

### 3 Rear Case Assembly



**Figure 3**

Department: Engineering	Page No.: 4
	DOC No./Version: N/A
	Effective Date: N/A

### 4 Front Case Subassemblies

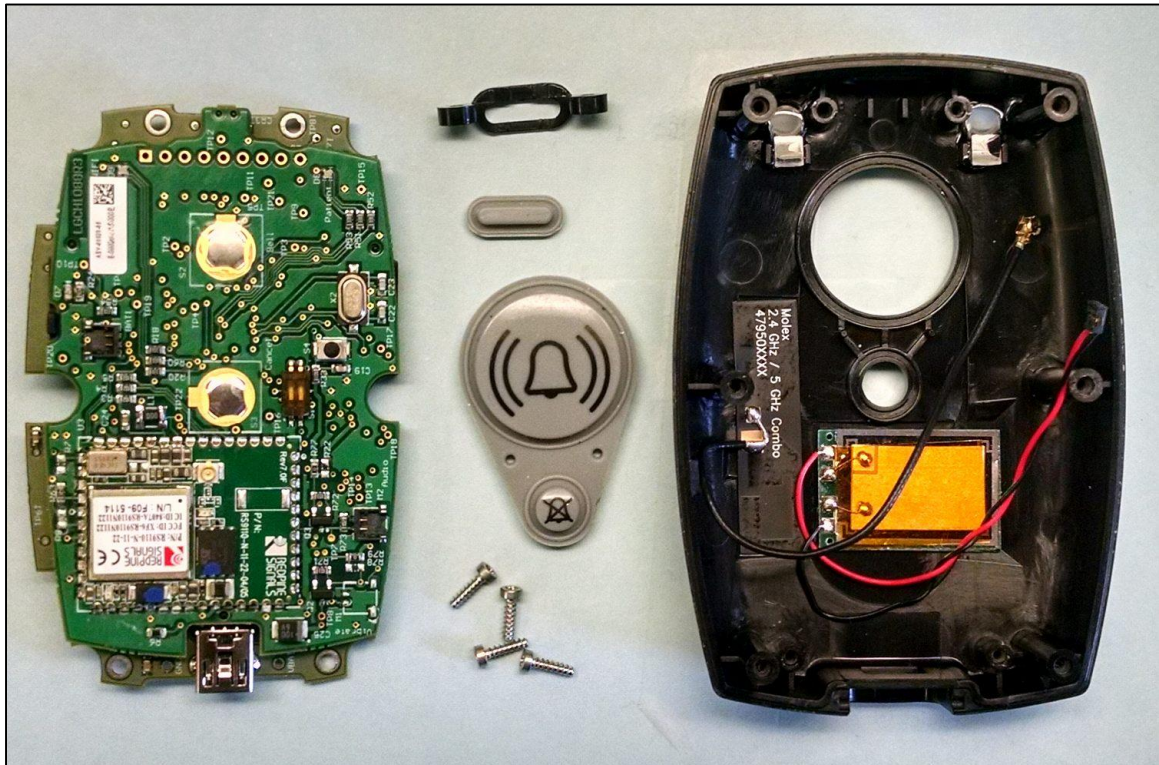


Figure 4

Department: Engineering	Page No.: 5
	DOC No./Version: N/A
	Effective Date: N/A

### 5 Board Stack Assembly

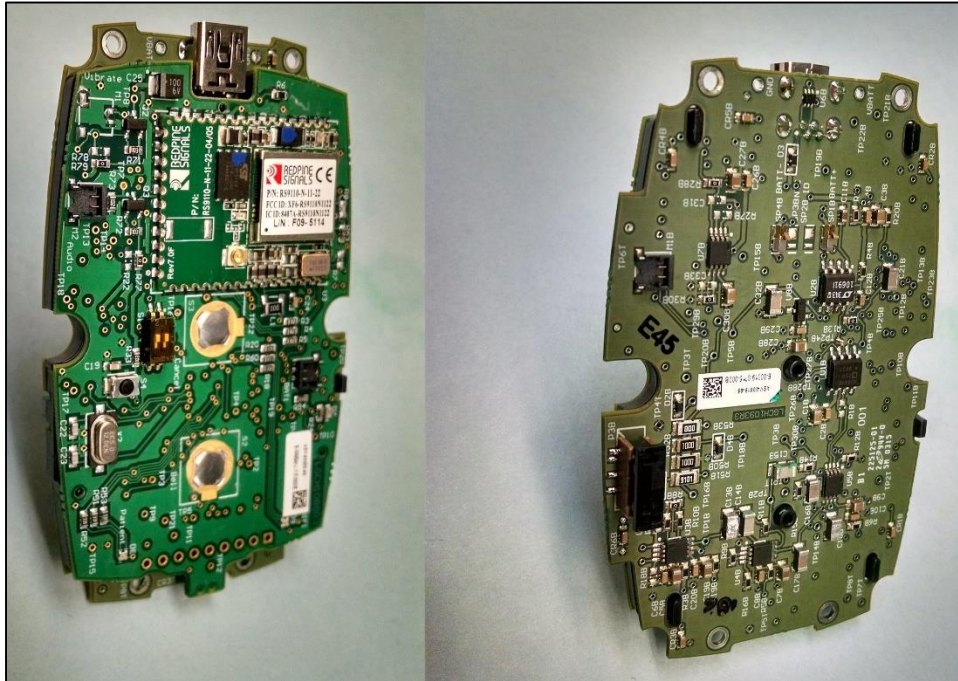


Figure 5

Department: Engineering	Page No.: 6
	DOC No./Version: N/A
	Effective Date: N/A

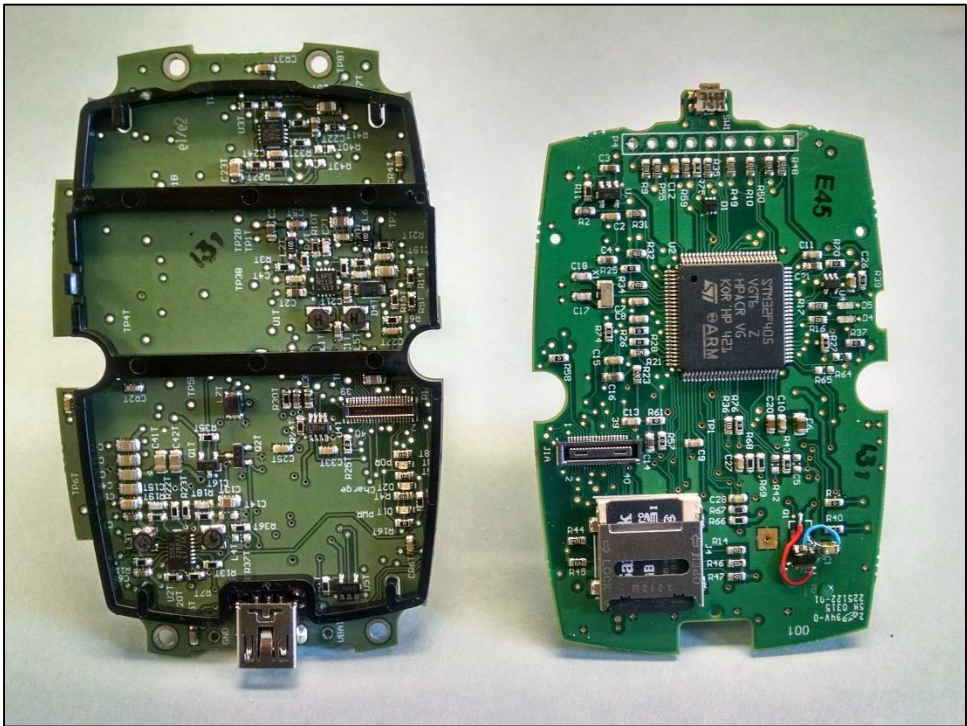


Figure 6



Department: Engineering	Page No.: 7
	DOC No./Version: N/A
	Effective Date: N/A

### 6 EMG PCB Assembly

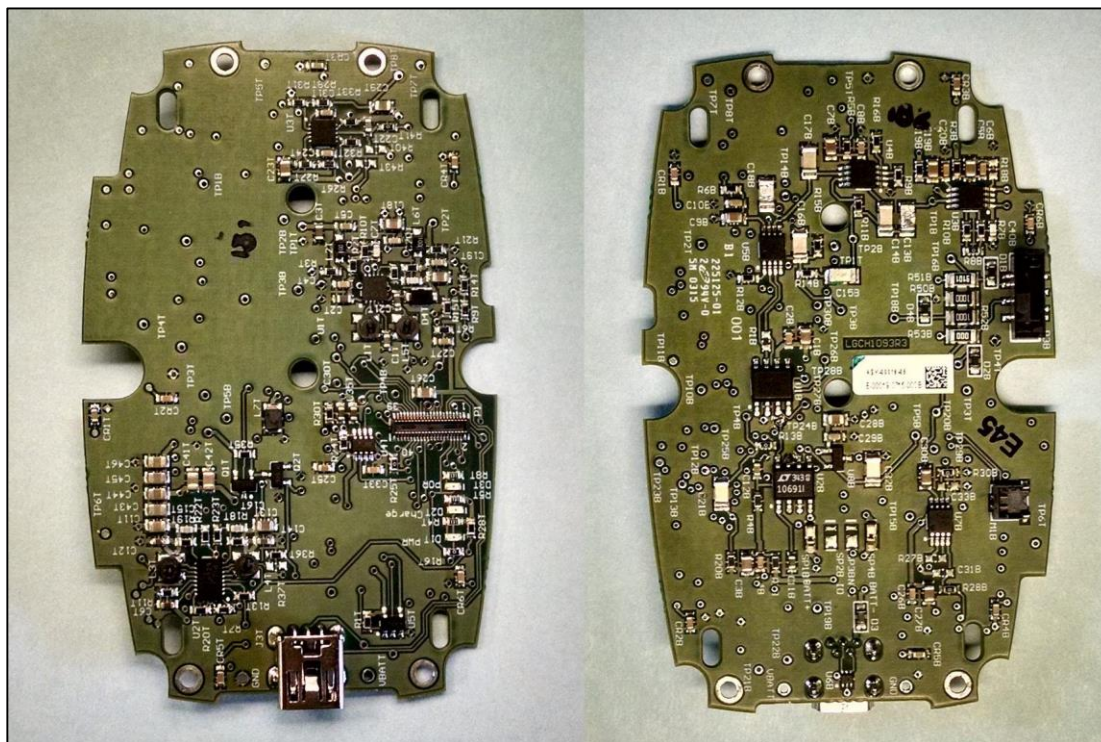


Figure 7



Department: Engineering	Page No.: 8
	DOC No./Version: N/A
	Effective Date: N/A

### 7 MCU PCB Assembly

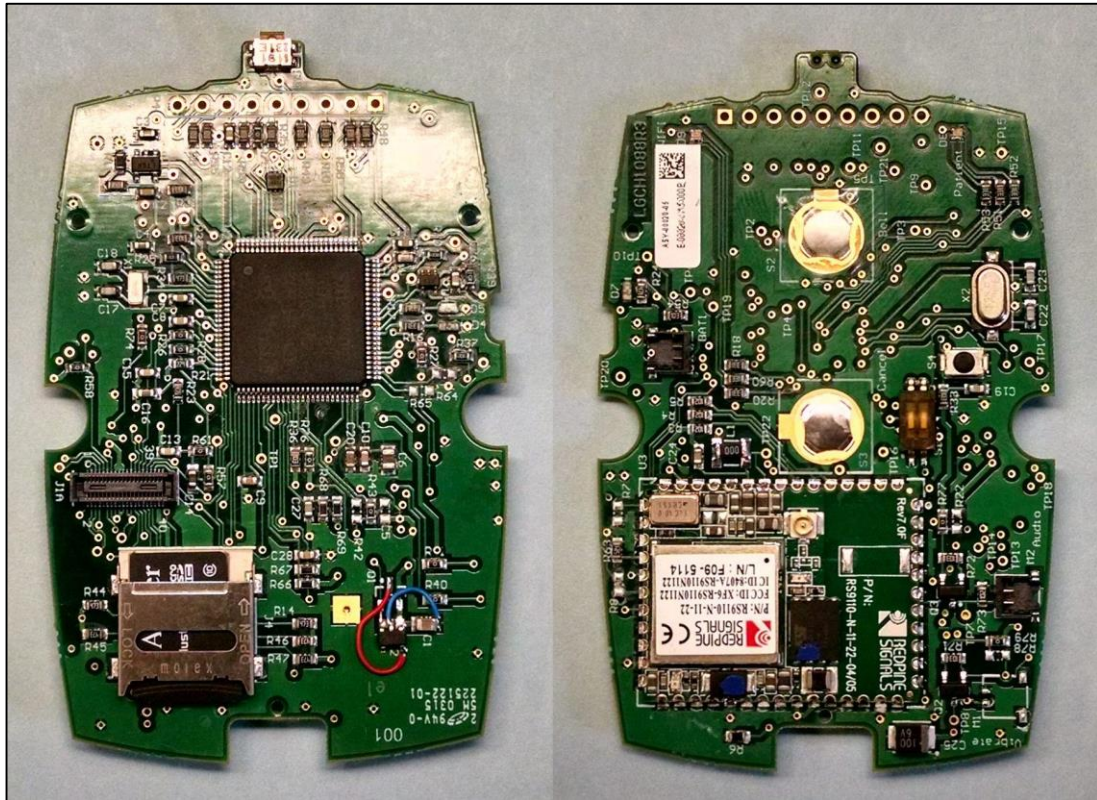


Figure 8

Department: Engineering	Page No.: 9
	DOC No./Version: N/A
	Effective Date: N/A

### 8 Battery Assembly



Figure 9

Department: Engineering	Page No.: 10
	DOC No./Version: N/A
	Effective Date: N/A

## 9 Redpine Module Modifications

### 9.1 RS9110-N-11-22-05 Modifications

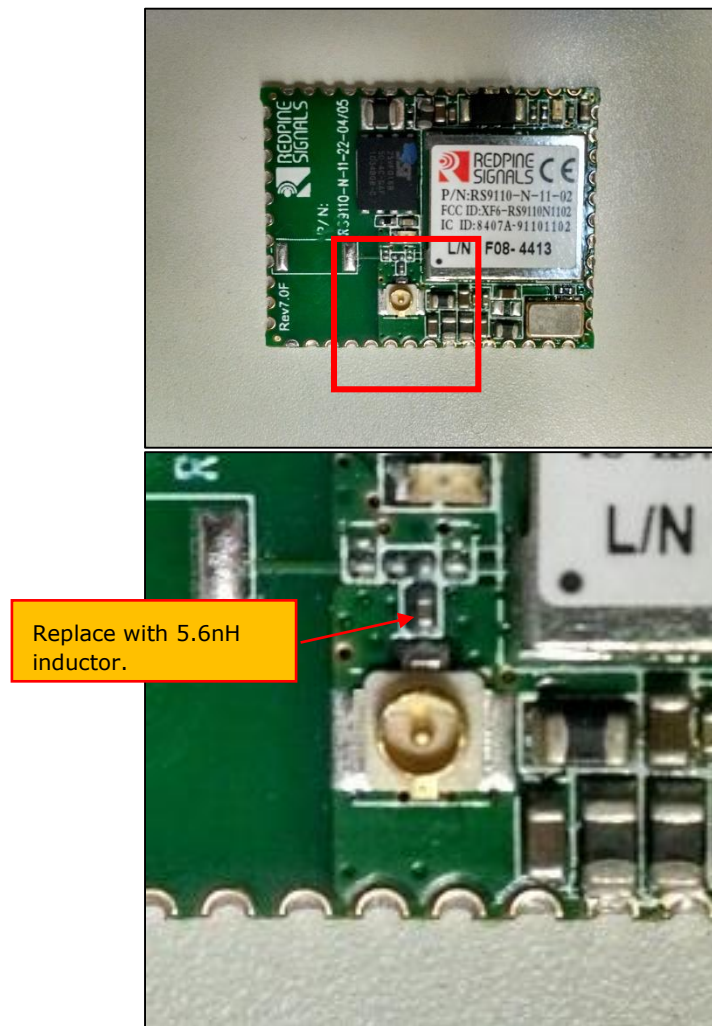


Figure 10

#### 9.1.1 Instructions

- Remove component at location shown in **Error! Reference source not found..**
- Add 5.6nH inductor (Johanson Technology PN = L-05B5N6SV6) at location shown in **Error! Reference source not found..Error! Reference source not found.**