

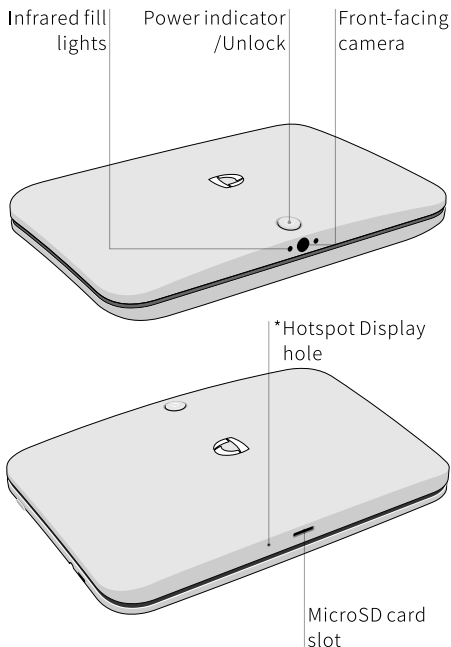


Quick Start Guide

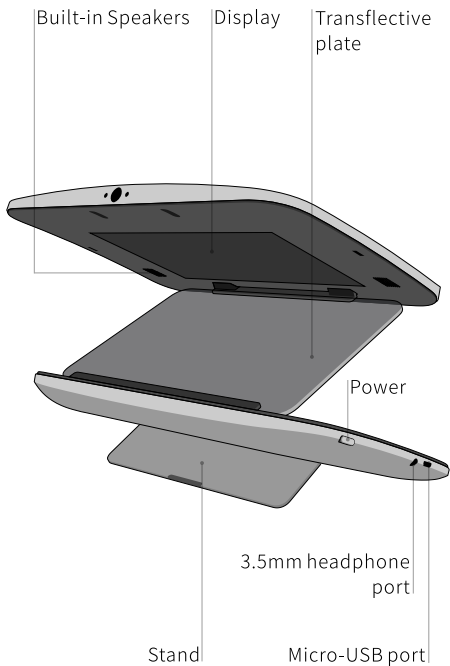
Welcome to 3DBOX

This guide shows you what's on your 3DBOX (or Box), helps you set it up and learns to use it quickly.

External Buttons and Connectors



*Short press to display Box's hotspot SSID and Password, long press to reset the Password using a paperclip.

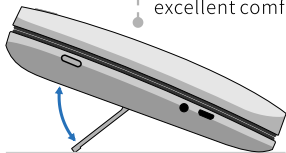


Start up your 3DBOX



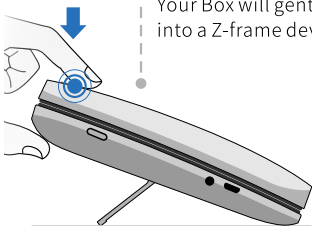
1 Open the Stand

Finely adjust the stand for excellent comfort.



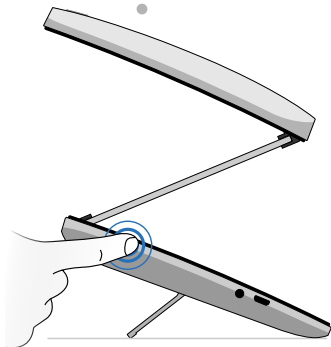
2 Press the Unfold button

Your Box will gently unfold into a Z-frame device.



3 Press the Power button

Long press 3s to start up your Box.



4 First start up screen

Your Box's hotspot SSID and Password will display on the bottom of the screen.

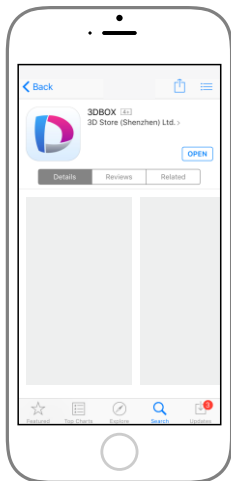


Start up your 3DBOX 5

3DBOX app

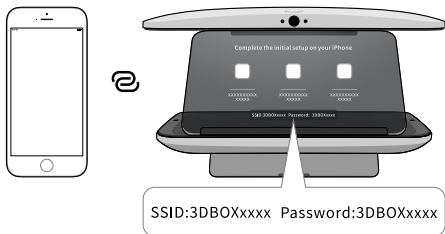
1 Download and install the 3DBOX app

Scan QR code to download from the App Store.

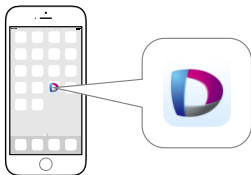


2 Pair iPhone and 3DBOX

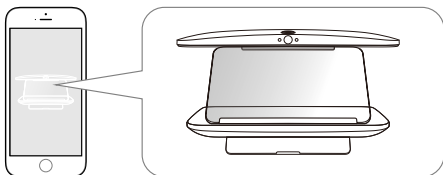
- Open iPhone 'Settings' > 'Wi-Fi'
- Select the network display on Box's screen
- Enter the Password display on Box's screen, and complete the pair



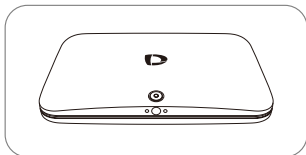
- Open the 3DBOX app



- An unfolded device indicates a successful connection between the app and your 3DBOX.
- The app will now control your 3DBOX




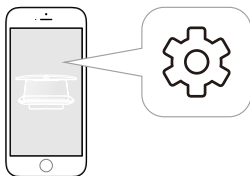
An unfolded device indicates a successful connection




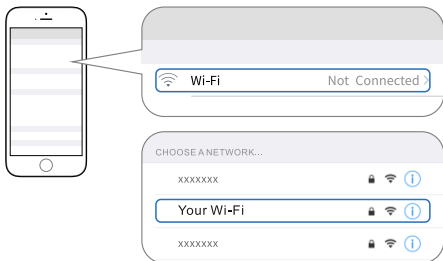
A folded device indicates a disconnection

3 Connect your 3DBOX to the Internet

- Open the 3DBOX app 'Settings' > 'Wi-Fi' 



- Select your Wi-Fi from the list of available networks 
- Enter your Wi-Fi password, and complete the connection.
- A checkmark next to your Wi-Fi indicates a successful connection.
- Now Both your 3DBOX and iPhone are connected to the Internet using your Wi-Fi network.



Note

1. Please read this manual thoroughly and follow its instructions before using Box.
2. Please fold Box when not in use.
3. Charge Box with the included USB cable and power adapter.
4. Unplugged from a power source when Box not in use because it may cause injury or damage to Box or other property.
5. Make sure the device is operating in a temperature range of 0 °C to 35 °C; otherwise may lead to an abnormal condition.
6. Don't attempt to service or disassemble Box yourself. If any question, please contact Tronxyz Support by email at support@tronxyz.com or call +86-4000-128-666.
7. Avoid storing in heat or moisture areas, avoid prolonged exposure to the sun.
8. Avoid shaking, knocking, and crashing Box violently.
9. Avoid throwing Box into a fire; otherwise may cause fire disaster or explosion.

FCC Notice

This device complies with part 15 of the FCC Rules. Operation is subject to the following two conditions: (1) This device may not cause harmful interference, and (2) this device must accept any interference received, including interference that may cause undesired operation.

Any Changes or modifications not expressly approved by the party responsible for compliance could void the user's authority to operate the equipment.

§ 15.105 Information to the user.

Note: This equipment has been tested and found to comply with the limits for a Class B digital device, pursuant to part 15 of the FCC Rules. These limits are designed to provide reasonable protection against harmful interference in a residential installation. This equipment generates uses and can radiate radio frequency energy and, if not installed and used in accordance with the instructions, may cause harmful interference to radio communications. However, there is no guarantee that interference will not occur in a particular installation. If this equipment does cause harmful interference to radio or television reception, which can be determined by turning the equipment off and on, the user is encouraged to try to correct the interference by one or more of the following measures:

- Reorient or relocate the receiving antenna.
- Increase the separation between the equipment and receiver.
- Connect the equipment into an outlet on a circuit different from that to which the receiver is connected.
- Consult the dealer or an experienced radio/TV technician for help.

Everything is ready

Now begin to explore the wonderful world of Box!

Visit box.superd3d.com for more information