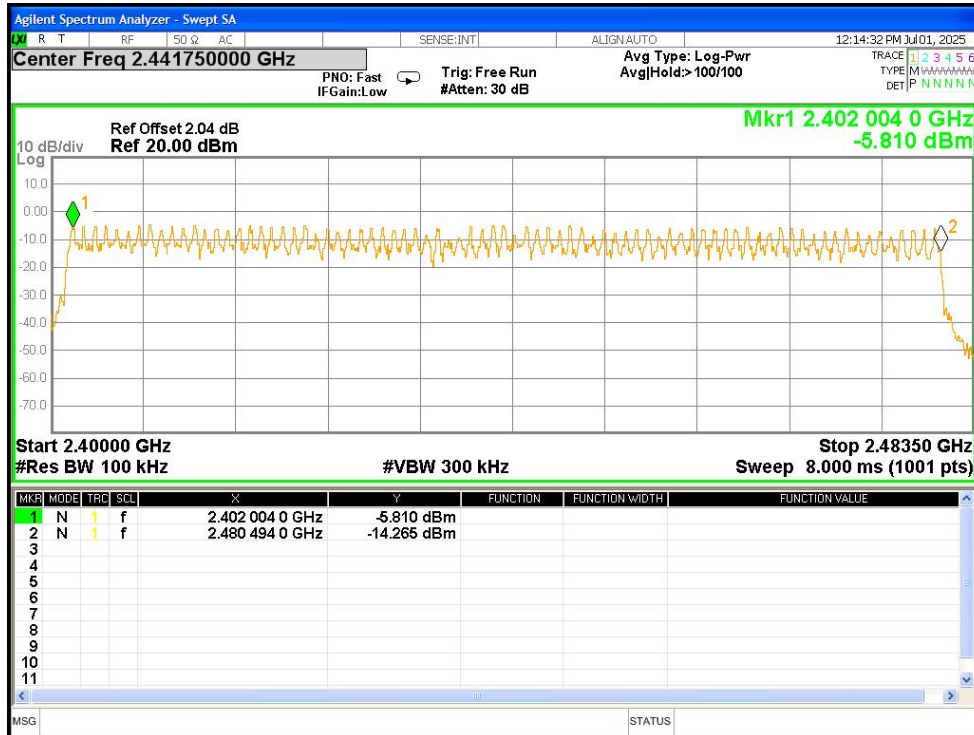


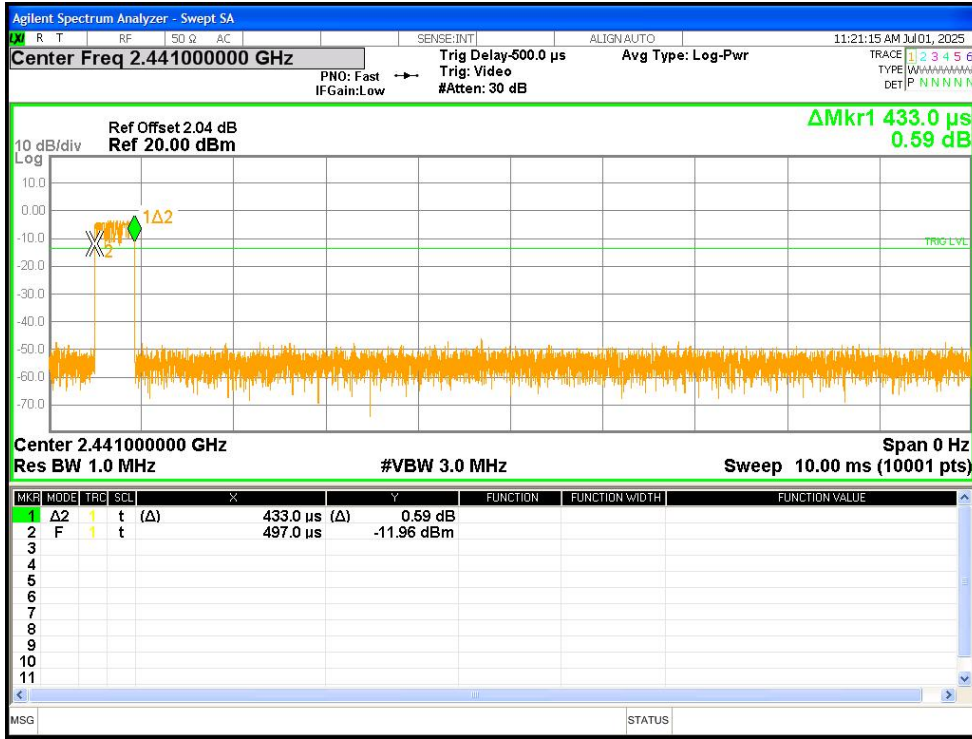
Hopping No. NVNT 3-DH1 2441MHz Ant1



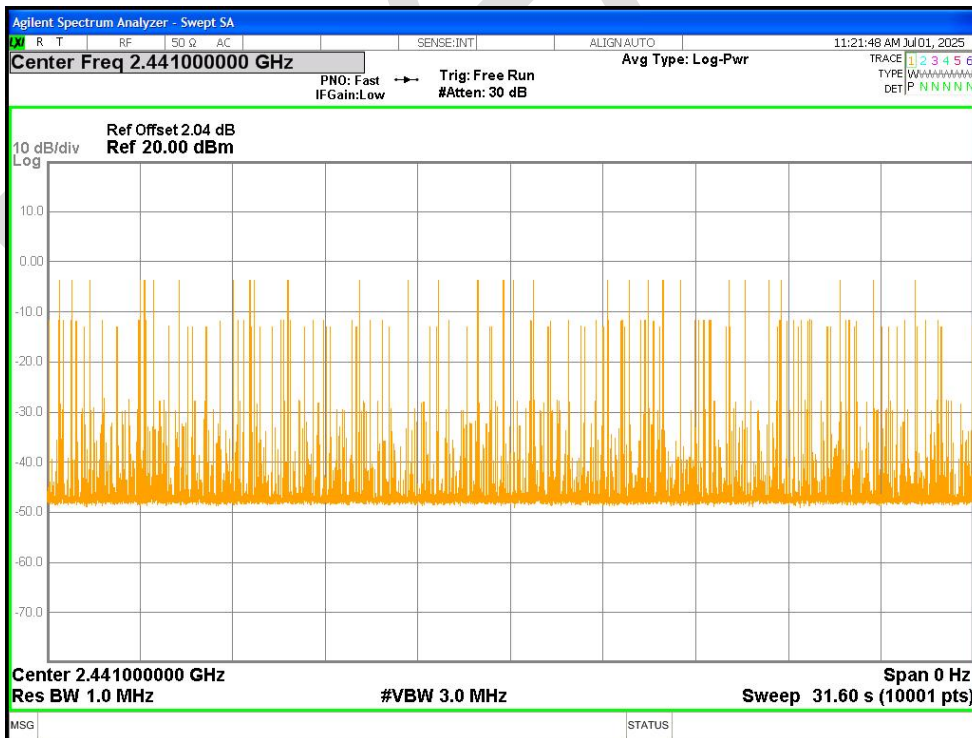
7.9 Dwell Time

Condition	Mode	Frequency (MHz)	Antenna	Pulse Time (ms)	Total Dwell Time (ms)	Burst Count	Period Time (ms)	Limit (ms)	Verdict
NVNT	1-DH1	2441	Ant1	0.433	12.99	30	31600	400	Pass
NVNT	1-DH3	2441	Ant1	1.633	66.953	41	31600	400	Pass
NVNT	1-DH5	2441	Ant1	2.83	121.69	43	31600	400	Pass
NVNT	2-DH1	2441	Ant1	0.491	23.568	48	31600	400	Pass
NVNT	2-DH5	2441	Ant1	2.89	86.7	30	31600	400	Pass
NVNT	3-DH1	2441	Ant1	0.417	21.267	51	31600	400	Pass
NVNT	3-DH5	2441	Ant1	2.765	116.13	42	31600	400	Pass

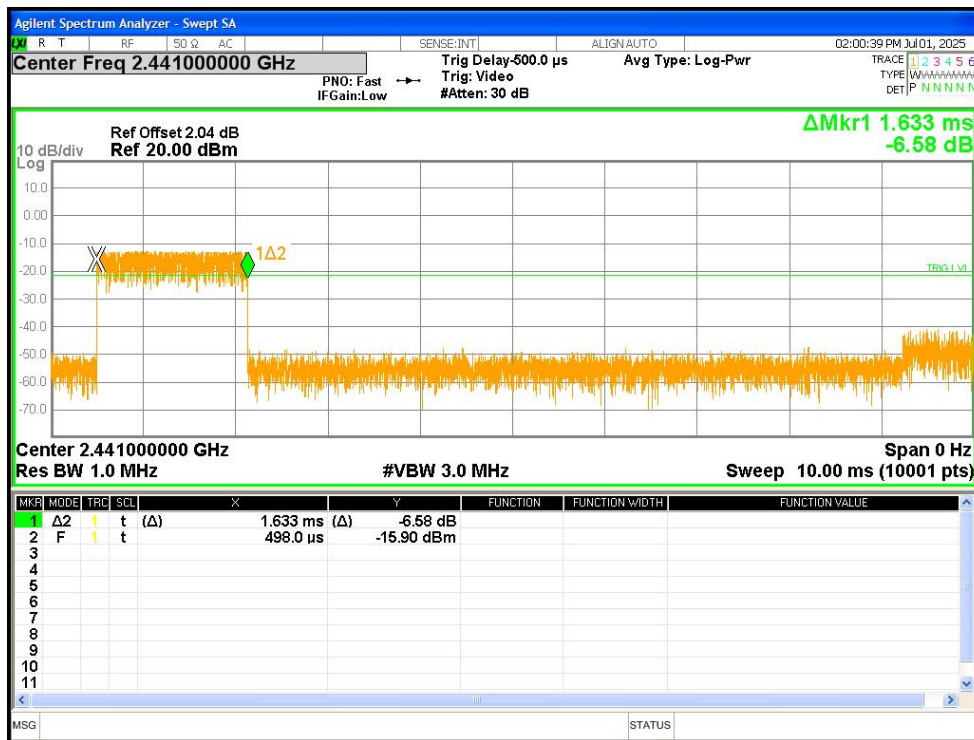
Dwell NVNT 1-DH1 2441MHz Ant1 One Burst



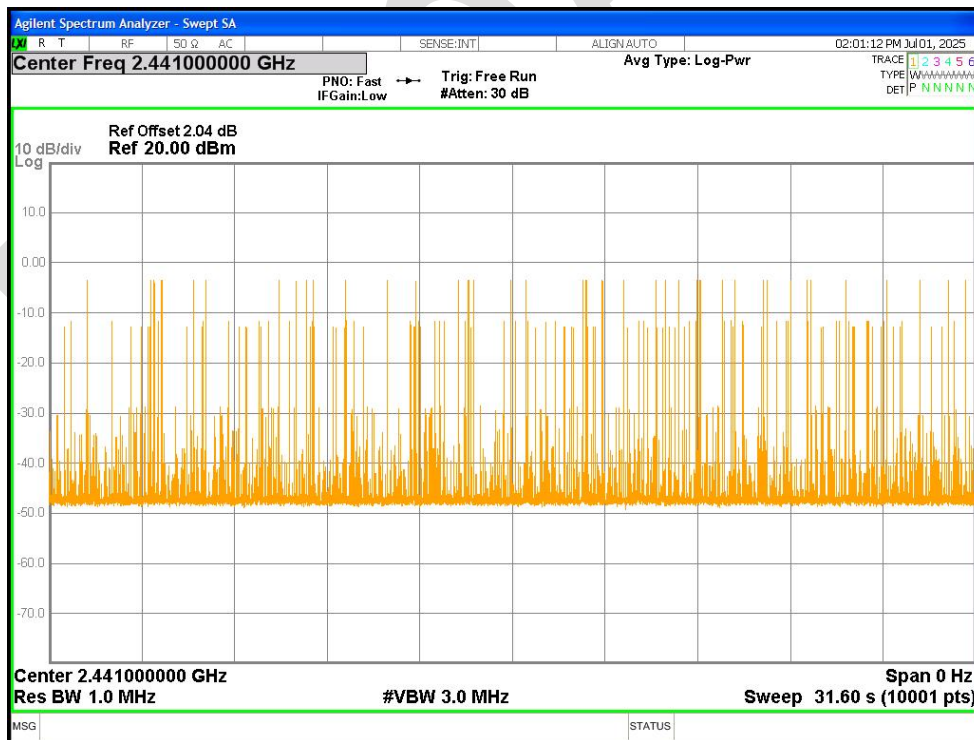
Dwell NVNT 1-DH1 2441MHz Ant1 Accumulated



Dwell NVNT 1-DH3 2441MHz Ant1 One Burst



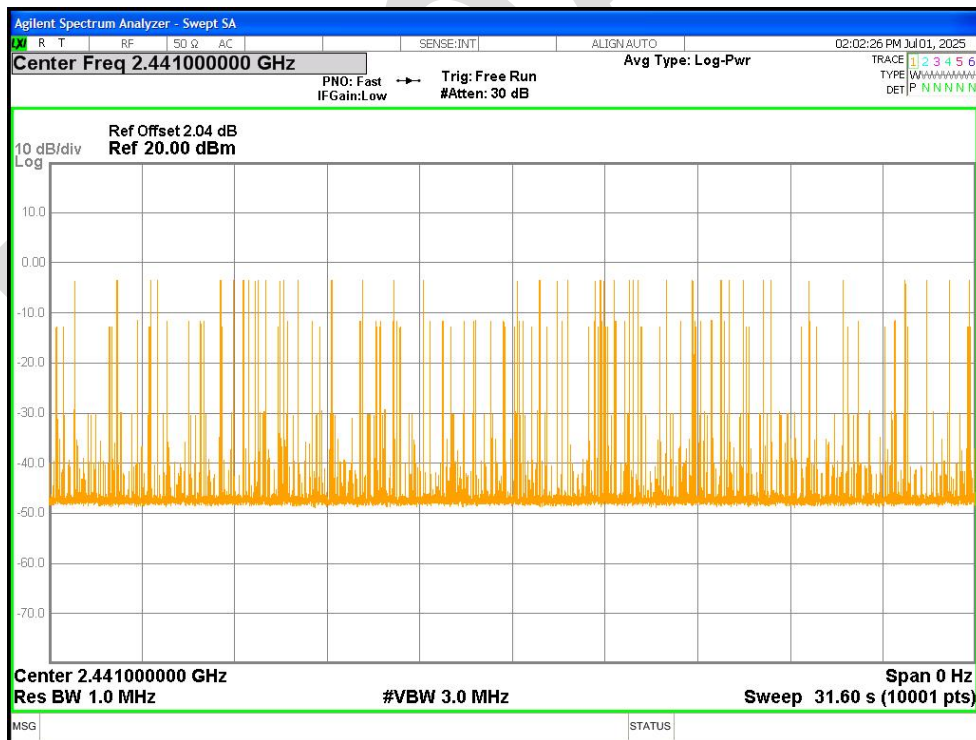
Dwell NVNT 1-DH3 2441MHz Ant1 Accumulated



Dwell NVNT 1-DH5 2441MHz Ant1 One Burst



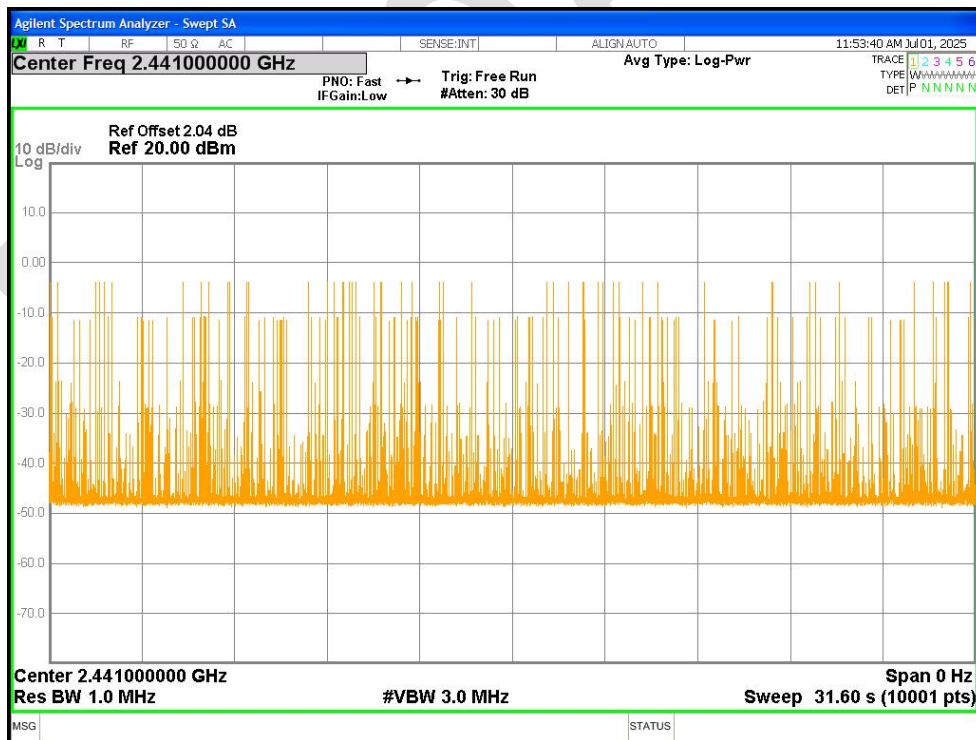
Dwell NVNT 1-DH5 2441MHz Ant1 Accumulated



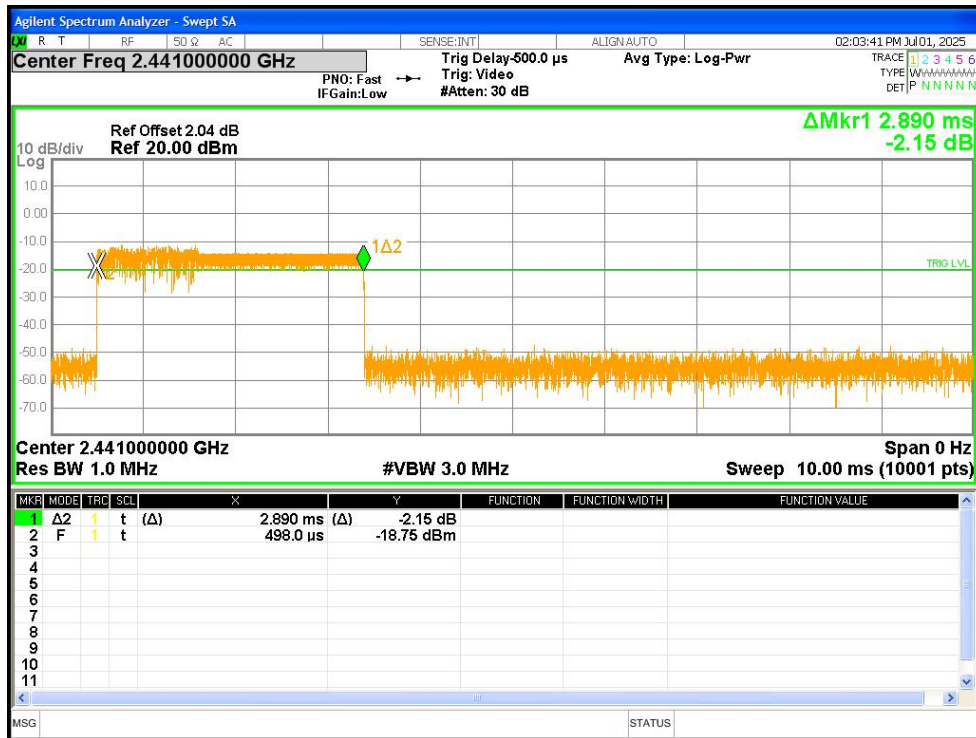
Dwell NVNT 2-DH1 2441MHz Ant1 One Burst



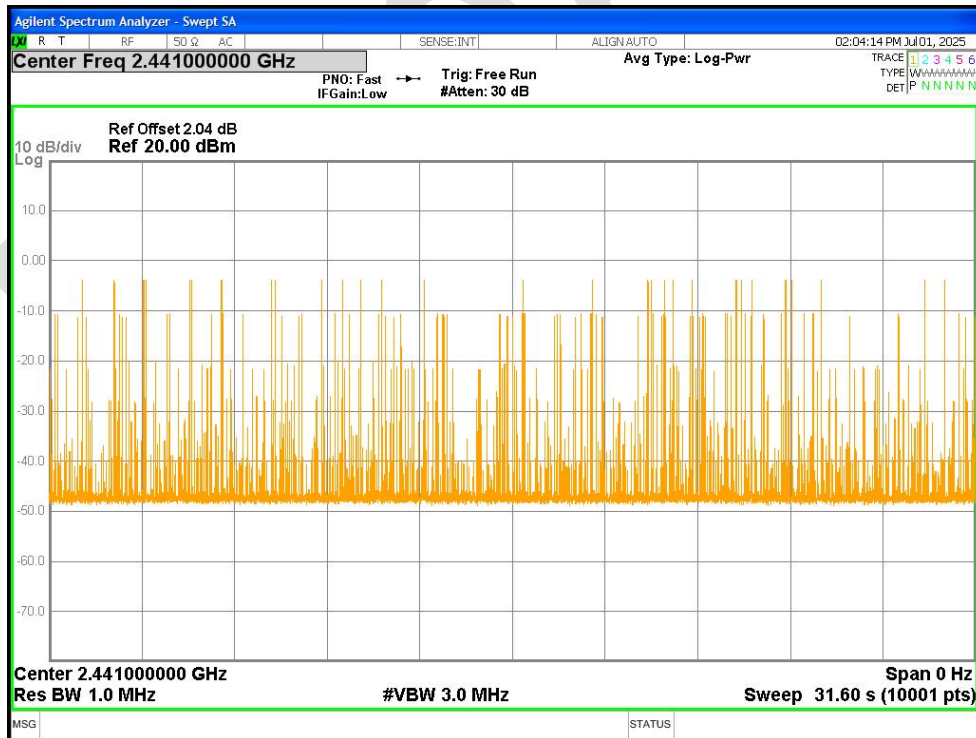
Dwell NVNT 2-DH1 2441MHz Ant1 Accumulated



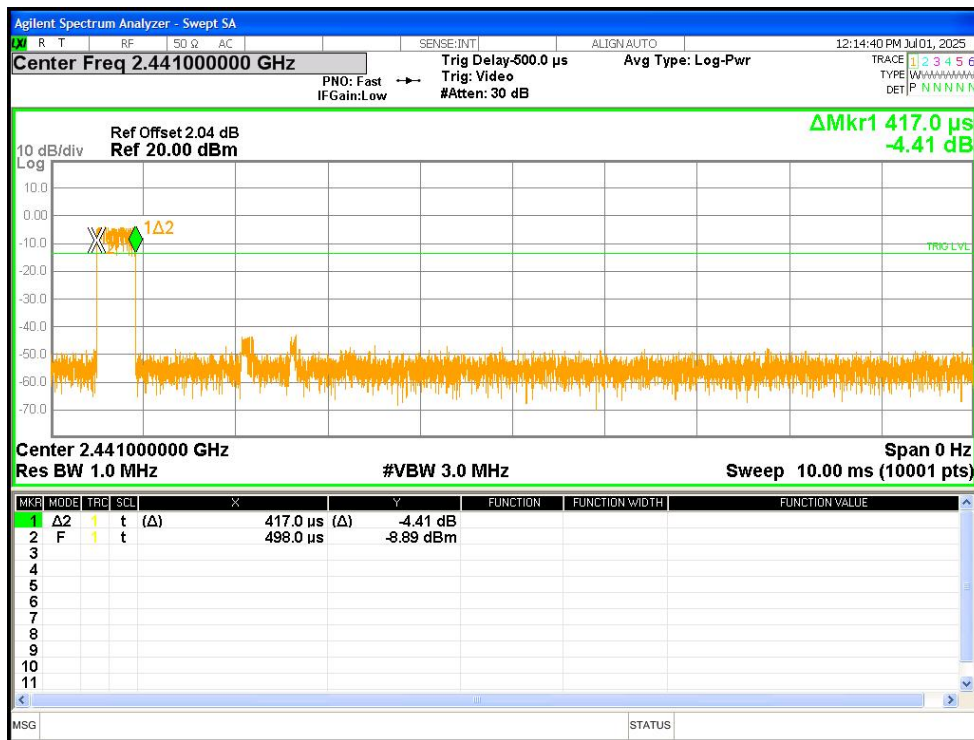
Dwell NVNT 2-DH5 2441MHz Ant1 One Burst



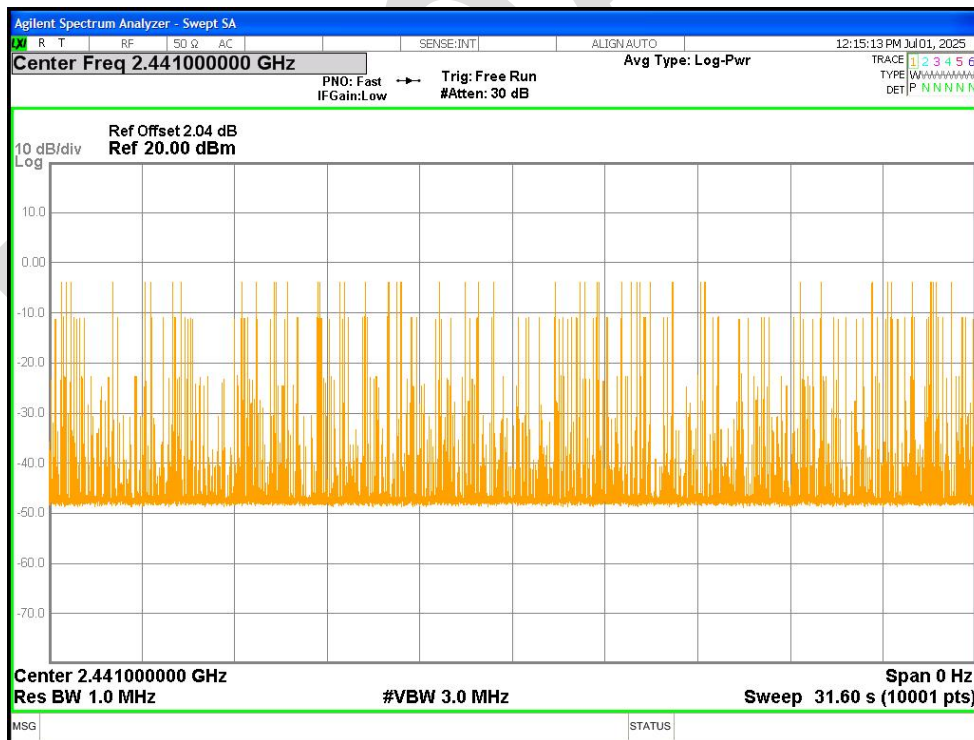
Dwell NVNT 2-DH5 2441MHz Ant1 Accumulated



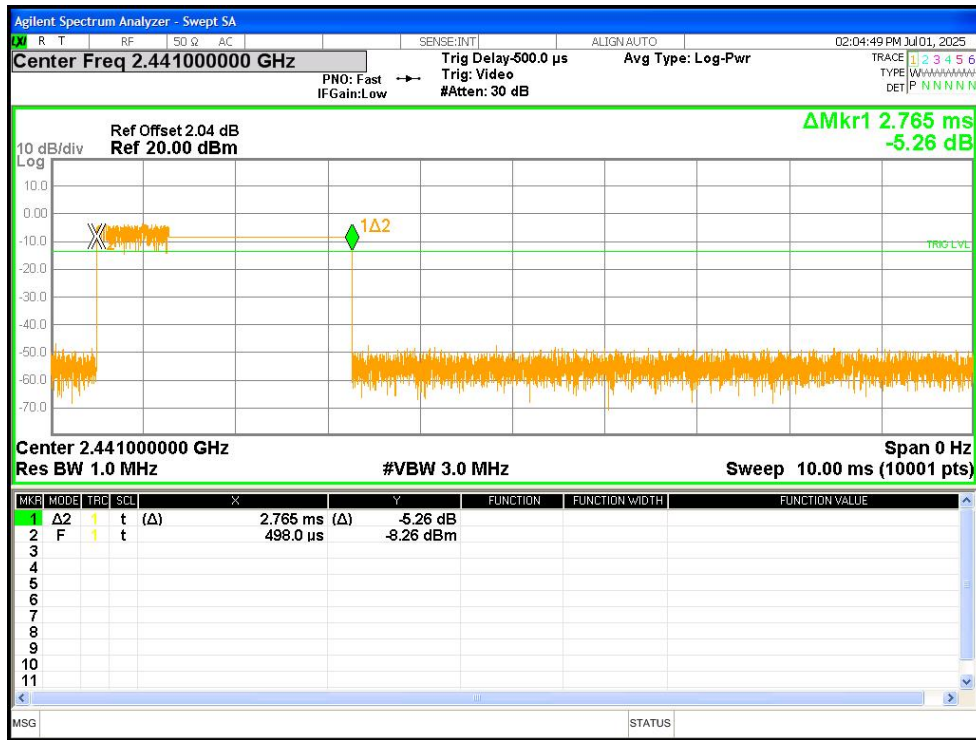
Dwell NVNT 3-DH1 2441MHz Ant1 One Burst



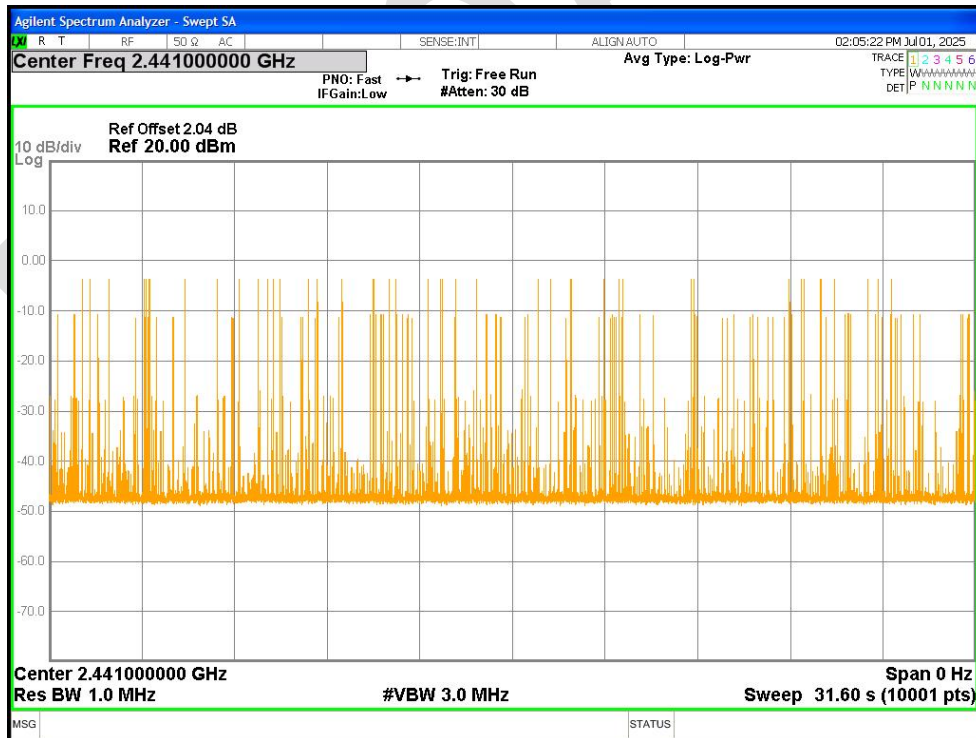
Dwell NVNT 3-DH1 2441MHz Ant1 Accumulated



Dwell NVNT 3-DH5 2441MHz Ant1 One Burst

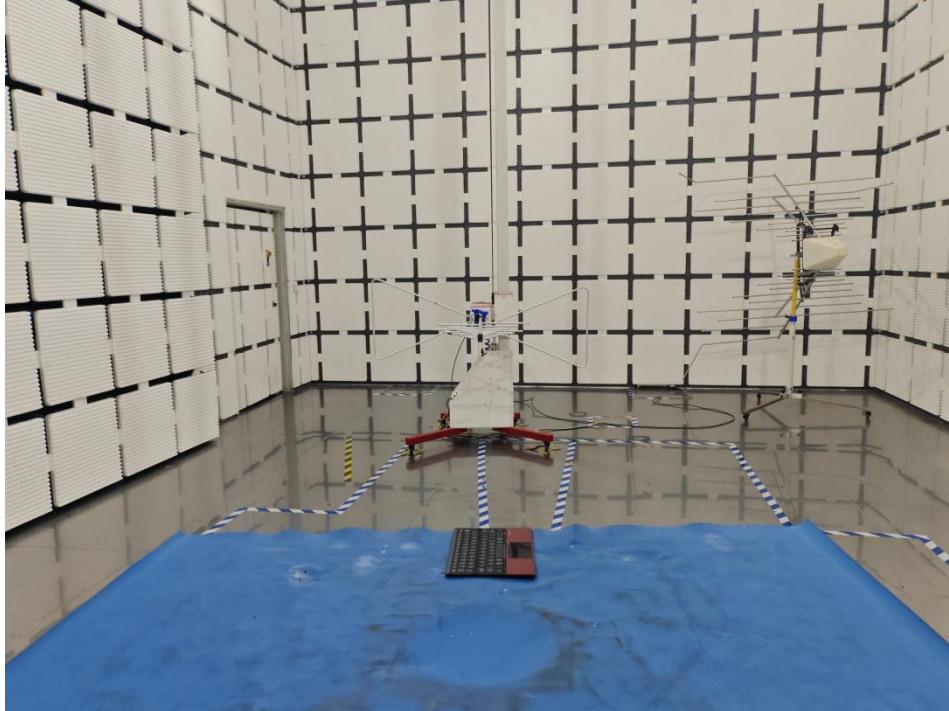


Dwell NVNT 3-DH5 2441MHz Ant1 Accumulated



Appendix B: photographs of test setup

Radiated Emissions (30MHz-1GHz)



Radiated Emissions (above 1GHz)



Conducted Emissions at Mains Terminals (150 kHz-30MHz)



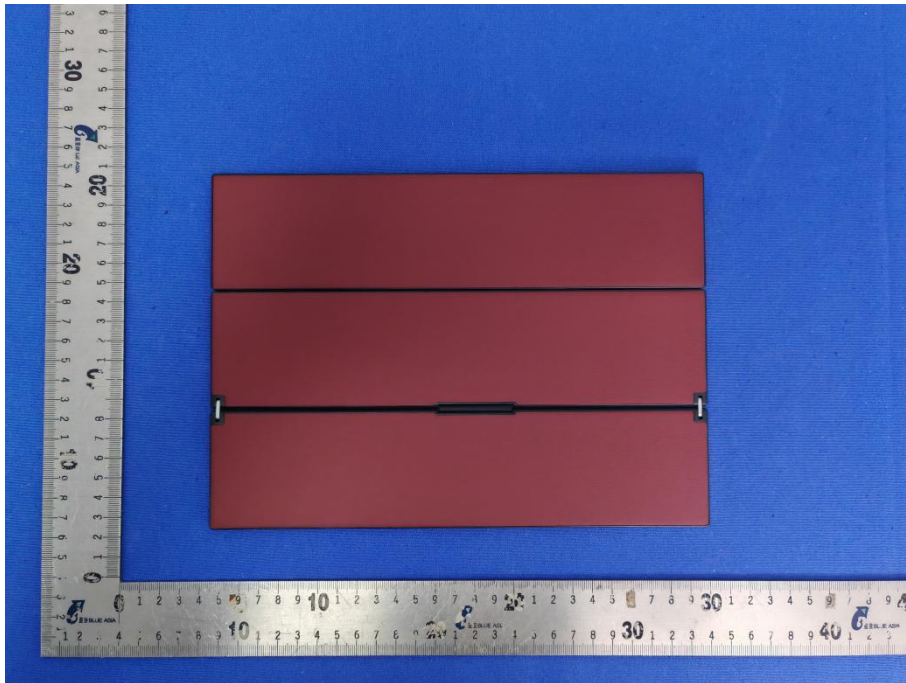
Appendix C: photographs of EUT



View of Product-1



View of Product-2



View of Product-3



View of Product-4



View of Product-5



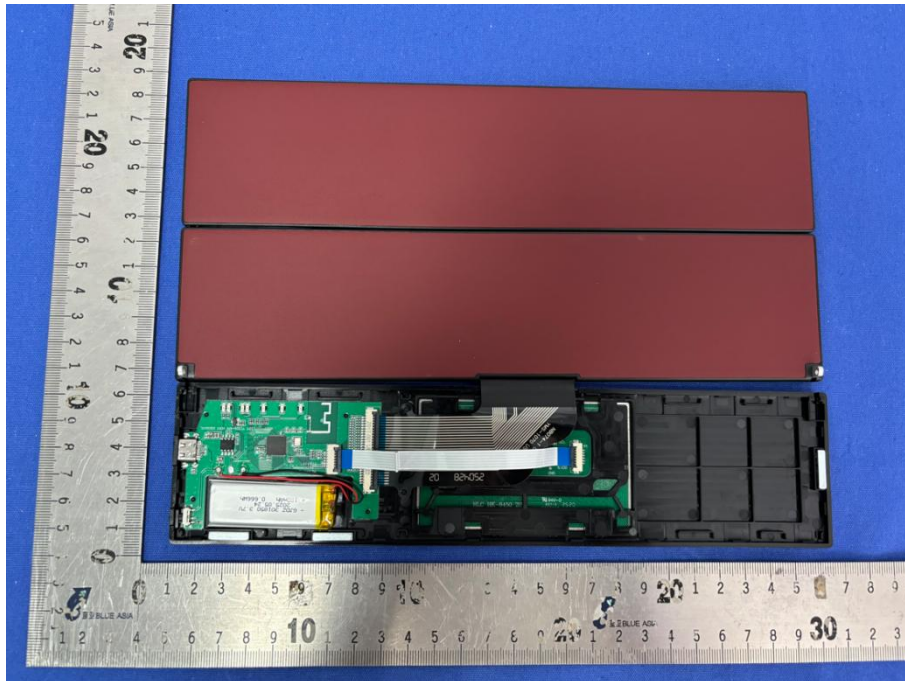
View of Product-6



View of Product-7



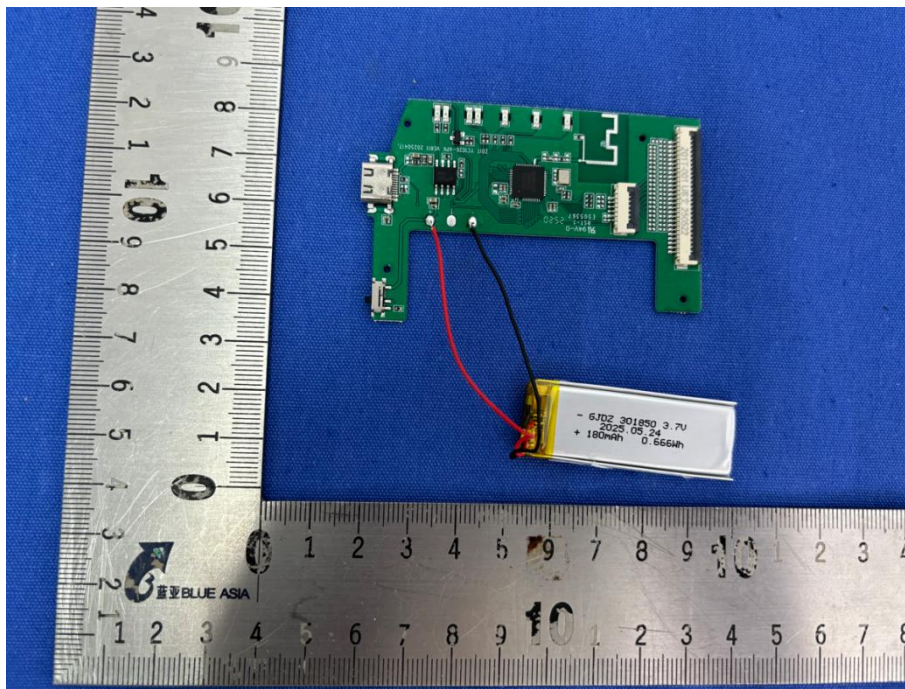
View of Product-8



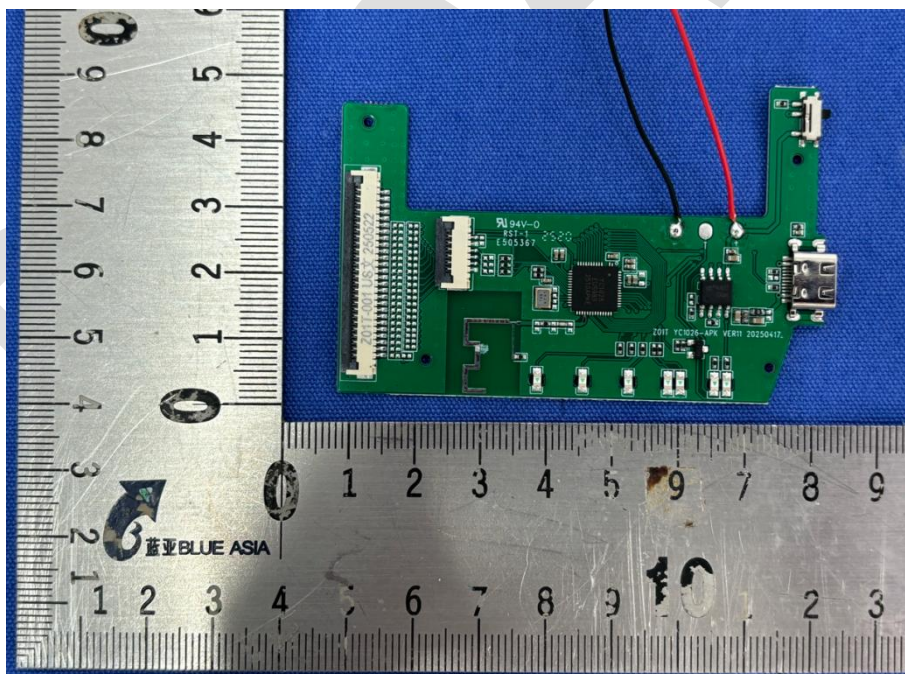
View of Product-9



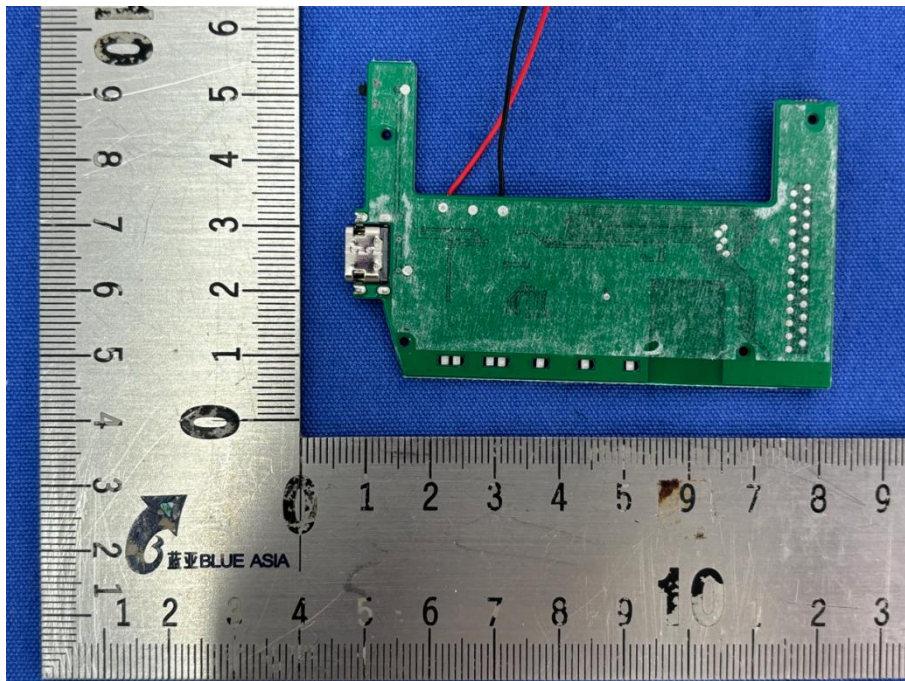
View of Product-10



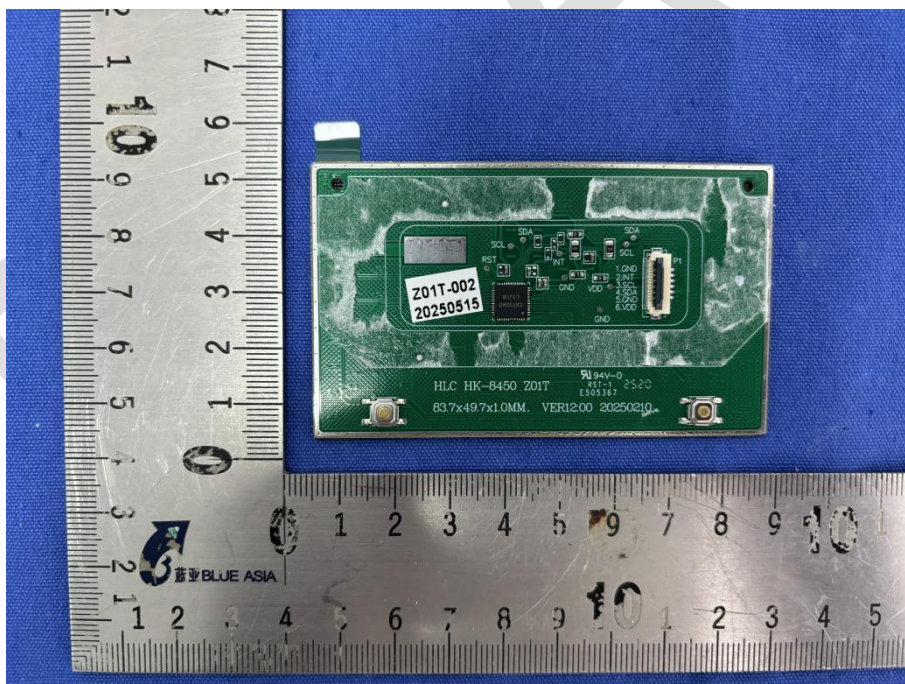
View of Product-11



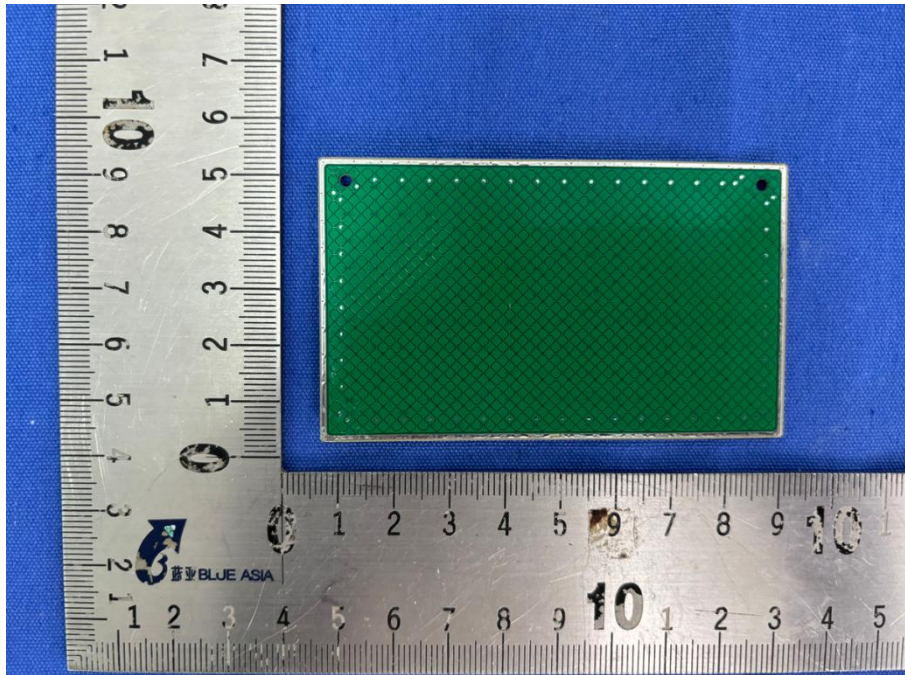
View of Product-12



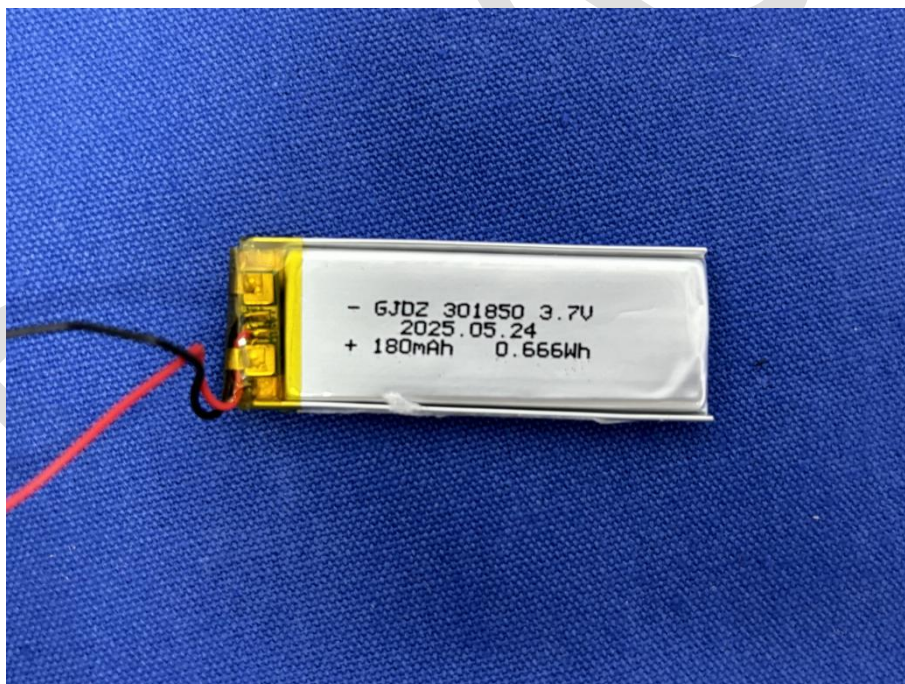
View of Product-13



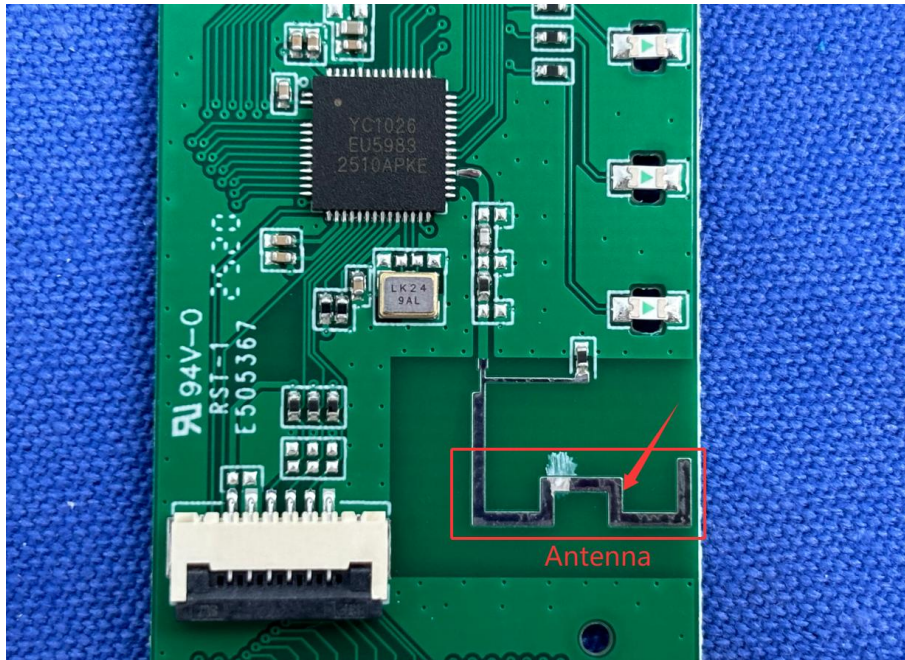
View of Product-14



View of Product-15



View of Product-16



View of Product-17

----END OF REPORT----

The test report is effective only with both signature and specialized stamp, the result(s) shown in this report refer only to the sample(s) tested. Without written approval of BlueAsia, this report can't be reproduced except in full.