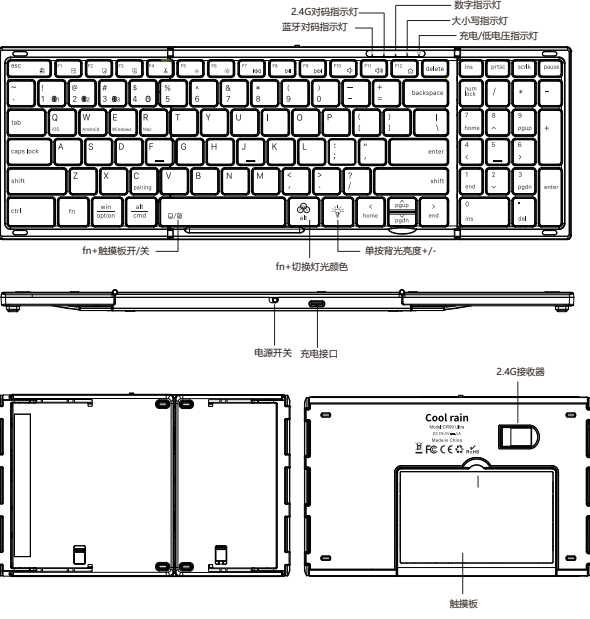


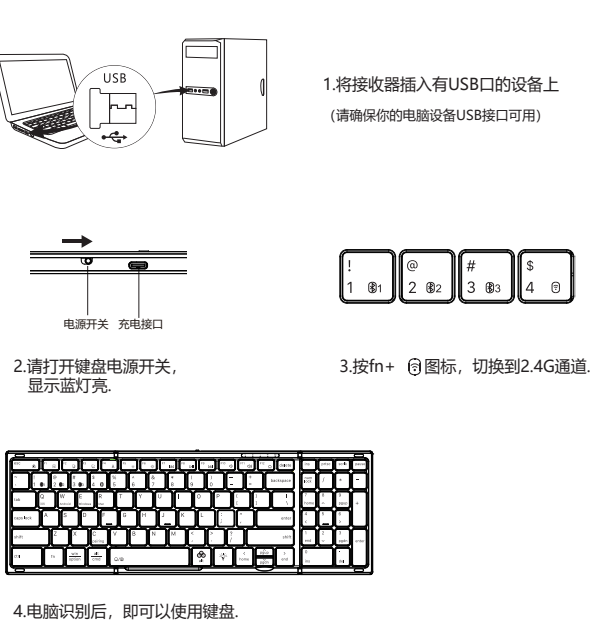
RGB 背光折叠键盘  
说明书

支持系统  
Win/iOS/Android/Mac  
注意：正确操作本产品，请仔细阅读用户手册。

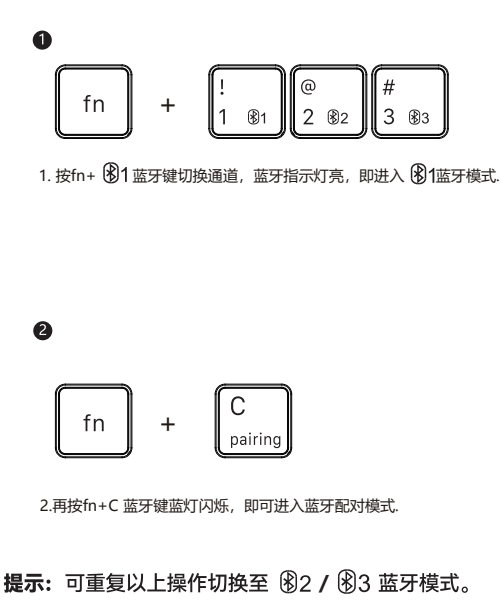
产品概述



2.4G连接



蓝牙连接（以蓝牙1模式键为例）



提示：可重复以上操作切换至 ②2 / ③3 蓝牙模式。

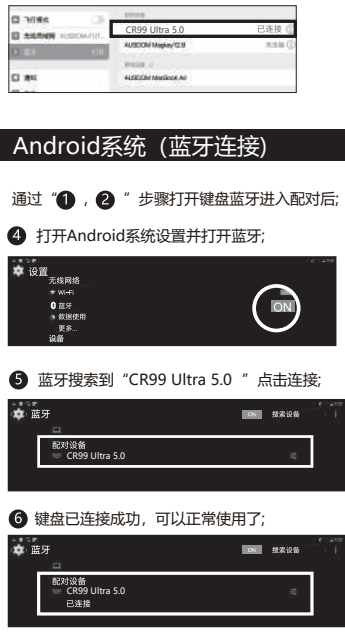
Windows系统（蓝牙连接）



iOS系统（蓝牙连接）



Android系统（蓝牙连接）



MAC os系统（蓝牙连接）



产品功能

iOS/Android	Windows/Mac	Windows/Mac
直接按	对应功能	Fn+ 对应功能
F1	全选	F1
F2	复制	F2
F3	粘贴	F3
F4	剪切	F4
F5	亮度-	F5
F6	亮度+	F6
F7	上一曲	F7
F8	暂停/播放	F8
F9	下一曲	F9
F10	音量减小	F10
F11	音量增大	F11
F12	返回桌面	F12
fn+  为循环模式(F1-F12及多媒体功能循环)		

切换语言：

Mac：control+空格键 Windows：Alt+Shift  
Android：control+空格键 / Shift+空格键

输入法切换：

Mac：control+ 空格键 Windows：control+ Shift  
Android：control+ Shift

技术规格

键盘尺寸：341.54 x 114.9 x 8.05 mm (打开)  
184.34 x 114.9 x 19.4 mm (折叠)  
触键板尺寸：101.64 x 62.96 mm  
键盘重量：328.5g  
工作距离：10 m  
锂电池容量：1200 mAh  
工作电压：3.0-4.1 V  
充电器规格：5V 1A或2A

状态显示LED

- 对码：按fn+ ⑧1 蓝牙键切换通道，通道灯闪烁，即进入 ⑧1 蓝牙模式。再按fn+ C 蓝牙键即可进入蓝牙配对模式。
- 充电：充电红灯，充满绿灯
- 低电压指示：当电压低于3.2V，红色指示灯闪烁

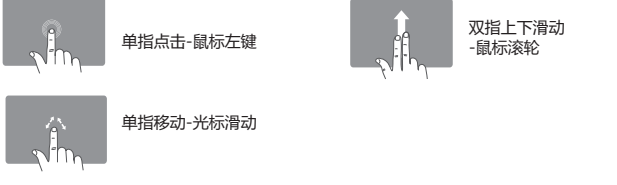
多通道连接

- 连接第1个设备前，先短按fn+ ⑧1 切换通道，再按fn+C对码，开始连接。
- 连接第2个设备前，先短按fn+ ⑧2 切换通道，再按fn+C对码，开始连接。
- 连接第3个设备前，先短按fn+ ⑧3 切换通道，再按fn+C对码，开始连接。
- 连接第4个设备前，先短按fn+ ⑧，插入接收器，开始连接。
- 在多个设备同时使用，短按fn+ ⑧ / ⑧1 / ⑧2 / ⑧3 切换，即可自由切换到已连接的设备。

触控板功能说明(Win 10)，须按fn+E切换到Win系统



触控板功能说明(Android )，须按fn+W切换到Android系统



触控板功能说明(iOS 13.4.1以上)，须按fn+Q切换到iOS系统



自定义的方法：

设置-辅助功能-触控-辅助触控-设备-点击键盘配对名，然后对单指点/三指点击进行功能自定义。

触控板功能说明(Mac)，须按fn+R切换到Mac系统



说 明：触控手势可能受系统升级更新等因素而出现变化。

故障分析

请与售后服务人员联系

知识产权信息

未经本公司的许可，禁止复制本用户手册的内容。

安全提醒

请不要打开或修理该设备，请不要在潮湿环境中使用设备，请用干布擦拭该设备。

键盘保养

1. 请勿将设备暴露于液体和潮湿的环境中或使其淋雨，请勿在浴缸、水槽、桑拿房、游泳池或蒸汽房附近使用。
2. 请勿将设备暴露于过高或过低的温度下。
3. 请勿长时间放置在阳光直射的地方。
4. 请勿靠近明火，如烹饪用炉、蜡烛或者壁炉。
5. 避免使用锋利器物刮擦产品，及时给产品进行充电以保证正常使用。

常见问题解答

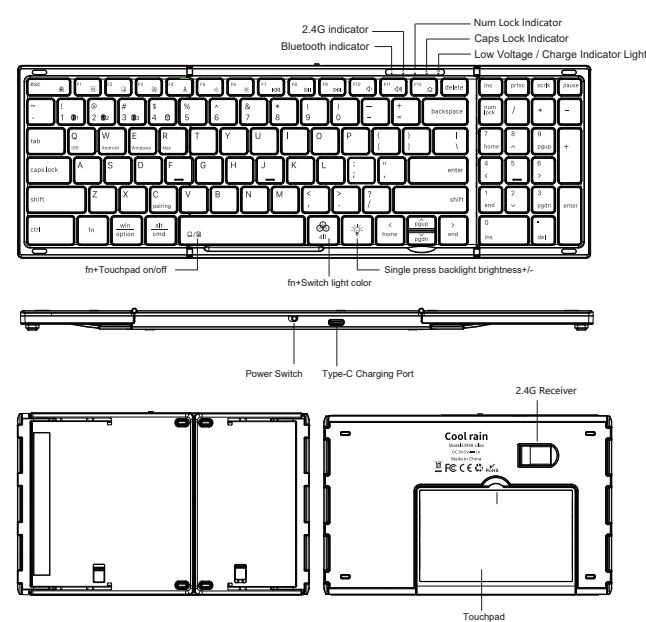
1. 平板无法连接蓝牙键盘？  
请先检查蓝牙键盘是否进入配对状态。然后再打开平板电脑蓝牙搜索设备进行连接。
2. 检查蓝牙键盘电量是否充足，电量不足也会导致无法连接，请将蓝牙键盘充电后再使用。
3. 键盘指示灯在使用途中一直闪烁？  
键盘指示灯在使用途中一直闪烁，表示电池即将没电，请尽快将键盘充电。
4. 显示蓝牙键盘断开连接？  
蓝牙键盘在一段时间内不使用，设备为了省电将自动关闭蓝牙功能，按键任意键唤醒，蓝牙连接自动恢复。

保修卡

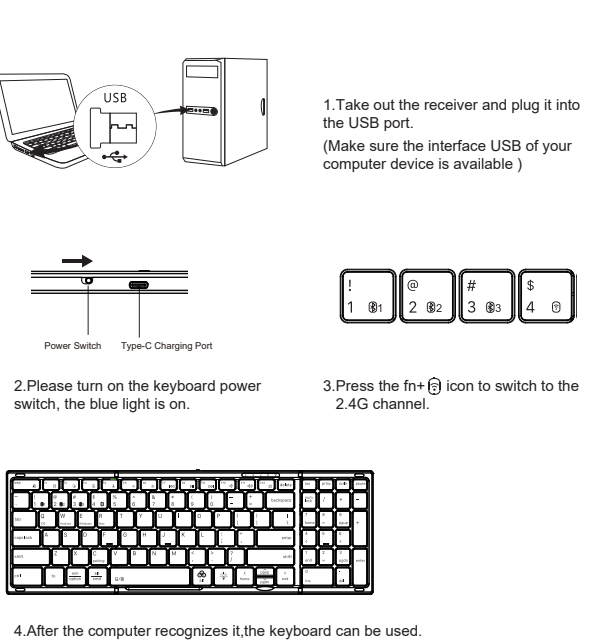
用户填写资料  
公司或个人全称  
通讯地址  
电话  
邮箱  
所购产品名称及型号  
购买日期

本保修卡不适用于以下原因造成的故障或损坏：  
(1) 意外摔落、浸水、液体污染或不当使用造成的损坏。  
(2) 不当使用或不当存放，使用过程中因产品缺陷造成损坏。  
(3) 未经授权对产品进行拆卸、改装、维修或改造。  
(4) 不可抗力因素造成的损坏。  
(5) 非本公司产品造成的损坏。

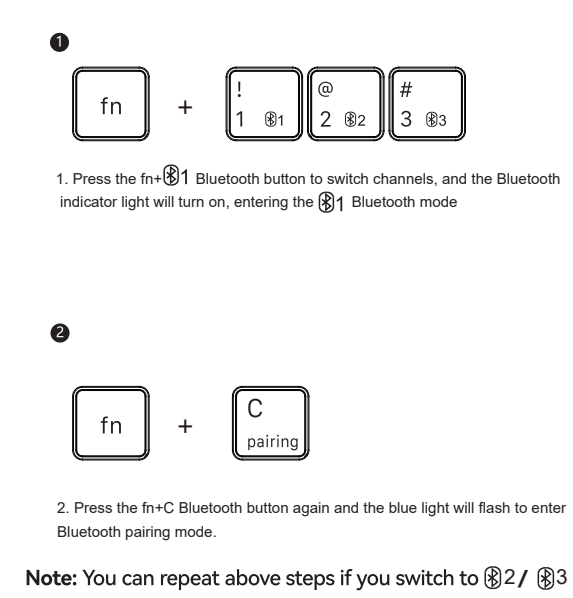
Product Overview



2.4G Connection

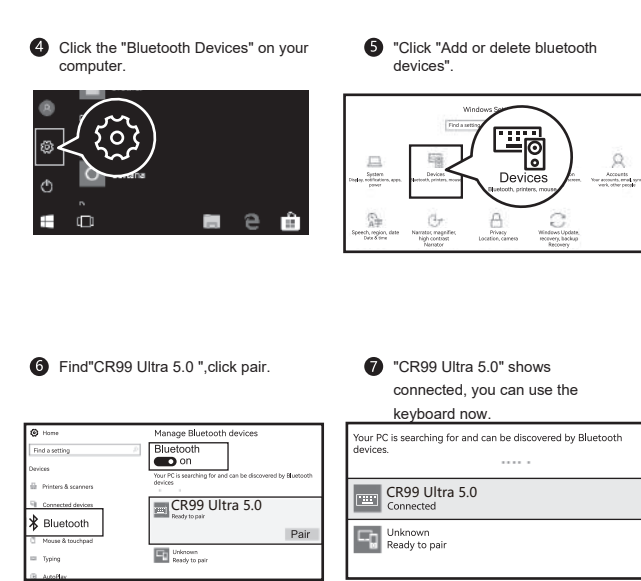


Bluetooth Connection (Take BT1 for example)

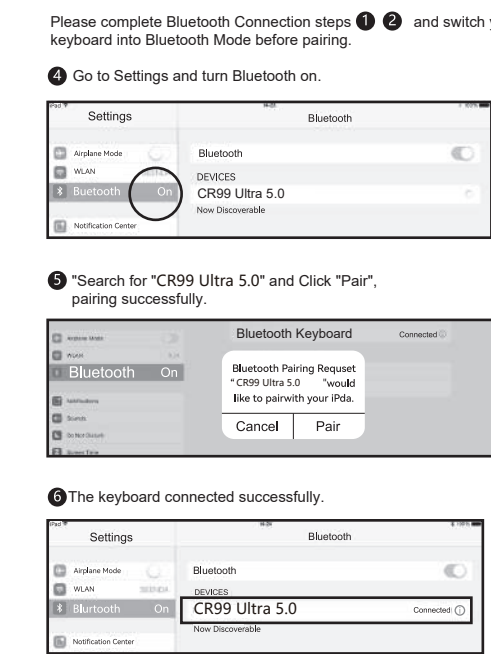


Note: You can repeat above steps if you switch to ②2 / ③3 .

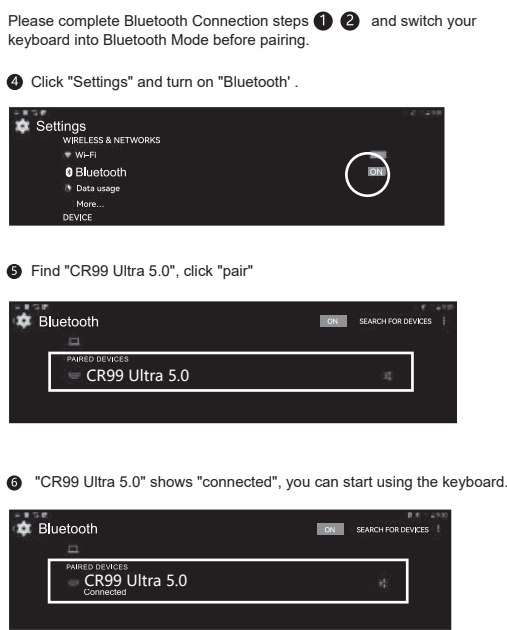
Windows System (Bluetooth Connection)



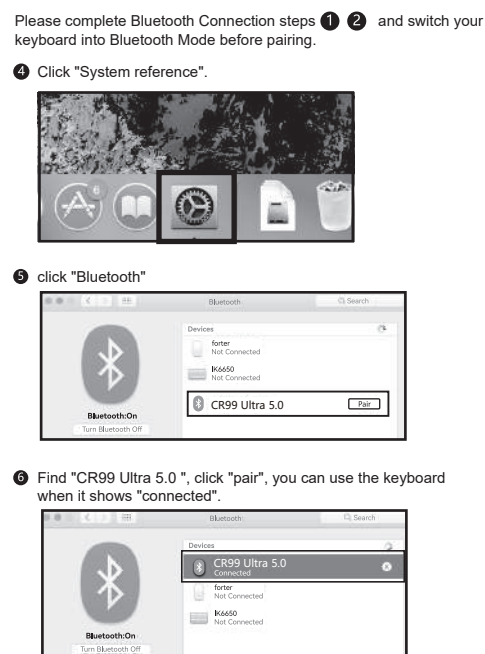
iOS System (Bluetooth Connection)



Android System (Bluetooth Connection)



MAC OS (Bluetooth Connection)



Product Function

iOS/Android	Windows/Mac	Windows/Mac
Press directly	Corresponding function	Press directly
F1	Select All	F1
F2	Copy	F2
F3	Stick	F3
F4	Cut	F4
F5	Brightness-	F5
F6	Brightness+	F6
F7	Previous	F7
F8	Play/Pause	F8
F9	Next Track	F9
F10	Volume-	F10
F11	Volume+	F11
F12	Return to Desk	F12
fn+  为循环模式(F1-F12及多媒体功能循环)		

Three system switching languages

Mac：control+Space key Windows：Alt+Shift  
Android：control+Space key / Shift+Space key

Three system input method switch

Mac：control+ Space key Windows：control+ Shift  
Android：control+ Shift

Technical Specifications

Keyboard size: 341.54 x 114.9 x 8.05 mm (open)  
184.34 x 114.9 x 19.4 mm (folding)  
Touchpad size: 101.64 x 62.96 mm  
Weight: 328.5 g  
Working distance: 10 m  
Lithium battery capacity: 1200 mAh  
Working voltage: 3.0-4.1 V  
Charger specifications: 5V 1A or 2A

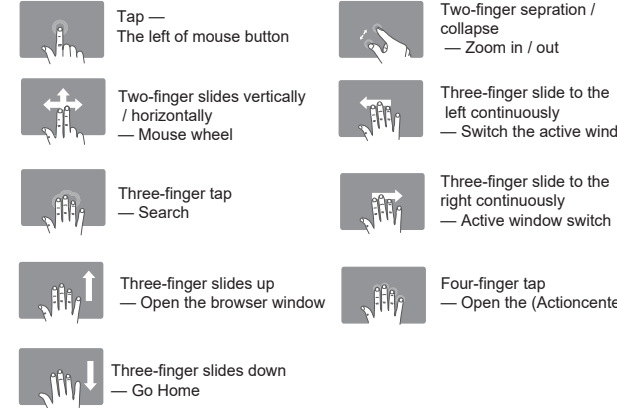
Status Display LED

- Connect：Press the fn+ ⑧1 Bluetooth button to switch channels, and the Bluetooth indicator light will turn on, entering the ⑧1 Bluetooth mode.
- Charging：Charging red light, fully charged green light
- Low Voltage Indication：When the voltage is below 3.2 V, red light twinkles.

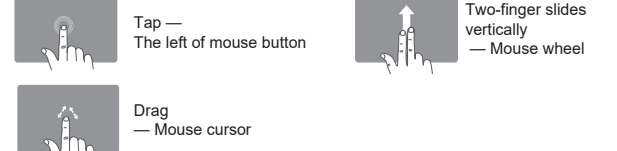
Multi-channel connection

- Before connecting the first device, short press fn+ ⑧1 to switch channels, then press fn+C to start the connection
- Before connecting the second device, short press fn+ ⑧2 to switch channels, then press fn+C to start the connection
- Before connecting the third device, short press fn+ ⑧3 to switch channels, then press fn+C to start the connection
- Before connecting the 2.4G device, short press fn+ ⑧ to insert the receiver and start the connection
- To use multiple devices at the same time, Short press fn+ ⑧ / ⑧1 / ⑧2 / ⑧3 to switch to the connected devices freely .

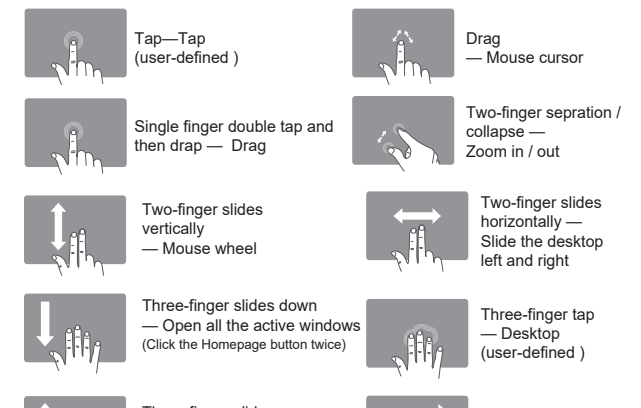
Touchpad function description (Windows10), press fn+E to switch to Windows system



Touchpad function description (Android), press fn+W to switch to the Android system



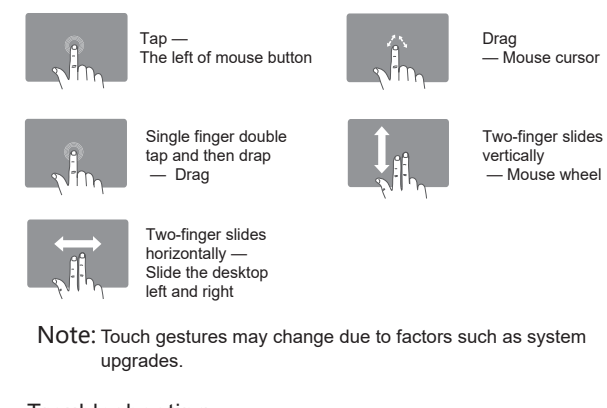
Touchpad function description (iOS 13.4.1 and above), press fn+Q to switch to the iOS system



User-defined:

Settings-Auxiliary Functions-Touch-Auxiliary Touches-Device-Click the keyboard's pairing name, and then customize the function of single finger, Three-finger'.

Touchpad function description (Mac), press fn+R to switch to the Mac system



Note: Touch gestures may change due to factors such as system upgrades.

Troubleshooting

Please contact the after-sales service.

Copyright

It is forbidden to reproduce any part of this manual without the permission of seller.

Safety instructions

Do not open or repair this device, Do not use the device in a damp environment. Clean the device with a dry cloth.

Keyboard Maintenance

1. Please keep the keyboard away from liquid or humid environment, saunas, swimming pool, steam room and don't let the keyboard get wet in the rain.
2. Please don't expose the keyboard at too high or too low temperature condition.
3. Please don't put keyboard under sun for a long time.
4. Please don't put keyboard close to the flame, such as cooking stoves, candles or fireplace.
5. Avoid sharp objects scratching products, timely to recharge products to ensure the normal use.

FAQ

1. The tablet PC can't connect the BT keyboard?  
At first check the BT keyboard is into match code state, then open the table PC Bluetooth searching.
2. Checking the BT keyboard Battery is enough, the battery low is also lead to can't connect, you need charge.
3. The keyboard indication light always flashing when use?  
Keyboard indication always flashing when use, is means the keyboard will be no power, please charge the power as soon as possible.
4. The table PC display BT keyboard is disconnected?  
The Bluetooth keyboard is not used for a period of time, the device will automatically enter the sleep state in order to save power. Press any key on the keyboard to wake up, and the Bluetooth connection will be automatically restored.

This device complies with part 15 of the FCC Rules. Operation is subject to the following two conditions: (1) This device may not cause harmful interference, and (2) this device must accept any interference received, including interference that may cause undesired operation.

Any changes or modifications not expressly approved by the party responsible for compliance could void the user's authority to operate the equipment.

NOTE: This equipment has been tested and found to comply with the limits for a Class B digital device, pursuant to Part 15 of the FCC Rules. These limits are designed to provide reasonable protection against harmful interference in a residential installation. This equipment generates, uses and can radiate radio frequency energy and, if not installed and used in accordance with the instructions, may cause harmful interference to radio communications. However, there is no guarantee that interference will not occur in a particular installation.

If this equipment does cause harmful interference to radio or television reception,

which can be determined by turning the equipment off and on, the user is encouraged to try to correct the interference by one or more of the following measures:

— Reorient or relocate the receiving antenna.

— Increase the separation between the equipment and receiver.

— Connect the equipment into an outlet on a circuit different

from that to which the receiver is connected.

— Consult the dealer or an experienced radio/TV technician for help.

The device has been evaluated to meet general RF exposure requirement. The device can be used in portable exposure condition without restriction.

Changes or modifications not expressly approved by the party responsible for compliance could void the user's authority to operate the equipment.