



QUICK START GUIDE

WELCOME

Thank you for purchasing the mJoose smartphone case. The case safely improves cell signals giving you more bars in more places. It is the only case that provides up to 100 times signal amplification and up to 120% battery life, all while reducing radiation exposure by up to 70%. More signal Joose, more battery boost, all inside an attractive, protective case.

LIMITED WARRANTY

At MoJoose, our goal is to provide products that meet the highest quality of manufacturing standards. All of our products come with a 1-year limited manufacturer warranty from the date of purchase against defects in materials and workmanship. It is important that you register your product at mjoose.com/product-registration and keep your receipt as proof of purchase. Failure to do so may void the warranty. By using this product, you agree to the mJoose terms of use located at mjoose.com/mjoose-terms-of-use.

CUSTOMER SERVICE AND SUPPORT

Send all inquiries to: support@mjoose.com
FAQs: <https://mjoose.com/support/>

Package contains:

mJoose Case | Micro USB Cable

Quick start guide

mjoose.com

Part #770-00001 Rev. C

HOW TO USE

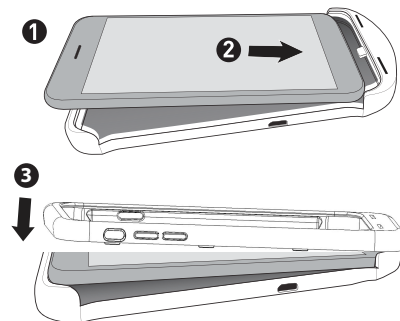
CAUTION: Failure to follow this procedure properly may result in damage to your smartphone or the case.

FIRST USE:

Before inserting your phone, plug the USB cable into the case and a power source. When the light bars on the case illuminate, your case is ready to use.

INSERTING YOUR SMARTPHONE INTO THE CASE

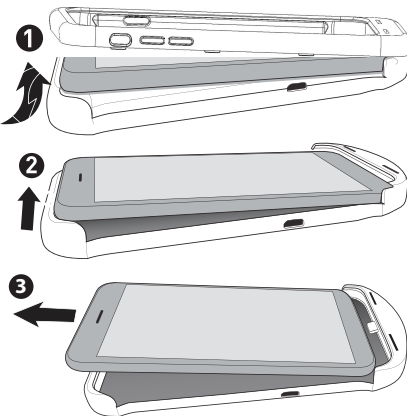
1. Lay your smartphone on top of the case with the connector aligned with the port.
2. Slide your smartphone towards the connector while seating it.
3. Gently push the smartphone into the case.
4. Slide the protective frame onto the bottom of the case and gently snap the protective frame over the top of the case.



REMOVING YOUR SMARTPHONE FROM THE CASE

Note: If the phone is not removed carefully, it may cause damage to the connector.

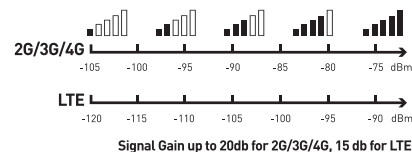
1. Gently pull up on the top corner of the protective frame to remove it.
2. Gently grip the edge of the case and push with your index finger against the camera window, until the top of the phone is fully removed.
3. Carefully slide the smartphone away from the connector, unseating it.



SIGNAL AMPLIFICATION SWITCH

Slide the switch to turn on the signal amp whenever you are in a weak coverage area. The light bars indicate the case is on. They are not used to display signal strength.

While the signal is strengthened as soon as you flip the switch, depending upon network conditions, you may not see this reflected in the quantity of signal bars on your smartphone. For example, if your connection is "upgraded" from 2G/3G to 4G, the scale of the network indicator bars is not the same. The mJoose case gives your smartphone access to more of the network and stronger connections to the towers.



The signal amp can be left on or turned off when not in use. It does not add any significant drain to the case battery and no drain to the smartphone battery. However, it is best to turn the signal amp off when your smartphone will not be used for an extended period of time.

BATTERY BOOST ON/OFF SWITCH

Start charging your smartphone with the mJoose Case by sliding the battery switch on - you will see the phone's charging icon indicate the charge has started. The LEDs will light up to indicate the case's battery level.

The battery life indicator lights illuminate blue every

BATTERY BOOST ON/OFF SWITCH - cont.

time the battery switch is turned on. You can confirm that the case is charging by checking the battery icon on your smartphone.

You can determine the case's battery level by the number of LED lights that illuminate when you turn the phone on.

100% 75% 50% 25%



PRIORITY CHARGING AND SYNC

Connect the Micro USB cable to the side of the mJoose Case and plug into your computer or any USB power source. Your phone charges first and then the case charges.

Our case enables pass-through sync and charging while connected to a computer.

The battery on/off switch will turn red when you plug it in and it is being charged. The red light will turn off when it is fully charged.

The battery on/off switch light will blink blue when the case needs to be recharged.

NOTE: using mJoose charging will charge your phone faster than using an wall outlet.

