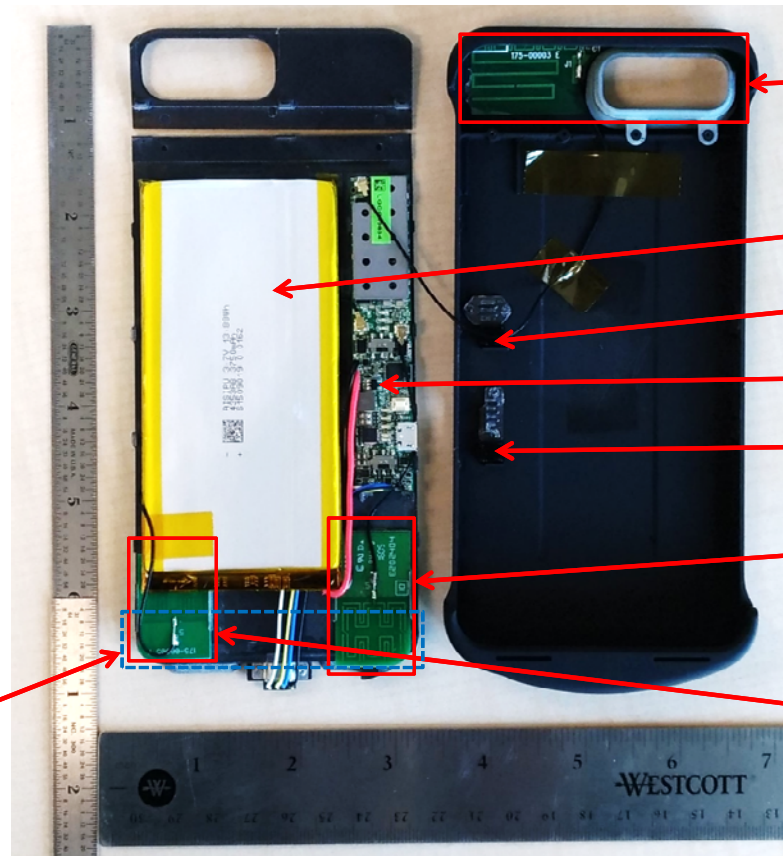


# Internal of MJ-i7-P1001

MJ-i7-P1001 has three antennas including a donor antenna and two probe antennas supporting low-band and high-band (refer to “MJ-i6B-1001 RF BLOCK DIAGRAM”).

The donor antenna is implemented on a flexible PCB; the probe antennas are printed on a rigid PCB. All antennas are glued to the plastic housing.

iPhone PRIMARY ANTENNA, which receives the signal from the probe antennas.



DONOR ANTENNA

BATTERY

SIGNAL JOOSE SWITCH

PCBA

BATTERY BOOST SWITCH

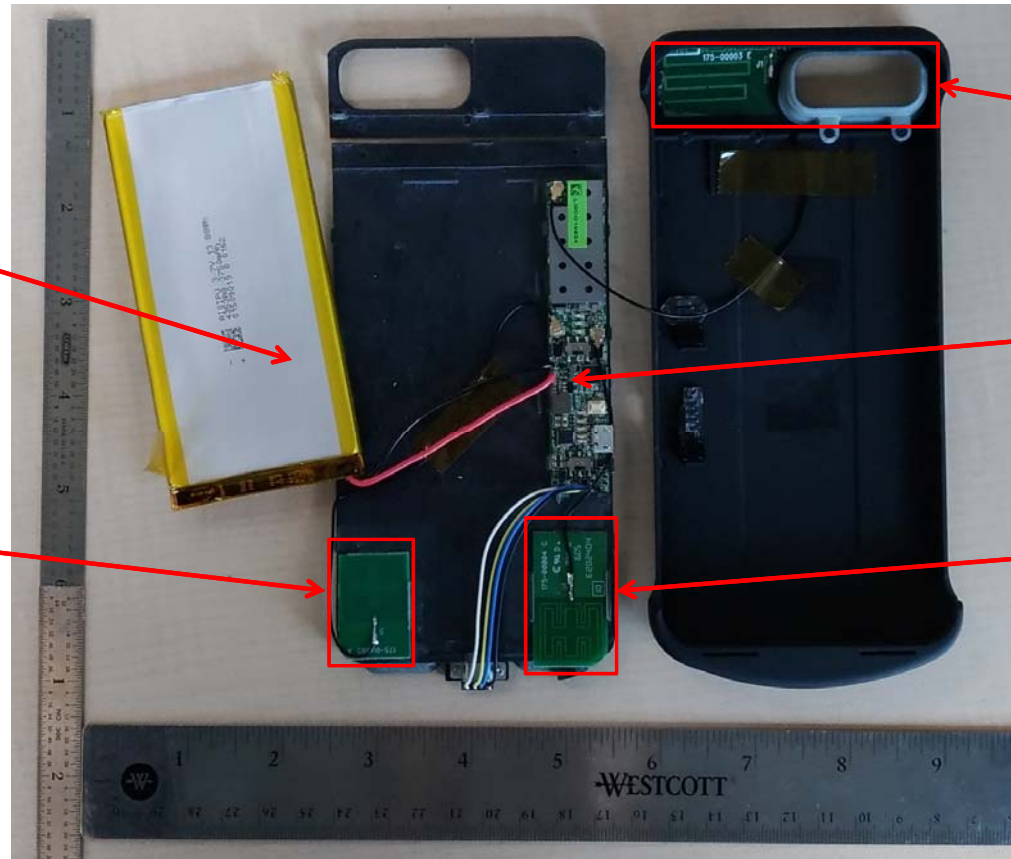
PROBE ANTENNA  
(Low-band)

PROBE ANTENNA  
(High-band)

# Internal of MJ-i7-P1001 (cont.)

The battery is separated from its original location to show the underneath, which is the plastic housing.

PROBE ANTENNA  
(High-band)



DONOR ANTENNA

PCBA FRONTSIDE

PROBE ANTENNA  
(Low-band)