

# Photo of 2AFV8

---

Model Number: MJ-i7-I1001

Host Phone: Apple iPhone 7 (FCC ID: BCG-E3085A)

November 11, 2016

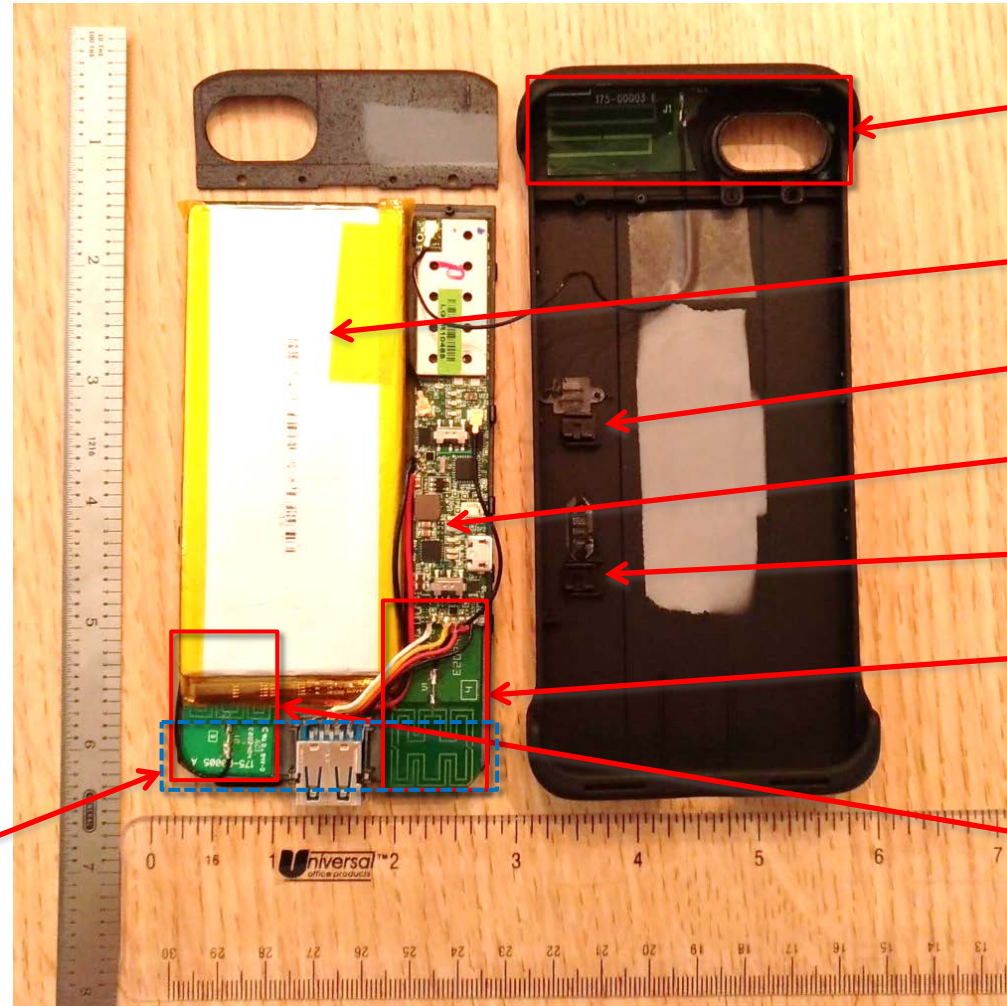


# Internal of 2AFV8

2AFV8 has three antennas including a donor antenna and two probe antennas supporting low-band and high-band (refer to “MJ-i6B-1001 RF BLOCK DIAGRAM” (FCC ID 2AFV8-CAMJPI6B1001)).

The donor antenna is implemented on a flexible PCB; the probe antennas are printed on a rigid PCB. All antennas are glued to the plastic housing.

iPhone PRIMARY ANTENNA, which receives the signal from the probe antennas.



DONOR ANTENNA

BATTERY

SIGNAL JOOSE SWITCH

PCBA

BATTERY BOOST SWITCH

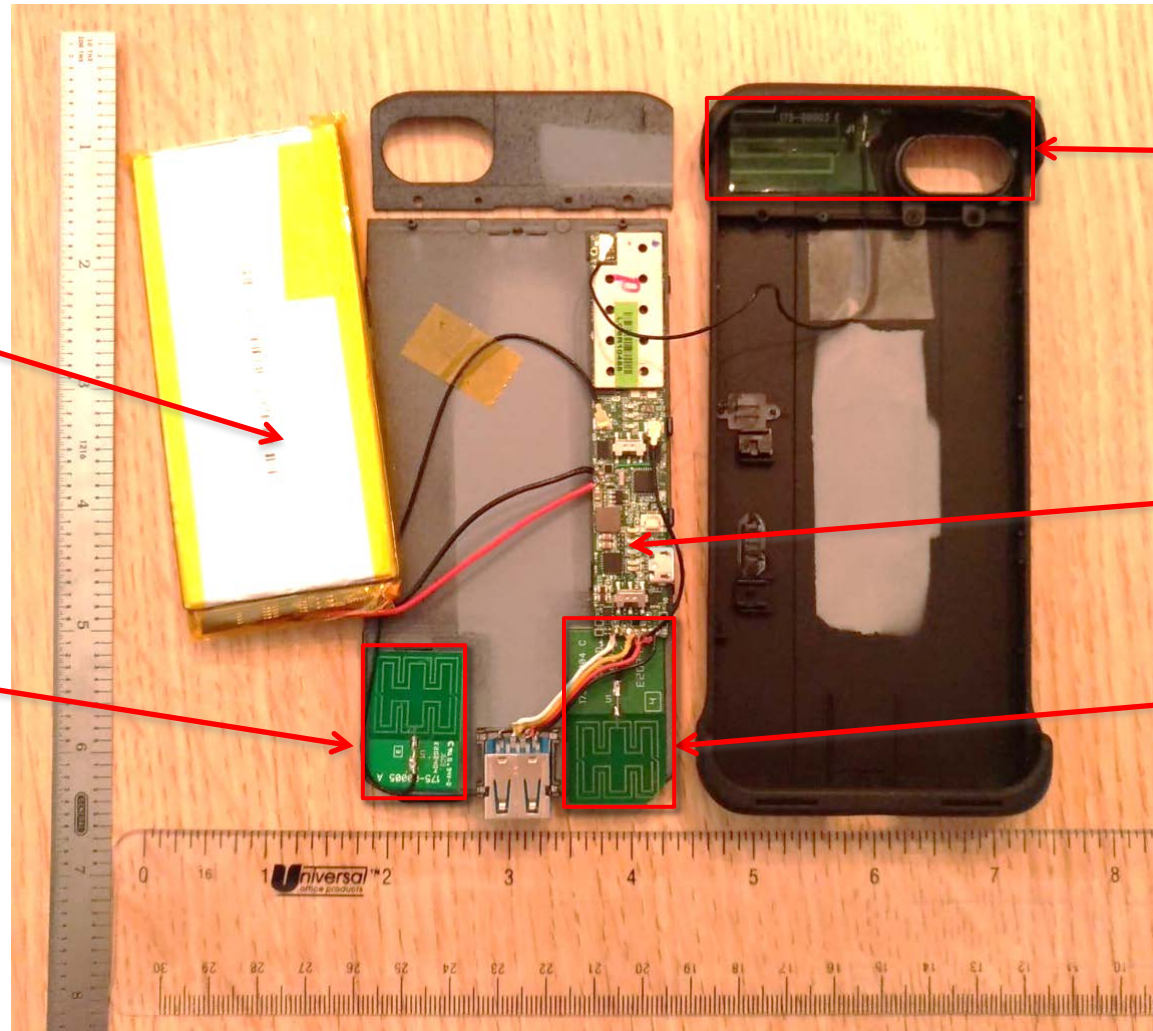
PROBE ANTENNA  
(Low-band)

PROBE ANTENNA  
(High-band)

# Internal of 2AFV8

The battery is separated from its original location to show the underneath, which is the plastic housing.

PROBE ANTENNA  
(High-band)



DONOR ANTENNA

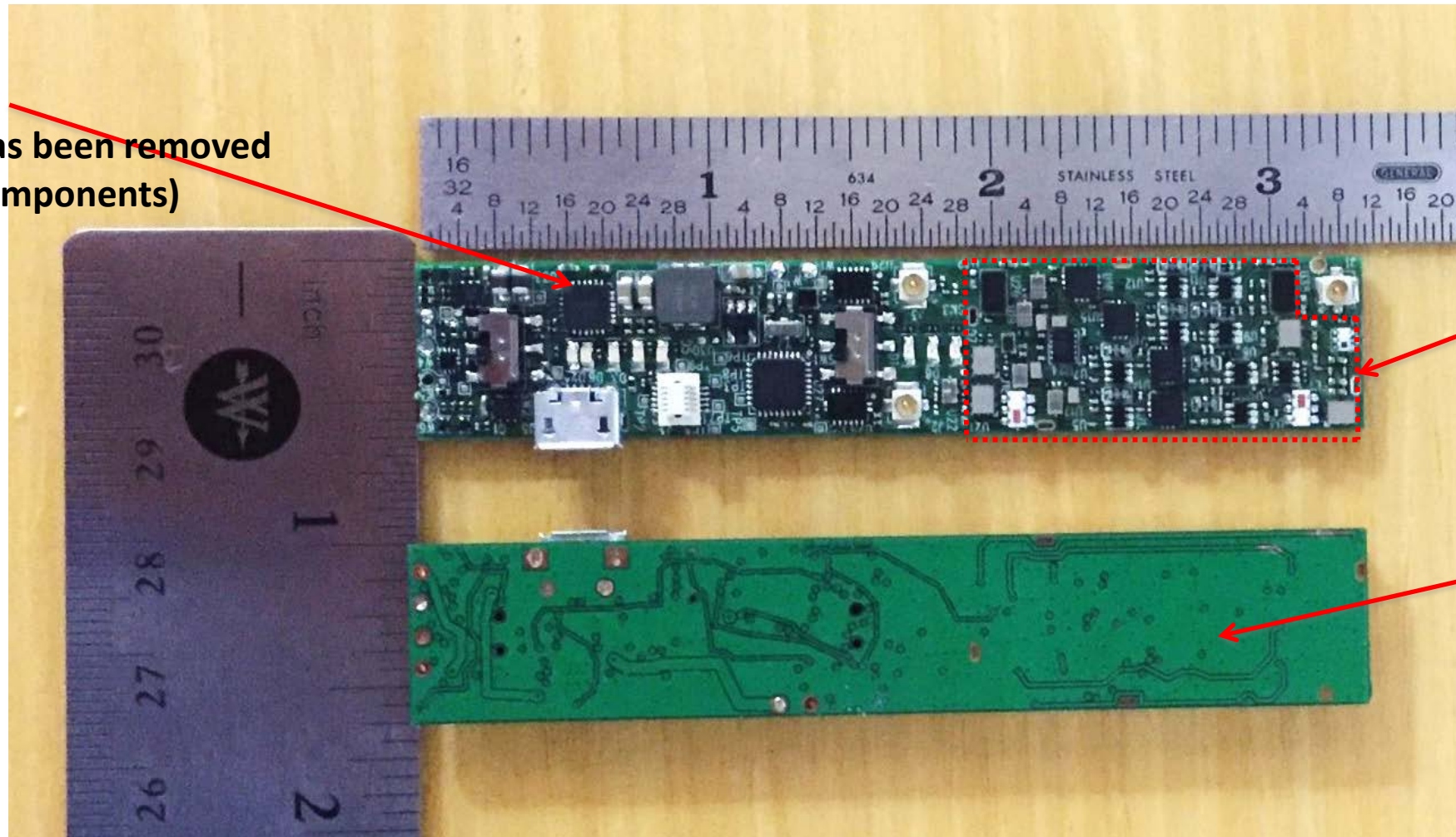
PCBA FRONTSIDE

PROBE ANTENNA  
(Low-band)



# PCBA (Front and Back)

**PCB FRONTSIDE**  
(The shield can has been removed  
to show whole components)



**SHIELD CAN  
LOCATION**

**PCBA BACKSIDE**