

Photo of 2AFV8

Model Number: MJ-SG7B-1001

Host Phone: Samsung Galaxy S7 Edge (FCC ID: A3LSMG930US)

October 13, 2016

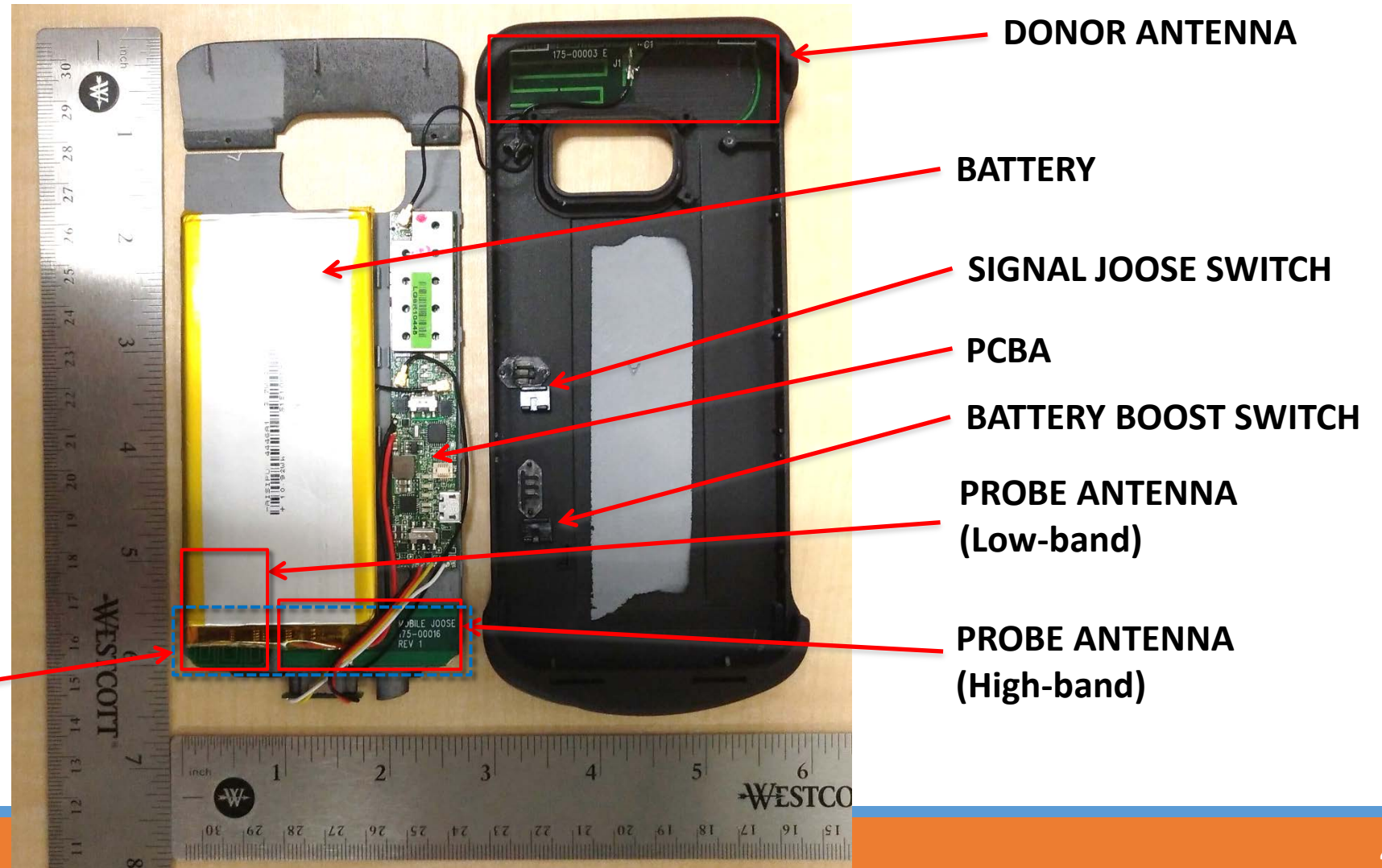


Internal of 2AFV8

2AFV8 has three antennas including a donor antenna and two probe antennas supporting low-band and high-band (refer to “MJ-i6B-1001 RF BLOCK DIAGRAM”).

The donor antenna is implemented on a flexible PCB; the probe antennas are printed on a rigid PCB. All antennas are glued to the plastic housing.

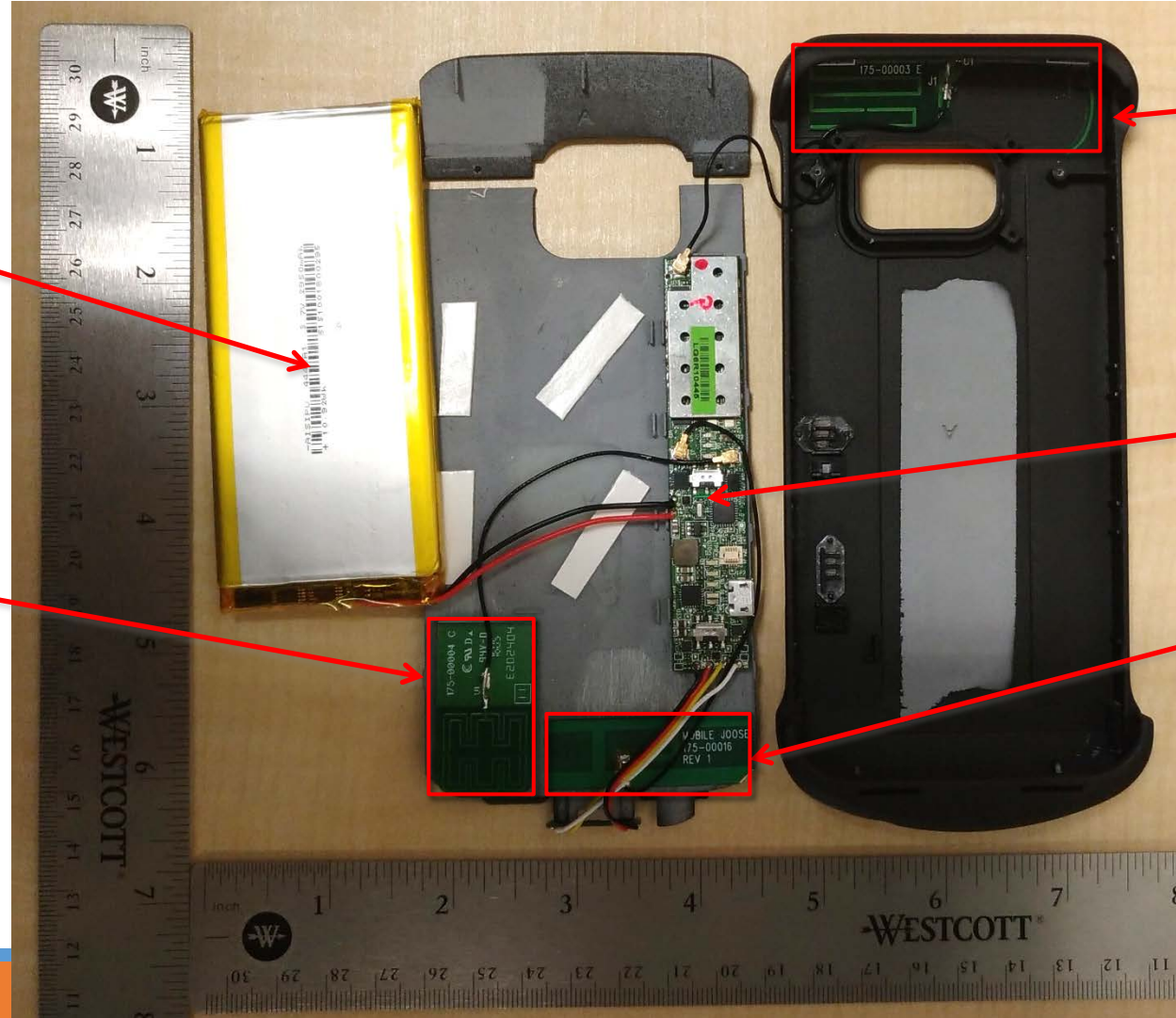
Galaxy S7 PRIMARY ANTENNA, which receives the signal from the probe antennas



Internal of 2AFV8

The battery is separated from its original location to show the underneath, which is the plastic housing.

PROBE ANTENNA
(Low-band)



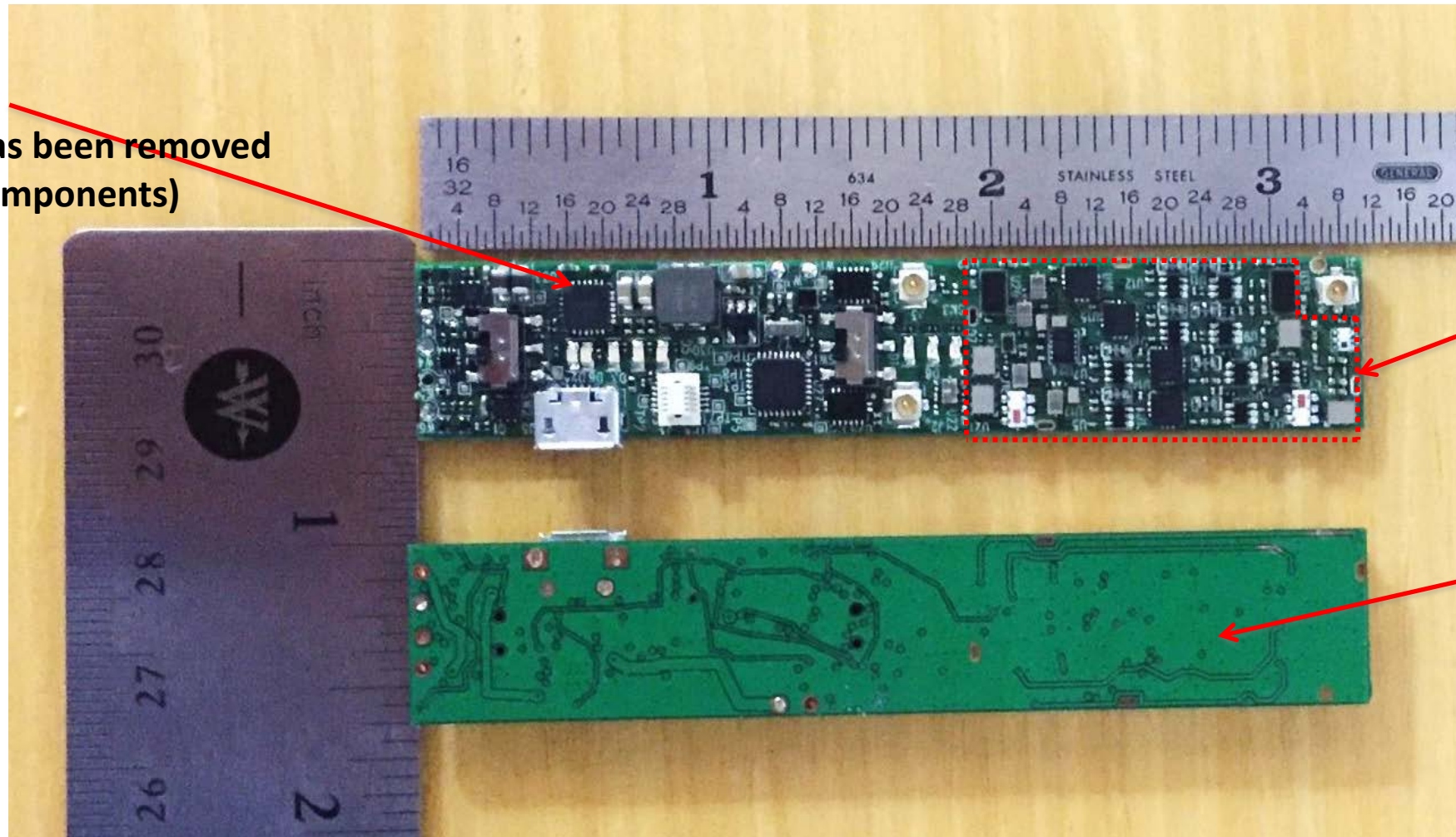
DONOR ANTENNA

PCBA FRONTSIDE

PROBE ANTENNA
(High-band)

PCBA (Front and Back)

PCB FRONTSIDE
(The shield can has been removed
to show whole components)



**SHIELD CAN
LOCATION**

PCBA BACKSIDE