

# Photo of 2AFV8

---

May 20, 2016



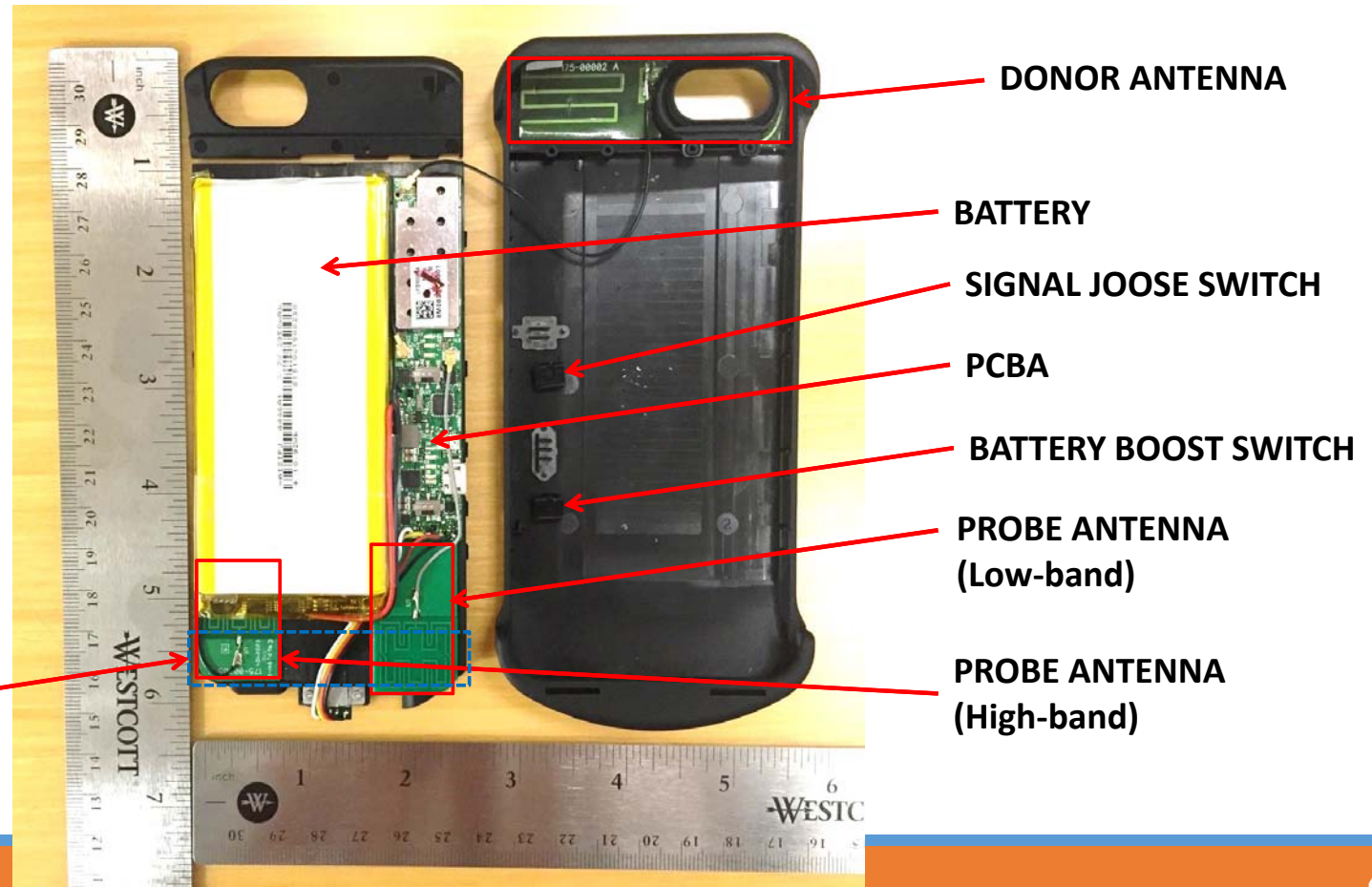
CONFIDENTIAL

# Internal of 2AFV8

2AFV8 has three antennas including a donor antenna and two probe antennas supporting low-band and high-band (refer to “MJ-i6B-1001 RF BLOCK DIAGRAM”).

The donor antenna is implemented on a flexible PCB; the probe antennas are printed on a rigid PCB. All antennas are glued to the plastic housing.

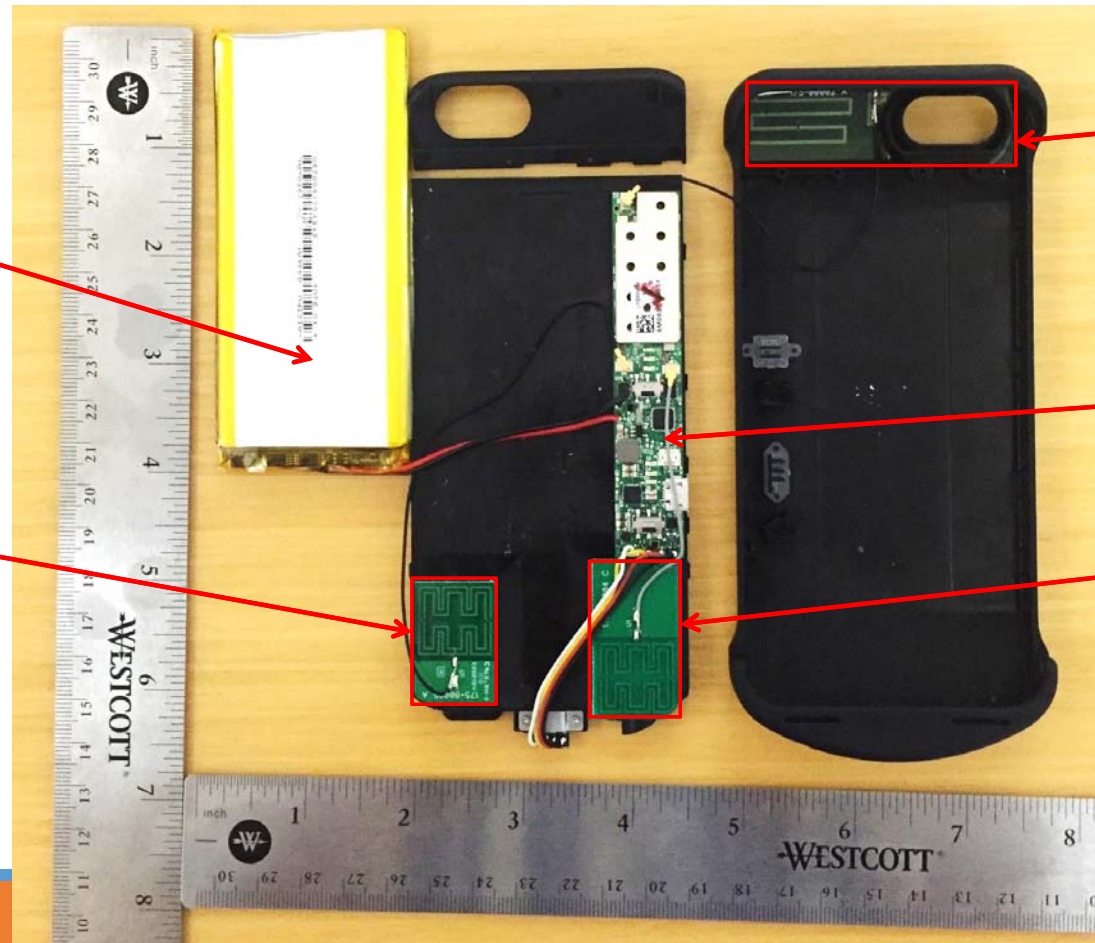
iPhone PRIMARY ANTENNA, which receives the signal from the probe antennas



# Internal of 2AFV8

The battery is separated from its original location to show the underneath, which is the plastic housing.

PROBE ANTENNA  
(High-band)



DONOR ANTENNA

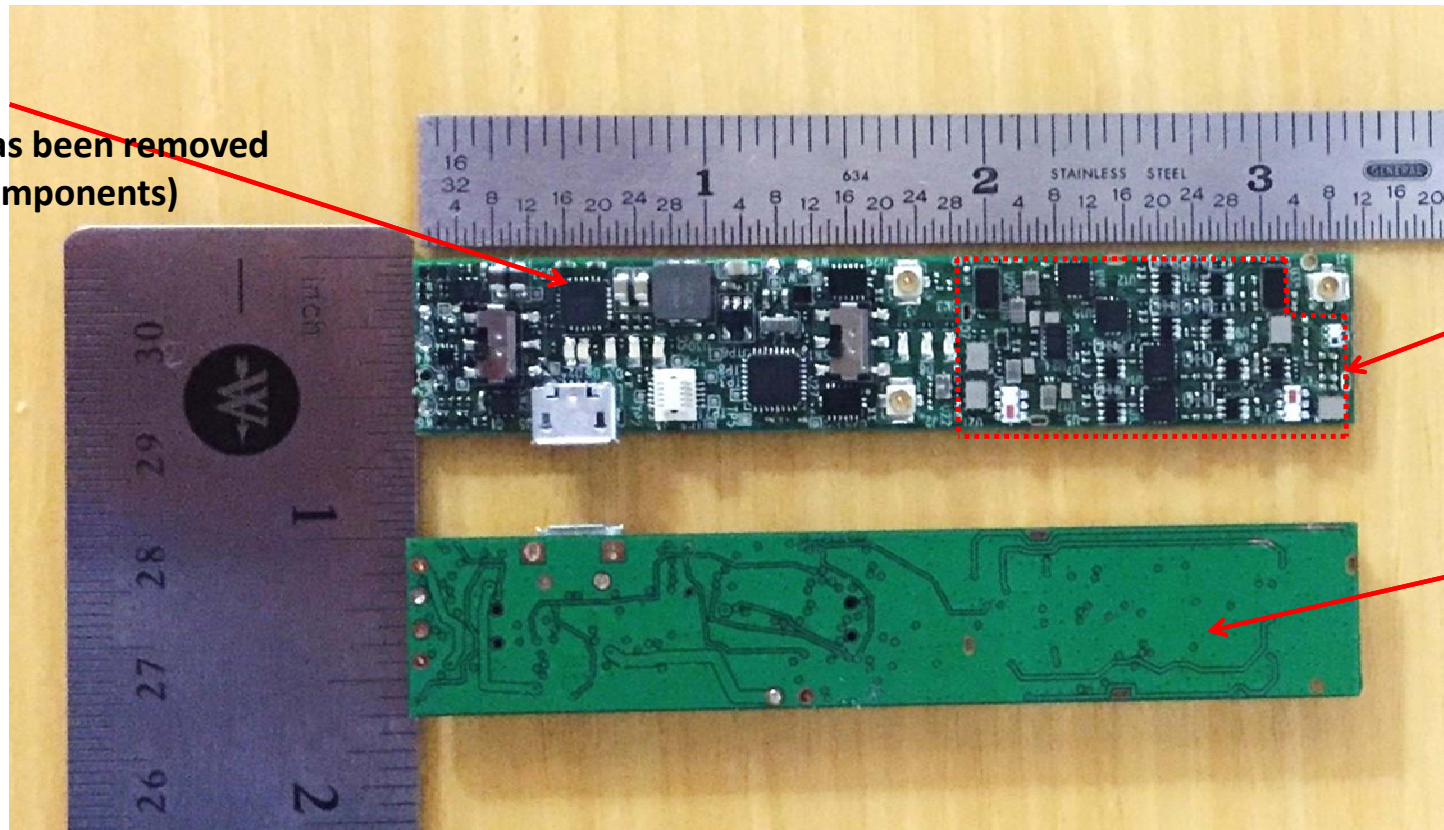
PCBA FRONTSIDE

PROBE ANTENNA  
(Low-band)

# PCBA (Front and Back)

## PCB FRONTSIDE

(The shield can has been removed to show whole components)



SHIELD CAN  
LOCATION

PCBA BACKSIDE