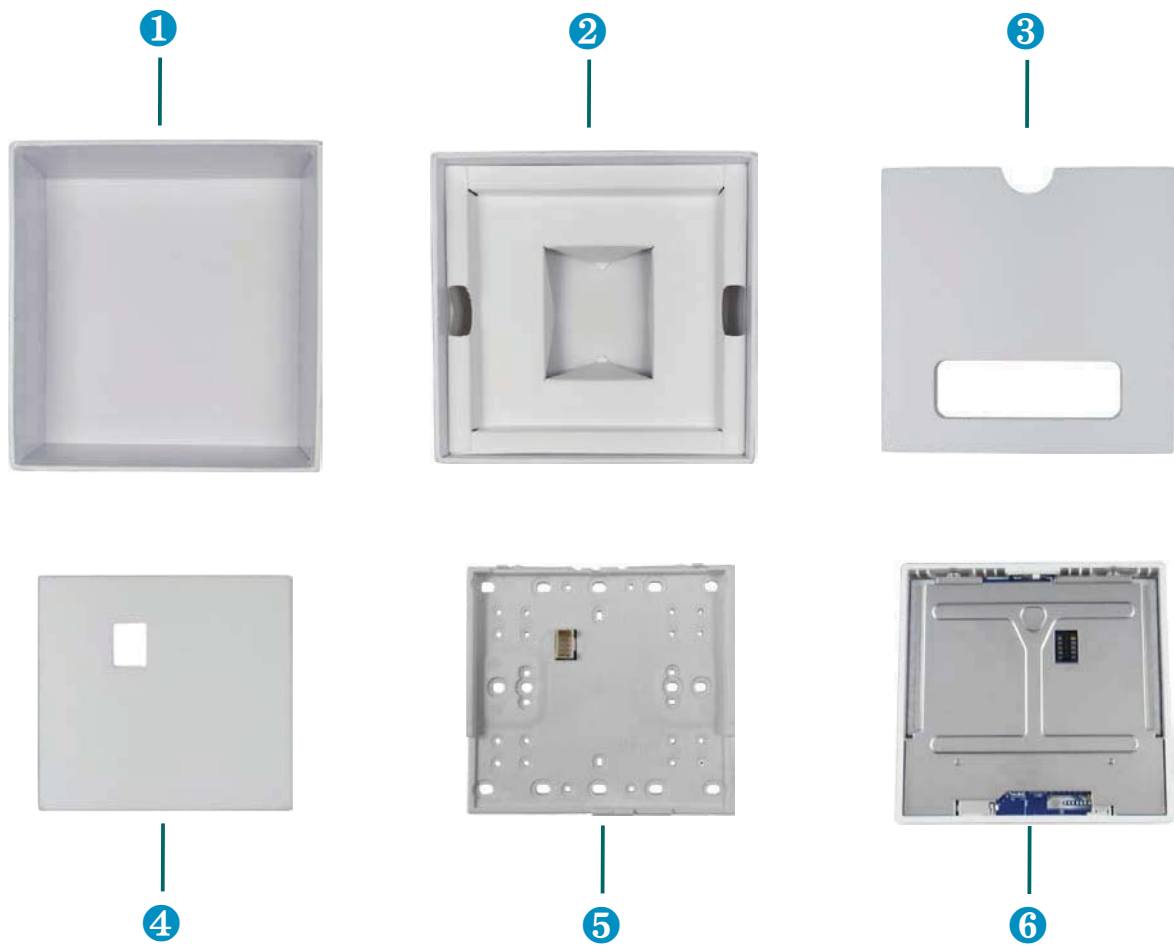


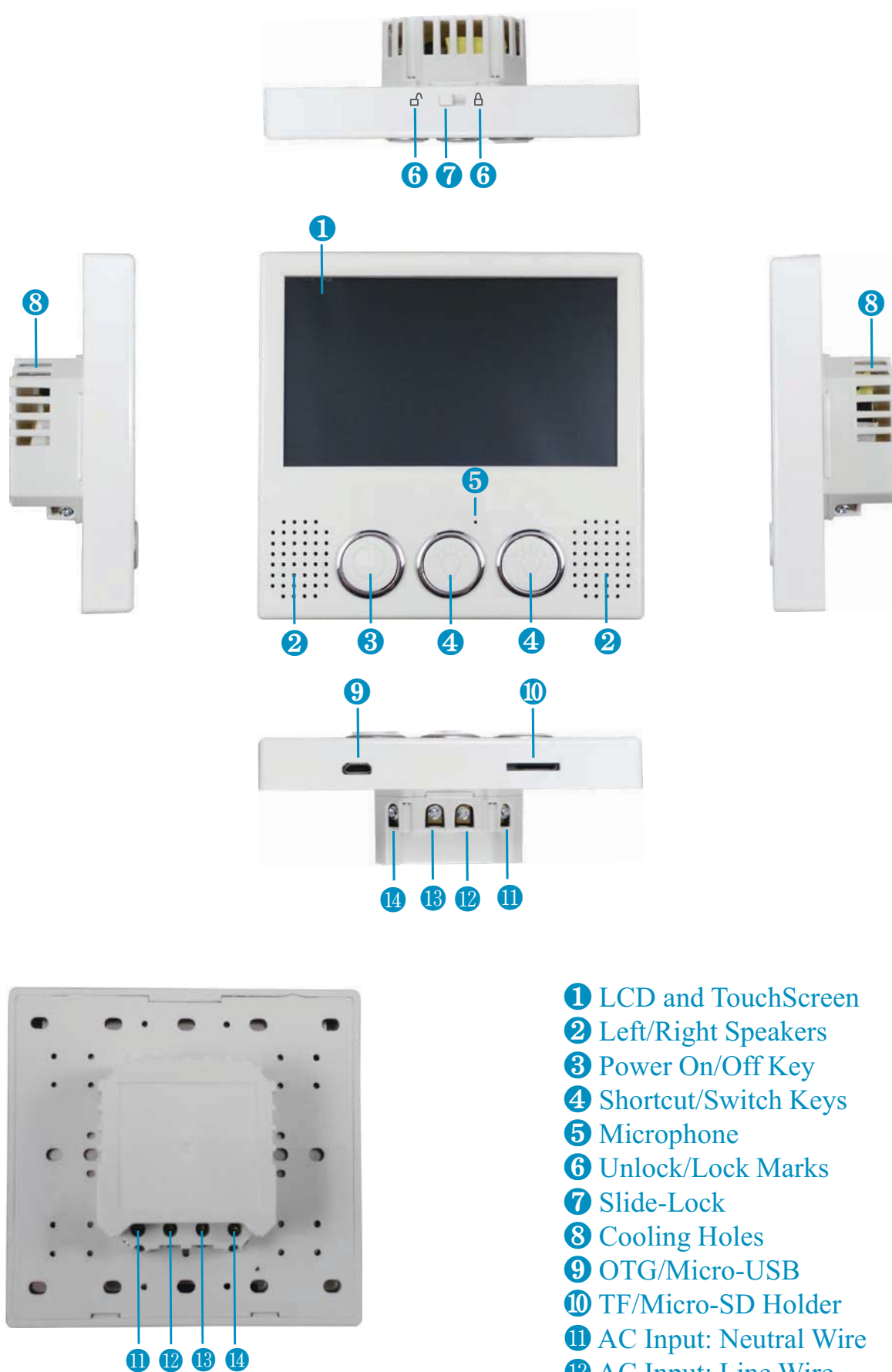
# 1 Open Package



- ① Gift Box Cover
- ② Gift Box Body
- ③ Up Foam for Transportation Protection
- ④ Middle Foam for Transportation Protection
- ⑤ The Base of the Device
- ⑥ The Panel of the Device

③④ Foams are for protection during transportation only  
and no long needed during device Installation

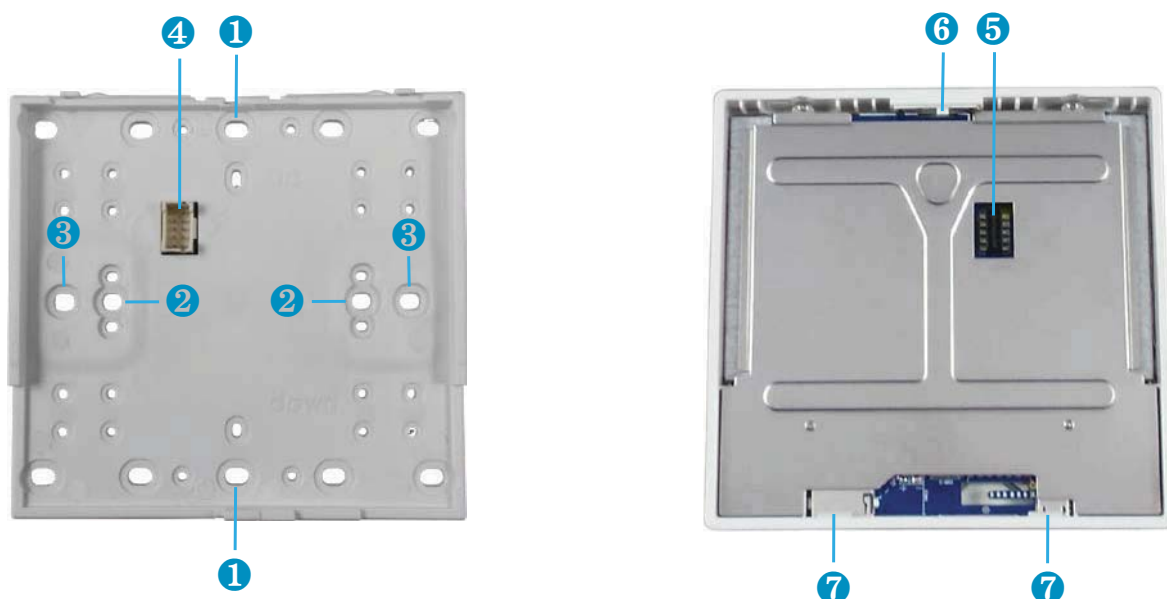
## 2 Your Device



- ① LCD and TouchScreen
- ② Left/Right Speakers
- ③ Power On/Off Key
- ④ Shortcut/Switch Keys
- ⑤ Microphone
- ⑥ Unlock/Lock Marks
- ⑦ Slide-Lock
- ⑧ Cooling Holes
- ⑨ OTG/Micro-USB
- ⑩ TF/Micro-SD Holder
- ⑪ AC Input: Neutral Wire
- ⑫ AC Input: Line Wire
- ⑬ Load/Light Line Wire #1
- ⑭ Load/Light Line Wire #2

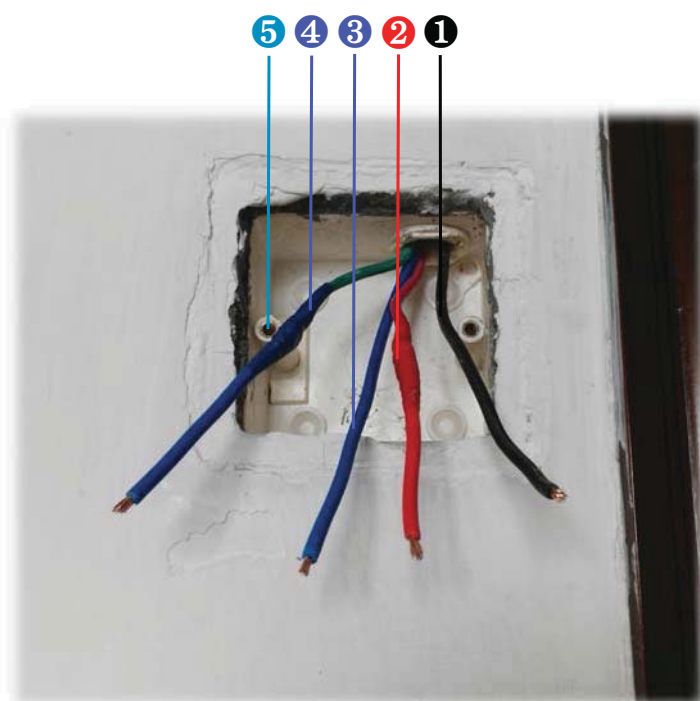
### 3 Installation

#### 1) Base and Panel



- ① Holes for NA Wall Junction Box (Pitch of Holes = 83mm)
- ② Holes for EU Wall Junction Box (Pitch of Holes = 60mm)
- ③ Holes for Other Wall Junction Box (Pitch of Holes = 83mm)
- ④⑤ Power/Signal Connector
- ⑥ 1 Slide-Lock on the top of the Panel
- ⑦ 2 Dead-Locks on the bottom of the Panel

#### 2) Wall Junction Box



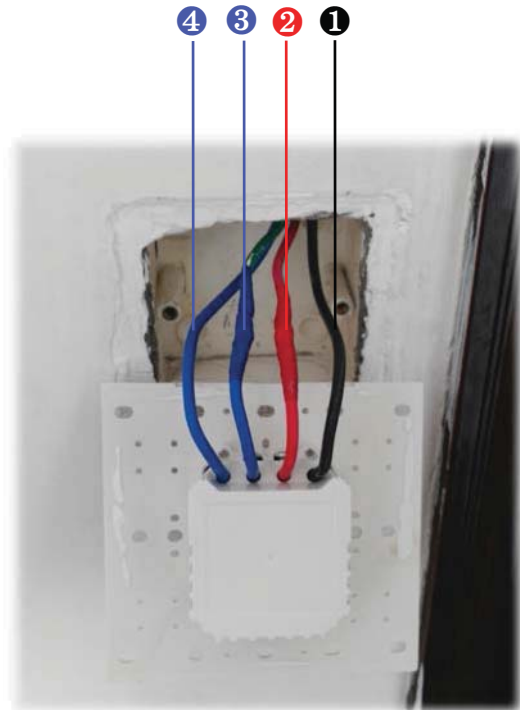
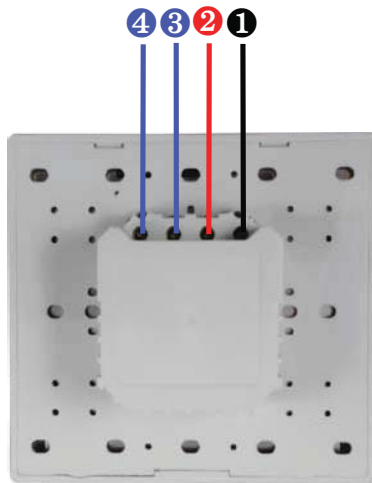
- ① Neutral Wire
- ② Line Wire
- ③④ Load/Light Line Wires
- ⑤ Screw Holes for Fixing the Base

### 3) Switch Off All AC Power Supply before Wiring



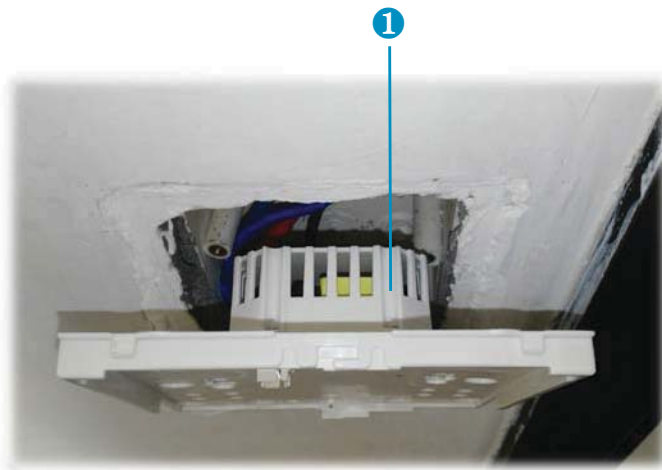
**①** Switch Off all AC Power Supply before Wiring

### 4) Wiring



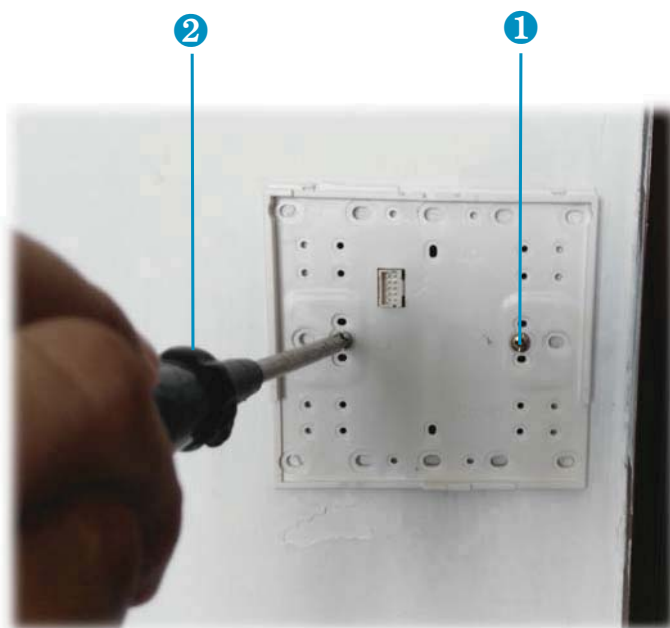
- ①** Neutral Wire
- ②** Line Wire
- ③④** Load/Light Line Wires

#### 5) Put the Base into Wall Junction Box



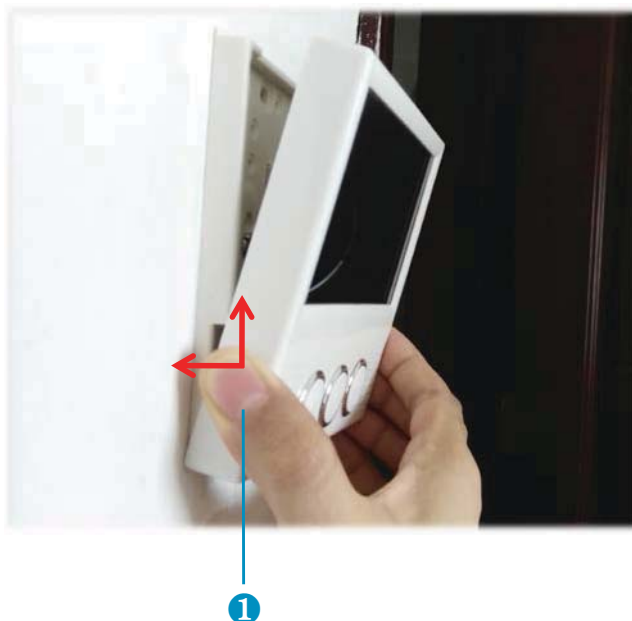
- ① Put the base into the wall junction box

#### 6) Fix the Base with the Wall Junction Box with 2 Screws



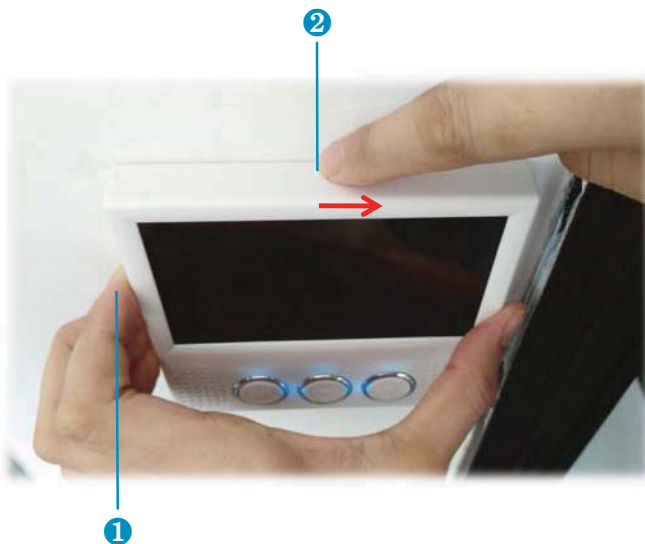
- ① 2 Screws Fixed with Wall Junction Box
- ② Screwdriver

#### 7) Lock the Lower Part of the Panel onto the Base



- ① Tilt a certain angle, push the panel forward and up to lock the lower part of the panel by dead-locks first

## 8) Lock the Upper Part of the Panel onto the Base



- ① Push the whole panel forward against the wall
- ② Move the Slide-Lock to the right with finger to lock the panel with the base

## 9) Check the Installation



- ①②③ When the Blue Led lights are on, the installation is done

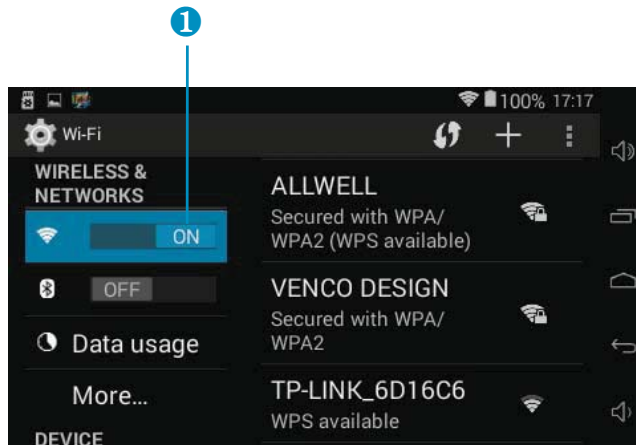
## 10) Power on the Device



- ① Press the Power-On/Off button to power on device

## 4 Wireless Control

### 1) Setup WIFI and Bluetooth



① Open WIFI, input the password of your WIFI access point and join your WLAN

### 2) Mutual Control

Any device can control others which are in the same WLAN by

- A. Installing third-party App.
- B. Installing KINGFEI App with free.

### 3) Controlled by SmartPhone

All devices can be controlled by either Android SmartPhone or APPLE IOS Smartphone by

- A. Installing third-party App from App Store.
- B. Installing KINGFEI App with free.

## 5 Trouble Shooting

TBD.

## 6 FCC Statement

This equipment has been tested and found to comply with the limits for a Class B digital device, pursuant to part 15 of FCC Rules. These limits are designed to provide reasonable protection against harmful interference in a residential installation. This equipment generates and can radiate radio frequency energy and, if not installed and used in accordance with the instructions, may cause harmful interference to radio communications. However, there is no guarantee that interference will not occur in a particular installation. If this equipment does cause harmful interference to radio or television reception, which can be determined by turning the equipment off and on, the user is encouraged to try to correct the interference by one or more of the following measures:

- Reorient or relocate the receiving antenna.
- Increase the separation between the equipment and receiver.
- Connect the equipment into an outlet on a circuit different from that to which the receiver is connected.
- Consult the dealer or an experienced radio/TV technician for help.

This device complies with Part 15 of FCC Rules. Operation is subject to the following two conditions: (1) This device may not cause harmful interference, and (2) This device must accept any interference received, including interference that may cause undesired operation.

Note: The manufacturer is not responsible for any radio or TV interference caused by unauthorized modifications to this equipment. Such modifications could void the user's authority to operate this equipment.

Any Changes or modifications not expressly approved by the party responsible for compliance could void the user's authority to operate the equipment.

The distance between user and products should be no less than 20cm