

## Wi-Fi USB Drive



### Quick Start Guide

#### 1. General Overview

##### USB3.0 interface:

Charging and data transfer interface

##### Power button:

Press the button to turn on it  
Press for 30S (when device is on) until the Wi-Fi LED flashes rapidly. Then release the button to restore factory setting.

##### Wi-Fi LED:

Shines steadily when the device is on

##### Power LED:

Flash while charging. Shine steadily when fully charged, flash rapidly indicate low power level

#### 2. Quick Start Guide

##### 1 App download and install



Scan the QR code to download and install "DM airdisk Pro"

You can also obtain the App by searching "DM airdisk Pro" in the application markets as below :

**Android users :** Google Play

**iOS users :** AppStore

##### 2 Power on the Wi-Fi USB Drive

Plug the Wi-Fi USB Drive to AC power adapter until the blue LED lights up to turn on Wi-Fi. A typical start-up can take up to 7 seconds.

##### 3 Connect to airdisk

1. Go to the "Setting" of the phone and turn on Wi-Fi.
2. Look for hotspot SSID "airdisk\_\*\*\*\*\*" from the Wi-Fi list and tap it.
3. Key in the initial password : **88888888** to connect , blue LED will blink during connection.
4. Check airdisk\_\*\*\*\*\* status as connected



##### 4 Operate DM airdisk Pro

Note :

1. If you haven't install DM airdisk App , you can visit <http://192.168.222.254> through your web browser.
2. Please refer to App user guide for App operation.

##### 5 USB Flash Drive Function

Connect the airdisk to PC USB port with USB cable , then you can send your files to airdisk. ( You will be not able to access the content of airdisk wirelessly when it is connected to a PC USB port )

#### 3. App User Guide

##### 3.1 Home page



**Setting menu :** Network connection and other setting items

**UDisk :** Enter to browse all types of files

**Upload :** Upload contents

##### 3.2 Phone backup

#### 4. Specifications

Wi-Fi protocol:IEEE802.11b/g/n  
Interface:USB3.0/Power button/  
Wi-Fi LED/Power LED  
Storage:16~128GB  
Battery:380mAh  
Dimension:79\*25\*13.5mm

#### 5. Cautions

1. Keep it away from high temperature.
2. Keep it dry. Water or other liquids will damage it.
3. Do not disassemble the equipment in any kinds of circumstances.
4. Keep it away from obstacles especially metal objects.

#### 6. Factory Reset

Load a random file named as "\$\$reset\$.bin" in the root directory of Wi-Fi USB Drive then plug the Wi-Fi USB drive to a power adapter. it will restore to factory settings automatically with Wi-Fi LED slow blinks indication. Resetting will not delete any content from the Wi-Fi USB Drive.

#### 7. FCC Declaration

Changes or modifications not expressly approved by the party responsible for compliance could void the user's authority to operate the equipment.

This equipment has been tested and found to comply with the limits for a Class B digital device, pursuant to Part 15 of the FCC Rules. These limits

are designed to provide reasonable protection against harmful interference in a residential installation. This equipment generates, uses and can radiate radio frequency energy and, if not installed and used in accordance with the instructions, may cause harmful interference to radio communications. However, there is no guarantee that interference will not occur in a particular installation.

If this equipment does cause harmful interference to radio or television reception, which can be determined by turning the equipment off and on, the user is encouraged to try to correct the interference by one or more of the following measures:

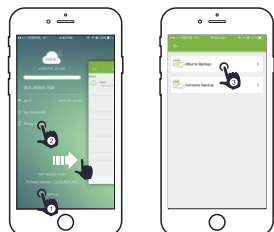
- Reorient or relocate the receiving antenna.
- Increase the separation between the equipment and receiver.
- Connect the equipment into an outlet on a circuit different from that to which the receiver is connected.

– Consult the dealer or an experienced radio/TV technician for help.

This device complies with Part 15 of the FCC Rules. Operation is subject to the following two conditions: (1) this device may not cause harmful interference, and (2) this device must accept any interference received, including interference that may cause undesired operation.

#### 8. Technical Support

Website: [www.dmsys.com/support](http://www.dmsys.com/support)  
Email: [support@dmsys.com](mailto:support@dmsys.com)



1. Tap the "Setting menu" to enter setting page
2. Tap the "Phone Backup" to enter "Albums backup" and "Contacts Backup"
3. Tap "Albums Backup" or "Contact Backup" and follow the instruction to backup target folders and contact list.