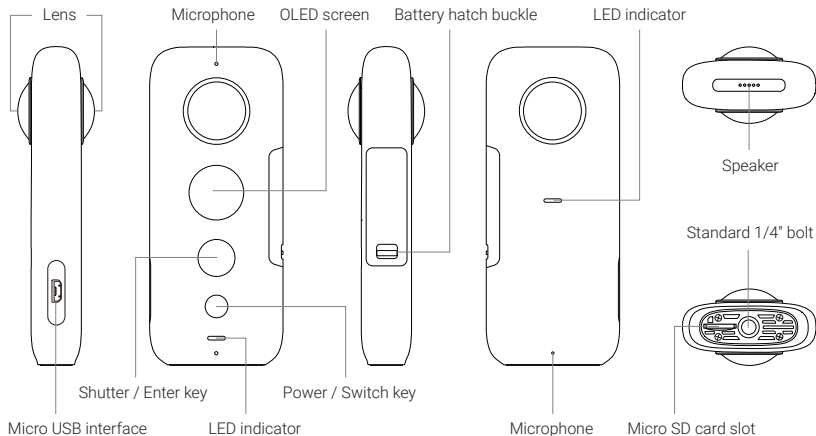


Insta360™ ONE X

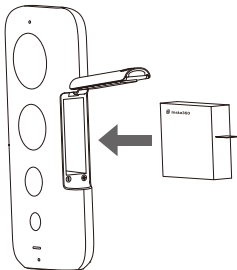
QUICK START GUIDE

Camera Overview



Preparation before Use

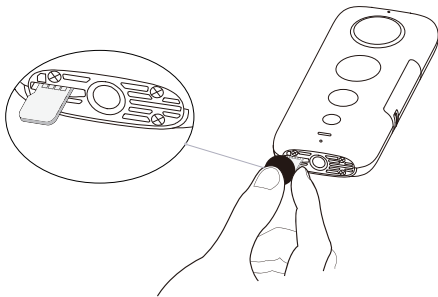
- 1** Before using the camera, please release the battery hatch buckle, open the battery hatch and insert the included lithium battery.



Note:

It is suggested to use the power adapter of 5V/2A to charge the camera. You can also use Insta360 ONE X's officially recommended charger (sold separately) to charge the camera.

- 2** Before using the camera, please insert an Micro SD card (sold separately).



Note:

- 1) This camera supports Micro SD card with UHS-3 or V30 (or above) format. As for the memory, up to 128GB can be supported.
- 2) For long time recording, a video will automatically be stored in several separate files.

Independent Use

■ Definition of keys

Key 1: Shutter / Enter key

Key 2: Power / Switch key

■ Basics

Power on + Power off

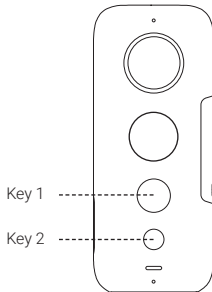
Press Key 2 to power on the camera; Press and hold Key 2 to power off the camera.

Take photos

When the camera is on, it is in the photo mode by default. Press Key 1 to take photos.


Shoot videos

When the camera is on, press Key 2 to switch the camera mode to video mode and then press Key 1 to start shooting videos. While shooting a video, press Key 1 to stop the recording.



* More features of the camera will be updated, and you can visit <https://www.insta360.com/r/onexdetail> .

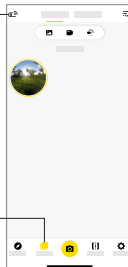
Wireless Connection

- 1 Press Key 1 (the smaller key) to power on the camera.
- 2 Scan the QR code as shown on the right or search "Insta360 ONE X" in App Store to download the companion app.
- 3 Having successfully installed the app, tap the wireless connection icon  on the top left corner of the **Album** page in the app. And then the prompt of "**Searching for camera**" will pop out. Select the camera and follow onscreen instructions to complete the connection.

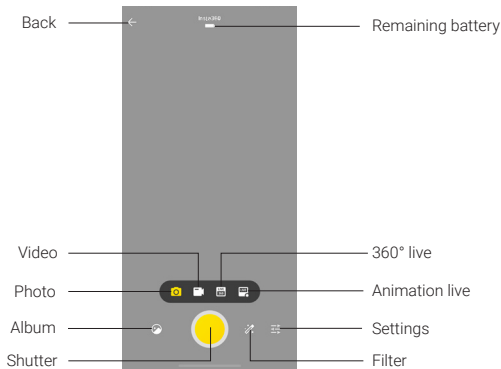


Wireless connection

Album



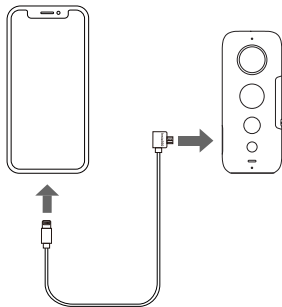
- 4** Having successfully connected to the camera, you can take photos or shoot videos via the app.



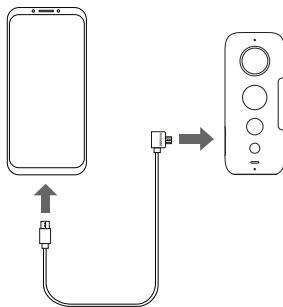
Note: Only when in wired connection, will the 360° live and animation live be enabled.

Wired Connection

We provide different connection cables according to different connecting interfaces. Once your phone is connected to the camera via the compatible cable, you can open the app and tap the **Shutter** button to take photos. With wired connection, you can also broadcast 360° live or animation live.



Connect to iPhone



Connect to Android smart phone

Bluetooth Wakeup

When you let your camera stay inactive for an extended long period, it will enter the standby mode. Press any key of the camera to exit the standby mode. You can also configure Bluetooth settings in the app to wake up the camera.

Notes

Please power off while not use to avoid any injury.

This device complies with part 15 of the FCC Rules.

Operation is subject to the following two conditions:

- (1) This device may not cause harmful interference, and
- (2) this device must accept any interference received, including interference that may cause undesired operation.

Any changers or modifications not expressly approved by the party responsible for compliance could void the user's authority to operate the equipment.

Note: This equipment has been tested and found to comply with the limits for a Class B digital device, pursuant to part 15 of the FCC Rules. These limits are designed to provide reasonable protection against harmful interference in a residential installation. This equipment generates uses and can radiate radio frequency energy and, if not installed and used in accordance with the instructions, may cause harmful interference to radio communications. However, there is no guarantee that interference will not occur in a particular installation.

If this equipment does cause harmful interference to radio or television reception, which can be determined by turning the equipment off and on, the user is encouraged to try to correct the interference by one or more of the following measures:

- Reorient or relocate the receiving antenna.
- Increase the separation between the equipment and receiver.
- Connect the equipment into an outlet on a circuit different from that to which the receiver is connected.
- Consult the dealer or an experienced radio/ TV technician for help.

5.15-5.25GHz Band

Operation in the 5.15-5.25GHz band is restricted to indoor use only.

Shenzhen Arashi Vision Company Limited

ADD: 6F, Building A, Logan Century Center, 23 Haixiu Road,
Bao'an District, Shenzhen, Guangdong, China

WEB: www.insta360.com

TEL: (+86) 400-833-4360

EMAIL: service@insta360.com

IO-XQS-CM.1

