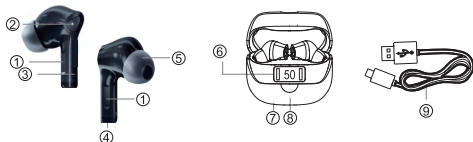




KTIXDEBUD2 / T730Q
True Wireless Earbuds

Product Diagram

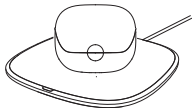


- ① Multi-function Touch area ② Earbuds Function Indicator LED
③ Microphone ④ Charging Pins ⑤ Ear tips
⑥ Digital Indicator of RH earbud/Battery case/LH earbud
⑦ LED Charging Indicator (Case) ⑧ USB Charging Port (Type-C)
⑨ Charging Cable (Type-C)

Charging

Fully charge both the earbuds and the charging case before the first use.

- Tear off the transparent sticker on the charging pin of the earbuds
- Use wireless charging or USB-C charging cable
- To prevent damage, use the provided usb-c cable
- Fully dry off the earbuds and the usb port before charging

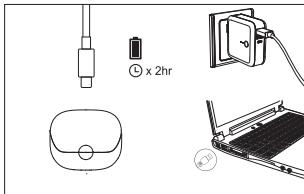


Option 1: Place the battery case on the wireless charging pad

Put the Charging Case into the wireless charger (not included) and it will be charged.

Charging Earbuds

Align the Charging Pins on the earbuds with those in the case, then place the earbuds into the case until it magnetically snaps into the Charging Slot.



Connect the Charging Case to a compatible adapter(not included) with the Type-c Cable, then plug the adapter into a socket.

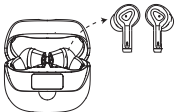
Option 2: Charge with USB-C cable

Wearing



1. Insert the earbuds into the inner canal of your ears.
2. Turn and find the most comfortable position.
3. Get a confident and satisfying fit in only 3 steps. For the best call quality, ensure the microphone is directed towards your mouth.

Powering On/Off



1. The earbuds will automatically power on when taken out of the charging case and power off when placed back into the charging case.
2. To manually power on, Long press and hold Multi-function button 3 seconds on either one of the earbuds.
3. To manually power off, long press and hold the multi-function button on either one of the earbuds for 10 seconds.

LED indicators (Earbuds)

Power on	White LED flashes quickly 5s, then turn to blue LED flashes slowly
Power off	Solid blue LED 6s then light off

Pairing

1. True Wireless Stereo Connection

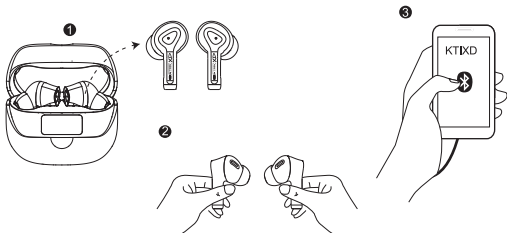
Taking the left earbud and right earbud out of the charging case together, the right earbud will automatically connect with the left earbud.

2. Bluetooth Device Connection

The earbuds will automatically enter pairing mode when powered on. Please make sure to open the device bluetooth mode, then you can connect earbuds by choosing 'KTIXDEBUD2' at bluetooth list of device.

3. Using Mono Earbud

Taking the **left** earbud or right earbud out of the charging case, after powering on, you can **also** connect the **left** earbud or right earbud by choosing 'KTIXDEBUD2' at **bluetooth** list of device. When you use mono earbud, take another earbud out of the charging case, they will automatically connect to stereo mode.



Paring mode	LED indicator on the main earbuds flashes blue quickly.
Connected Successfully	LED indicator on the earbuds pulse blue for every 8 seconds.

Note:

Remove the earbuds from the charging case at the same time (within 2 seconds), and the right ear will automatically connect to the left earphone.

Controls

- * Pinch the Multi-function area with two fingers.
- * ⌚ : hold the multi-fuction area





	Play/pause	x2 in quick	x2 in quick
	Next track	—	⏻x2* hold 2s
	Previous track	⏻x2* hold 2s	—
	Volume down	x1	—
	Volume up	—	x1
ANC- Ambient Mode		x3 in quick	x3 in quick
	Answer a call	x1	x1
	End a call	x2 in quick	x2 in quick
	Reject call	⏻x2* hold 2s	⏻x2* hold 2s

Reset

Reset the earbuds if the earbuds cannot connect with each other properly or cannot connect with your device properly.

1. Please turn the device **bluetooth** mode off or **delete** the connection record of the earbuds from the device **bluetooth list**.
2. Take the **left** earbud and **right** earbud out of the charging case together, then the earbuds will power on and enter pairing mode.
3. Touch the **left** or **right** earbud 5 times to enter pairing mode again.
4. After resetting the earbuds, the pairing record of the earbuds will **all clear** and you can re-pair **bluetooth** with the device.

Specifications

Input	5V \pm 0.5A	
Battery Capacity	Earbuds:35mAh	Charging Case: 400mAh
Charging time	Earbuds: 1.5 hrs	Charging Case: 2 hrs
Playtime		
(Varies by volume level and content)	7hrs+20hrs(with charging case)	
Driver size	13mm x 2	
Frequency response	20Hz-20kHz	
Impedance	32 Ω + 15%	
Bluetooth version	V5.3	
Audio code format	SBC, AAC	
Bluetooth range	10m/33ft	

Caution

Only certified technicians are **qualified** to repair your device. **In calling** upon non-qualified persons to repair your product, you run the risk of damaging your device and voiding your warranty.

Only use the accessories that are certified by manufacturer. The use of incompatible accessories with the device, such as batteries and charger, can cause injury or damage your device.

Disposal and recycling



Correct disposal of the product.

This product contains substances that are potentially dangerous to the environment and to human health. Therefore, you should hand it over to the applicable collection point for the recycling.



Correct disposal of the batteries.

If your product contains a detachable battery pack, you should only dispose it in a designated collection point for used batteries.



WARNING: Cancer and Reproductive Harm-www.P65Warnings.ca.gov

Battery and charger caution

This device is equipped with a Lithium-ion or Lithium-ion polymer battery.

Risk of explosion if battery is replaced by an incorrect type.

- Do not pierce, open, disassemble the battery, or use it in a humid and / or corrosive environment. If there is a battery leak, do not let liquid touch skin or eyes. If this happens, immediately flush the affected areas with water or ask for medical help.
- Do not expose the battery to temperatures over 45C (113F).
- Do not dispose of batteries in a fire as they may explode. Obey local regulations. Recycle when possible.
- Be careful to never crush or perforate the battery. Avoid exposing the battery to high external pressure which could provoke an internal short-circuit and overheating.

Avoiding hearing damage.

To prevent possible hearing damage, do not listen at high volume levels for long periods.

FCC Statement

This device complies with Part 15 of the FCC Rules. Operation is subject to the following two conditions:

- (1) This device may not cause harmful interference.
- (2) This device must accept any interference received, including interference that may cause undesired operation.

Changes or modifications not expressly approved by the party responsible for compliance could void the user's authority to operate the equipment.

Note:

This equipment has been tested and found to comply with the limits for a class B digital device, pursuant to Part 15 of the FCC Rules. These limits are designed to provide reasonable protection against harmful interference in a residential installation.

This equipment has been tested and found to comply with the limits for a Class B digital device, pursuant to part 15 of the FCC Rules. These limits are designed to provide reasonable protection against harmful interference in a residential installation. This equipment generates, uses and can radiate radio frequency energy and, if not installed and used in accordance with the instructions, may cause harmful interference to radio communications. However, there is no guarantee that interference will not occur in a particular installation. If this equipment does cause harmful interference to radio or television reception, which can be determined by turning the equipment off and on, the user is encouraged to try to correct the interference by one or more of the following measures:

- Reorient or relocate the receiving antenna.
- Increase the separation between the equipment and receiver.
- Connect the equipment into an outlet on a circuit different from that to which the receiver is connected.
- Consult the dealer or an experienced radio/TV technician for help.

FCC Statement

The device has been evaluated to meet general RF exposure requirement.
The device can be used in portable exposure condition without restriction



MADE IN CHINA

