



Getting Started with Selfie

Mobile skin diagnosis system



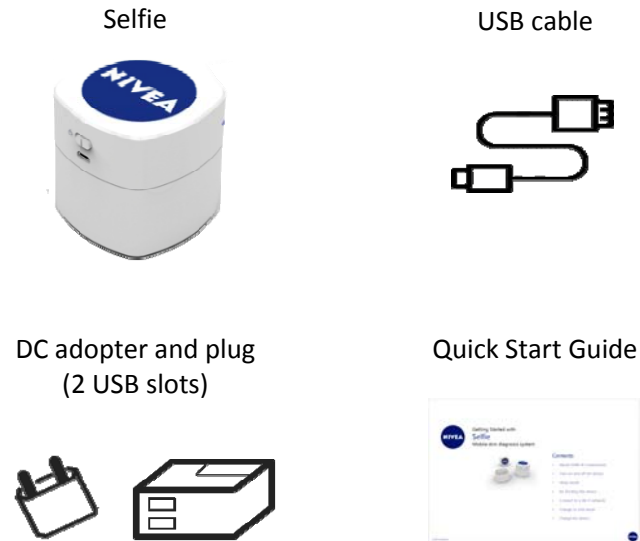
Contents

- About Selfie & Components
- Turn on and off the device
- Sleep mode
- Re-booting the device
- Connect to a Wi-Fi network
- Change to USB mode
- Charge the device

About Selfie



Components



Turn on and off the device

1. Push the power button to left. After 3 seconds, green LED blinks on.
2. Green LED is kept on when the device is ready to connect with your host device.
3. After turning on, the LED displays the remaining battery amount.



Battery	LED color
70~100	Blue
35~70	Violet
5~35	Red
0~5	Red (blinking)

Sleep mode

1. The device goes to sleep mode after 10 minutes without using the device.
(No LED displayed)



2. Turn the device over to wake up from sleep mode.



3. The green LED blinks on.

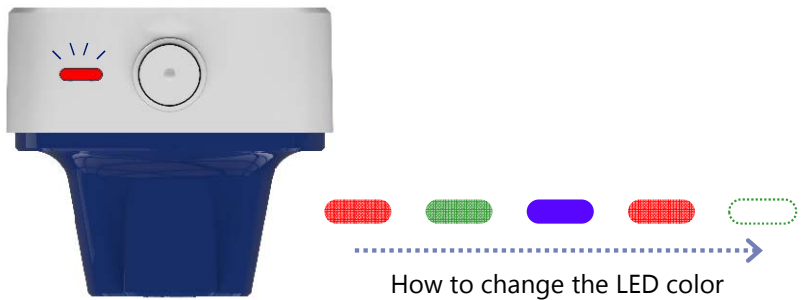


Re-booting the device

1. Press the camera button for 7 seconds.



2. The LED blinks on Red → Green → Blue → Red.
And then, the green LED blinks on again.



3. After turning on, the LED displays the remaining battery amount.

Battery	LED color	
70~100	Blue	
35~70	Violet	
5~35	Red	
0~5	Red (blinking)	

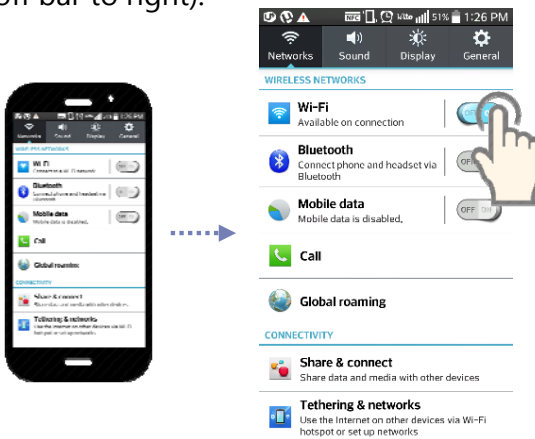
* The Wi-Fi is connected automatically after re-booting the device.

Connect to a Wi-Fi network

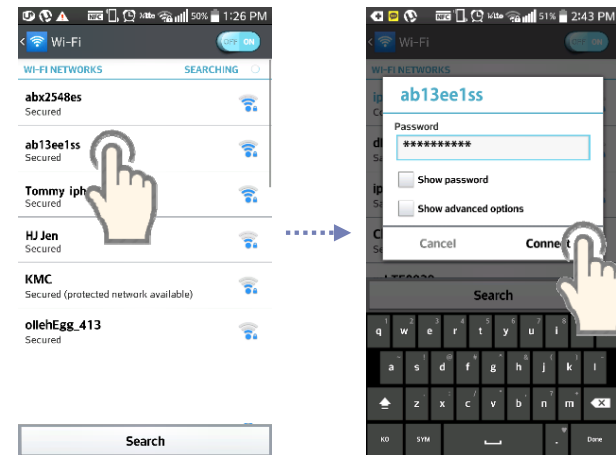
1. Check the SSID of the device written on the serial label.



2. On the Wall paper of your host device, Apps → Settings → Wi-Fi. Turn on the Wi-Fi (Drag the on/off bar to right).



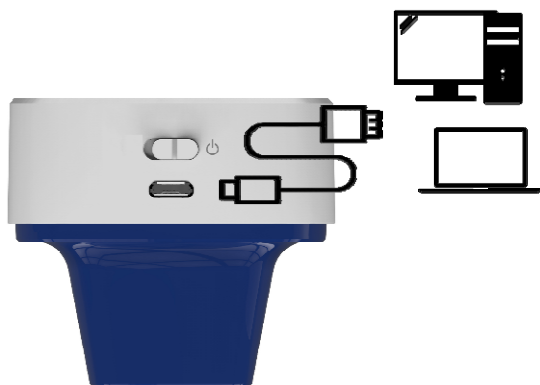
3. Select the SSID from the Wi-Fi networks list. Enter a password if any, and tap Connect.



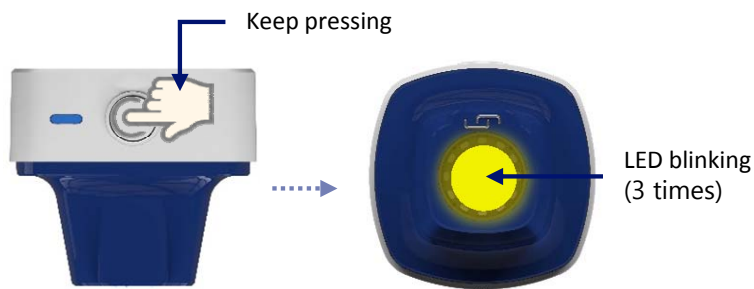
Change to USB mode

* Default: Wi-Fi mode.

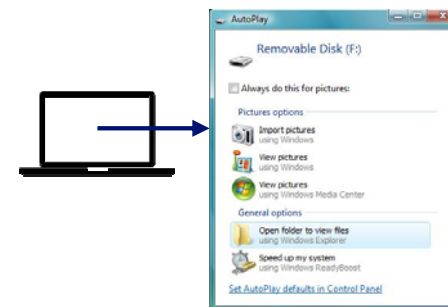
1. Turn off the device, and connect to your PC (or tablet) by USB cable.



2. Press the camera button and turn on the device. Keep pressing the camera button until the blue LED of optic blinks on three times.



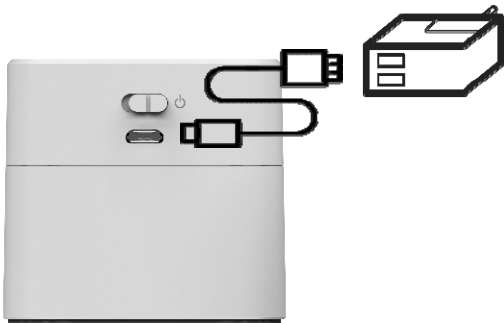
3. The LED is changed to blue, and the device is recognized as a removable disk in your PC (or tablet).



* In case using USB hub, recommend to use the additional power of USB hub..

Charge the device

1. Connect the device to power adopter by USB cable.



2. While charging the device, the blue LED blinks on.



3. The blue LED is on when charging is completed.

* Only use the chargers, batteries, and cables approved by the supplier. Unapproved adaptors or cables can cause the battery to explode or damage the device.

SPECIFICATIONS

Operating system	Android 4.0 (ICS)
Dual Camera	Device: 5M Pixel CMOS Diagnostic: 5M Pixel / Optical zoom
Sensor	Hydration sensor
Connectivity	Wi-Fi (IEEE 802.11 b/g/n) USB 2.0
Weight	Approx 150g
Dimension	158x70x16.5 mm
Display	4.5" 1280x720 HD Multi-touch LCD
CPU	1.4GHz Quad-core(ARM Cortex-A9)

Memory	Flash: 16GB Emmc 4.51 RAM: 1GB LPDDR2
Internal Storage	14GB
External memory support	MicroSD (Optional)
Battery	Rechargeable Li-Polymer 2,000mAh
Multi-LED	White LED, Polarized White LED, UV LED
Multimedia Capable	H.263/H.264, MPEG-4

FCC Information to User

This equipment has been tested and found to comply with the limits for a Class B digital device, pursuant to Part 15 of the FCC Rules. These limits are designed to provide reasonable protection against harmful interference in a residential installation. This equipment generates, uses and can radiate radio frequency energy and, if not installed and used in accordance with the instructions, may cause harmful interference to radio communications. However, there is no guarantee that interference will not occur in a particular installation. If this equipment does cause harmful interference to radio or television reception, which can be determined by turning the equipment off and on, the user is encouraged to try to correct the interference by one of the following measures:

- Reorient or relocate the receiving antenna.
- Increase the separation between the equipment and receiver.
- Connect the equipment into an outlet on a circuit different from that to which the receiver is connected.
- Consult the dealer or an experienced radio/TV technician for help.

Caution

Modifications not expressly approved by the party responsible for compliance could void the user's authority to operate the equipment.

FCC Compliance Information : This device complies with Part 15 of the FCC Rules. Operation is subject to the following two conditions: (1) This device may not cause harmful interference, and (2) this device must accept any interference received, including interference that may cause undesired operation

“A DCFH5BHBCH9”

: 77 F: “FUXJHjcb ‘9 dcl fY’ GUHYa Ybh”

HjgYei Jda YbhWda d’Ygk Jh’: 77 fUXJHjcb Yl dcl fY’ Ja Jhg gYhZfH: Zf’ Ub i bWbHfc “YX Ybj JfCba Ybh”

HjgYei Jda Ybhgci ‘X VY’ JbgU YX UbX cdYUHX k Jh’a JbJa i a ‘XJgUbW’ %’ Vh VYk YYb HAY fUXJHcf / ‘nci fVcXnt’”

Hjg fUbgg JHYf a i ghbcHY Vei cWVHX’ cf cdYUHB[‘Jb Veb† bWjcb k Jh’ Ubmch Yf UbHYbbU cf fUbgg JHYf”

