



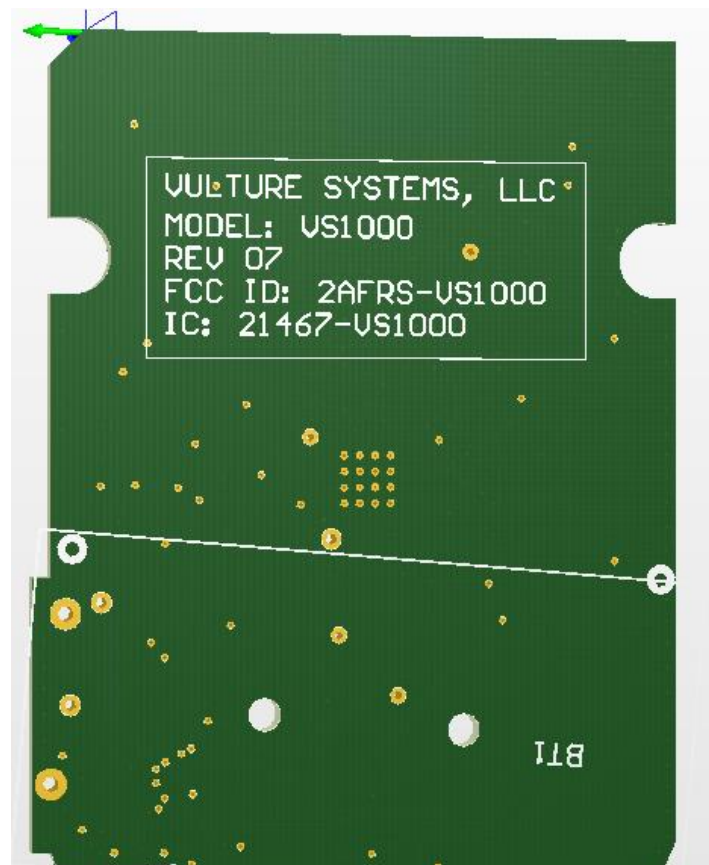
---

VultureNet: Long Range System

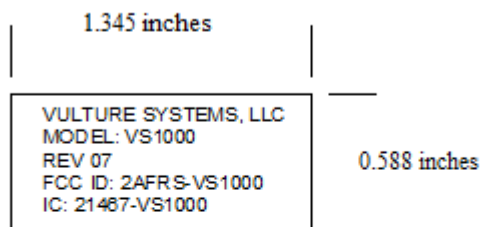
---

## VS1000 LABEL LOCATION

The VS1000 label location is on the backside of the circuit board in the circuit board's silkscreen. Before use the user must put batteries in the battery holder and this statement will be the only other thing visible to the user when applying batteries.



## VS1000 LABEL INFORMATION



TEXT WIDTH= 10 mils

TEXT HEIGHT= 60 mils

TEXT ON WHITE SILKSCREEN OF PCB