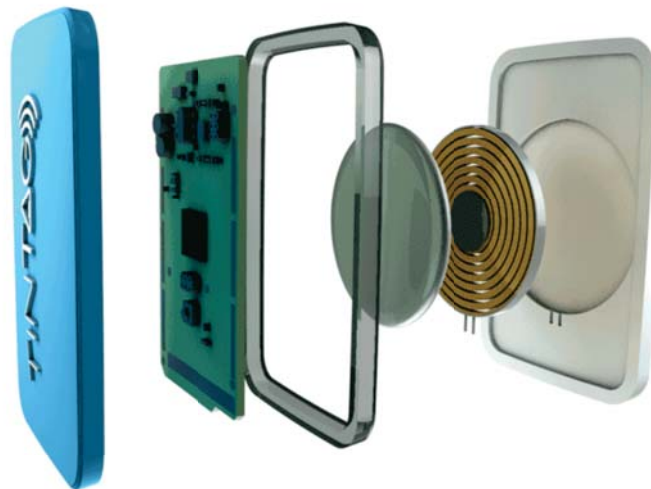


Tintag



Rechargeable Tracking Device

Contents

1. What it does	1
2. The Device	2
3. Getting Started	3
4. Operation	8
5. Charger	9
6. Precautions	10

List of Figures

1	The TinTag Device and the Recharging Module	2
2	TinTag LEDs and Button	2
3	Downloading the Mobile App	3
4	Launcingh Tintag Application	3
5	Proceeding to Adding Tintags to Your Mobile App	4
6	Adding Name and Photo to Tintag	4
7	Selecting one Tintag in the Mobile App (Picture showing app and corresponding Tintag)	5
8	Selecting the Desired Tintag in your list	5
9	Find Your Tintag via Buzzer	6
10	Find Your Tintag via LEDs	6
11	Monitor Distance from Tintag	7
12	Map of Last Tintag Locations	7
13	Button on Tintag	8
14	Disconnect from Tintag	8
15	The Tintag Placed on the Recharging Module	9

1. What it does

Tintag is a rechargeable tracking device for your lost items. It helps you find your keys, bags, pets, you name it, so that you never lose them again. TinTag connects via Bluetooth to an app running on your phone. The state of the art technology, coupled with its original design, including a high-performance communication unit and antenna design lead to a range of up to 50 meters (detection from 100 meters and connection from 50). Furthermore, the wireless charging unit in the package and the high-capacity rechargeable battery eliminate the need for the upsetting action of replacing batteries.

Basic TinTag functionalities:

- helps you find the objects to which it is attached and which you've lost through a phone application;
- alerts you through a selectable buzzer or flash of a LED when the object it is attached to gets further than a distance limit you specify in the mobile application;
- helps you find phone running the application through an acoustic notification when pressing a button on the device;
- allows the monitoring of an unlimited number of devices through the same application;
- saves the history of locations where the item was last seen;
- application running on Android and iOS;
- durable waterproof casing available in several colours;
- small and discrete, easy to attach to tracked items (26mm x 39.2 mm).

Supported devices:

- iPhone 4S, 5, 5s, 5c, 6, 6 Plus
- iPad 3rd Generation and later
- iPad Mini and later
 - all with iOS 7 and upwards
- Android phones with Android 4.3 and upwards, with Bluetooth Low Energy
 - Samsung Galaxy S3, S4, Note 3, Google Nexus 4, 5 and many more...

2. The Device



Figure 1: The TinTag Device and the Recharging Module

The TinTag functionalities are achieved through the use of four LEDs, a buzzer, and one button.



Figure 2: TinTag LEDs and Button

3. Getting Started

This section introduces the steps required for operating a device.

Step 1. Download Mobile Application

Download the appropriate application depending on your phone, Android-based or iPhone, from App Store or Google Play.



Figure 3: Downloading the Mobile App

Step 2. Launch the TinTag App

Tap the TinTag icon on your phone to launch application.



Figure 4: Launching TinTag Application

Step 3. Add a New Tintag

Swipe Down to add a new Tintag for connecting to the phone app.



Figure 5: Proceeding to Adding Tintags to Your Mobile App

Step 4. Add a Name and Photo to Your Tintag

When starting the application, you will be asked to add a name and a picture for the Tintag you will connect to.

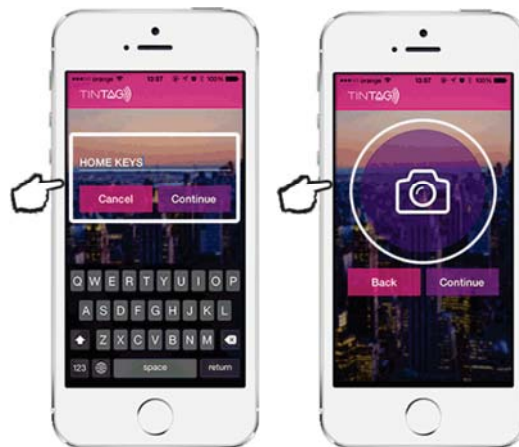


Figure 6: Adding Name and Photo to Tintag

Step 5. Detect Your Tintag

Wait until all the Tintags in the vicinity are detected and select one of them. You will note that the colour of the icons is different for the devices, being the same as the casing of each one of them. When selected in the phone app, the corresponding Tintag will start the buzzer and will flash the LEDs for a short period of time, so that you know which one is it.



Figure 7: Selecting one Tintag in the Mobile App (Picture showing app and corresponding Tintag)

Step 6. Select Your Tintag from the Added Devices List

Select the Tintag you want to connect depending on a name and photo in the list showing all the added devices.



Figure 8: Selecting the Desired Tintag in your list

Step 7. Find Your Tintag via Buzzer

When the Tintag is in range and connected, you can start a buzzer alert from the mobile app. If the phone is out of Tintag's range, then the buzzer button is not visible, meaning that the devices are disconnected.



Figure 9: Find Your Tintag via Buzzer

Step 8. Find Your Tintag via LEDs

When the Tintag is in range and connected, you can flash the LEDs from the mobile app so that you can find it. If the phone is out of Tintag's range, then the LED button is not visible, meaning that the devices are disconnected.



Figure 10: Find Your Tintag via LEDs

Step 9. Alert Depending on Distance

This feature in the app enables you to monitor a Tintagged item within a preferred distance and to be notified when it gets further than the limits you set.



Figure 11: Monitor Distance from Tintag



Information

The preferred distance for alerting can be set to be one meter, more than 5 to 10 meters, more than 10 to 20 or more than 20 to 30 meters.

Step 10. History of Tintag Locations

The application keeps track of the locations where your item to which it is attached was last seen so that you can easily remember where you've left it. You can also cycle through all the locations where the Tintag was detected.



Figure 12: Map of Last Tintag Locations



Step 11. Find Your Phone Using a Connected Tintag

If you have lost your phone, and it is in range of an associated Tintag you can start an acoustic notification on your phone by pressing the button on the device. You can walk around the locations where your phone running the application might be. If you are getting close to it, as you press the button, it will signal its presence through the sound alarm.



Figure 13: Button on Tintag

Step 12. Leaving Tintag Detail Area

You can leave the detail area of a Tintag you are connected to by tapping the x on the upper left corner of the window. This way you can easily go through all the Tintags associated to your phone.



Figure 14: Disconnect from Tintag

4. Operation

The Tintag is ready to go when you get it out of its package. You will be able to connect to it as soon as you install the mobile app. When first connecting to it, it will flash the four LEDs in the corners and it will start the buzzer for a short period of time. This is particularly useful when you have multiple Tintags you want to connect to. After adding it in the mobile app, it will always connect to the mobile application if within range. When the devices are out of reach, they will automatically disconnect. However, when within range, they will automatically reconnect.

You will be able to flash the LEDs and start the buzzer from your application only if the Tintag is within range and connected. This is also the case of the Tintag button, it will start the alert on the phone only if the application is running and the devices are connected.



Warning

The mobile app continuously displays the battery level so you will know each time the battery needs recharging. The Tintag needs battery recharging when the battery level is shown to be 0%.



Attention!

The operating temperature range lies between -20°C and 60°C.

5. Charger



Warning

When your mobile application shows a battery level of 0% the battery needs recharging. Be careful, the Tintag will keep operating only for a limited amount of time if you don't recharge the battery.

The Tintag can be placed in any position on the home base charger, with the logo facing upwards. When placed on the charger and when initiating the charging procedure, all the four LEDs in the corners will flash for a short period of time. Then, the LED in the lower-right will toggle slowly during the charging period. During all this time you can monitor the battery level from your mobile app. When the battery is full, a green LED will also toggle, to inform you that you can replace the Tintag from the home base charger. The home base charger can be connected to any USB port of a device.



Figure 15: The Tintag Placed on the Recharging Module



Information

The lower-right LED on your Tintag will signal that charging is taking place and a green LED will let you know the battery is fully charged.



Warning

Do not place any other device than the Tintag on the home base charger. This can damage the charger itself or these objects.

6. Precautions

The Tintag is a tough device and will withstand a great deal of bad treatment. However, you must remember that the casing is made of plastic and it is not indestructible. Below is a list of precautions you should take into account.



Warning

Place the Tintag carefully in the charger. Make sure that there are no objects between the two.

Do not place the Tintag close to open fire and do not dispose in fire.

This is an electronic device, so a degradation of communication capabilities is expected when operating in harsh environments, where interferences are present.

When you notice unexpected behaviour of the mobile app, you should restart it.

Keep in mind the fact that the connection to your Tintag can be established only if it is within the range of your mobile phone.



Note:

This equipment has been tested and found to comply with the limits for a Class B digital device, pursuant to Part 15 of the FCC Rules. These limits are designed to provide reasonable protection against harmful interference in a residential installation. This equipment generates, uses, and can radiate radio frequency energy, and if not installed and used in accordance with the instructions, may cause harmful interference to radio communications. However, there is no guarantee that interference will not occur in a particular installation. If this equipment does cause harmful interference to radio or television reception, which can be determined by turning the equipment off and on, the user is encouraged to try to correct the interference by one or more of the following measures:

- Reorient or relocate the receiving antenna.
- Increase the separation between the equipment and receiver.
- Connect the equipment into an outlet on a circuit different from that to which the receiver is connected.
- Consult the dealer or an experienced radio/TV technician for help.

You are cautioned that changes or modifications not expressly approved by the party responsible for compliance could void your authority to operate the equipment.

This device complies with Part 15 of the FCC Rules. Operation is subject to the following two conditions:

- (1) this device may not cause harmful interference, and
- (2) this device must accept any interference received, including interference that may cause undesired operation.

This device complies with Industry Canada's licence-exempt RSSs. Operation is subject to the following two conditions:

- (1) This device may not cause interference; and
- (2) This device must accept any interference, including interference that may cause undesired operation of the device.