

Warranty

eGeetouch® smart lock is warranted to the original purchaser to be free from defects in workmanship and material. JSB Tech Pte Ltd, will, at its option, repair or replace any defective part which may malfunction under normal and proper use within a warranty period of 1 (one) year from the date of purchase. This one year warranty clause is NOT applicable to European Union (EU) member states. Purchases made in EU member states will be covered by the existing consumer laws across the European Union, which provide statutory warranty rights in addition to the coverage of one year warranty period. The foregoing warranty shall not apply to defects resulting from misuse, abuse or transfer by the Buyer, Buyer-supplied software or interfacing, unauthorized modification or operation outside of environmental specifications for the product. JSB Tech Pte Ltd does not warrant that the operation of the instrument software, or firmware, will be uninterrupted or error free.

The exclusive remedy under any and all warranties and guarantees, expressed herein, and we shall not be liable for damages from loss or delay of equipment uses, consequential, or incidental damage. No other warranty is expressed or implied. JSB Tech Pte Ltd specifically disclaims the implied warranties of merchantability and fitness for a particular purpose.

Limitation of Liability

In no event shall DIGIPAS TECHNOLOGIES INC., (hereinafter, "the Company") be liable to you or any third party for any indirect, special, incidental, exemplary or consequential damages of any kind resulting from any breach of warranty or from the performance or use of the product. This includes without limitation: property damage, loss of value of the product or any third party products that are used with the product, or loss of use of the product or any third party products that are used with the product, even if the Company has been advised of the possibility of such loss or damages. The Company's total cumulative liability arising from or related to the product, whether in contract, tort (including negligence) or otherwise, shall not exceed the amount actually paid by you for the product. Some states and/or jurisdictions do not allow the exclusion or limitation of incidental or consequential damages, so the above limitations or exclusions may not apply to you. If any limitation of liability shall be deemed invalid by any applicable law, then the limitations of liability set forth above shall apply to the maximum extent permitted under applicable law.

FCC Statement

This device complies with part 15 of the FCC Rules. Operation is subject to the following two conditions: (1) This device may not cause harmful interference, and (2) this device must accept any interference received, including interference that may cause undesired operation.

Note: This equipment has been tested and found to comply with the limits for a Class B digital device, pursuant to part 15 of the FCC Rules. These limits are designed to provide reasonable protection against harmful interference in a residential installation. This equipment generates, uses and can radiate radio frequency energy and, if not installed and used in accordance with the instructions, may cause harmful interference to radio communications. However, there is no guarantee that interference will not occur in a particular installation. If this equipment does cause harmful interference to radio or television reception, which can be determined by turning the equipment off and on, the user is encouraged to try to correct the interference by one or more of the following measures:

- Reorient or relocate the receiving antenna.
- Increase the separation between the equipment and receiver.
- Connect the equipment into an outlet on a circuit different from that to which the receiver is connected.
- Consult the dealer or an experienced radio/TV technician for help.

Caution: Any changes or modifications not expressly approved by the party responsible for compliance to this equipment would void the user's authority to operate this device.

eGeetouch®

SMART LOCK QUICK START GUIDE



U.S. Pat. No.:
US 9,121,199 B2 & D 721,261 S

Model GTX000 Series

This Quick Start Guide contains only the basic & essential information in consideration of the environment. A complete guide is available online in softcopy at www.egeetouch.com/support

Support

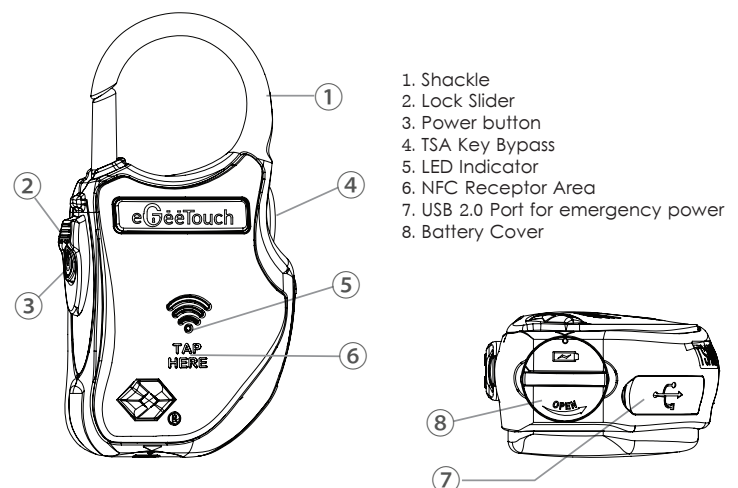
You can find a complete Troubleshooting Guide, Demo Videos & FAQ online at www.egeetouch.com/support.

Distribute by:

Manufactured by : JSB TECH Pte Ltd

eGeetouch®

Product overview



Technical Specification

Travel Padlock's Length	: 35mm
Travel Padlock's Width	: 22mm
Travel Padlock's Height	: 66mm
Power	: A76/LR44 Battery 1.5V (2 Pcs) or USB external source (backup)
Storage temperature	: -30°C ~ 70°C

Note: Product specifications are subjected to change without prior notice

DIGIPAS USA LLC
www.egeetouch.com

304 W Main Street, #120
Avon, CT 06001 U.S.A



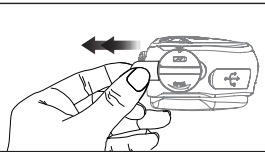
Like us on Facebook
www.facebook.com/egeetouch



Visit our Youtube
www.youtube.com/egeetouch

Operating Instructions

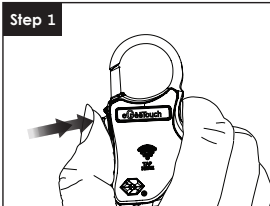
Note: Please refer to www.egeetouch.com/support for the complete step by step guides, updated quick guide, demo videos & more



Remove battery keeper to connect the batteries.

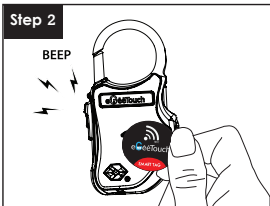
Using NFC smart fob to unlock

Note: No installation of eGeeTouch manager app is required



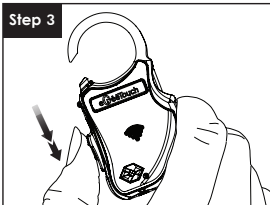
Press & hold the power button ③ for ~2-3 sec until the LED light ⑤ flashes in green accompanied by an audible buzzer sound.

The device is now ON and ready to detect any paired-NFC smart fob.



Tap a paired-NFC smart fob at the indicated NFC receiver area ⑥. An audible buzzer sound and green flashing LED light indicate a successful unlocking of the Smart Travel Padlock.

Any unpaired-NFC smart fob will be denied access, indicated by a red flashing LED light & multiple buzzer sound.

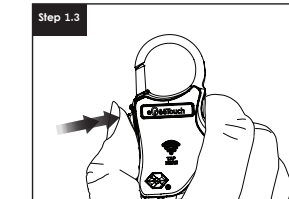


Pull the lock slider ② downwards to release the shackle.

Using smartphone to unlock

Note: eGeeTouch Manager application is compatible with any Bluetooth-enabled smartphone running iOS 8.0 & above and Android OS 4.4 & above.

- 1. Pair your smartphone to your Smart Travel Padlock
 - 1.1 Launch eGeeTouch Manager App
 - 1.2 Select the Smart Travel Padlock to pair



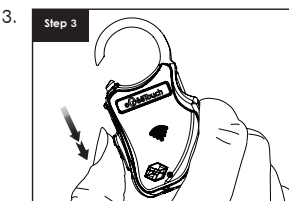
Press the power button ③ on the Smart Travel Padlock once. The LED light ⑤ flashes in red accompanied by an audible buzzer sound.

The device is now ON & ready to pair with your smartphone.



Tap the lock icon in your mobile app to unlock your Smart Travel Padlock.

The lock icon in your app changes & turn green indicating successful unlocking of Smart Travel Padlock



Pull the lock slider ② downward to release the shackle

Smart features

To explore other smart features, select these icons below in your mobile app. Please refer to www.egeetouch.com/support for detailed video illustrations of the smart features



Lock / Unlock



Manage Tag



Manage user



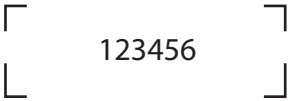
Vicinity Tracking



Audit Trails

How to pair & setup your smartphone

Note: Please remember your primary password, you are advised to change to your preferred password



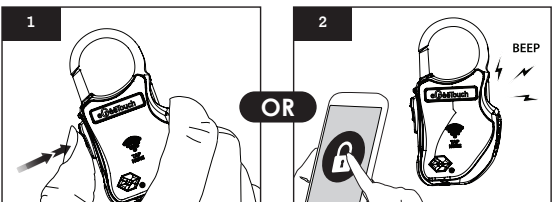
PRIMARY PASSWORD

- 1. Download & Install "eGeeTouch Manager" App from Apple App store and/or Google Playstore.
- 2. Start "eGeeTouch Manager" & follow on screen instructions to sign up for a new account.
- 3. Upon signing up, login with your email address & password.
- 4. Select "Add lock +" & follow on-screen instructions. Primary password is required for this initial setup.

How to change & update lock's name & primary password

- 1. Pair Smart Lock with your smartphone.
- 2. Select the setup icon in your mobile app's function menu found at the bottom of the screen.
- 3. Follow on-screen instructions.

How to lock smart lock

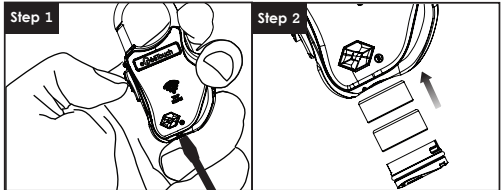


- 1. Press the power button once. The LED light will flash in red accompanied by multiple buzzer sound, indicating that the smart padlock is securely locked; or
- 2. Tap the lock icon in your mobile app to unlock your Smart Travel Padlock

LED & sound indication charts

ACTION	LED INDICATION	SOUND INDICATION	LOCK STATUS
Press Power Button Once	Short Flashing Red LED	Beep once	Bluetooth Broadcast Mode. Device turned on and ready to pair with smartphone
Press & Hold Power Button for ~2-3 seconds	Short Flashing Green LED	Beep once	NFC Broadcast Mode. Device turned on and ready to interact with paired-NFC smart fob
Press Power Button Once and Select Smart Locks on eGeeTouch App	Long Flashing Red LED	Beep once	Smart Lock and Smartphone are paired & connected
Press Power Button Once [to lock smart lock]	Short Flashing Red LED	2 Short Beeps + 1 Short beep	Device is securely lock and enter Bluetooth Broadcast Mode
Tap NFC Smart Fob to Smart Lock's NFC Receiver Area	Short Flashing Green LED	Beep Once	Device is Unlock
Tap NFC Smart Fob to Smart Lock's NFC Receiver Area	Short Flashing Red LED	3 Short Beeps	Smart Fob ID Rejected

How to install/replace batteries



Remove the battery cover by turning clockwise.

Insert 2 pieces of A76/LR44 batteries with the battery positive (+) side facing up. Put back the battery cover and tighten the screw.

Note: - Please refer to "Product Overview" for ②, ③, ⑤, ⑥ markers.
- eGeeTouch Manager application & Smart Travel Padlock is compatible with any Bluetooth-enabled smartphone running iOS 8.0 & above and Android OS 4.4 & Above.