

Quick Installation Guide

WiPi2-BLE

Trade Mark: EMBEST

M/N: EXP-WBU00

Manufacturer: Embest Technology Co.,Ltd



A Hardware Installation

Set up Bluetooth+ WiFi Adapter

1. Pls plug the adapter into the usb port of computer directly

Note : There are two functions for this adapter , you could choose the WiFi or Bluetooth function which you need , once you choose one that other function you cannot use at the same time .


B Wireless network card application


1、 Install wireless adapter driver

1、 Find and run the “Setup .exe ” in the CD driver as shown in the below picture after you put the CD into your computer.

2、 Click “Next” to setting up

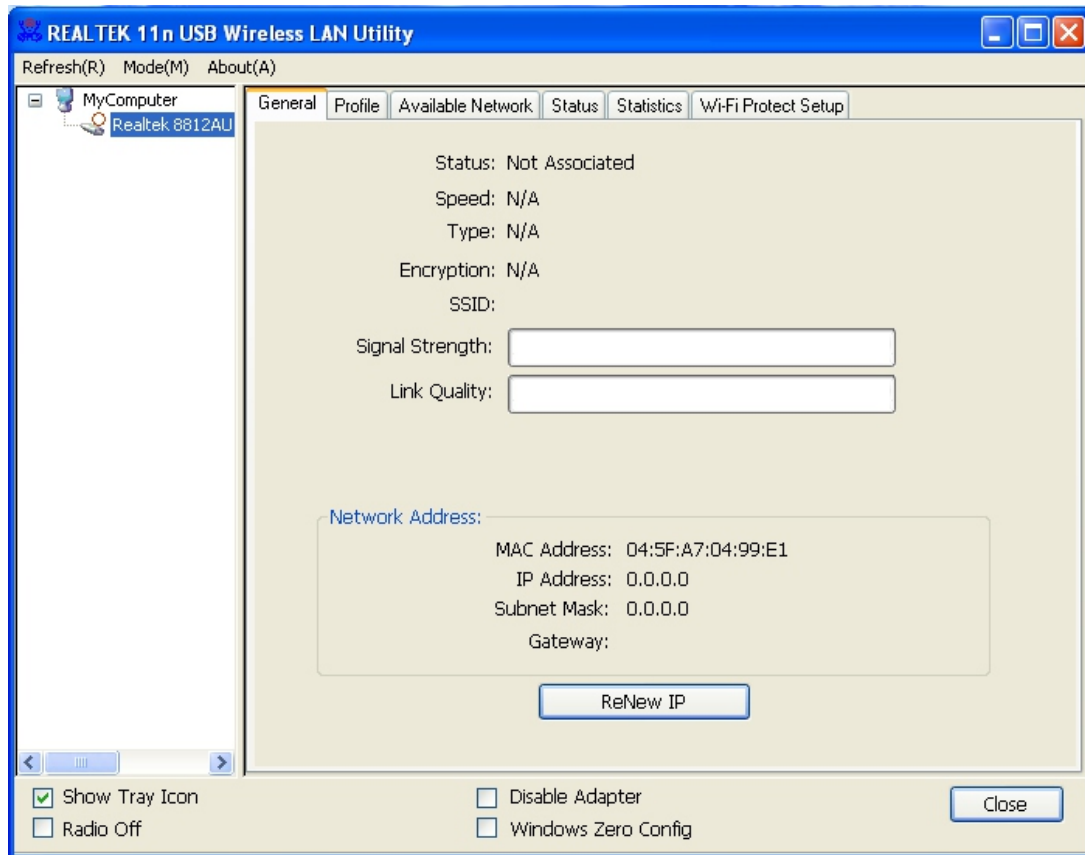


Once the application is installed ,the computer system will appear icon (REALTEK Client Management software ) at the bottom right corner of the task bar .This icon show that installation is successful .

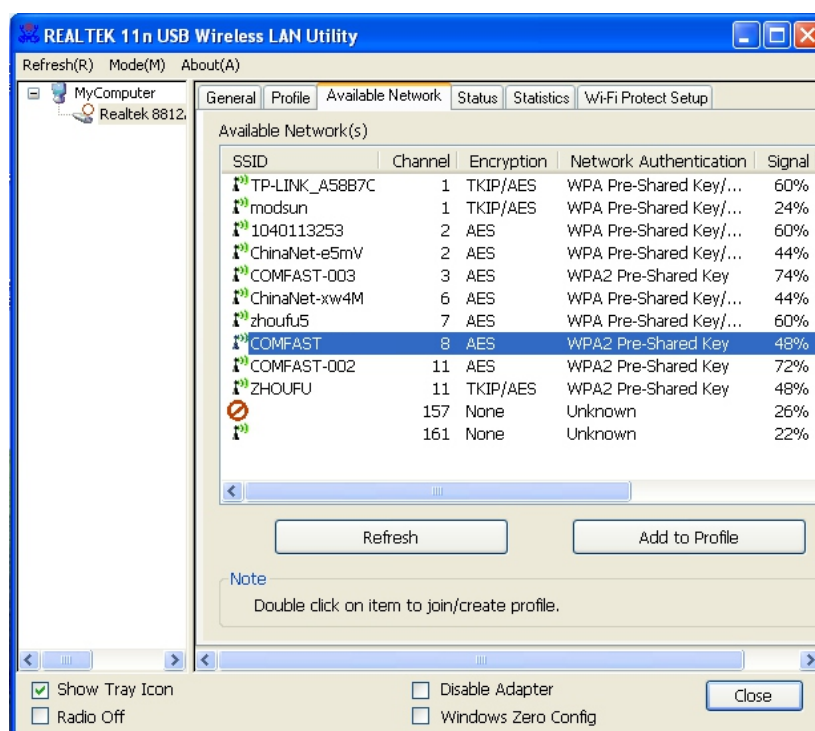
Note :After installation ,if the icon show  a blue crab shaped figure with a red cross at the bottom right corner ,it means two cases .One is the wireless adapter losing connection from computer ,please try other usb port to connect , another is the failure of installation ,pls to download the newest driver software from our official and install again .

2、 Network Connection Settings

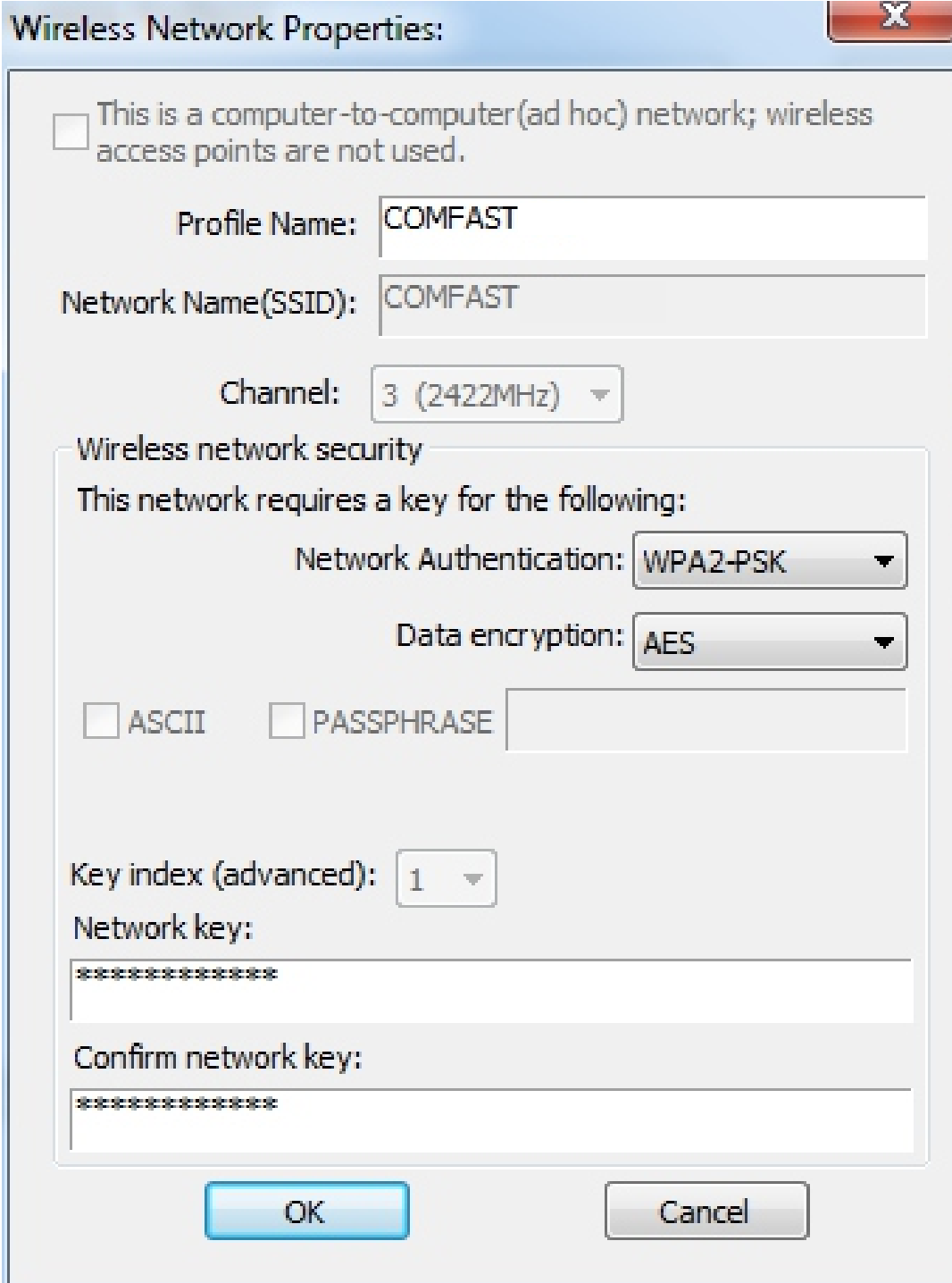
1、 Double click the icon  that come into the wireless client management software, as shown in the follow picture



2、 Click “Available Network ” ,chose the SSID of the wireless network which you want to connect into “Add to profile ” ,as shown in the follow picture



3、 Enter the network key and confirm the network key and chose ok ,as shown as the follow picture



The image shows a Windows XP-style dialog box titled "Wireless Network Properties:". It contains several configuration options for a wireless network. At the top, there is a checkbox labeled "This is a computer-to-computer (ad hoc) network; wireless access points are not used." Below this, there are text boxes for "Profile Name:" (containing "COMFAST") and "Network Name (SSID):" (containing "COMFAST"). A "Channel:" dropdown menu is set to "3 (2422MHz)". A section titled "Wireless network security" contains the text "This network requires a key for the following:". Below this, "Network Authentication:" is set to "WPA2-PSK" and "Data encryption:" is set to "AES". There are checkboxes for "ASCII" and "PASSPHRASE", with a text box next to "PASSPHRASE". A "Key index (advanced):" dropdown is set to "1". At the bottom of the security section, there are two text boxes: "Network key:" and "Confirm network key:", both containing masked text represented by asterisks. At the very bottom of the dialog are "OK" and "Cancel" buttons.

Wireless Network Properties:

☐ This is a computer-to-computer (ad hoc) network; wireless access points are not used.

Profile Name: COMFAST

Network Name (SSID): COMFAST

Channel: 3 (2422MHz)

Wireless network security

This network requires a key for the following:

Network Authentication: WPA2-PSK

Data encryption: AES

☐ ASCII ☐ PASSPHRASE

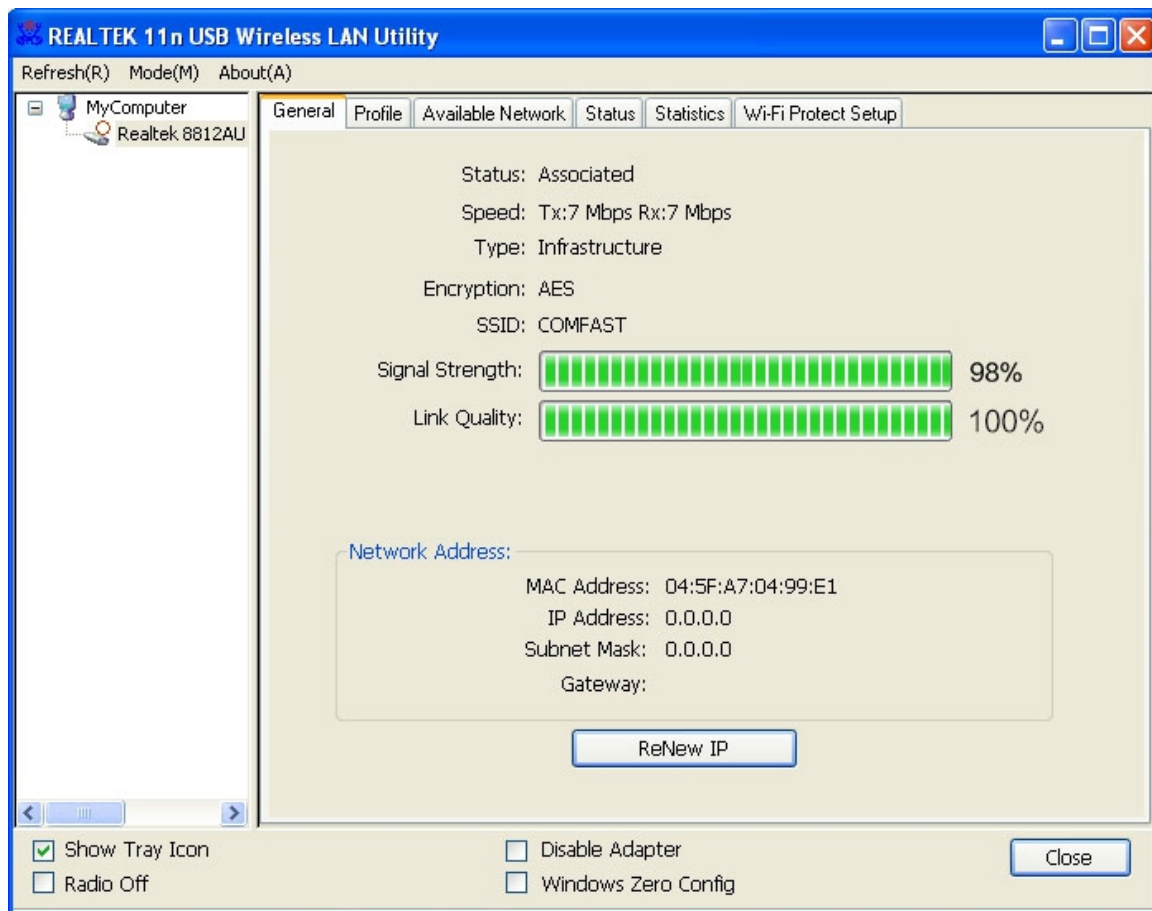
Key index (advanced): 1

Network key:

Confirm network key:

OK Cancel

4、 After successful connection ,it will show the signal strength and link quality .As shown in the follow picture



Note: If it could not get the IP address or receive data packets ,the password maybe error ,pls reenter the correct password and get the IP address ,as shown in the picture

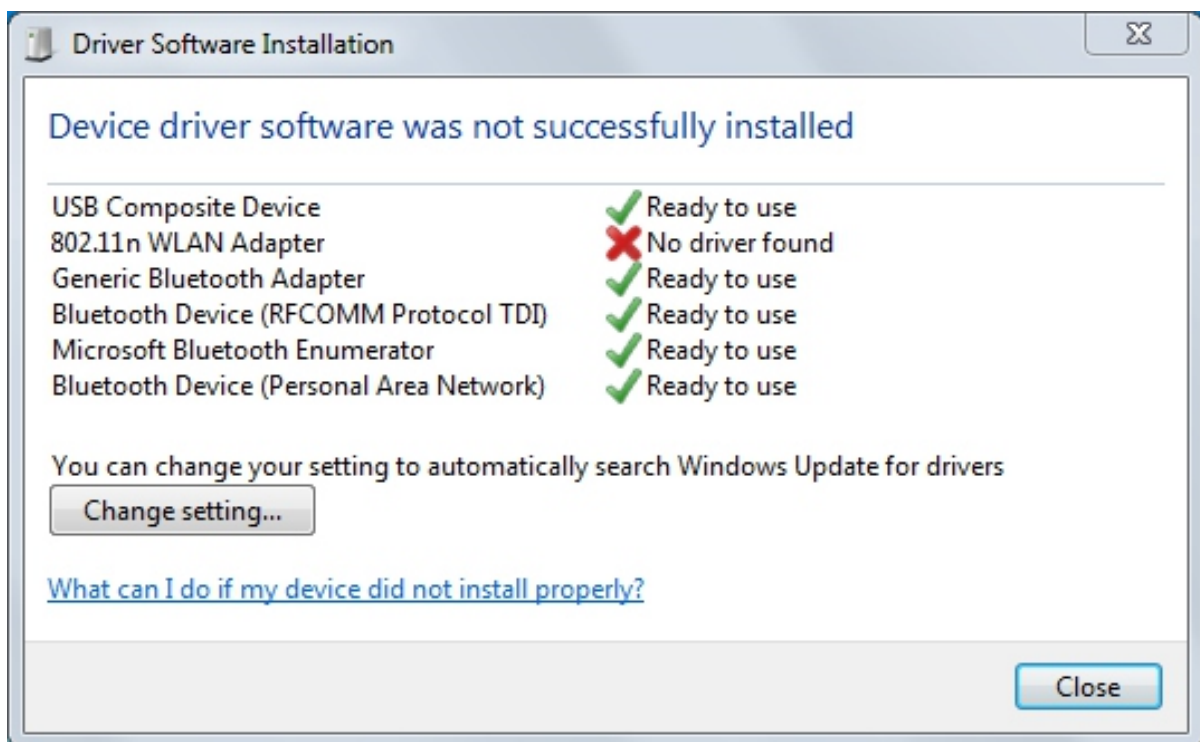
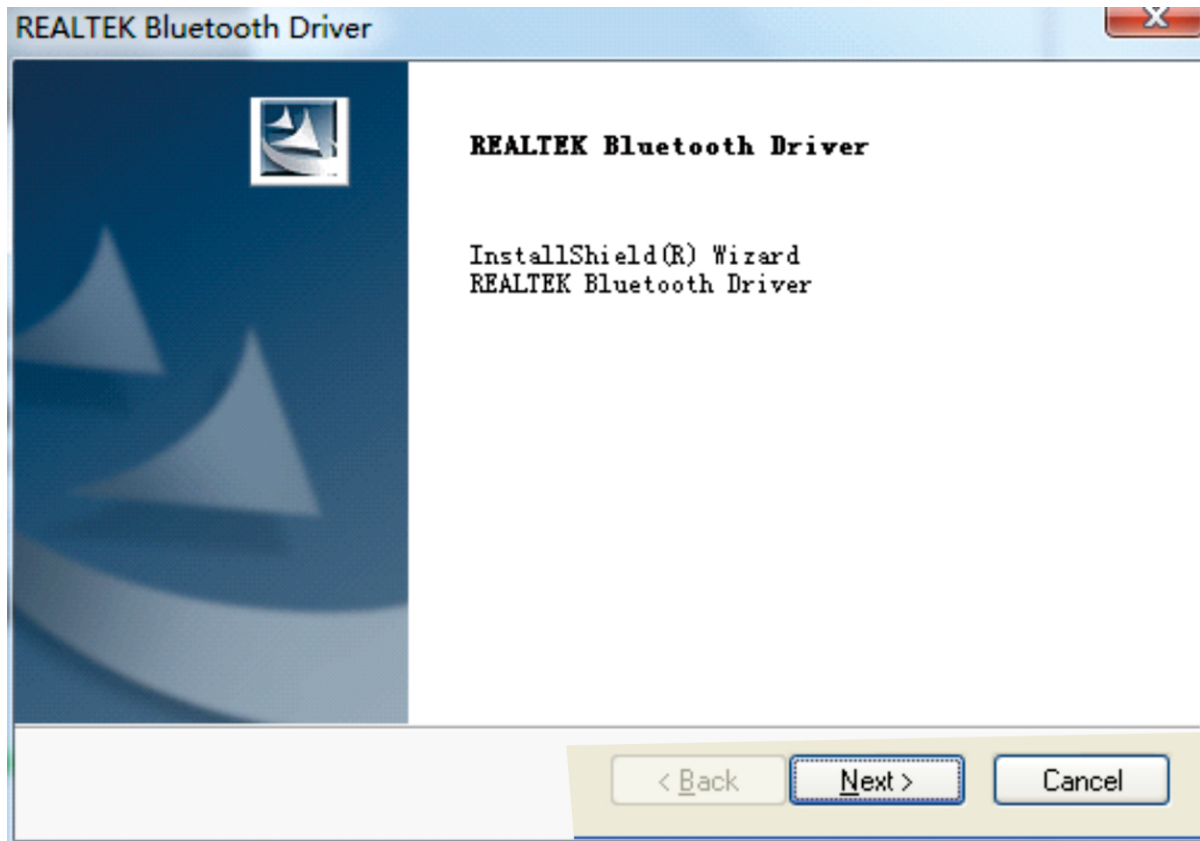
Bluetooth devices application

1、 Bluetooth Adapter Installation

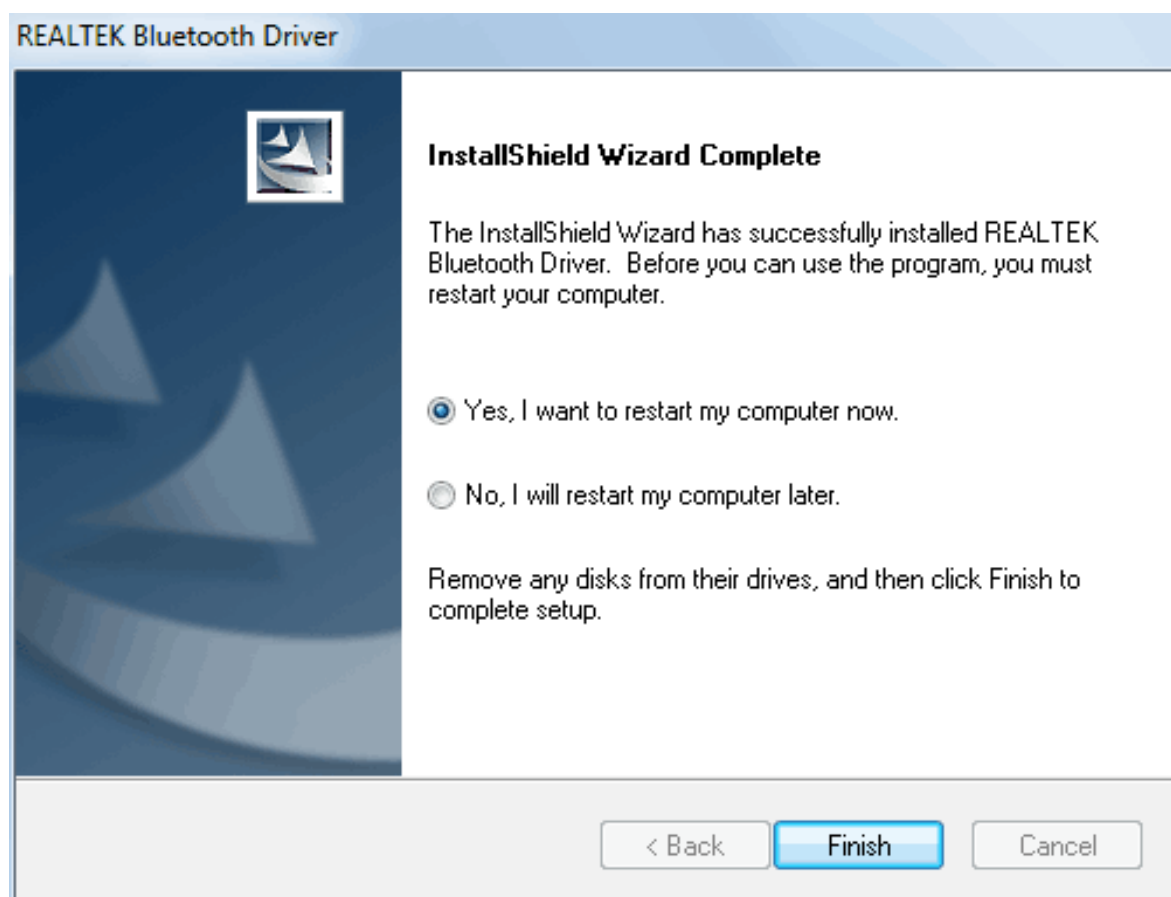
Note: Bluetooth Adapter driver can only use on Windows7 ,Windows8 and Windows 8.1.In some cases inserted adapter to the Windows 7, the system may automatically install bluetooth driver; This situation must be required to install CD with bluetooth driver can normal use.

1、 Run “Setup.exe” after you put the CD into the computer and click the name of CD .

Click “Next ” to continue setting ,as shown in the follow picture:



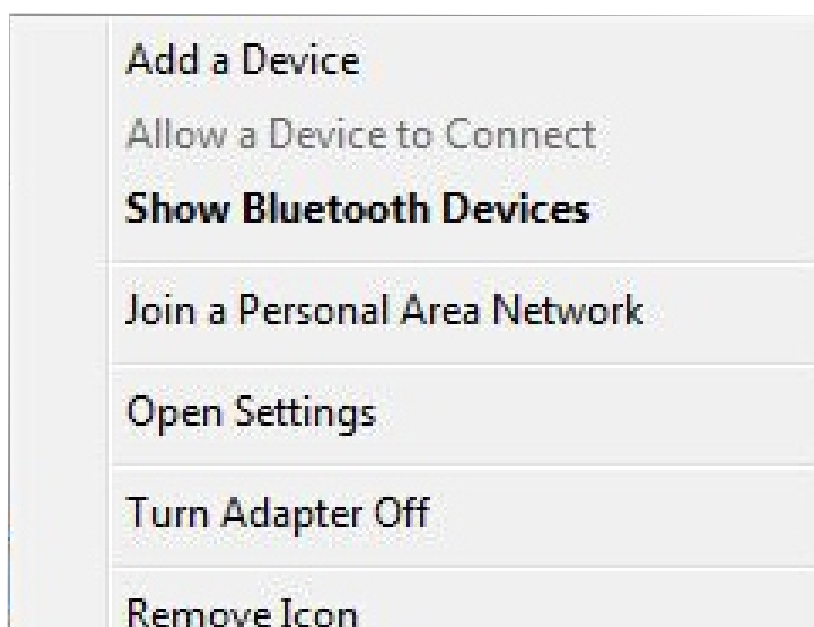
Chose “Yes” that agree to restart your computer ,press the “finish” to waiting the computer to start,as shown in the follow picture

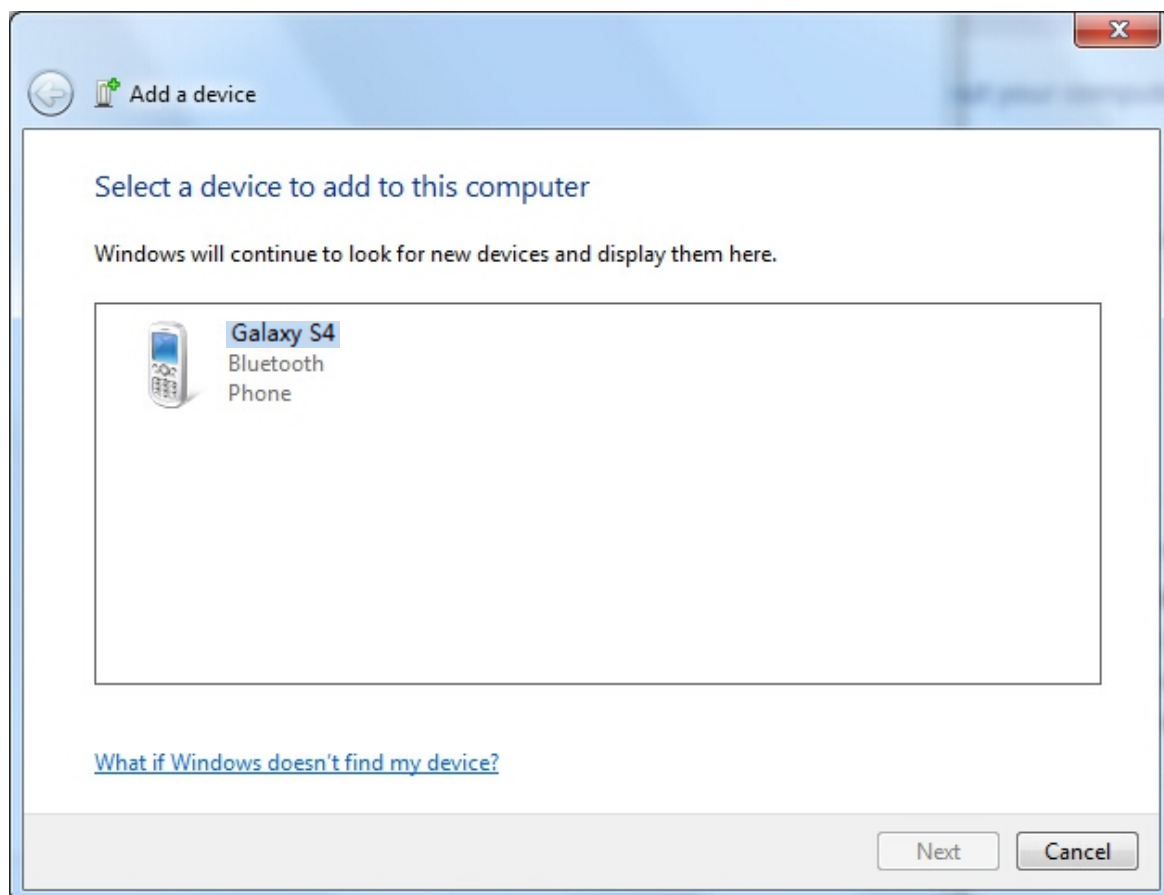


2、 Bluetooth connect to devices

If the icon will show  Bluetooth Icon management software after installation,,it means installation is successfully .

After Bluetooth driver finish installing ,in the task bar has a Bluetooth signal icon, click on the "add equipment"; and open your phone , PC will search Bluetooth information of the mobile phone, as follow:

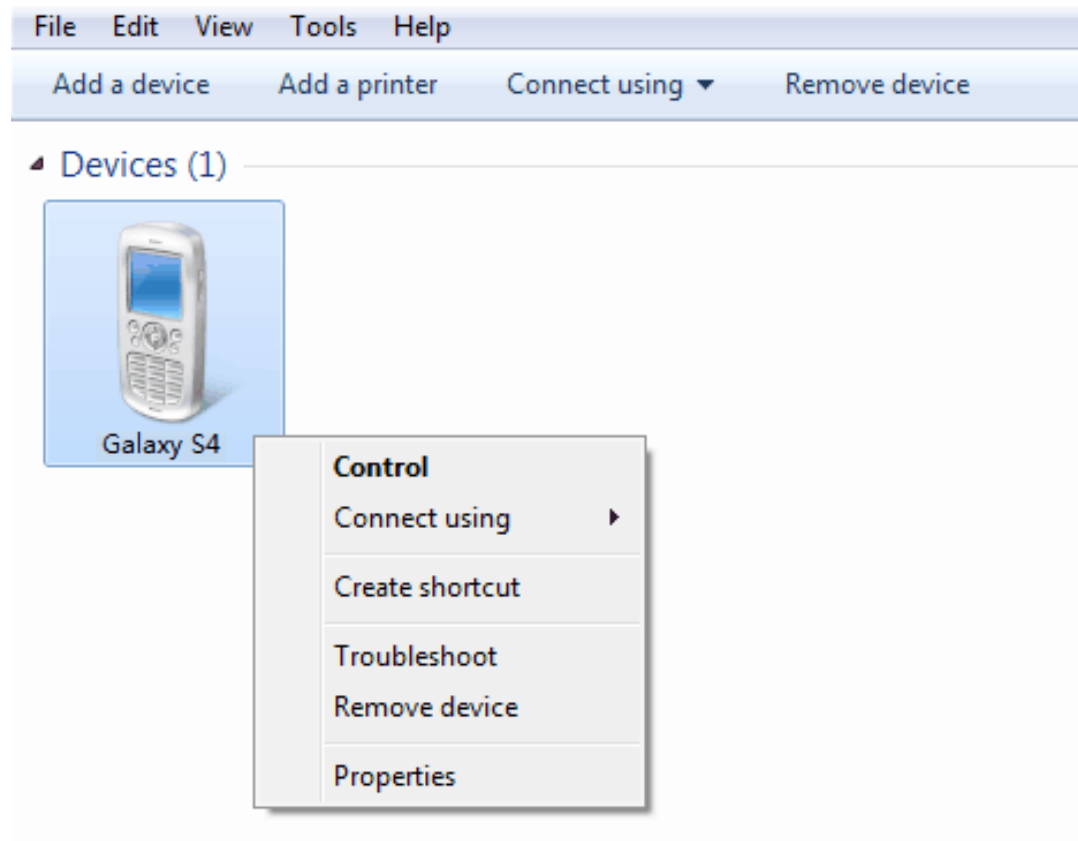




PC will appear verification code after you click “Next”, at the same time mobile will receive the verification code from PC that match mobile phone with computer, PC click “next”, you could use normally with the Bluetooth function .



Click on the Bluetooth icon in the task bar, select "show Bluetooth device", then select "send file" option to send the file to the mobile ; At the same time mobile phone can also send the file to the computer .



FCC Warning:

This equipment has been tested and found to comply with the limits for a Class B digital device, pursuant to part 15 of the FCC Rules. These limits are designed to provide reasonable protection against harmful interference in a residential installation. This equipment generates, uses and can radiate radio frequency energy and, if not installed and used in accordance with the instructions, may cause harmful interference to radio communications. However, there is no guarantee that interference will not occur in a particular installation. If this equipment does cause harmful interference to radio or television reception, which can be determined by turning the equipment off and on, the user is encouraged to try to correct the interference by one or more of the following measures:

- Reorient or relocate the receiving antenna.
- Increase the separation between the equipment and receiver.
- Connect the equipment into an outlet on a circuit different from that to which the receiver is connected.
- Consult the dealer or an experienced radio/TV technician for help.

Caution: Any changes or modifications to this device not explicitly approved by manufacturer could void your authority to operate this equipment.

This device complies with part 15 of the FCC Rules. Operation is subject to the following two conditions: (1) This device may not cause harmful interference, and (2) this device must accept any interference received, including interference that may cause undesired operation.