

# SelfieStick Tripod

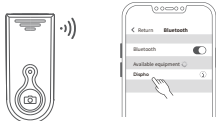
Quick Start Guide

## Operation instruction

### 1. Bluetooth Connection

Press and hold the Photo button on the remote control for about 3 seconds to power it on.

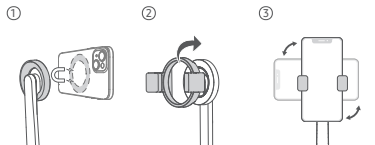
Enable the Bluetooth of the mobile phone, search for the Bluetooth device name "Dispho" and connect.



### 2. Install mobile phone

Magnetic usage: The back of the mobile phone is aligned with the magnetic ring and automatically adsorbed (Note: the magnetic ring adsorption is only applicable to the mobile phone with the magnetic sheet, other mobile phones please use silicone sleeve to fix).

How to use the silicone sleeve: First put the silicone sleeve on the magnetic ring, and then clip the phone on the mobile phone clip.



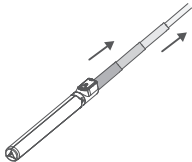
\*Attach the magnet ring to  
iphone's magsafe area

Put on the silicone sleeve

Install mobile phone

- 1 -

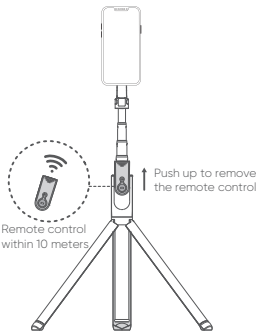
### 3. Extending the Selfie Stick



### 4. Shooting with the Remote Control

Turn on the camera of the mobile phone and press the camera button of the remote control to shoot.

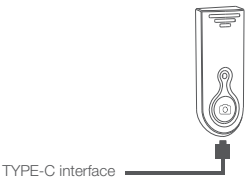
Note: You can open the tripod and take off the Bluetooth remote control according to your needs.



- 2 -

## Charging Mode of Remote Controller

Connect the TYPE-C interface charging, and the red light will be on for a long time during the process of charging; the red lamp will be off automatically after charging is finished.



## ⚠ WARNING

1. Watch your hands during use.
2. The product is not designed for children under 14 years old. Do not swallow it.
3. Do not dismantle or modify the product.
4. Do not store the product in a humid environment.
5. Keep the product away from heat sources.
6. Do not expose the product to water or other liquids in case of damage.
7. Keep the dead battery out of the reach of children, and dispose of or recycle it properly according to local laws and regulations.
8. This product is not waterproof, please do not expose it to rain or moisture.

- 3 -

This device complies with Part 15 of the FCC Rules . Operation is subject to the following two conditions: (1) This device may not cause harmful interference, and (2) this device must accept any interference received, including interference that may cause undesired operation.

The device has been evaluated to meet general RF exposure requirement. The device can be used in portable exposure condition without restriction Federal Communication Commission (FCC) Radiation.

NOTE: The manufacturer is not responsible for any radio or TV interference caused by unauthorized modifications or changes to this equipment. Such modifications or changes could void the user' s authority to operate the equipment.

NOTE: This equipment has been tested and found to comply with the limits for a Class B digital device, pursuant to part 15 of the FCC Rules. These limits are designed to provide reasonable protection against harmful interference in a residential installation. This equipment generates uses and can radiate radio frequency energy and, if not installed and used in accordance with the instructions, may cause harmful interference to radio communications. However, there is no guarantee that interference will not occur in a particular installation. If this equipment does cause harmful interference to radio or television reception, which can be determined by turning the equipment off and on, the user is encouraged to try to correct the interference by one or more of the following measures:

- Reorient or relocate the receiving antenna.
- Increase the separation between the equipment and receiver.
- Connect the equipment into an outlet on a circuit different from that to which the receiver is connected.
- Consult the dealer or an experienced radio/TV technician for help.

FCC Caution: Any changes or modifications not expressly approved by the party responsible for compliance could void the user's authority to operate this equipment.