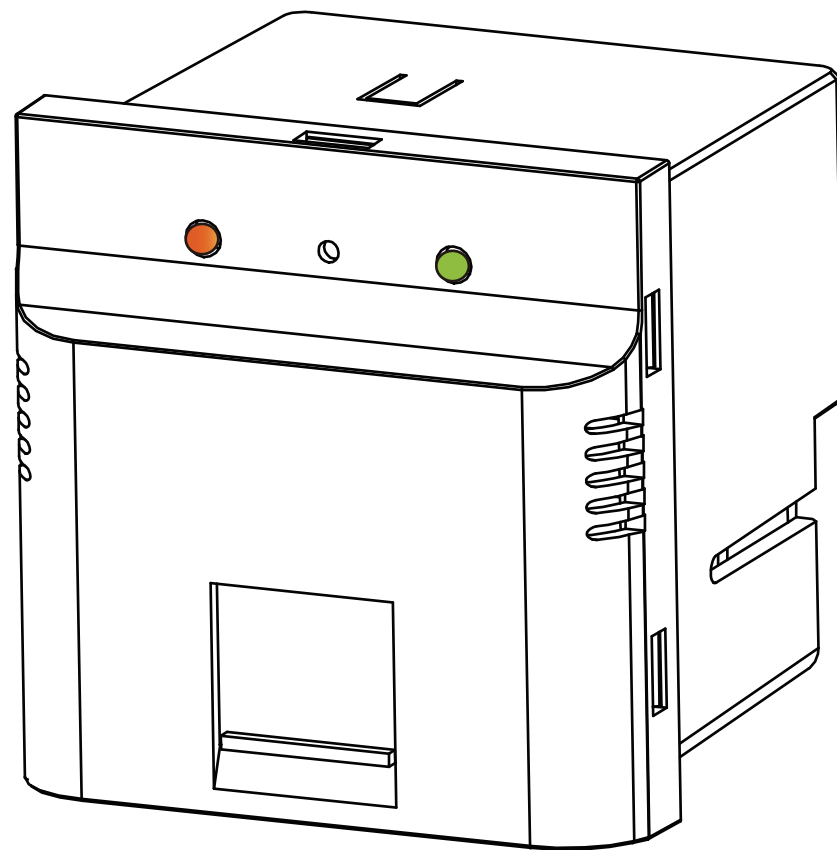


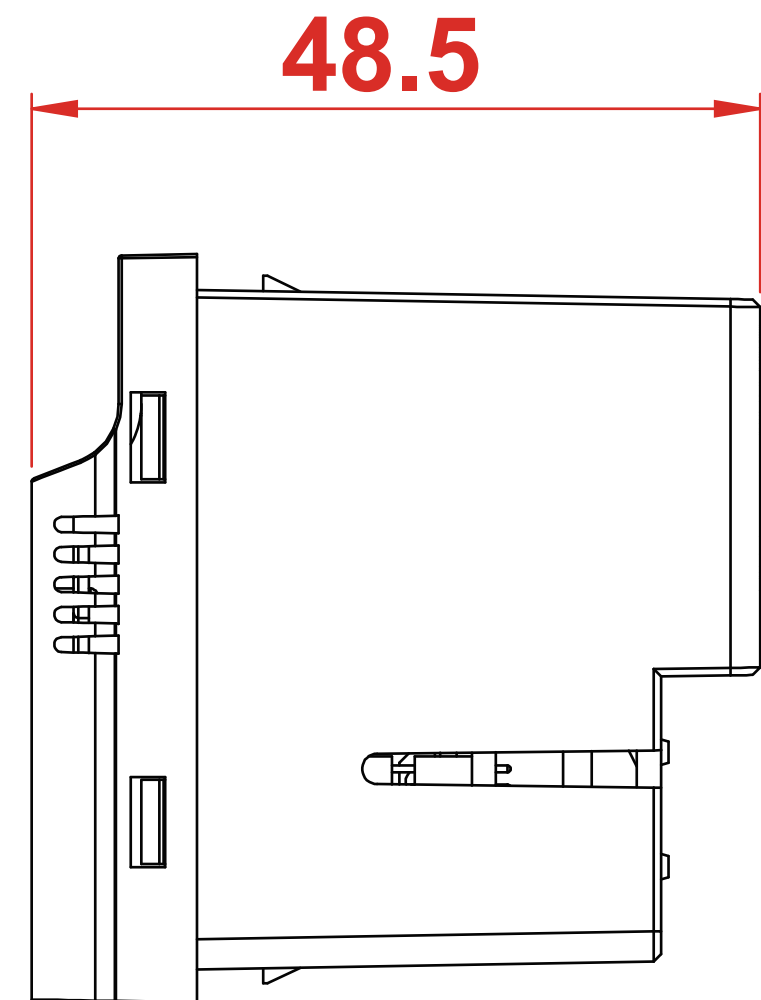
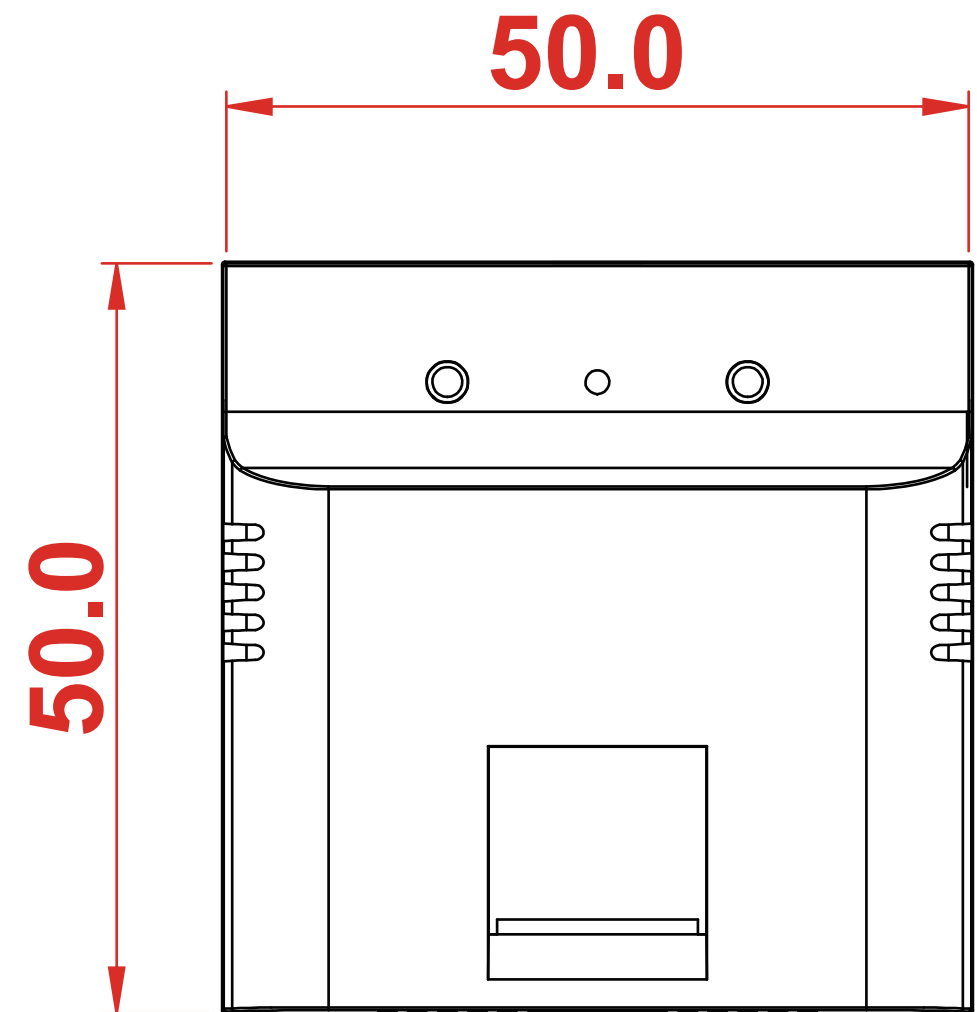
1+1 WALL-MOUNT ACCESS POINT INSTALLATION



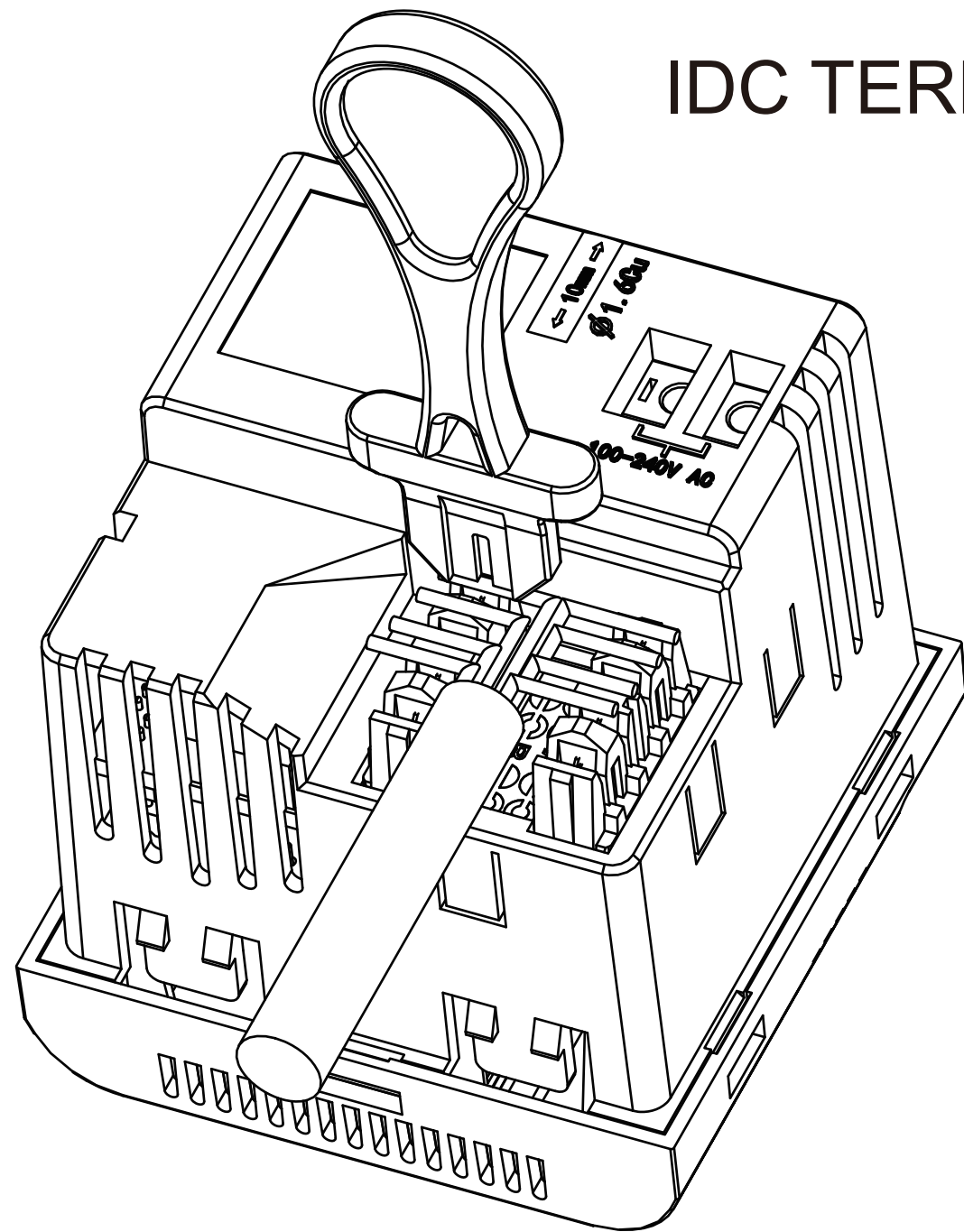
DIMENTSION



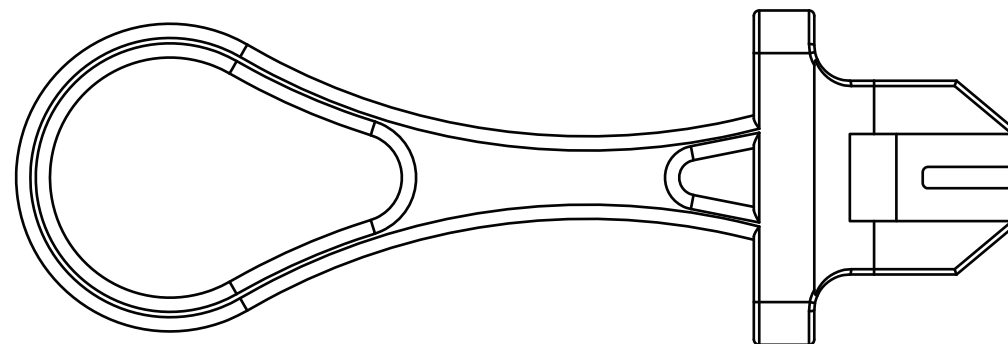
*Unit:mm



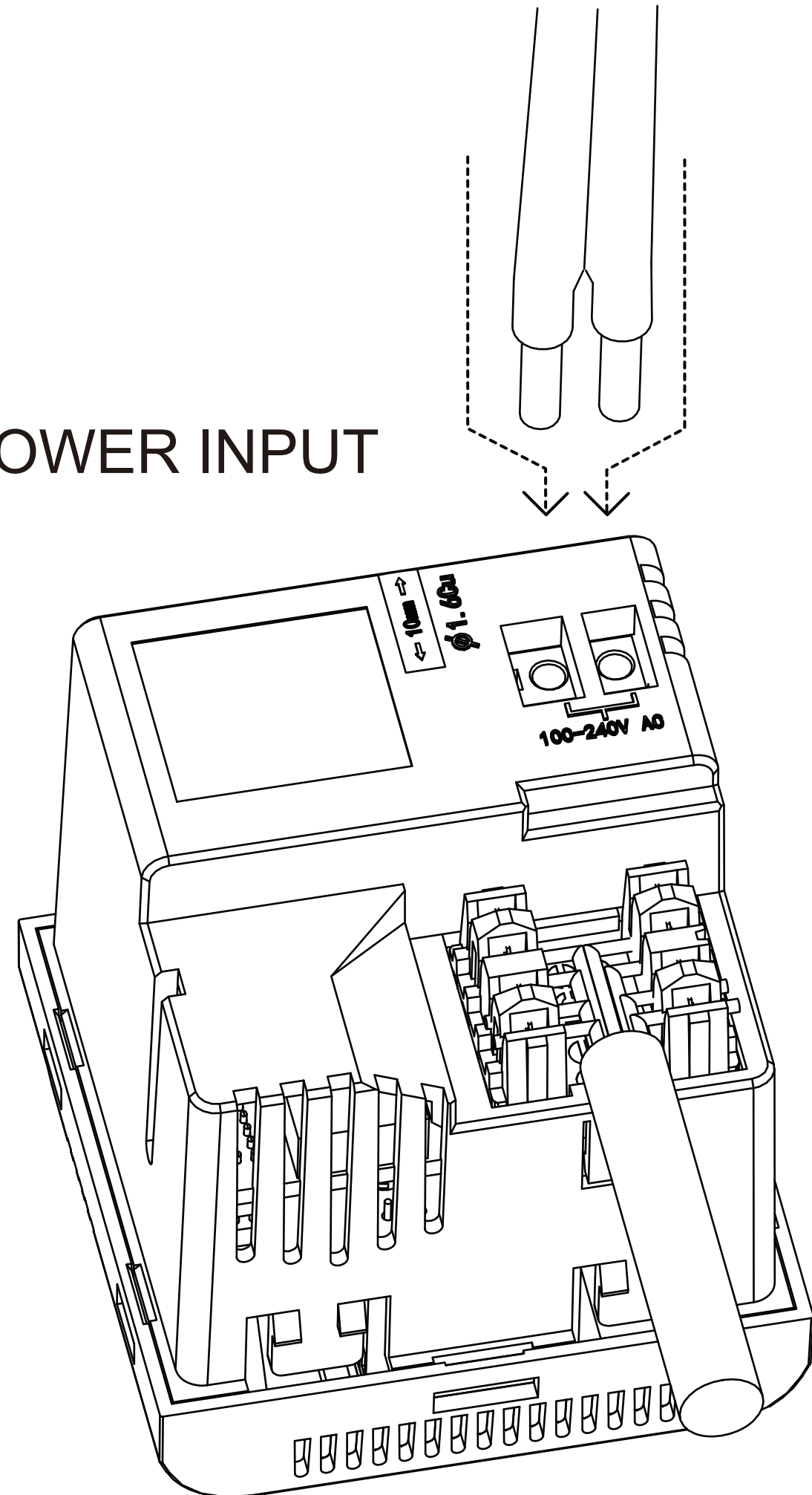
IDC TERMINATION

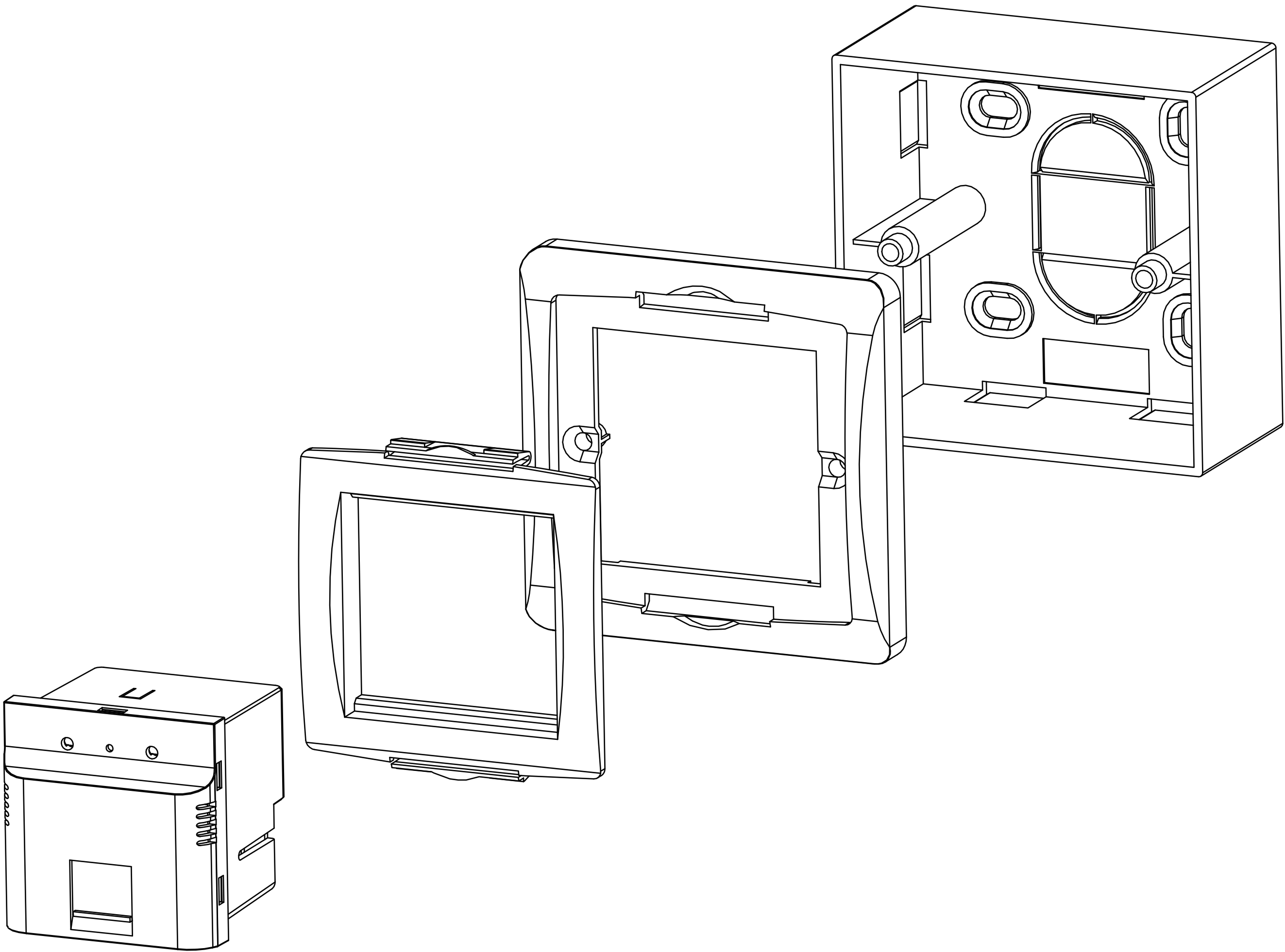


EASY TERMINATION TOOL



POWER INPUT





Specification

Feature	Specification	Notes
General		
LAN Port	One 100/1000 Gigabit Ethernet Port	
WAN Port	One 100/1000 Gigabit Ethernet Port	
Frequency band	2.4GHz	
Bandwidth	20MHz, 40MHz	
Network Management		
Local management	HTTP Web Browser	
Hardware		
LED	2 LEDs	
Interfaces	Reset Button - Capable of restoring to factory default settings, holding over 5 seconds - Capable of resetting to system reboot holding less than 5 seconds	
Radio		
Antenna	IPEX antenna connector 2	
Networking		
Internet Access Mode	Acess Point	
DHCP	DHCP Client / Server / Pre-definable IP	
DNS	DNS Proxy or DNS Relay	
WAN Connection Type	Dynamic IP (DHCP) / Static IP assignment	
Wifi		
Standard	IEEE802.11 b/g/n	
WLAN Schedule	- Enable/disable wireless interface perday and timeslots base - Activate/Deactivate via HTTP - From Sunday to Saturday, 24 hours wireless operation can be timer programmable.	
Security	WPA-PSK / WPA2-PSK	
QoS	WMM	
Channel	Auto Channel Selection, User Selectable Scan Interval Programmable	
Operational Temperature		
Ambient temperature	-20~50 °C	
Operating Humidity	10 to 90% RH (non-condensing)	
Storage Humidity	5 to 90% RH (non-condensing)	
Storage Temperature	-20~70 °C	
IDC Connect		
Connect Type	110/KRONE TERMINAL BLOCK with 22~23AWG Solid Cable	
Power		
Power input	AC power adaptor: 100-240 VAC , 50/60Hz	

※DAN-CHIEF reserves the right to modify and change technical specification.

You are cautioned that changes or modifications not expressly approved by the party responsible for compliance could void your authority to operate the equipment. The distance between user and products should be no less than 20 cm.

This device complies with Part 15 of the FCC Rules. Operation is subject to the following two conditions:

- (1) this device may not cause harmful interference, and
- (2) this device must accept any interference received, including interference that may cause undesired operation.