

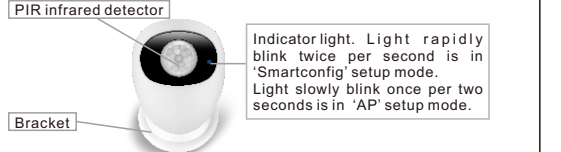


Quick Guide

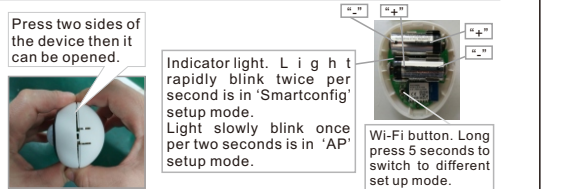
V190114-2

Warning: Device use CR123A 3V dry battery only. Rechargeable battery RCR123A 4.2V is forbidden.

1. Device

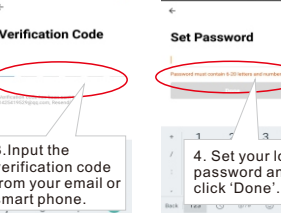
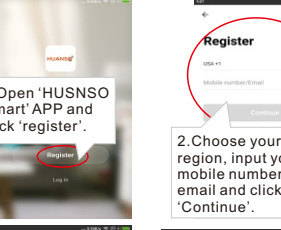


2. Open cover and install battery

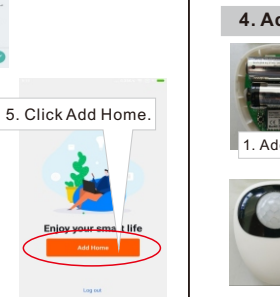
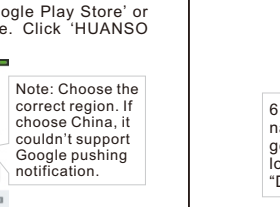


3. Install the APP

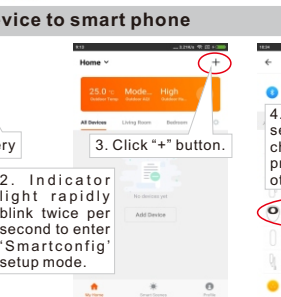
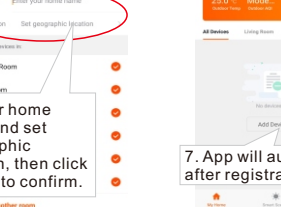
Download the APP 'Smart' from 'Google Play Store' or 'APP Store' and install on the smart phone. Click 'HUANSO Smart' APP, register and log in the account.



4. Add device to smart phone



5. APP Control



6. FAQ

Q1: Why does the device can't be connected?
A1, There are 2 modes to setup, 'Smartconfig' setup mode and 'AP' setup mode. User can long press device's Wi-Fi button for 5 seconds to switch between this 2 modes. Indicator light rapidly blink twice per second is 'Smartconfig' setup mode, user should click 'Confirm indicator rapidly blink' button in APP to setup. Indicator light slowly blink once per 2 seconds is 'AP' setup mode, user should click 'AP Mode' in the APP to setup.
2, Maybe you are using 5Ghz WiFi router, device don't support 5Ghz WIFI, user should use 2.4Ghz WiFi router to connect.
3, Maybe you input wrong WIFI password. Please input correct password.
4, Maybe your router haven't open DHCP. Pls open DHCP in your router.
5, Maybe device is too far away from the Wi-Fi router. Pls put device close to router or add Wi-Fi repeater.
6, Maybe your router's WiFi have special settings, pls reset your router.

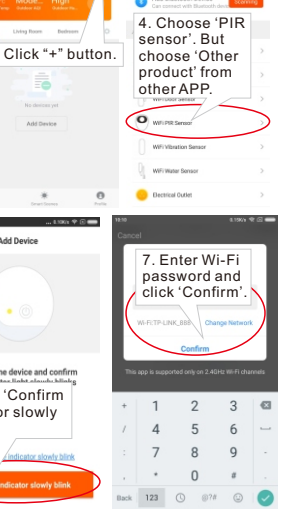
7. Specification

Battery mode:	2pcs CR123A (3V) dry battery (Note: Rechargeable battery RCR123A 4.2V is forbidden.)
Operating Voltage:	6V
Installation Height:	2 meters
Detection distance:	5 meters
Horizontal detect angle:	100 degree
Wi-Fi Frequency:	2.4GHz
Wi-Fi Protocol:	802.11b/g/n
Standby Time:	1 year
Use Time:	Totally about 6000 times detection About 1 year if each day 15 detections About 6 months if each day 30 detections

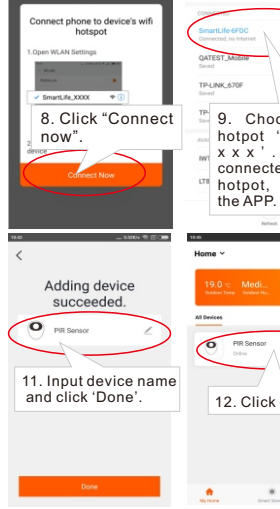
8. Note

Note: If user can't setup device in above way, user can try below AP setup.

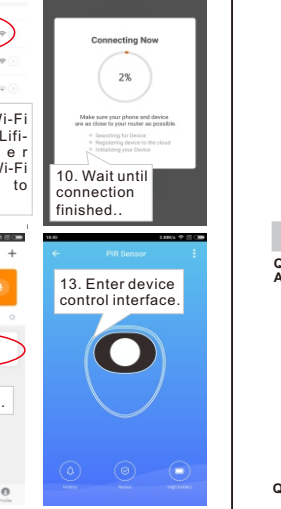
9. AP Setup



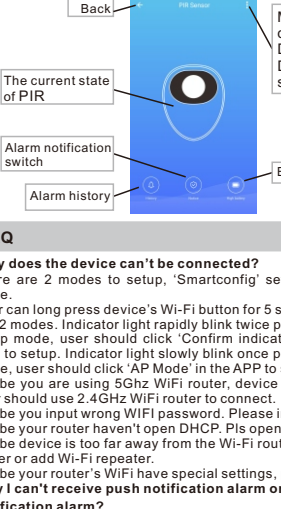
10. Add Device



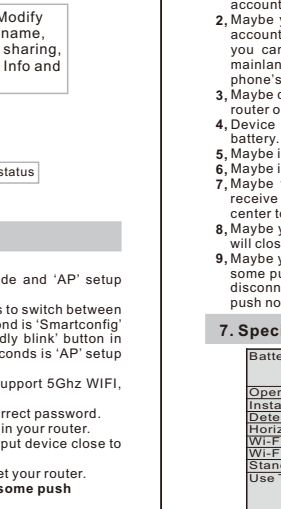
11. Add Device



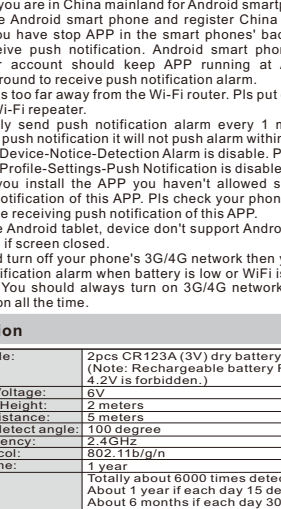
12. Add Device



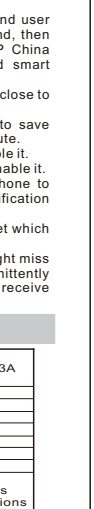
13. Add Device



14. Add Device



15. Add Device



FCC Caution:

This device complies with part 15 of the FCC Rules. Operation is subject to the following two conditions: (1) This device may not cause harmful interference, and (2) this device must accept any interference received, including interference that may cause undesired operation.

Any Changes or modifications not expressly approved by the party responsible for compliance could void the user's authority to operate the equipment.

Note: This equipment has been tested and found to comply with the limits for a Class B digital device, pursuant to part 15 of the FCC Rules. These limits are designed to provide reasonable protection against harmful interference in a residential installation. This equipment generates uses and can radiate radio frequency energy and, if not installed and used in accordance with the instructions, may cause harmful interference to radio communications. However, there is no guarantee that interference will not occur in a particular installation. If this equipment does cause harmful interference to radio or television reception, which can be determined by turning the equipment off and on, the user is encouraged to try to correct the interference by one or more of the following measures:

- Reorient or relocate the receiving antenna.
- Increase the separation between the equipment and receiver.
- Connect the equipment into an outlet on a circuit different from that to which the receiver is connected.
- Consult the dealer or an experienced radio/TV technician for help.

This equipment complies with FCC radiation exposure limits set forth for an uncontrolled environment. This equipment should be installed and operated with minimum distance 20cm between the radiator & your body.