



## Instruction Manual

### FCC RF Radiation Exposure Statement:

This equipment complies with FCC radiation exposure limits set forth for an uncontrolled environment. End users must follow the specific operating instructions for satisfying RF exposure compliance. This transmitter must not be co-located or operating in conjunction with any other antenna or transmitter.

Bluetooth® FCC ID: 2AFGM00638

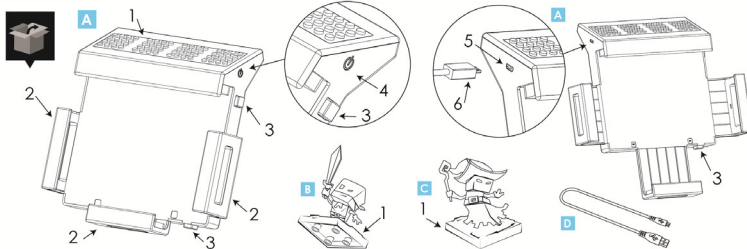
Model NO.:00638 INPUT: 5V=1A(MAX)

AzooCa. All Rights Reserved 2015.  
Patent and Patent Pending

For your personal safety and the safety of others, before using this product, please carefully read all of the accompanying documentation. Please retain all of the documentation as it contains important information about the product.

If you have any questions or technical issues, please visit our support website first before returning the product.  
[support.azooCa.com](http://support.azooCa.com)

**WARNING:**  
CHOKING HAZARD—Small parts.  
Not for children under 3 years.



### A.) IzooCa Bridge

1. Interlocking Figure Platform
2. Adjustable Tablet Arms
3. Tablet Arm Release Buttons
4. Power Button
5. Micro USB Charging Port
6. Micro USB Cable

### B.) Captain Jaxx

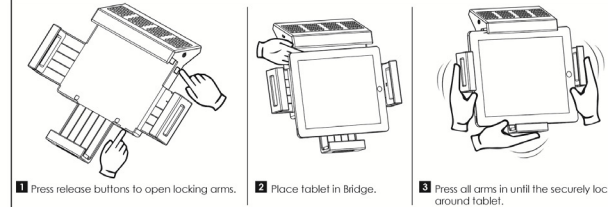
1. Locking Base

### C.) Marlin

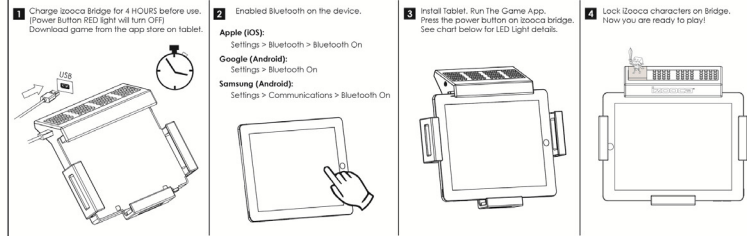
1. Locking Base

### D.) Micro USB Power Cable

## TABLET INSTALLATION



## GETTING STARTED



## LED LIGHT STATUS

LED status	Blinking 3 Colors	Solid White Light	White Light Blinks 3 Times	Power Button Red Light (SOLID)	Power Button Red Light (SLOW)	Power Button Red Light (FAST)	No Light
IzooCa Bridge status	Connecting	Failing to complete	New figure found	Low Battery	80-90% Battery (CHARGING)	Charging	Off

## TROUBLESHOOTING

## PRODUCT CARE

## LIMITED HARDWARE WARRANTY

## SAFETY WARNING

**PRODUCT CARE:** (1) Keep the accessories dry and away from open flames or other heat sources. (2) Do not leave the accessories in a dusty or humid place. (3) Do not modify or disassemble the accessories under any circumstance. (4) Never stand on the accessories. (5) Use a dry cloth to clean the accessories; never use chemicals. (6) Use the accessories only with the appropriate gaming system for which it was designed. (7) Regularly inspect the accessories. (8) If the accessories function in an unusual manner or produces smoke, immediately stop use and turn off the power.

**BATTERY SAFETY:** Rechargeable batteries are included in the IzooCa Bridge and should only be charged with included Micro USB cable provided. Battery will take up to 4 hours to fully charge with a red 5V, 1 Amp rate power adapter; to prolong the battery life, shut down the IzooCa Bridge before charging.

**LIMITED WARRANTY:** AzooCa warrants to the original consumer purchaser of this hardware or accessories (collectively, the "Hardware") that the Hardware will be free from defects in material and workmanship for 30 days from the date of purchase for consumer purchases made in the United States. If the purchaser finds the Hardware defective within 30 days of original purchase, AzooCa agrees to replace, free of charge, such Hardware discovered to be defective within such periods as long as the Hardware is still being manufactured by AzooCa. In the event that the Hardware is no longer available, AzooCa retains the right to substitute a similar product of equal or greater value. Any replacement Hardware will be new or refurbished or serviceable used, at AzooCa's option, and comparable in function and performance to the original Hardware. This warranty is limited to the Hardware as originally provided by AzooCa and is not applicable to normal wear and tear. This warranty shall not be applicable and shall be void if the defect has arisen through abuse, mistreatment or neglect.

This remedy is the purchaser's sole, exclusive remedy, and in lieu of all other express warranties. Any implied warranties on this product prescribed by statute, including but not limited to an implied warranty of merchantability or fitness for a particular purpose, are expressly limited in duration to the 30 day period described above. AzooCa reserves the right to modify this warranty prospectively at anytime and from time to time in our sole discretion.

**LIMITATION ON DAMAGES.** IN NO EVENT WILL AZOOCA BE LIABLE FOR SPECIAL, INCIDENTAL, OR CONSEQUENTIAL DAMAGES BASED UPON BREACH OF WARRANTY, BREACH OF CONTRACT, NEGLIGENCE, STRICT TORT, OR ANY OTHER LEGAL THEORY. SUCH DAMAGES INCLUDE, BUT ARE NOT LIMITED TO, LOSS OF PROFITS, LOSS OF SAVINGS OR REVENUE, LOSS OF USE OF THE HARDWARE OR ANY ASSOCIATED EQUIPMENT, COST OF ANY SUBSTITUTE EQUIPMENT, CLAIMS OF THIRD PARTIES, INJURY TO PROPERTY, AND LOSS OF GOODWILL. SOME STATES/COUNTRIES DO NOT ALLOW (1) THE EXCLUSION OR LIMITATION OF INCIDENTAL OR CONSEQUENTIAL DAMAGES, or (2) LIMITATIONS ON HOW LONG AN IMPLIED WARRANTY LASTS SO THE ABOVE LIMITATIONS AND/OR EXCLUSION OR LIMITATION OF LIABILITY MAY NOT APPLY TO YOU. THIS WARRANTY GIVES YOU SPECIFIC LEGAL RIGHTS, AND YOU MAY HAVE OTHER RIGHTS WHICH VARY FROM JURISDICTION TO JURISDICTION.

### FCC INFORMATION FOR THE CONSUMER:

This AzooCa device complies with FCC radiation exposure limits set forth for an uncontrolled environment and it also complies with Part 15 of the FCC RF Rules. Operation is subject to the following two conditions: (1) this device may not cause harmful interference, and (2) this device must accept any interference received, including interference that may cause undesired operation.

Caution: The User is cautioned that changes or modifications not expressly approved by the party responsible for compliance could void the user's authority to operate the equipment.

NOTE: This equipment has been tested and found to comply with the limited for a Class B digital device, pursuant to Part 15 of the FCC Rules. These limits are designed to provide reasonable protection against harmful interference in a residential installation. This equipment generates, uses and can radiate radio frequency energy and, if not installed and used in accordance with the instructions, may cause harmful interference to radio communications. However, there is no guarantee that interference will not occur in a particular installation.

If this equipment does cause harmful interference to radio or television reception, which can be determined by turning the equipment off and on, the user is encouraged to try to correct the interference by one or more of the following measures:  
-Reorient or relocate the receiving antenna.  
-Increase the separation between the equipment and receiver.  
-Connect the equipment into an outlet on a circuit different from that to which the receiver is connected.  
-Consult the dealer or an experienced radio/TV technician for help.

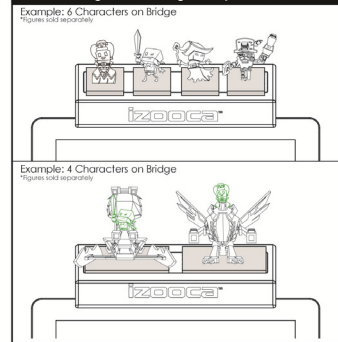
**PRODUCT DISPOSAL INFORMATION:** Dispose of this product in accordance with local and national disposal regulations (if any), including those governing the recovery and recycling of waste electrical and electronic equipment (WEEE Directive 2002/96/EC).

### WARNING: PHOTOSENSITIVITY/EPILEPSY/SEIZURES

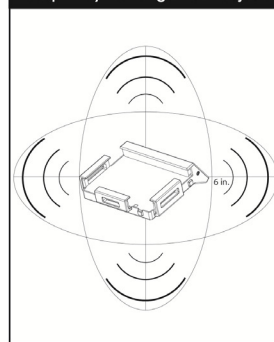
A very small percentage of individuals may experience epileptic seizures or blackouts when exposed to a certain light patterns or flashing lights. Exposure to certain patterns or backgrounds on a television screen or when playing video games may trigger epileptic seizures or blackouts in these individuals. These conditions may trigger previously undetected epileptic symptoms or seizures in persons who have no history of prior seizures or epilepsy. If you, or anyone in your family, has an epileptic condition or has had seizures of any kind, consult a physician before playing. IMMEDIATELY DISCONTINUE use and consult your physician before resuming gameplay if you or your child experience any of the following health problems or symptoms:

Dizziness	Altered Vision	Eye or Muscle Twitches	Disorientation
Loss of Awareness	Seizures	Any Involuntary movement or convulsion	

## IzooCa Bridge can recognize up to 6 characters



## Keep away from large metal objects



## USE AND HANDLING OF VIDEO GAMES TO REDUCE THE LIKELIHOOD OF A SEIZURE

- Use in a well-lit area and keep a distance from the screen
- Avoid prolonged use and take 15 minute breaks during each hour of play.
- Avoid playing when you are tired or need sleep.

Stop using the system immediately if you experience any of the following symptoms: lightheadedness, nausea, or a sensation similar to motion sickness; discomfort or pain in the eyes, ears, hands, arms or any other part of the body. If the condition persists, consult a doctor.

**AzooCa, Inc.**  
[www.azooCa.com](http://www.azooCa.com)

368 S. Cheryl Lane  
City of Industry, CA 91789  
Tel: 909-869-8083  
Fax: 909-869-7171

© 2015 AzooCa Inc. "IzooCa", "CUBETOP", "CLASH TRAXX", "CLASH BASH", "POWER SQUAD", "TURBO FORCE", "CLASH RAIDERS", "CLASH BASH" are trademarks of AzooCa Inc. in the U.S. and other countries. All logos, names, characters, likenesses, images, slogans, and packaging appearance are property of AzooCa Inc. Apple, the Apple logo, iPad, and iPad Air are trademarks of Apple Inc., registered in the U.S. and other countries. App Store is a service mark of Apple Inc. Google, Nexus, and Android are trademarks of Google Inc.

Game Code:  
izooCa123