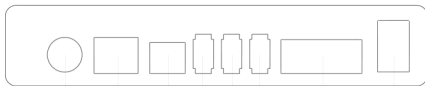
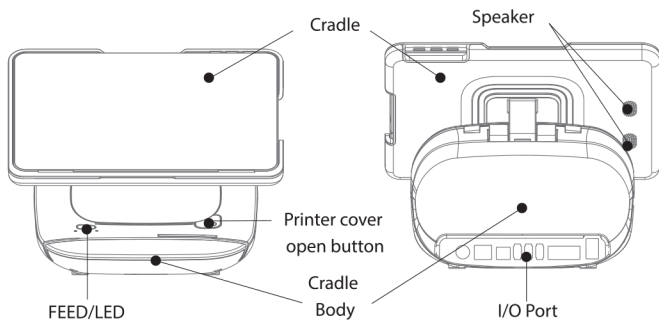


Cradle



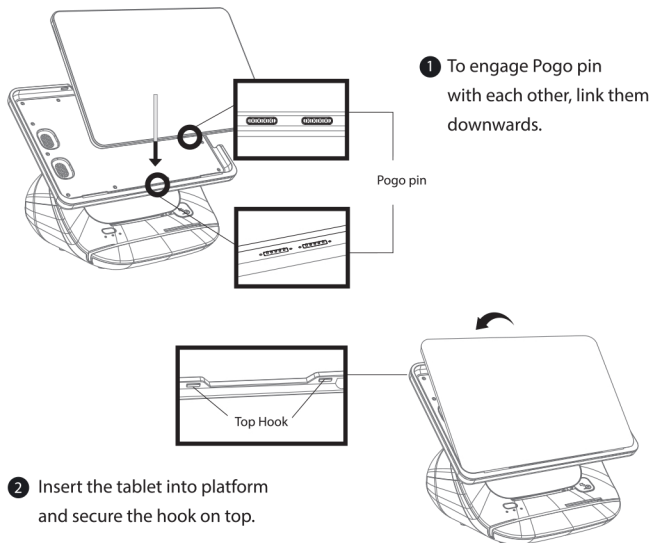
FEED/ LED

- ① FEED
- ② Power LED
- ③ Error LED
- ④ Charge LED

I/O Port

- ① Dc jack
- ② Ethernet
- ③ Cash Drawer
- ④ USB1
- ⑤ USB2
- ⑥ USB3
- ⑦ Serial
- ⑧ Power Switch

Tablet and Cradle Connection

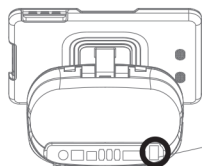


Power on the cradle

Please turn the power on after installing all optional items.

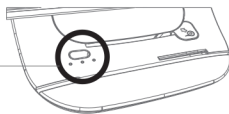
※ Connect adapter and body first before connecting power cord to a 220V (110V) outlet. The power is located on the bottom of the cradle. When the power is connected, the LED light will turn on.

Each LED lamp will indicate the operation status.



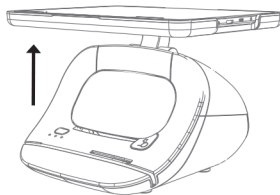
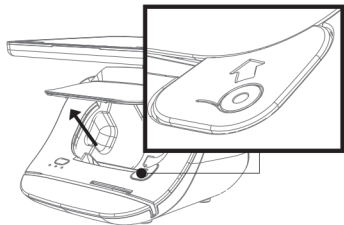
Power Switch

LED Lamp



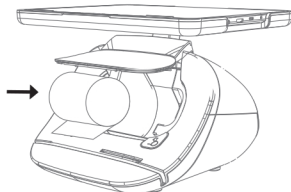
Inserting Printer Paper Roll

- 1 Lift the cradle upwards



- 2 Lift the printer cover up using the printer open button

- 3 Close the printer cover after inserting the printer paper roll.
- 4 Lower the cradle before using the product.



Product Specifications

Tablet	Specifications
Processor	RK3188T / Quad Core 1.4GHz
GPU	Mali-400 MP
Wireless	Wi-Fi : IEEE 802.11 B/G/N, Bluetooth 4.0
Storage Device	Built-in 16GB Nand Flash
Memory	DDR3 2GB
OS	Android 4.4 KitKat
I/O Port	Mic Input x 1, SIM x 1, TF Card Slot x 1, DC Input Jack x 1, Mini HDMI x 1, Earphone Jack x 1, Speaker(Stereo), USB Host
Data port	OTG / Micro USB
Display	10.1 inch IPS panel 1280x800 Pixel, 5 Points Capacitive Touch Screen
G-sensor/GPS/Camera	Front 0.3M, Rear 2M
Micro-SD Card	Support up to 64 GB (optional)
Dimension	262 x 175 x 10.5(mm)
Weight	570 (g)
Color	White & Black
Battery	DC 3.7V / 7,000mA
Power Supply	DC : 5V, 2A Adaptor (DC JACK) / USB : 5V, 0.5A
Certification	KC, FCC, CE, CB, ROHS

Cradle	Specifications
Built in Printer	3" thermal printer with auto cutting Printing Speed : 200mm/sec
Print width	3-inch (80mm, 576 dots)
I/O Port	Serial(DB-9), LAN, Cash Box , DC in Jack
Stacte LED	Power LED, ERR / Data LED, Charging LED
Dimension	271 x 204.75 x 223(mm)
Weight	1,120 (g)
Power Supply	24V 2.7A DC Adapter
Option	MSR (SUPPORT 1,2,3 TRACK USB)
	SCR (USB)
	NFC (USB)



This manual is provided for informational purposes only, under copyright laws, reproduction, distribution is prohibited.
The contents of this manual are subject to change without prior notice.

This equipment has been tested and found to comply with the limits for a Class B digital device, pursuant to part 15 of FCC Rules. These limits are designed to provide reasonable protection against harmful interference in a residential installation. This equipment generates and can radiate radio frequency energy and, if not installed and used in accordance with the instructions, may cause harmful interference to radio communications. However, there is no guarantee that interference will not occur in a particular installation. If this equipment does cause harmful interference to radio or television reception, which can be determined by turning the equipment off and on, the user is encouraged to try to correct the interference by one or more of the following measures:

- Reorient or relocate the receiving antenna.
- Increase the separation between the equipment and receiver.
- Connect the equipment into an outlet on a circuit different from that to which the receiver is connected.
- Consult the dealer or an experienced radio/TV technician for help.

This device complies with Part 15 of FCC Rules. Operation is subject to the following two conditions: (1) This device may not cause harmful interference, and (2) This device must accept any interference received, including interference that may cause undesired operation.

Note: The manufacturer is not responsible for any radio or TV interference caused by unauthorized modifications to this equipment. Such modifications could void the user's authority to operate this equipment. Any changes or modifications not expressly approved by the party responsible for compliance could void the user's authority to operate the equipment.

This equipment complies with FCC radiation exposure limits set forth for an uncontrolled environment. User should avoid un-intended operation of usage when it is collocated with other transmitters or antenna. The use of belt clips, holsters and similar accessories should not contain metallic components in its assembly. The use of accessories that do not satisfy these requirements may not comply with FCC RF exposure requirements, and should be avoided.

